

FIRE SAFETY INSPECTION REPORT

DADA DHAKA LTD.

**HOLDING # 40, JOYMOT KHAN ROAD, PAGAR,
MUNNU NAGAR, TONGI, GAZIPUR**

OTHER FACTORIES: NONE



ACCORD
on Fire and Building Safety in Bangladesh

August 6, 2014

SUMMARY

Dada Dhaka Ltd. was surveyed for fire safety on 06-08-2014 by Hughes Associates, Inc. This summary identifies the major deficiencies that were identified during the inspection.

The purpose of this survey was to identify significant fire safety issues and to provide recommendations for remediation based on applicable standards specified by the Accord. The scope of this initial fire safety inspection was limited to the review and identification of major fire safety issues. The inspection did not include identification of minor deficiencies, which will be further addressed as part of follow-up inspections.

Table 1 summarizes the major fire safety issues identified during the inspection. Recommendations have been provided to address each issue.

An implementation schedule shall be developed by the factory to remediate each of the findings. The specific timing of improvements, including any requested extensions due to design / installation constraints, shall be submitted to the Accord for approval.

Table 1. Findings And Recommendations

| No. | Category | Finding | Recommendation | Remediation Timeframe |
|-----|----------|---------|----------------|--------------------------|
|-----|----------|---------|----------------|--------------------------|

| | | | | |
|-----|-------------------------|--|---|------------------------|
| F-1 | Fire Rated Construction | <p>The generator and fire pump rooms are not separated by fire-rated construction (openings, non-rated doors, penetrations). The generator room is located in separate building, but open to printing section. The fire pump room is located in east exit stairs.</p> | <p>Separate the generator and fire pump rooms by a minimum 2-hr fire-rated construction. Seal and/or protected all openings to maintain the required fire separations</p> | <p>Within 3 months</p> |
|-----|-------------------------|--|---|------------------------|



| | | | | |
|-----|-------------------------|--|---|------------------------|
| F-2 | Fire Rated Construction | <p>Rooms used for combustible storage on the basement, ground and 1st floors are not separated by fire-rated construction.</p> | <p>Provide dedicated storage rooms separated by minimum 1-hr fire-rated construction.</p> | <p>Within 3 months</p> |
|-----|-------------------------|--|---|------------------------|



| | | | | |
|-----|-------------------------|---|--|-----------------|
| F-3 | Fire Rated Construction | The exit stairs are not separated from work areas or other spaces on each floor by fire-rated construction. | Provide minimum 1.5-hr fire rated doors and seal all unprotected openings to separate the exit stairs from work areas and other building spaces on all floor levels. Ensure that the fire doors are self-closing and positive latching and that they are provided with fire exit (panic) hardware where serving production floors. | Within 3 months |
|-----|-------------------------|---|--|-----------------|

If fire doors are required to be held open for functional reasons, provide automatic-closing devices tied to the fire alarm system.





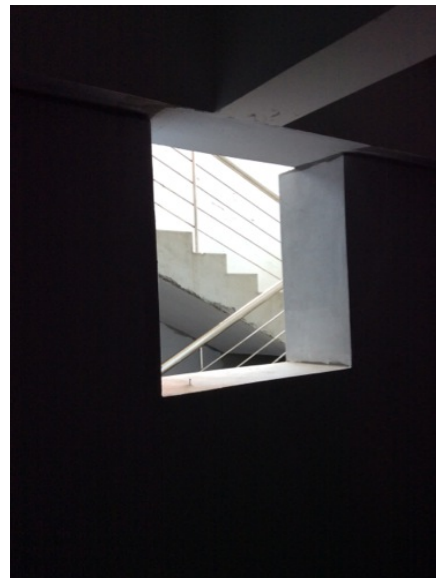
| | | | | |
|-----|-------------------------|--|---|-----------------|
| F-4 | Fire Rated Construction | Unsealed penetrations and openings in elevator and electric shafts are located in the fire-rated floor/ceiling assemblies. | Provide a minimum 2-hr fire-rated shaft to separate the utility risers from each floor level. | Within 3 months |
|-----|-------------------------|--|---|-----------------|

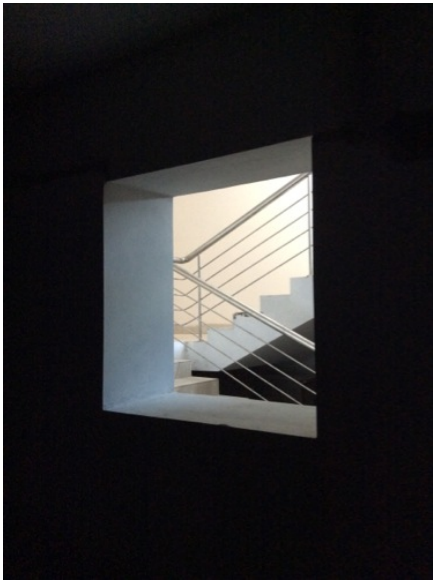


| | | | | |
|-----|-------------------------|--|---|-----------------|
| F-5 | Fire Rated Construction | Unsealed penetrations and openings on all floors are located in the fire-rated floor/ceiling assemblies. | Provide a minimum 2-hr fire-rated shaft to separate the utility risers from each floor level. | Within 3 months |
|-----|-------------------------|--|---|-----------------|



| | | | | |
|-----|-------------------------|---|---|-----------------|
| F-6 | Fire Rated Construction | Unsealed penetrations and openings are located in the northwest, northeast and east exit stair enclosures. The east exit stairs were open to work area. | Seal all penetrations and openings in exit stair enclosure walls to maintain the fire separation. | Within 3 months |
|-----|-------------------------|---|---|-----------------|





| | | | | |
|-----|--------|---|--|-----------|
| F-7 | Egress | Egress doors / gates with locking features are provided at building exits, exit stairs, along egress routes and exit discharge. | Remove locking features from all egress doors / gates. If locks are required for security reasons, utilize special door locking features complying with NFPA 101. | Immediate |
|-----|--------|---|--|-----------|



| | | | | |
|-----|--------|---|---|-----------|
| F-8 | Egress | Storage was located in all exit stairs. | Remove all storage from exit stairs and egress paths. | Immediate |
|-----|--------|---|---|-----------|



| | | | | |
|-----|--------|--|--|----------------|
| F-9 | Egress | Collapsible gates / sliding doors are provided at exits in the basement. | Replace all gates / sliding doors along the means of egress with side-hinged, swinging egress doors. | Within 1 month |
| | | | If locks are required for security reasons, utilize special door locking features complying with NFPA 101. | |



| | | | | |
|------|--------|---|--|-----------------|
| F-10 | Egress | Egress door serving 50 or more occupants does not swing in the direction of egress travel on the 1st floor. | Modify the egress door to swing in the direction of egress travel. | Within 3 months |
|------|--------|---|--|-----------------|



| | | | | |
|------|--------|---|---|-----------------|
| F-11 | Egress | Handrails and intermediate handrails were not present on at least one side and middle side of the southeast exit stairs on ground floor. Note : The stair width is 2.68 m. | Provide handrails and intermediate handrails on at least one side and middle of exit stair. | Within 3 months |
|------|--------|---|---|-----------------|



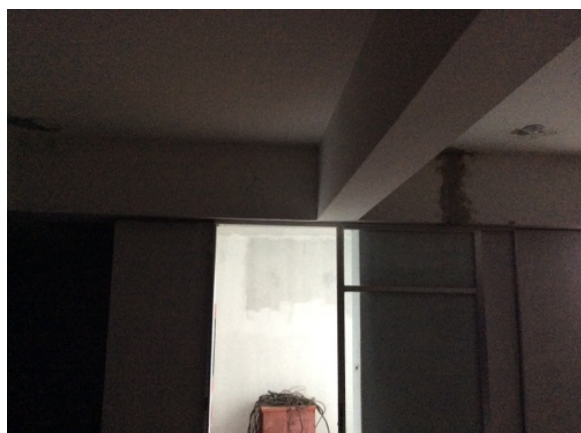
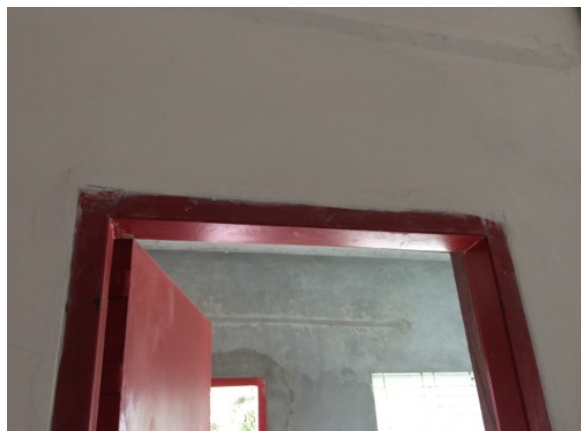
| | | | | |
|------|--------|--|---|-----------------|
| F-12 | Egress | A landing and stairs were not provided in northwest exit door on the ground floor. | Provide landing on both sides of exit door, and stairs. | Within 3 months |
|------|--------|--|---|-----------------|



| | | | | |
|------|-----------------|---|---|-----------------|
| F-13 | Fire Protection | Inspection, testing, and maintenance of the fire alarm system is not in accordance with NFPA 72. | Inspect, test and maintain the fire alarm system, and keep written records on-site, in accordance with NFPA 72. | Within 3 months |
| F-14 | Fire Protection | The automatic fire alarm and detection systems were not installed in basement. | Provide the automatic fire alarm and detection systems. | Within 3 months |
| F-15 | Fire Protection | Based off observations, the existing automatic sprinkler system was not adequately installed, placed and provided. The sprinkler system did not install the tamper switch, water flow switch, drain pipe line and test pipe line. | Repair or provide the sprinkler system in accordance with NFPA 13. | Within 3 months |



| | | | | |
|------|-----------------|--|--|----------------|
| F-16 | Egress Lighting | Exit sign on the basement, ground and 1st floors not provided at exit. | Provide exit signs above all exits to the exterior and all doors to the exit stairs. | Within 1 month |
|------|-----------------|--|--|----------------|



| | | | | |
|------|-----------------|--|--|-----------------|
| F-17 | Egress Lighting | Inspection, testing, and maintenance for the emergency lighting system was not in accordance with The ACCORD standard. | Inspect, test and maintain the emergency lighting system in accordance with The ACCORD standard. Keep written records on-site. | Within 3 months |
|------|-----------------|--|--|-----------------|