

# FIRE SAFETY INSPECTION REPORT

**Knit Syndicate**

**ACCORD ID: 10590**

**Jalkuri, Siddirganj, Narayanganj-1400, Bangladesh (23.656488, 90.488272)**

**Other Factories: Hannan Fashion (5th & 6th Floor)**



**Inspected By:** Md. Mah Mudur Rahman & Nasif Javed Tofa

**Date:** 5th January, 2017

## Fire Safety Inspection Report

Factory Name: Knit Syndicate

### Introduction:

Knit Syndicate was surveyed for fire safety on 05 January, 2017 by the Accord Inspection Team. The purpose of the survey was to identify significant fire safety issues and to provide recommendations for remediation based on applicable standards specified by the Accord. The scope of this initial fire safety inspection was limited to the review and identification of major fire safety issues. The inspection did not include identification of minor deficiencies, which will be further addressed as part of follow-up inspections.

### Limitations

The information in this fire safety inspection report was obtained during a visit to the facility and during interviews with local factory management. It has not been possible to provide independent verification for all the information and data collected, and, therefore, The Accord cannot accept general responsibility for omissions or errors arising from inaccuracies in this report from the information obtained.

The findings and recommendations in this report are not intended to imply, guarantee, ensure or warrant compliance with any government regulations. Additionally, the results do not imply in any way that compliance with the findings or recommendations as stated in this report will eliminate all hazards, risks or exposures or that hazards, risks or exposures not referred to in this report do not exist. Compliance with the findings and recommendations stated in this report does not relieve the factory owner from obligation to comply with specific project requirements, industry standards, or the provisions of any local government regulations.



### General Factory Information

**Factory Building name(s):** 1. 8 storey RCC building (Main Production Building)

**Factory Address:** Jalkuri, Siddirganj, Narayanganj-1400, Bangladesh

### Points of contact:

<p>Md. Arafur Rahman          Manager (HR &amp; Compliance)          Knit Syndicate          Contact No: 01718184774          Email: www.knitsyndicate.net</p>	<p>Md. Abdul Hannan          Director          Knit Syndicate          Contact No: 01711-561147          Email: hannan@knitsyndicate.net</p>
	



## Findings & Recommendations :

Table 1 summarizes the major fire safety issues identified during the inspection. Recommendations have been provided to address each issue.

An implementation schedule shall be developed by the factory to remediate each of the findings. The specific timing of improvements, including any requested extensions due to design / installation constraints, shall be submitted to the Accord for approval.

SI No.	Category	Findings	Required Action	Remediation Time Frame
F-1	Fire Rated Construction	The exit stairs are not separated from [work areas, other spaces] on each floor by fire rated construction.	<p>Provide minimum 1.5-hr fire rated doors and seal all unprotected openings to separate the exit stairs from work areas and other building spaces on all floor levels. Ensure that the fire rated doors are self-closing and positive latching and that they are provided with fire exit (panic) hardware where serving production floors.</p> <p>If fire rated doors are required to be held open for functional reasons, provide automatic closing devices tied to the fire alarm system.</p> <p>Once fire doors are installed, every door in a stair enclosure serving more than 5 stories shall be provided with re-entry unless it meets ACCORD standard 6.8.3.1</p>	Within 3 months





F-2	Fire Rated Construction	Rooms used for storage of combustible materials are not separated from the surrounding occupancy/areas (Location: Ground Floor,7th floor with dining)	Rooms used for storage of combustible materials shall be separated from the surrounding occupancy with a minimum 1 hour construction.	Within 3 months
-----	-------------------------	---	---	-----------------





F-3	Fire Rated Construction	Generator room is not separated by fire rated construction (openings, non-rated doors, penetrations). Location: West side of the building.	Generator room shall be separated from other occupancies by a minimum 2-hr fire rated construction (wall, floor, slab etc.). Seal all penetrations and openings (door, window etc.) should be protected by 1.5-hr fire rated materials to maintain the fire separation if required. All exhaust systems shall discharge to the exterior of the building in a safe location.	Within 3 months
-----	-------------------------	--	---	-----------------





F-4	Fire Rated Construction	The elevator at each floor discharges inside the production floor. [Unsealed penetrations & openings]	Provide a minimum 2-hr fire rated construction to separate the elevator shaft from each floor level. Seal all penetrations and openings in floors/ceiling assemblies to maintain the fire separation.	Within 3 months
-----	-------------------------	---	---	-----------------





F-5	Fire Rated Construction	<p>The[boiler/transformer/air compressor] room is not separated by fire rated construction (openings, non-rated doors, penetrations). Location: Transformer and compressor on ground floor, boiler on 3rd floor.</p>	<p>Separate the boiler room by a minimum 2-hr fire rated construction (for high rise building)/ 1-hr fire rated construction (for low rise building). Seal and/or protected all openings to maintain fire separations.</p> <p>And</p> <p>Separate the [transformer/EMR/gas meter/air compressor] room by a minimum 2-hr fire rated construction. Seal and/or protected all openings to maintain fire separations.</p>	Within 3 months
-----	-------------------------	--	---	-----------------





F-6	Fire Rated Construction	Both the exit stairs discharge the occupants inside the building.	<ol style="list-style-type: none"> <li>1. Modify stair to discharge directly outside.</li> <li>Or</li> <li>2. Provide 2-hr fire-rated exit passageway leading directly outside (vestibules to separate any storage areas).</li> <li>Or</li> <li>3. Provide sprinkler protection for discharge floor in accordance with NFPA 13.</li> </ol>	03 Months
-----	-------------------------	---	--	-----------





F-7	Egress	Storage was located under the exit stairwell. Location: Electrical panel on ground floor at south west exit stair.	Remove all storage from exit stairs and egress paths.	Immediate
-----	--------	---	---	-----------





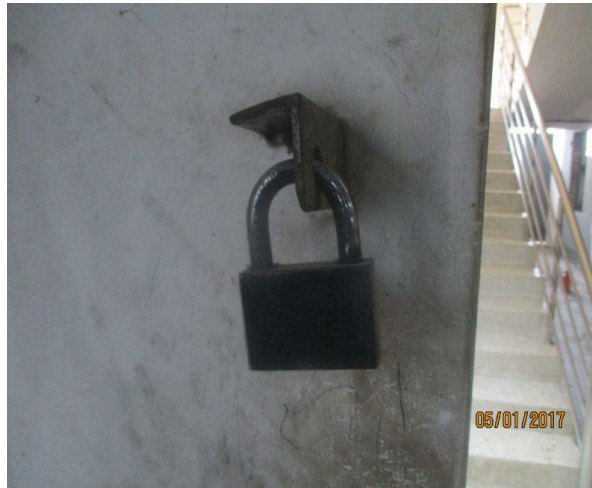
F-8	Egress	Collapsible gates/combustible doors are provided at [building exits, exit stairs, along egress routes, exit discharge]	<p>Replace all collapsible gates/ sliding doors/ rolling shutter doors along the means of egress with side-hinged, swinging egress doors.</p> <p>If locks are required for security reasons, utilize specialized door locking features complying with NFPA 101.</p>	Within 1 month
-----	--------	--	---	----------------





F-9	Egress	Egress doors/gates with locking features not complying with NFPA 101 are provided at [building exits, exit stairs, along egress routes, exit discharge]	Remove locking features from all egress doors/gates. If locks are required for security reasons, utilize specialized door locking features complying with NFPA 101.	Immediate
-----	--------	---	---	-----------





F-10	Egress	Stair designation, occupant load signage are not posted properly.	Install signage adjacent to each stair door indicating the stair name and the floor level at the noted locations in both English and Bengali language. Post the occupant load for every assembly and production floor in a facility in a conspicuous space near the main exit or exit access doorway for the space.	Within 1 month
------	--------	---	---	----------------



F-11	Fire Alarm & Detection System	The fire detection system is antiquated, not a listed system, and does not provide alarm and notification features consistent with acceptable standards.	Replace the fire detection system with a new, listed addressable fire detection system in accordance with NFPA 72.	Design within 4 months, Install within 9 months
------	-------------------------------	--	--	---



F-12	Fire Alarm & Detection System	Inspection, testing, and maintenance for the fire detection system is not in accordance with NFPA 72.	Inspect, test and maintain the fire detection system, and keep written records on-site, in accordance with NFPA 72.	Within 3 months
F-13	Water Based Fire Protection system	The high-rise building has an occupied floor greater than 23 meter (75 feet) and is not provided with automatic sprinkler protection. The large occupant loads, heavy fuel loading, and anticipated extended egress times warrant sprinkler protection.	Provide automatic sprinkler protection throughout the building in accordance with NFPA 13.	Design within 6 months, install within 12 months





F-14	Water Based Fire Protection System	Inspection, testing, and maintenance of the automatic sprinkler system is not in accordance with NFPA 25.	Inspect, test and maintain the automatic sprinkler system, and keep written records on-site, in accordance with NFPA 25.	Within 3 months
------	------------------------------------	---	--	-----------------



F-15	Fire Rated Construction	Areas used for combustible storage are not separated by fire-rated construction	<p>Provide dedicated storage rooms separated by minimum 1-hr fire-rated construction.</p> <p>Where separate storage rooms are not feasible, provide defined storage areas and limit the storage arrangement as follows:</p> <ul style="list-style-type: none"> <li>- Maximum height of 2.4m and maximum area of 23m<sup>2</sup></li> <li>- If sprinkler protected: maximum height of 3.66m and maximum area of 93m<sup>2</sup></li> </ul> <p>Separate areas of unenclosed combustible storage by a minimum clear distance of 3m</p>	Within 3 months
------	-------------------------	---	---	-----------------



F-16	Egress	Storage was located in the egress path. Location: Ground floor, 5th floor.	Keep egress path and stair clear of storage.	Immediate
------	--------	---	--	-----------



F-17	Egress Lighting	Manual on-off switch is provided for [emergency lighting / exit signage] units	Remove manual on/off switches from [emergency lighting /exit signage] units to prevent them from being switched off	Within 1 month
------	-----------------	--	---	----------------





F-18	Egress Lighting	Exit signage not illuminated (burned out, broken, etc.).	Regularly inspect all exit signage and replace/install lights as needed to illuminate signs	Within 1 month
------	-----------------	--	---	----------------





F-19	Egress Lighting	Based on the number and location of emergency lights observed, adequate illumination levels are not anticipated along egress routes.	Test the emergency lighting system on each floor and provide additional emergency fixtures to provide adequate illumination along the means of egress. Provide a minimum illumination of 10 lux at the floor level within exit stairs and exit discharge paths and minimum 2.5 lux along exit access aisles.	Within 3 months
------	-----------------	--	--	-----------------





F-20	Egress Lighting	Inspection, testing, and maintenance for the emergency lighting system was not in accordance with The ACCORD standard.	Inspect, test and maintain the emergency lighting system in the accordance with The ACCORD standard. Keep written records on-site.	Within 3 months
------	-----------------	--	--	-----------------



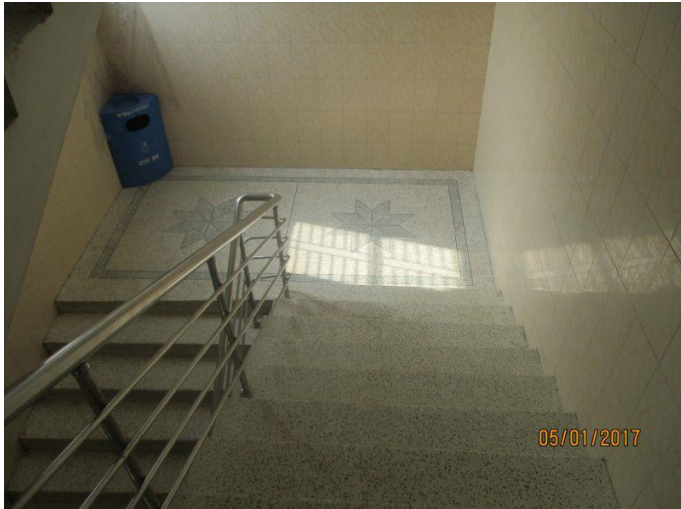
F-21	Egress	Parapets or guards are provided in occupied roof which is less than 1067mm (42 inch.).	Provide parapets or guards with a minimum height of 1067mm (42 inch.).	Within 3 months
------	--------	--	--	-----------------



F-22	Fire Extinguishers ITM	Inspection, testing and maintenance of portable fire extinguishers is not in accordance with NFPA 10.	Inspect, test and maintain the portable fire extinguishers and keep written records onsite, in accordance with NFPA 10 and ACCORD standards.	Within 3 months
------	---------------------------	---	--	-----------------



F-23	Egress	Handrails are not provided on both sides of each exit stairs on all floors. Having handrails on one side of said staircase, may pose as a falling hazard during evacuation. Location: South West stair	Provide handrails on both sides of the exit stair. New handrails shall have a minimum height of 865 mm (34 in.) and a maximum height of 965 mm (38 in.) as measured from the leading edge of the tread. Intermediate handrails shall be provided when the stair width exceeds 2.2 m (87 in.)	Within 3 months
------	--------	--	--	-----------------



F-24	Egress	The width of egress aisles is less than 36-inch	Provide minimum aisle widths of 36-inch.	Within 3 months
F-25	Egress	Exit stair door/egress door serving 50 or more occupants does not swing in the direction of egress travel. Location: Dining floor, Office area	Modify the egress door to swing in the direction of egress travel.	Within 1 month





F-26	Egress Lighting	Exit sign not provided at exit. Location: 7th Floor and 2nd floor office area.	Provide exit signs above all exits to the exterior and all doors to the exit stair.	Within 1 month
------	-----------------	--	---	----------------

