

# Echotex (Extension) Ltd

Chandra, Palli Biddut, Kaliakoir, Gazipur

(24.038755N,90.258744E)

6<sup>th</sup> December ,2016

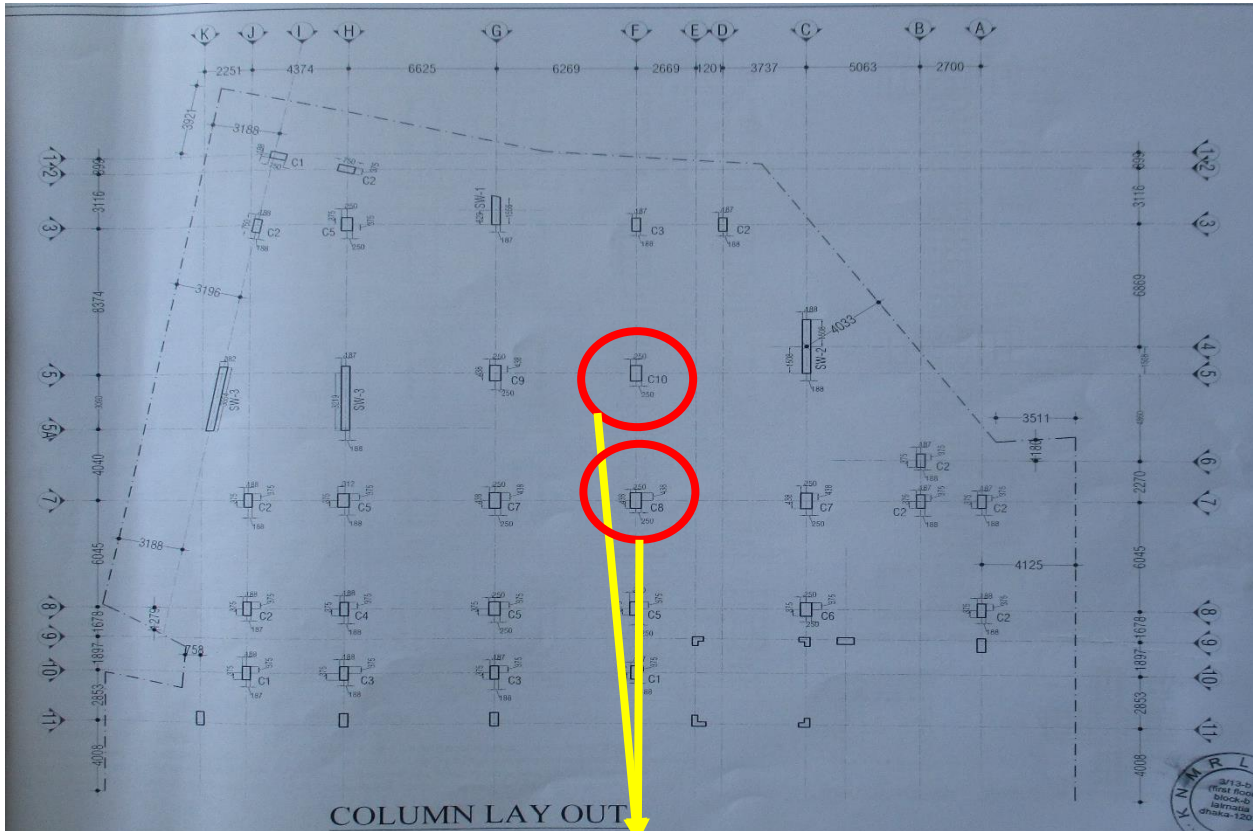




# Observations



# Column to be stressed above normal design limits



High Stressed Columns

Cursory calculation indicates that the working stresses of the ground floor columns are at a level that required to review.





**Heavy Loading was observed on floors**



Heavy loading was observed on 9<sup>th</sup> floor which was measured as 102 psf on typical floor panel. Besides, Heavy loading was also found on several floors which exceeds 42 psf. A load plan was found where mentioned the floor capacity was 80 psf which required to review.

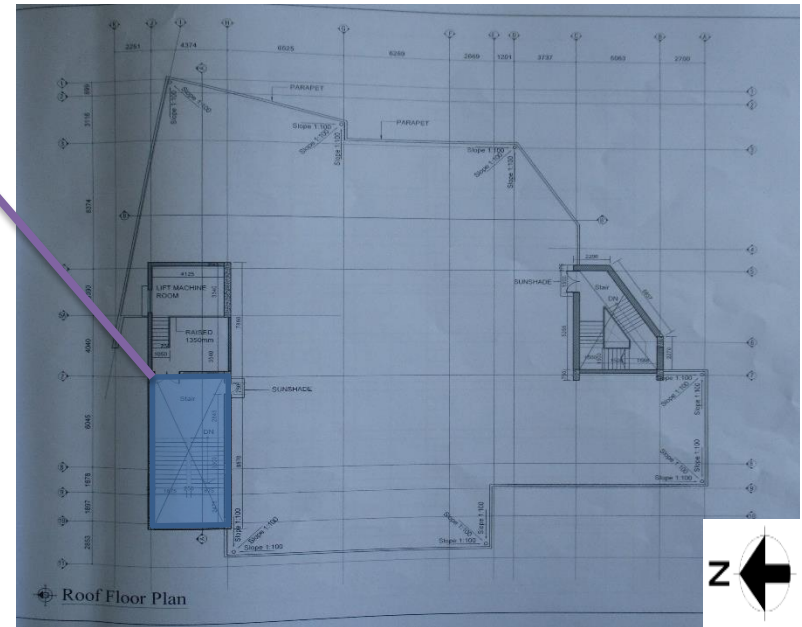
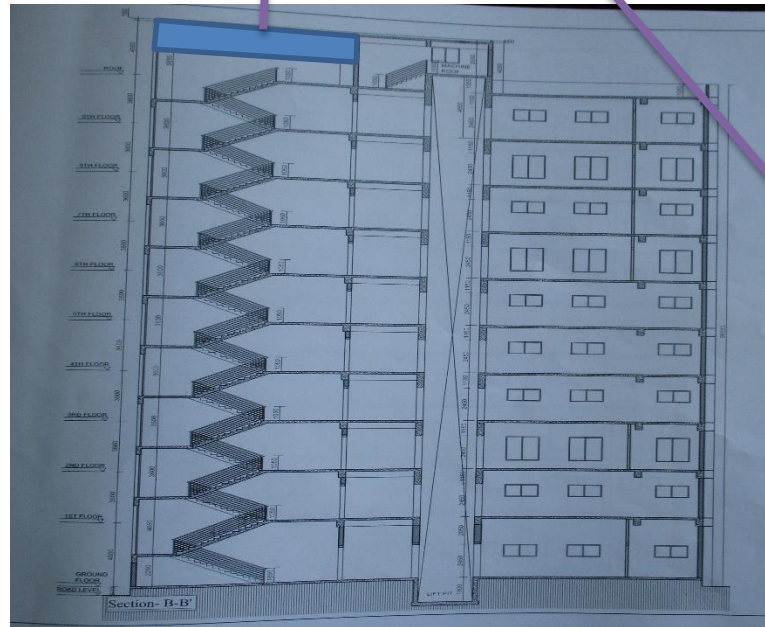
**Heavy Loading was observed on floors**



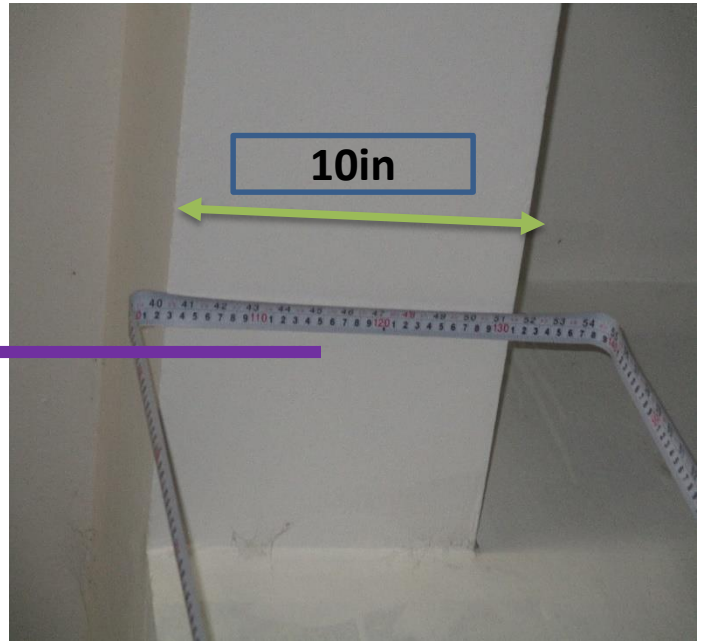
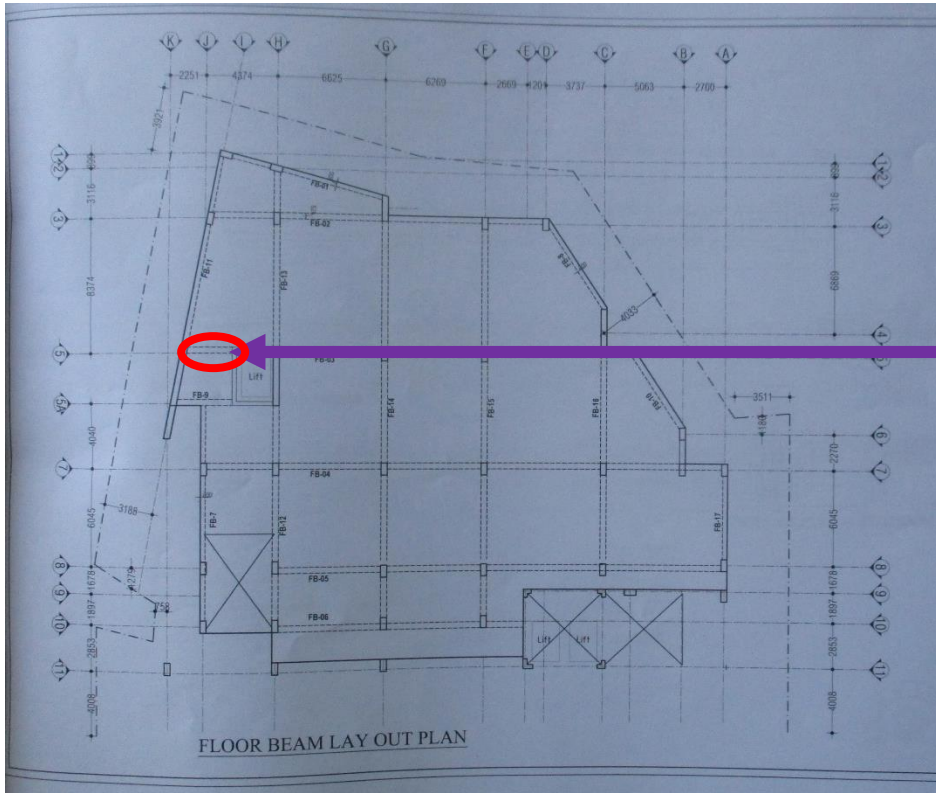
# Inconsistency between As Built Drawings and on-site condition



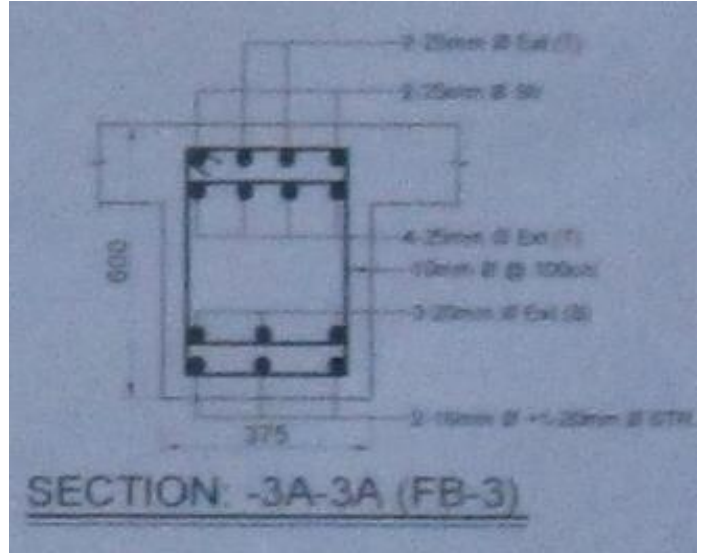
During inspection, RCC water Tank was observed on Roof which was not mentioned on As-Built Drawing



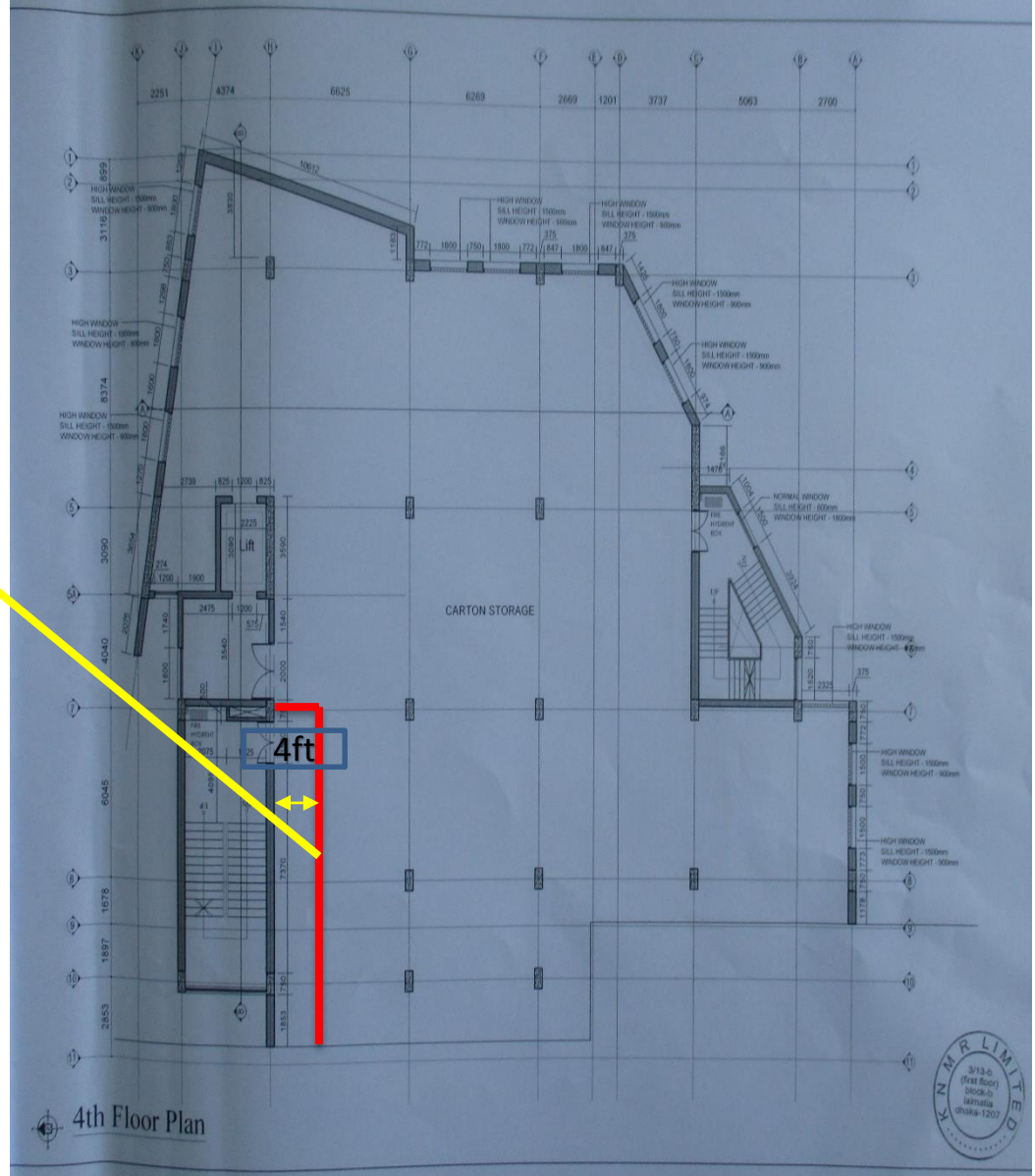
**Inconsistency between As Built Drawings and on-site condition**



Floor Beam width of the highlighted portion was observed 10 inch instead of 15 inch on each floor

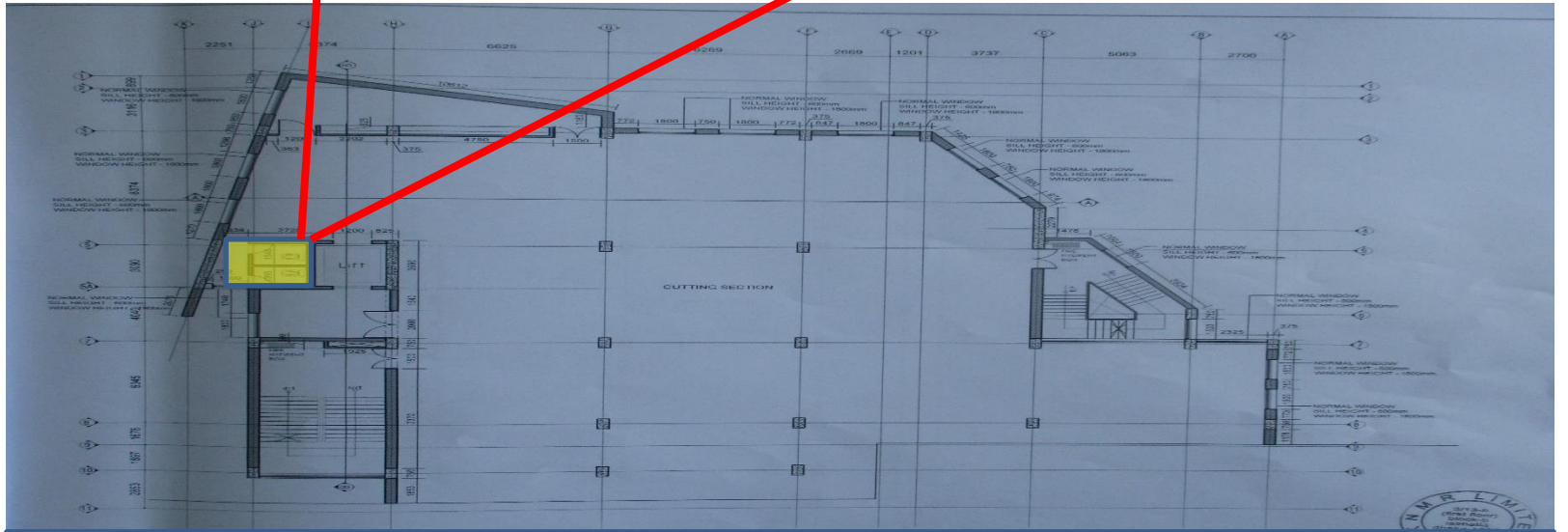


**Inconsistency between As Built Drawings and on-site condition**



Additional brick wall (5 inch thickness) observed beside stair on 2<sup>nd</sup>, 4<sup>th</sup> & 5<sup>th</sup> Floor(not mentioned in As Built Drawings)

## Inconsistency between As Built Drawings and on-site condition



On As Built drawings Toilet Area was showed on highlighted portion of 8th, 6<sup>th</sup> and 2<sup>nd</sup> Floor but actually there was no toilet area.

**Inconsistency between As Built Drawings and on-site condition**



# Exposed Rebar on Roof



Exposed Rebar was observed on roof that is susceptible to corrosion



# Problems Observed

**Item 1: Column to be stressed above normal design limits**

**Item 2: Heavy Loading was observed on floors**

**Item 3: Inconsistency between As Built Drawings and on-site condition**

**Item 4: Exposed Rebar on Roof**



Item No.	Observation	Recommended Action Plan	Recommended Timeline
1	Column to be stressed above normal design limits	Factory Engineer to review design, loads and columns stresses in area identified above.	6-weeks
2	Column to be stressed above normal design limits	Verify in-situ concrete strength (using min. 4 nos. 100mm dia. Cores and/or assessment of available concrete strength data) and as constructed reinforcement for all columns.	6-weeks
3	Column to be stressed above normal design limits	Implement any remediation work if required	6-months
4	Heavy Loading was observed on floors	Loading must be kept within 2Kpa on all floor area.	6-weeks
5	Heavy Loading was observed on floors	Produce and actively manage a loading plan for all floor plates within the factory giving consideration to floor capacity and column capacity.	6-weeks
6	Heavy Loading was observed on floors	Continue to implement load plan.	6-months
7	Inconsistency between As Built Drawings and on-site condition	Update As- Built drawing in accordance with actual condition and Incorporate the changes in As- Built Drawings.	6-weeks
8	Exposed Rebar on roof	All exposed reinforcement is to be protected from corrosion which may cause degradation of the concrete.	6-weeks