

FIRE SAFETY INSPECTION REPORT

**TEXEUROP (BD) LTD.
VOGRA, JOYDEVPUR**

OTHER FACTORIES: NONE



ACCORD
on Fire and Building Safety in Bangladesh

July 13, 2014

SUMMARY

Texeurop (BD) Ltd. was surveyed for fire safety on 7/13/2014 by Hughes Associates, Inc. This summary identifies the major deficiencies that were identified during the inspection.

The purpose of this survey was to identify significant fire safety issues and to provide recommendations for remediation based on applicable standards specified by the Accord. The scope of this initial fire safety inspection was limited to the review and identification of major fire safety issues. The inspection did not include identification of minor deficiencies, which will be further addressed as part of follow-up inspections.

Table 1 summarizes the major fire safety issues identified during the inspection. Recommendations have been provided to address each issue.

An implementation schedule shall be developed by the factory to remediate each of the findings. The specific timing of improvements, including any requested extensions due to design / installation constraints, shall be submitted to the Accord for approval.

Table 1. Findings And Recommendations

No.	Category	Finding	Recommendation	Remediation Timeframe
F-1	Fire Rated Construction	Hazardous materials room is not separated by fire-rated construction.	Separate the hazardous materials room by a minimum 2-hr fire-rated construction. Seal and/or protected all openings to maintain the required fire separations.	Within 3 months



F-2	Fire Rated Construction	The exit stairs are not separated from work areas on each floor by fire-rated construction.	Provide minimum 1.5-hr fire rated doors and seal all unprotected openings to separate the exit stairs from work areas and other building spaces on all floor levels. Ensure that the fire doors are self-closing and positive latching and that they are provided with fire exit (panic) hardware where serving production floors.	Within 3 months
			If fire doors are required to be held open for functional reasons, provide automatic-closing devices tied to the fire alarm system.	



F-3	Fire Rated Construction	The exit discharge path serving the Dyeing Shed is less than 10 ft wide and is not separated from the building interior.	Seal all penetrations and openings to the interior of the building along the discharge path, up to a height of 10 ft., to provide a minimum 1-hr fire separation. Alternatively, provide a second remote discharge path to the public way (only include this if feasible).	Within 6 months
F-4	Egress	Egress doors with locking features are provided at building exits, exit stairs, and, exit discharges.	Remove locking features from all egress doors. If locks are required for security reasons, utilize special door locking features complying with NFPA 101.	Immediate



F-5	Egress	Storage was located on the ground floor in Stairs 2 and 4. An electrical panel without fire rated separations is located on the ground floor of Stair 1.	Remove all storage from exit stairs and egress paths. Relocate electrical panel or provide fire rate separations.	Immediate
-----	--------	---	--	-----------



F-6 Egress

Sliding doors are provided at building exits, exit stairs, and exit discharges.

Replace all sliding doors along the means of egress with side-hinged, swinging egress doors.

Within 1 month

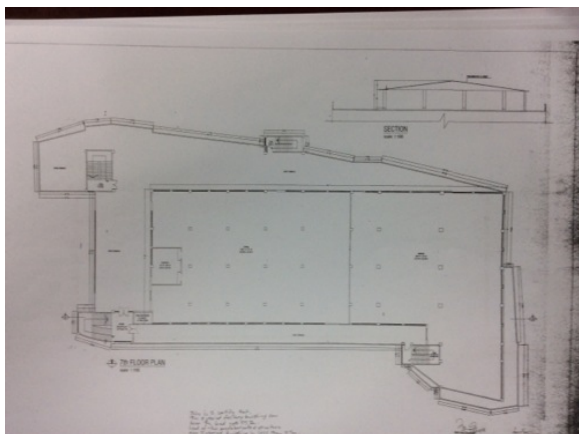
If locks are required for security reasons, utilize special door locking features complying with NFPA 101.



F-7	Egress	Exit stair door from the office to Stair 1 does not swing in the direction of egress travel.	Modify the egress door to swing in the direction of egress travel.	Within 3 months
-----	--------	--	--	-----------------



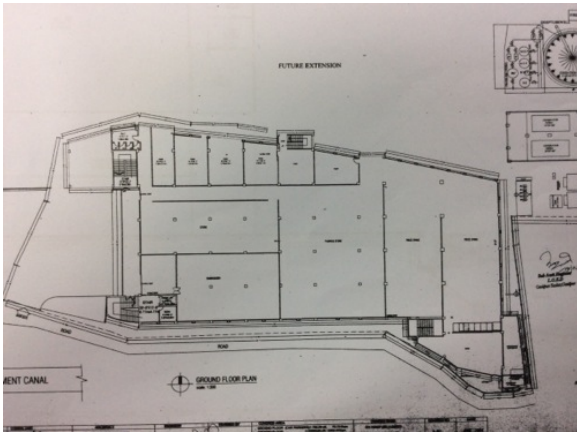
F-8	Egress	A single means of egress is provided from the women's dining area where the occupant load exceeds 49 persons.	Provide additional means of egress.	Within 3 months
-----	--------	---	-------------------------------------	-----------------



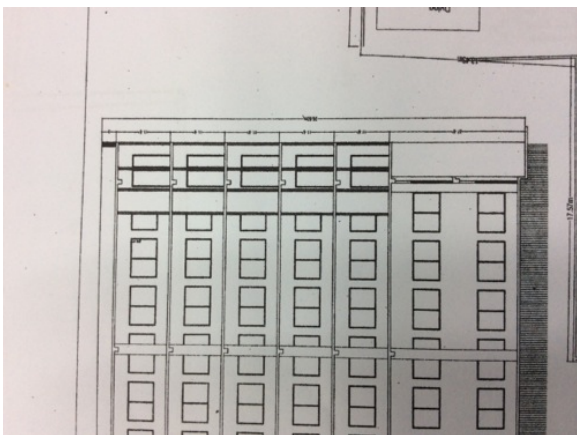
F-9	Egress	Stair 3 discharges inside the building.	Sufficient egress capacity is provided by Stairs 1, 2, and 4. Remove exit markings from Stair 3.	Within 6 months
-----	--------	---	---	-----------------



F-10	Egress	The exits are not remotely located from each other in the embroidery room such that a single fire event could compromise both exits.	Modify exit arrangement. OR Provide an additional exit. OR Provide sprinkler protection in accordance with NFPA 13.	Within 6 months
------	--------	--	---	-----------------



F-11	Fire Protection	The high-rise building has an occupied floor greater than 23m (75 ft) and is not provided with automatic sprinkler protection. The large occupant loads, heavy fuel loading, and anticipated extended egress times warrant sprinkler protection.	Provide automatic sprinkler protection throughout the building in accordance with NFPA 13.	Design within 6 months, install within 12 months
------	-----------------	--	--	--



F-12	Fire Protection	Inspection, testing, and maintenance of the fire alarm system is not in accordance with NFPA 72.	Inspect, test and maintain the fire alarm system, and keep written records on-site, in accordance with NFPA 72.	Within 3 months
------	-----------------	--	---	-----------------



F-13	Egress Lighting	Exit signage not illuminated in one location.	Regularly inspect all exit signage and replace/install lights as needed to illuminate signs.	Within 1 month
------	-----------------	---	--	----------------



F-14	Egress Lighting	Inspection, testing, and maintenance for the emergency lighting system was not in accordance with The ACCORD standard.	Inspect, test and maintain the emergency lighting system in accordance with The ACCORD standard. Keep written records on-site.	Within 3 months
------	-----------------	--	--	-----------------

