

Brothers Fashion Ltd

Redwan Tower, Holding-1, , Block-B, Ward-15, Vogra, Gazipur.

(23.983865N, 90.381609E)

16th October, 2016





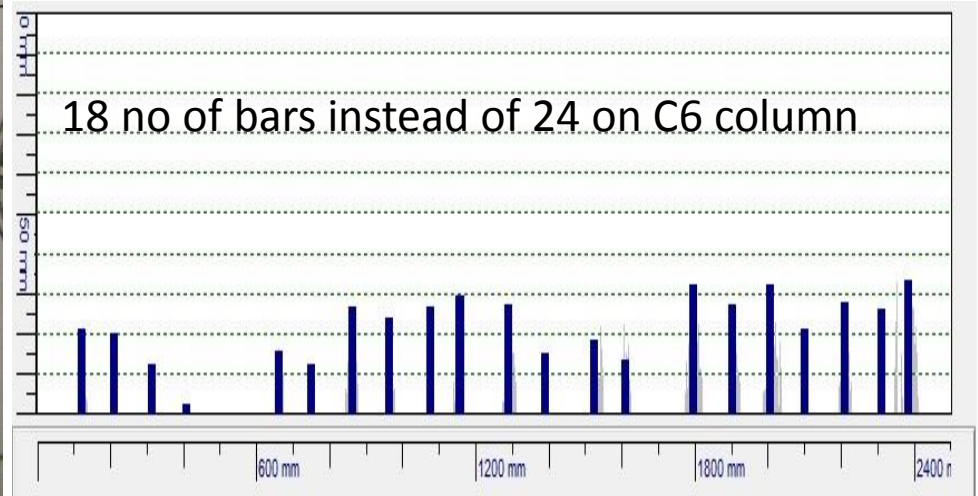
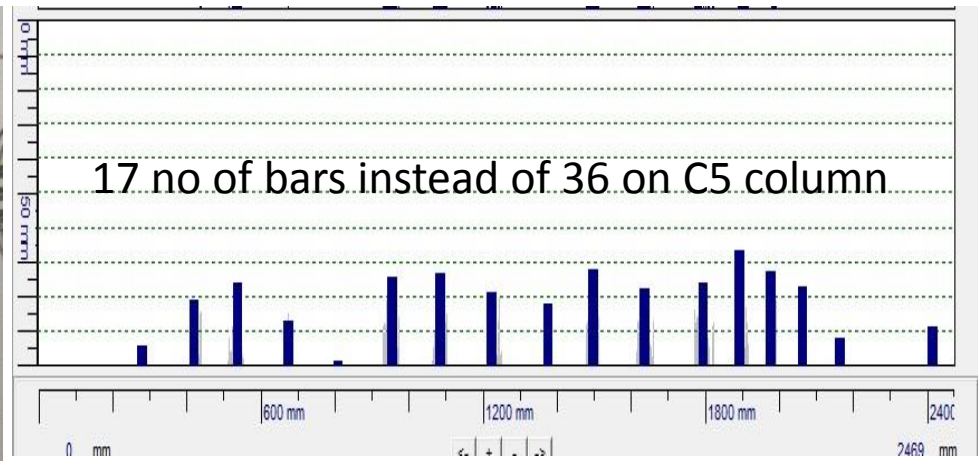
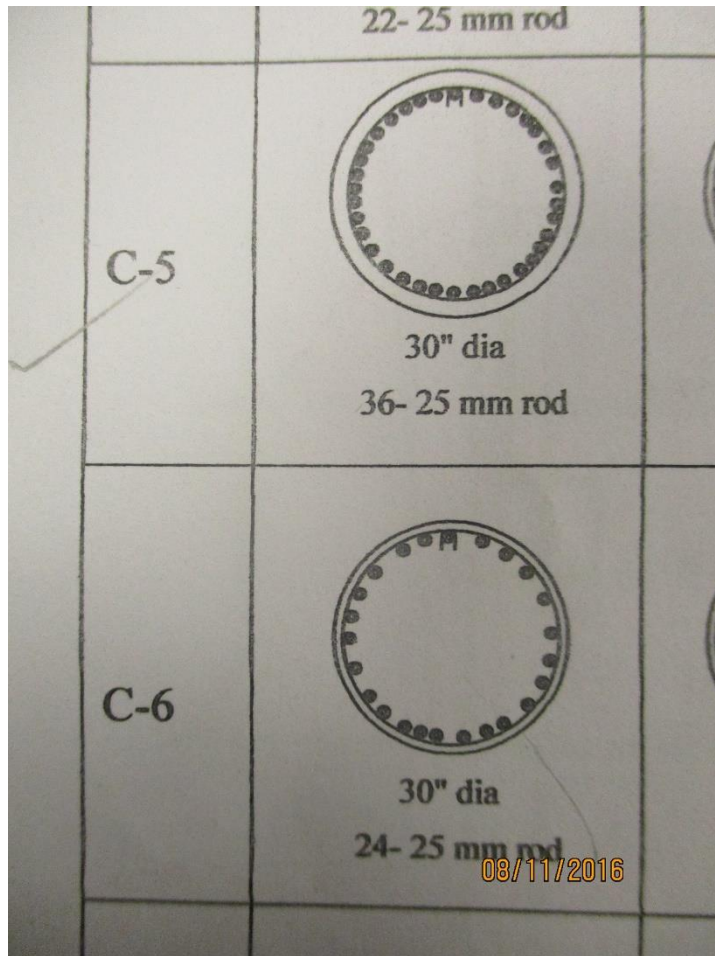
Observations



1. Discrepancies in Structural Documentation



Rebar mismatch on Ground Floor Column



The Ferro scanning image shows that no of rebar doesn't match with the as built structural drawing.

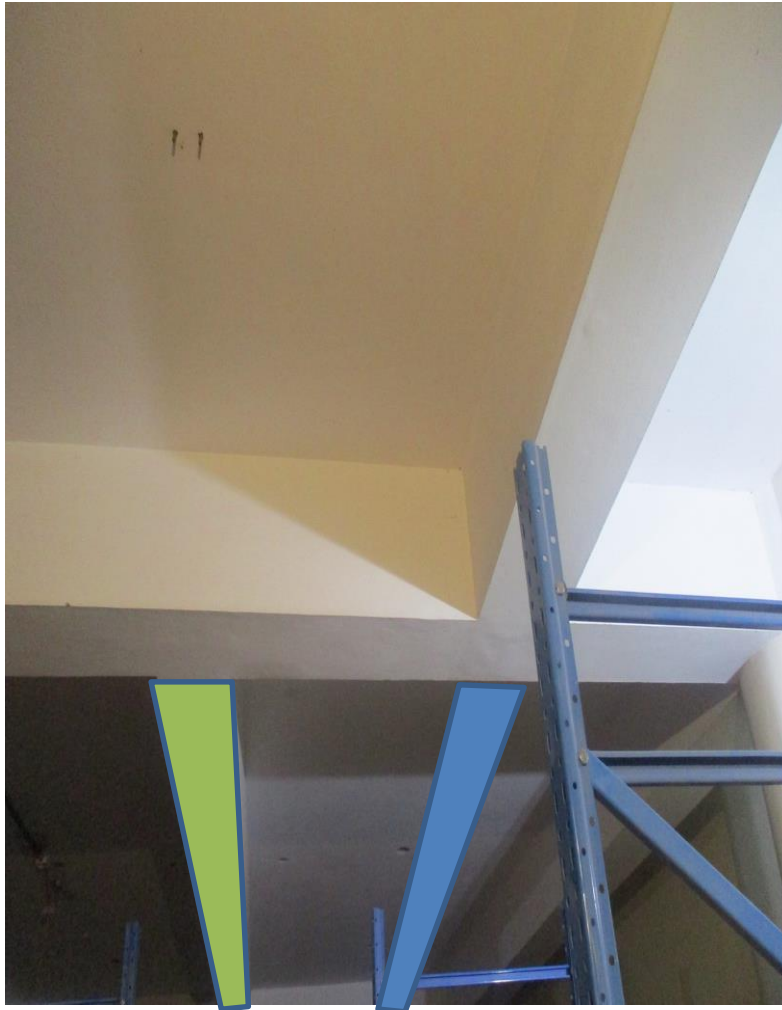
Discrepancies in Structural Documentation



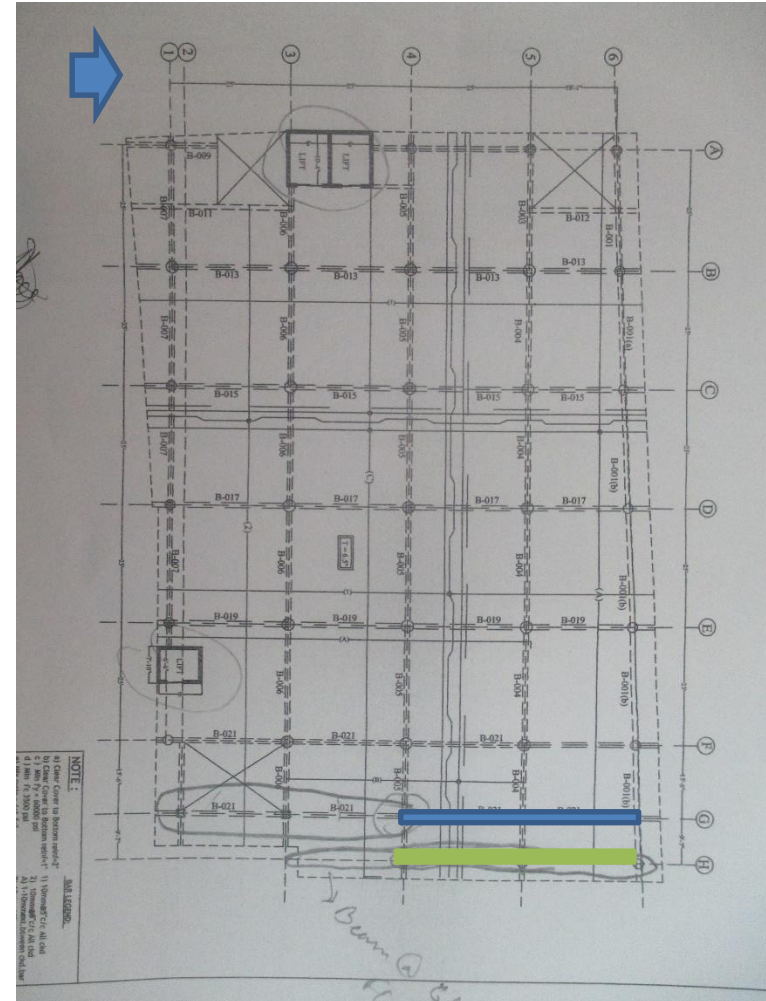
Irregularities in Beam Layout



As per As-built drawing



On Site



Irregularities in Beam Layout



2. High Loading On cantilever slab & Ground Floor

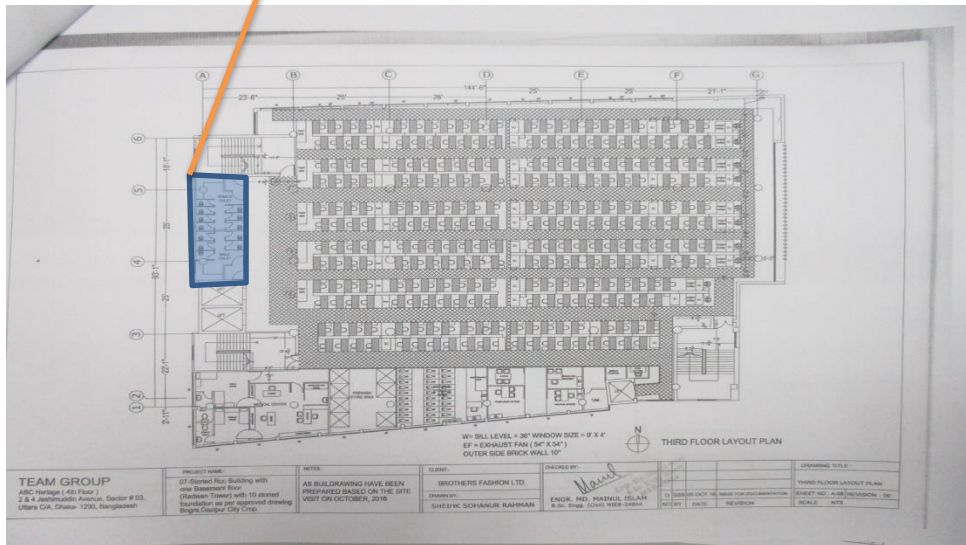


Loads on Cantilever



High Storage of Fabric has been observed on Cantilever Slab

Loads On Cantilever

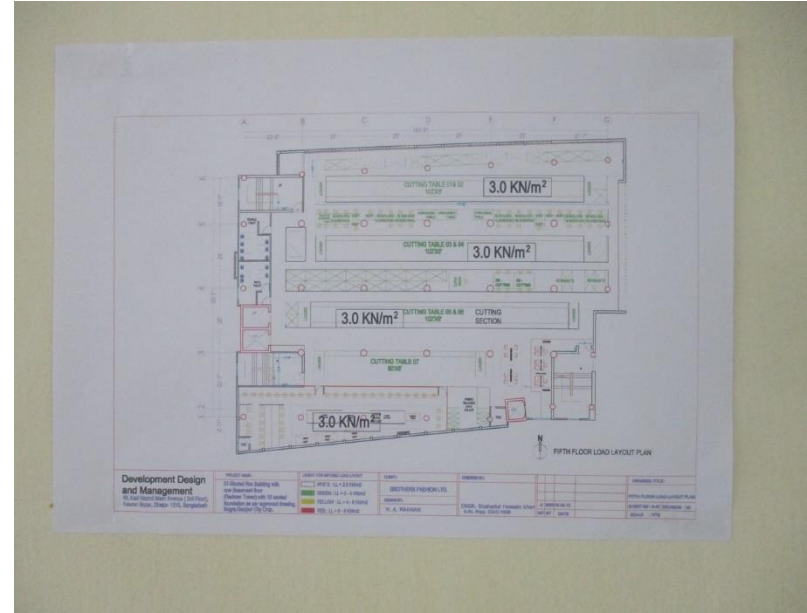


Total with 150mm build up on cantilever slab

Loads On Cantilever



High Storage Load on Ground Floor

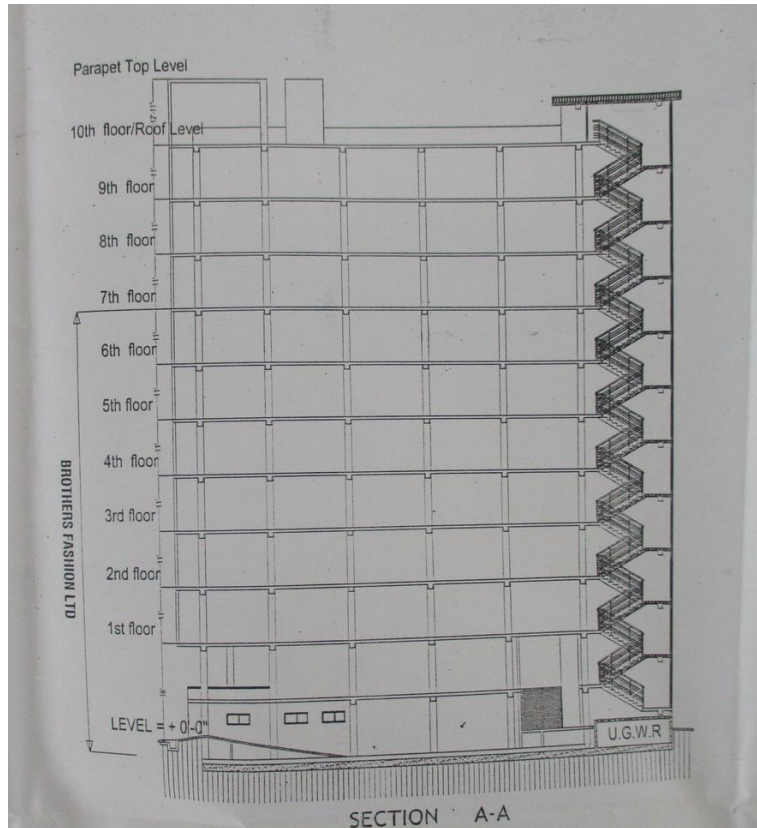


The Load Plan Posted on Ground Floor shows that allowable load limit is 3kn/m² but high storage load more than 3kn/m² has been observed on Ground floor

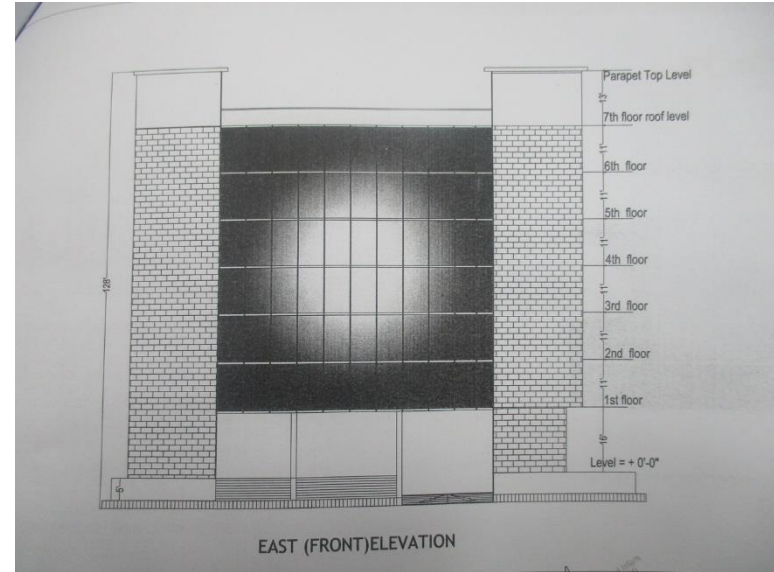
High Storage Load on Ground Floor



3. High stress levels will exist in columns if all floor levels have been constructed



Approved Drawing (10 story)



As built during inspection (8 story)

The building was permitted as 10-Storeyed building from local authority. During inspection, it was observed that the column was extending which shows sign of possible vertical extension in future. This vertical extension will cause high stress on columns.

High stress levels will existing columns if all floor levels have been constructed



Problems Observed

Item 1: Discrepancies in Structural Documentation.

Item 2: High Loading On cantilever slab & Ground Floor.

Item 3: High stress levels will exist in columns if all floor levels have been constructed.

Item No.	Observation	Recommended Action Plan	Recommended Timeline
1	Discrepancies in Structural Documentation.	Re survey the building paying particular attention to Column schedule & Floor beam layout.	6-weeks
2	Discrepancies in Structural Documentation.	Update structural drawings to match as built site conditions.	6-weeks
3	High Loading On cantilever slab & Ground Floor.	Building engineer to review if the cantilever slabs are adequate to carry imposed loading	6-weeks
4	High Loading On cantilever slab & Ground Floor.	Implement load plan properly	6-months
5	High stress levels will exist in columns if all floor levels have been constructed	If future vertical extension is intended (beyond 6th floor), conduct DEA for the factory building following BNBC.	6-weeks
6	High stress levels will exist in columns if all floor levels have been constructed	Implement any necessary remedial measures which will be the outcome of DEA.	6-months