

FIRE SAFETY INSPECTION REPORT

COLUMBIA APPARELS LTD

228/1, TIN SHARAK, LUXMIPURA, JOYDEVPUR

OTHER FACTORIES: GENESIS FASHIONS LTD.



ACCORD
on Fire and Building Safety in Bangladesh

March 2, 2014

SUMMARY

Columbia Apparels Ltd was surveyed for fire safety on 3/2/2014 by Hughes Associates, Inc. This summary identifies the major deficiencies that were identified during the inspection.

The purpose of this survey was to identify significant fire safety issues and to provide recommendations for remediation based on applicable standards specified by the Accord. The scope of this initial fire safety inspection was limited to the review and identification of major fire safety issues. The inspection did not include identification of minor deficiencies, which will be further addressed as part of follow-up inspections.

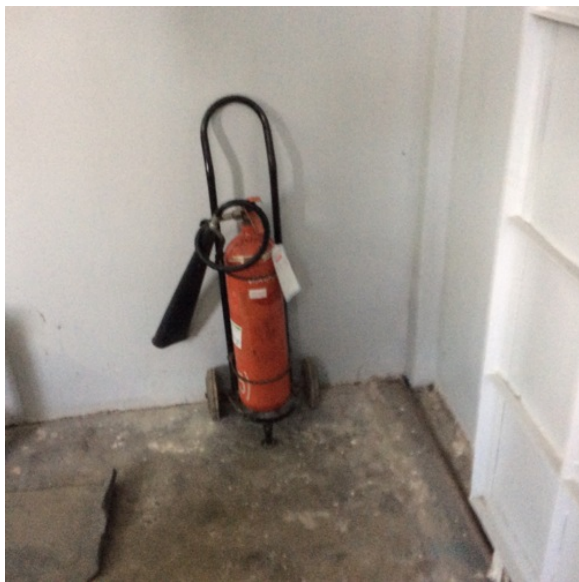
Table 1 summarizes the major fire safety issues identified during the inspection. Recommendations have been provided to address each issue.

An implementation schedule shall be developed by the factory to remediate each of the findings. The specific timing of improvements, including any requested extensions due to design / installation constraints, shall be submitted to the Accord for approval.

Table 1. Findings And Recommendations

No.	Category	Finding	Recommendation	Remediation Timeframe
-----	----------	---------	----------------	--------------------------

F-1	Fire Rated Construction	The boiler room is not separated by fire-rated construction due to non-rated doors and unsealed penetrations.	Separate the boiler room by a minimum 2-hr fire-rated construction. Seal and/or protected all openings to maintain the required fire separations	Within 3 months
-----	----------------------------	---------------------------------------------------------------------------------------------------------------	--------------------------------------------------------------------------------------------------------------------------------------------------	-----------------



F-2	Fire Rated Construction	The generator room is not separated by fire-rated construction due to openings and non-rated doors.	Separate the generator room by a minimum 2-hr fire-rated construction. Seal and/or protected all openings to maintain the required fire separations	Within 3 months
-----	----------------------------	-----------------------------------------------------------------------------------------------------	-----------------------------------------------------------------------------------------------------------------------------------------------------	-----------------



F-3	Fire Rated Construction	The generator and transformer are not separated by fire-rated construction. They are stored in the same room.	Separate the generator and transformer in separate rooms separated by a minimum 2-hr fire-rated construction. Seal and/or protected all openings to maintain the required fire separations	Within 3 months
-----	-------------------------	---------------------------------------------------------------------------------------------------------------	--------------------------------------------------------------------------------------------------------------------------------------------------------------------------------------------	-----------------





F-4	Fire Rated Construction	<p>Areas used for combustible storage are not separated by fire-rated construction.</p>	<p>Provide dedicated storage rooms separated by minimum 1-hr fire-rated construction.</p>	<p>Within 3 months</p>
		<p>Each factory level has a large storage room on the north side which has multiple non-fire-rated doors connecting it to the factory floor. There are also significant quantity of storage open to the factory floors.</p>	<p>Where separate storage rooms are not feasible, provide defined storage areas and limit the storage arrangement as follows:</p> <ul style="list-style-type: none"> - Maximum height of 2.4m and maximum area of 23m² - If sprinkler protected: maximum height of 3.66m and maximum area of 93m² <p>Separate areas of unenclosed combustible storage by a minimum clear distance of 3m.</p>	



F-5	Fire Rated Construction	The exit stairs are not separated from work areas or other spaces on each floor by fire-rated construction.	Provide minimum 1.5-hr fire rated doors and seal all unprotected openings to separate the exit stairs from work areas and other building spaces on all floor levels. Ensure that the fire doors are self-closing and positive latching and that they are provided with fire exit (panic) hardware where serving production floors. If fire doors are required to be held open for functional reasons, provide automatic-closing devices tied to the fire alarm system.	Within 3 months
-----	-------------------------	-------------------------------------------------------------------------------------------------------------	-------------------------------------------------------------------------------------------------------------------------------------------------------------------------------------------------------------------------------------------------------------------------------------------------------------------------------------------------------------------------------------------------------------------------------------------------------------------------------	-----------------



F-6	Egress	Exit capacity is not adequate for the occupant load.	Reduce occupant load to not more than 650 each on 1st-4th floors immediately.	Immediate
		1st-4th floors each have 1000 occupants or more, only 3 exits, and exit capacity is only 650.	In the future provide additional exits to serve the 1st-4th floors.	
F-7	Egress	Egress doors / gates with locking features are provided at all exit stair openings.	Remove locking features from all egress doors / gates. If locks are required for security reasons, utilize special door locking features complying with NFPA 101.	Immediate



F-8

Egress

Collapsible gates / sliding doors are provided at all exit stair openings.


Replace all gates / sliding doors along the means of egress with side-hinged, swinging egress doors.

Within 1 month

If locks are required for security reasons, utilize special door locking features complying with NFPA 101.



F-9	Egress	Travel distance from storage room on 1st-4th floors can exceed 300 feet.	Provide additional exits so that travel distance is 200 feet or less from all points of each floor.	Within 3 months
-----	--------	--------------------------------------------------------------------------	-----------------------------------------------------------------------------------------------------	-----------------

F-10	Egress	<p>The exits are not remotely located from each other such that a single fire event could compromise both exits.</p> <p>The two southeast stairs are immediately adjacent to each other, and could both be easily compromised by a single fire.</p>	<p>Add additional exits so that no more than 50% of the total exit capacity can be compromised by a single fire.</p>	<p>Within 3 months</p>
F-11	Egress	<p>Storage was located in the exit stair.</p> <p>Boxes and lockers were located in the southeast stairs.</p>	<p>Remove all storage from exit stairs and egress paths.</p>	<p>Within 3 months</p>
				
F-12	Fire Protection	<p>The fire alarm system is antiquated, not a listed system, and does not provide alarm and notification features consistent with acceptable standards.</p>	<p>Replace the fire alarm system with a new, listed addressable fire alarm system in accordance with NFPA 72.</p>	<p>Design within 4 months, install within 9 months</p>



F-13	Fire Protection	Inspection, testing, and maintenance for the fire alarm system was not in accordance with NFPA 72.	Inspect, test and maintain the fire alarm system, and keep written records on-site, in accordance with NFPA 72.	Within 3 months
------	-----------------	----------------------------------------------------------------------------------------------------	-----------------------------------------------------------------------------------------------------------------	-----------------

F-14	Fire Protection	The building is equipped with single-station smoke alarms. Smoke alarm activation sounds only a local alarm and does not provide automatic fire alarm notification of occupants.	Replace the single-station smoke alarms with automatic smoke detectors tied into the fire alarm system. Configure the fire alarm system to initiate occupant notification upon activation of any two smoke detectors in addition to the manual fire alarm stations.	Within 6 months
------	-----------------	----------------------------------------------------------------------------------------------------------------------------------------------------------------------------------	---------------------------------------------------------------------------------------------------------------------------------------------------------------------------------------------------------------------------------------------------------------------	-----------------

