

Findings & Recommendations :

Table 1 summarizes the major fire safety issues identified during the inspection. Recommendations have been provided to address each issue.

An implementation schedule shall be developed by the factory to remediate each of the findings. The specific timing of improvements, including any requested extensions due to design / installation constraints, shall be submitted to the Accord for approval.

SI No.	Category	Findings	Required Action	Remediation Time Frame
F-1	Fire Rated Construction	LT panel room (Utility Building) is not properly separated by fire rated construction with other Occupancies/Areas.	LT panel room shall be separated from other occupancies by a minimum 2-hr fire rated construction (wall, floor, slab etc.). Seal all penetrations and openings (door, window etc.) should be protected by 1.5-hr fire rated materials to maintain the fire separation if required. All exhaust systems shall discharge to the exterior of the building in a safe location.	03 Month





F-2	Fire Rated Construction	Rooms used for storage of combustible materials are not separated from the surrounding occupancy/areas. Location: Ground floor.	Rooms used for storage of combustible materials shall be separated from the surrounding occupancy with a minimum 1 hour construction.	Within 3 months
-----	-------------------------	---	---	-----------------





F-3	Storage Areas	Areas used for combustible storage are not separated by fire-rated construction	<p>Provide dedicated storage rooms separated by minimum 1-hr fire-rated construction.</p> <p>Where separate storage rooms are not feasible, provide defined storage areas and limit the storage arrangement as follows:</p> <ul style="list-style-type: none"> - Maximum height of 2.4m and maximum area of 23m² - If sprinkler protected: maximum height of 3.66m and maximum area of 93m² <p>Separate areas of unenclosed combustible storage by a minimum clear distance of 3m</p>	Within 3 months
-----	---------------	---	---	-----------------





F-4	Fire Rated Construction	The exit stairs are not separated from [work areas, other spaces] on each floor by fire rated construction.	<p>Provide minimum 1.5-hr fire rated doors and seal all unprotected openings to separate the exit stairs from work areas and other building spaces on all floor levels. Ensure that the fire rated doors are self-closing and positive latching and that they are provided with fire exit (panic) hardware where serving production floors.</p> <p>If fire rated doors are required to be held open for functional reasons, provide automatic closing devices tied to the fire alarm system.</p> <p>Once fire doors are installed, every door in a stair enclosure serving more than 5 stories shall be provided with re-entry unless it meets ACCORD standard 6.8.3.1</p>	Within 3 months
-----	-------------------------	---	--	-----------------





F-5

Unsealed Stair Penetrations

Unsealed penetrations and openings are located in the exit stair enclosures

Seal all penetrations and openings in exit stair enclosure walls to maintain the fire separations.

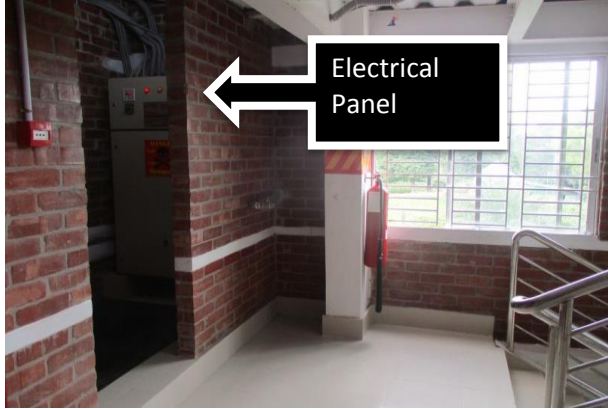
Within 3 months





F-6	Storage in Egress Path	Storage was located in the egress path.	Keep egress path and stair clear of storage.	Immediate
-----	------------------------	---	--	-----------





Electrical Panel



Fire Equipments



F-7	Storage in Exit Stair	Storage was located in exit stair.	Remove storage from the exit stairs and egress path	Immediate
-----	-----------------------	------------------------------------	---	-----------



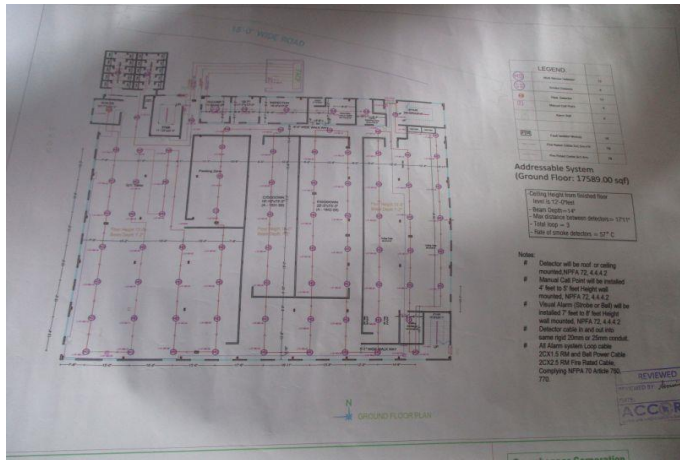
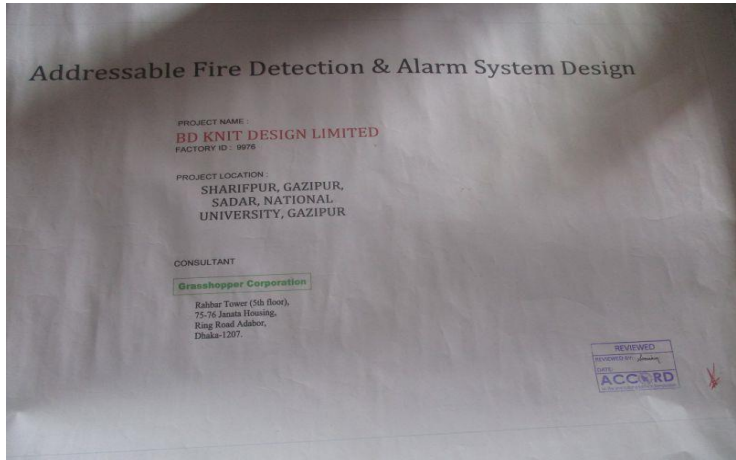
F-8	Sliding Door & Gates	Collapsible gates/sliding doors/rolling shutter doors are provided at [building exits, exit stairs, along egress routes, exit discharge]	<p>Replace all collapsible gates/ sliding doors/ rolling shutter doors along the means of egress with side-hinged, swinging egress doors.</p> <p>If locks are required for security reasons, utilize specialized door locking features complying with NFPA101.</p>	Within 1 month
-----	----------------------	--	--	----------------



F-9	Lockage Egress Doors	Egress doors/gates with locking features not complying with NFPA101 are provided at [building exits, exit stairs, along egress routes, exit discharge]	Remove locking features from all egress doors/gates. If locks are required for security reasons, utilize specialized door locking features complying with NFPA101.	Immediate
-----	-------------------------	---	--	-----------



F-10	Fire Alarm and Detection system	The existing fire alarm & detection system is not installed properly. Still few areas are out of detection system. (design already reviewed dy Accord)	Prepare as-built drawings, testing records, equipment certification and other relevant documentation to the ACCORD for review and approval.	Within 9 months (Install within 9 months)
------	---------------------------------	---	---	---




F-11	Fire Detection ITM	Inspection, testing, and maintenance for the fire detection system is not in accordance with NFPA 72.	Inspect, test and maintain the fire detection system, and keep written records on-site, in accordance with NFPA 72.	Within 3 months
F-12	No smoking sign	The required no smoking signs are not present in the factory.	Smoking is prohibited in any garment factory building or separate storage building. Signs shall be posted in Bengali and English at all building entrances. If the factory creates a designated smoking area outside the building, information of these areas will be posted on the signs.	Within 1 month
F-13	Inadequate Lighting	Based on the number and location of emergency lights observed, adequate illumination levels are not anticipated along egress routes.	Test the emergency lighting system on each floor and provide additional emergency fixtures to provide adequate illumination along the means of egress. Provide a minimum illumination of 10 lux at the floor level within exit stairs and exit discharge paths and minimum 2.5 lux along exit access aisles.	Within 3 months





F-14	Emergency Lighting ITM	Inspection, testing, and maintenance for the emergency lighting system was not in accordance with The ACCORD standard.	Inspect, test and maintain the emergency lighting system in the accordance with The ACCORD standard. Keep written records on-site.	Within 3 months
------	------------------------	--	--	-----------------



F-15	Fire Protection	Inspection, testing and maintenance of portable fire extinguishers is not in accordance with NFPA 10.	Inspect, test and maintain the portable fire extinguishers and keep written records onsite, in accordance with NFPA 10.	Within 3 months
		Manual on-off switch facility available for emergency lights those are installed at top of exit doors.	Remove manual on/off switches from emergency lighting units to prevent them from being switched off.	Within 1 month





F-17	Non-Working Exit Signs	Exit signage not illuminated (burned out, broken, etc.).	Regularly inspect all exit signage and replace/install lights as needed to illuminate signs	Within 1 month
------	------------------------	--	---	----------------





F-18	Door Swing Direction	Exit stair door/egress door serving 50 or more occupants does not swing in the direction of egress travel.	Modify the egress door to swing in the direction of egress travel.	Within 1 month
------	----------------------	--	--	----------------

