



Baridhi Garments Limited

SFB#7, Comilla Export Processing Zone, Comilla, Bangladesh
(23.444001N, 91.183039E)

20th June 2016

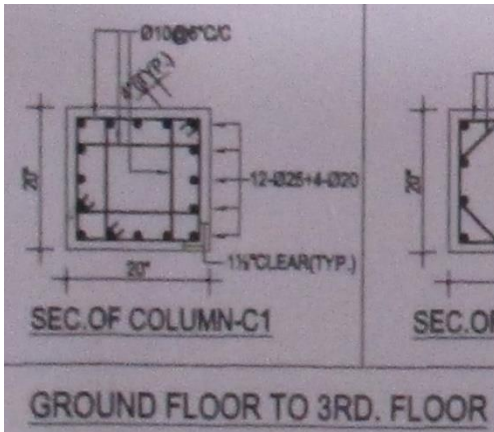




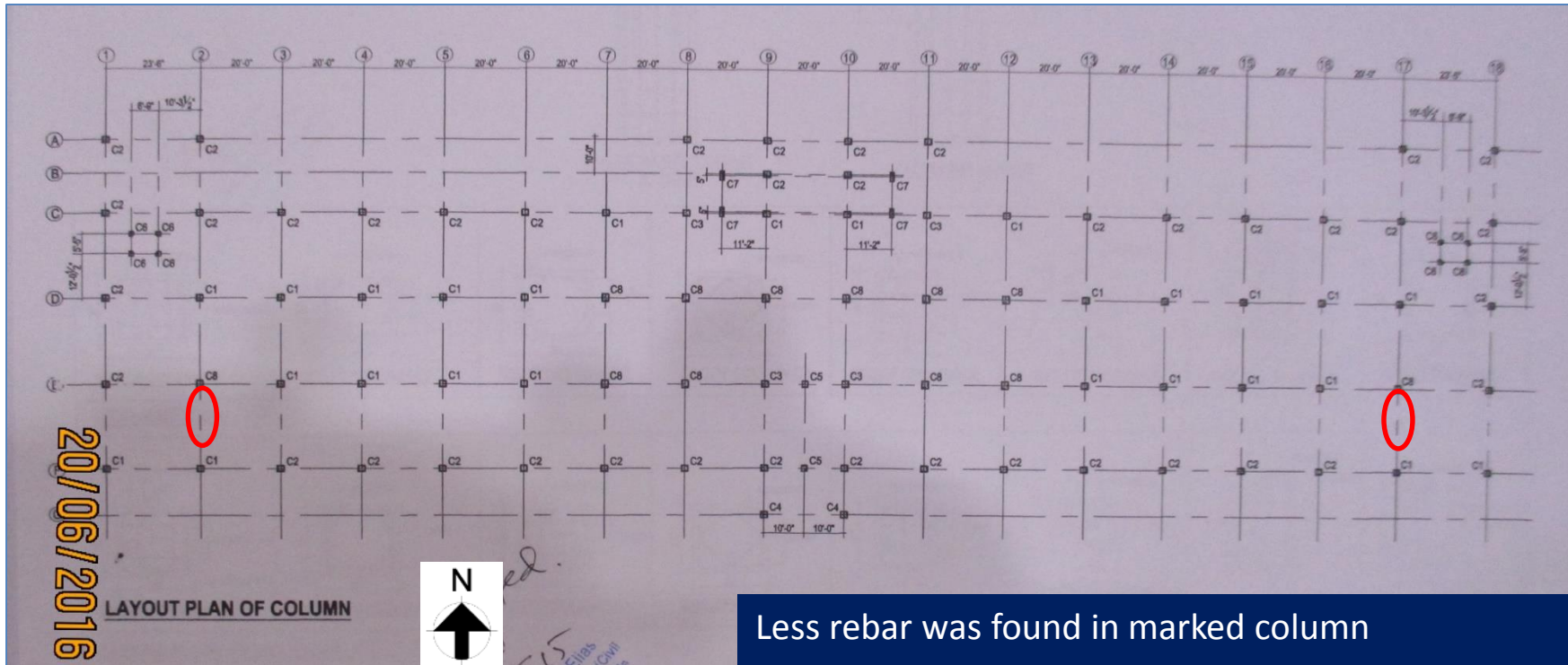
Observations



Discrepancies between as-built drawings and site observations.



Detail scan found 4 rebar on one side but column schedule shows 5 rebar on both side.



Less rebar was found in marked column

Discrepancies between as-built drawings and site observations



No water proofing at roof.



Damaged water proofing material at roof.

No water proofing at roof



Damp on ground floor slab under toilet area.



Dampness observed at GF floor slab under toilet area.

Damp on ground floor slab under toilet area



Poor connection between roof shed and brick column.



Poor connection with brick wall and roof shed..



Improper connection was found between roof shed and wall.



Poor connection with brick wall and roof shed..

**Poor connection between roof shed and brick column.
(Wastage Godown and workshop)**



Problems Observed

Main Factory Building

Item 1: Discrepancies between as-built drawings and site observations

Item 2: No water proofing at roof

Item 3: Damp on ground floor slab under toilet area.

Wastage Godown & Workshop shed

Item 1: Poor connection between roof shed and brick column.



Item No.	Observation	Recommended Action Plan	Recommended Timeline
1	Discrepancies between as-built drawings and site observations	Produce a set of as built drawings	6-weeks
2	Discrepancies between as-built drawings and site observations	Produce an actively managed load plan considering slab, beam and column capacity	6-weeks
3	Discrepancies between as-built drawings and site observations	Implement load plan.	6-months
4	No water proofing at roof	Provide Water Proofing layer on roof.	6-months
5	Damp on ground floor slab under toilet area	Take proper action to prevent water ingress in slab to protect slab from possible corrosion.	6-months
6	Poor connection between roof shed and brick column	Connection of roof shed and wall should be checked for uplift force.	6-months