

FIRE SAFETY INSPECTION REPORT

**THE NEW DELTA APPARELS LTD.
ROAD 1/A PLOT 6,8,10, MOHAMMADPUR**

OTHER FACTORIES: NONE



ACCORD
on Fire and Building Safety in Bangladesh

July 3, 2014

SUMMARY

The New Delta Apparels Ltd. was surveyed for fire safety on 7/3/2014 by Hughes Associates, Inc. This summary identifies the major deficiencies that were identified during the inspection.

The purpose of this survey was to identify significant fire safety issues and to provide recommendations for remediation based on applicable standards specified by the Accord. The scope of this initial fire safety inspection was limited to the review and identification of major fire safety issues. The inspection did not include identification of minor deficiencies, which will be further addressed as part of follow-up inspections.

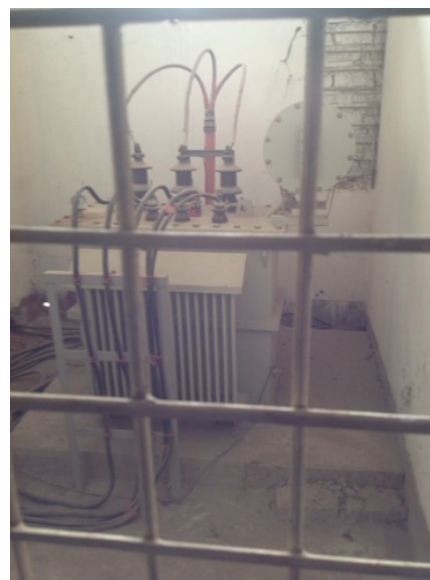
Table 1 summarizes the major fire safety issues identified during the inspection. Recommendations have been provided to address each issue.

An implementation schedule shall be developed by the factory to remediate each of the findings. The specific timing of improvements, including any requested extensions due to design / installation constraints, shall be submitted to the Accord for approval.

Table 1. Findings And Recommendations

No.	Category	Finding	Recommendation	Remediation Timeframe
-----	----------	---------	----------------	-----------------------

F-1	Fire Rated Construction	The boiler, generator, transformer room is not separated by fire-rated construction (openings, non-rated doors, penetrations) on the ground floor.	Separate the boiler, generator, transformer room by a minimum 2-hr fire-rated construction. Seal and/or protected all openings to maintain the required fire separations	Within 3 months
-----	-------------------------	--	--	-----------------





F-2	Fire Rated Construction	Areas used for storage on the ground floors warehouse and floors 6,4, and 1 are not separated by fire rated construction.	Provide dedicated storage rooms separated by minimum 1-hr fire-rated construction. Where separate storage rooms are not feasible, provide defined storage areas and limit the storage arrangement as follows: - Maximum height of 2.4m and maximum area of 23m ² - If sprinkler protected: maximum height of 3.66m and maximum area of 93m ² Separate areas of unenclosed combustible storage by a minimum clear distance of 3m.	Within 3 months
-----	-------------------------	---	--	-----------------



F-3	Fire Rated Construction	Exit stairs is not separated from work areas, other spaces on each floor by fire-rated construction.	Provide minimum 1.5-hr fire rated doors and seal all unprotected openings to separate the exit stairs from work areas and other building spaces on all floor levels. Ensure that the fire doors are self-closing and positive latching and that they are provided with fire exit (panic) hardware where serving production floors. If fire doors are required to be held open for functional reasons, provide automatic-closing devices tied to the fire alarm system.	Within 3 months
-----	-------------------------	--	---	-----------------





F-4 Egress

Egress doors and gates with locking features are provided at building exits, exit stairs, along egress routes, exit discharge. These locking features can be found on all exits.

Remove locking features from all egress doors / gates.

If locks are required for security reasons, utilize special door locking features complying with NFPA 101.

Immediate





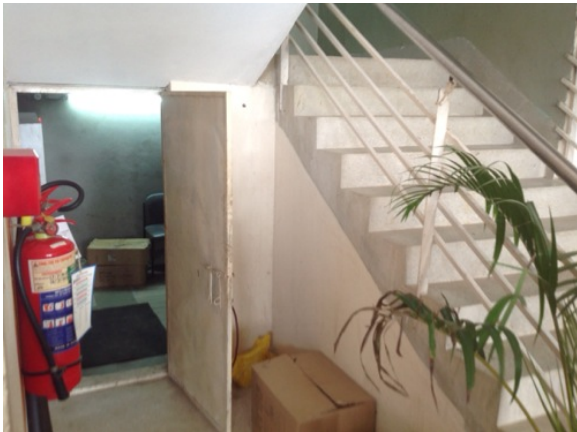
F-5 Egress

Storage was located in the exit stair discharges of both exit stairwells.

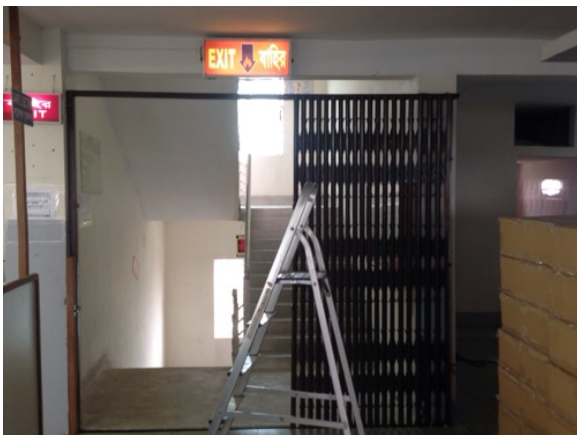
Remove all storage from exit stairs and egress paths.

Immediate





F-6	Egress	Storage was located in the egress path on the fifth floor north exit path.	Keep egress paths and stairs clear of storage.	Immediate
-----	--------	--	--	-----------



F-7	Egress	Collapsible gates and sliding doors are provided at building exits, exit stairs, along egress routes, exit discharge throughout the factory.	Replace all gates / sliding doors along the means of egress with side-hinged, swinging egress doors. If locks are required for security reasons, utilize special door locking features complying with NFPA 101.	Within 1 month
-----	--------	--	--	----------------



F-8 Egress

The day-care room does not have direct access to an exit stair. Located on ground floor in storage warehouse.

Relocate day-care room to another location on the ground floor with maximum travel distance of 9m (30 ft).

Within 3 months



F-9	Fire Protection	The fire alarm system is antiquated, not a listed system, and does not provide alarm and notification features consistent with acceptable standards.	Replace the fire alarm system with a new, listed addressable fire alarm system in accordance with NFPA 72.	Design within 4 months, install within 9 months
-----	-----------------	--	--	---



F-10	Fire Protection	Inspection, testing, and maintenance of the fire alarm system is not in accordance with NFPA 72.	Inspect, test and maintain the fire alarm system, and keep written records on-site, in accordance with NFPA 72.	Within 3 months
------	-----------------	--	---	-----------------

F-11	Fire Protection	The building is equipped with single-station smoke alarms. Smoke alarm activation sounds only a local alarm and does not provide automatic fire alarm notification of occupants.	Remove single-station smoke alarms. Provide automatic smoke detection throughout the building, tied into the fire alarm system, in accordance with NFPA 72.	Within 6 months
------	-----------------	--	---	-----------------



F-12	Egress Lighting	Manual on-off switch is provided for emergency lighting and exit signage units in both exit stairwells all floors.	Remove manual on/off switches from emergency lighting and exit signage units to prevent them from being switched off.	Within 1 month
------	-----------------	--	---	----------------

F-14	Egress Lighting	Based on the number and location of emergency lights observed, adequate illumination levels are not anticipated along egress routes throughout the factory.	Test the emergency lighting system on each floor and provide additional emergency fixtures to provide adequate illumination along the means of egress. Provide a minimum illumination of 10 lux at the floor level within exit stairs and exit discharge paths and minimum 2.5 lux along exit access aisles.	Within 3 months
------	-----------------	---	--	-----------------