

FIRE SAFETY INSPECTION REPORT

KSS KNIT COMPOSITE LTD.

ACCORD ID: 12444

ADDRESS: Bagherchala, Sreepur, Gazipur

Other Factories: None



Inspected By: Md. Mah mudur Rahman & Safawan Abyaz
Date: April 19, 2016



Fire Safety Inspection Report

KSS Knit Composite Ltd.

Introduction

KSS Knit Composite Ltd. complex was surveyed for fire safety on 19/04/2016 by The Accord Inspection Team. The purpose of the survey was to identify significant fire safety issues and to provide recommendations for remediation based on applicable standards specified by the Accord. The scope of this initial fire safety inspection was limited to the review and identification of major fire safety issues. The inspection did not include identification of minor deficiencies, which will be further addressed as part of follow-up inspections.

Limitations

The information in this fire safety inspection report was obtained during a visit to the facility and during interviews with local factory management. It has not been possible to provide independent verification for all the information and data collected, and, therefore, The Accord cannot accept general responsibility for omissions or errors arising from inaccuracies in this report from the information obtained.

The findings and recommendations in this report are not intended to imply, guarantee, ensure or warrant compliance with any government regulations. Additionally, the results do not imply in any way that compliance with the findings or recommendations as stated in this report will eliminate all hazards, risks or exposures or that hazards, risks or exposures not referred to in this report do not exist. Compliance with the findings and recommendations stated in this report does not relieve the factory owner from obligation to comply with specific project requirements, industry standards, or the provisions of any local government regulations.



General Factory Information

Factory Building Name(s): KSS Knit Composite Ltd.

Factory Address: Bagherchala, Sreepur, Gazipur.

Points of Contact:

Mohammad Rafiqul Islam

General Manager,

Cell: +88 01914 939319, E-mail: rafiqul_kss@mitalifashions.net

Engr. Md. Shahinuzzaman

Manager, Construction

Cell: +88 01711 371297, Email: engr.shahin@mitalifashions.net



Findings & Recommendations

Table 1 summarizes the major fire safety issues identified during the inspection. Recommendations have been provided to address each issue. An implementation schedule shall be developed by the factory to remediate each of the findings. The specific timing of improvements, including any requested extensions due to design / installation constraints, shall be submitted to the Accord for approval.

Sl No.	Category	Finding	Required Action	Remediation Time Frame
--------	----------	---------	-----------------	------------------------

1	Fire Rated Construction	Diesel/fuel storage has been observed very near to generator room and not separated by fire rated construction	Separate the diesel/fuel storage room by a minimum 2-hr fire-rated construction. Seal and/or protected all openings to maintain the required fire separations.	Within 03 Months
---	-------------------------	--	--	------------------



2	Fire Rated Construction	The exit stairs are not separated from [work areas, other spaces] on each floor by fire-rated construction.	Stair shall be enclosed with a minimum 2-hr fire-rated construction. Seal all unprotected openings and provide minimum 1.5-hr fire rated doors to separate the exit stairs from work areas and other building spaces on all floor levels. Ensure that the fire doors are self-closing, positive latching and that they are provided with fire exit (panic) hardware where serving production floors. If fire doors are required to be held open for functional reasons, provide automatic-closing devices tied to the fire alarm system.	Within 03 Months
---	-------------------------	---	---	------------------

Note: Building has considered as 06 storey based on architectural plan.





- | | | | | |
|---|--------------------------------|---|--|------------------------|
| 3 | <p>Fire Rated Construction</p> | <p>Unsealed penetrations and openings are located in exit stair enclosures.
 Location(s): Ground floor, S-E exit stair</p> | <p>Seal all penetrations and openings in the wall of exit enclosure walls (full thickness of the wall) by fire rated materials to maintain the fire resistance rating.</p> | <p>Within 01 Month</p> |
|---|--------------------------------|---|--|------------------------|



- | | | | | |
|---|--------------------------------|---|---|-------------------------|
| 4 | <p>Fire Rated Construction</p> | <p>Areas used for in-process storage of combustible materials are open to the surrounding occupancy</p> | <p>Provide defined storage areas and limit the storage arrangement as follows:-</p> <ol style="list-style-type: none"> 1. General Condition: Maximum height of 2.4m and maximum area of 23m². Separate areas of unenclosed combustible storage by a minimum clear distance of 3m. 2. If sprinkler protected: maximum height of 3.66m and maximum area of 93m². Separate areas of unenclosed combustible storage by a minimum clear distance of 3m. <p>or</p> <ol style="list-style-type: none"> 3. Enclose the storage area from the surrounding occupancy with a minimum 1 hour construction. | <p>Within 03 Months</p> |
|---|--------------------------------|---|---|-------------------------|





5 Fire Rated Construction

Rooms used for storage of combustible materials are not separated from the surrounding occupancy/areas by fire rated construction

Rooms used for storage of combustible materials shall be separated from the surrounding occupancy with a minimum 1 hour construction. Seal all penetrations and openings in floor/ceiling (full thickness of the floor/ceiling) assemblies by fire rated materials to maintain the fire resistance rating.

Within 03 Months



6	Egress	Collapsible/sliding/shutter type doors have provided along means of egress	<p>Replace all collapsible/sliding/shutter type doors & gates by the side-hinged swinging type doors.</p> <p>If locks are required for security reasons, utilize special door locking features complying with NFPA 101.</p>	Within 01 Month
---	--------	--	---	-----------------



7	Egress	Doors along means of egress are provided with non compliant locking system.	<ol style="list-style-type: none"> 1. Remove all non compliant locking features from egress doors. 2. If locks are required for security reasons, utilize special door locking features complying with NFPA 101. 3. Doors may be locked where the latch and lock are disengaged with one motion where the occupant load does not exceed 49 persons. 4. Doors may be provided with locking hardware from the ingress side provided that a panic bar is installed on any door with an occupant load exceeding 49 persons. 	Immediate
---	--------	---	---	-----------



8	Egress	Un-safe exit has been provided from compressor room. Steep flight of steel stair and through generator room makes it un-safe	Provide a protected and safe exit from compressor room	Within 01 Months
---	--------	--	--	------------------



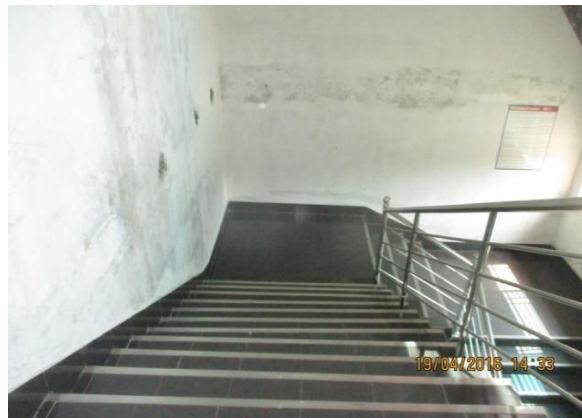
9	Egress	Width of aisles is less than 0.9m (36-in.) and in few cases aisles has been found block	Aisles shall be provided with a minimum unobstructed clear-width of 0.9 m (36 in.). Keep egress paths and stairs clear of storage.	Within 01 Months
---	--------	---	--	------------------



10	Egress	Due to provision of single exit on north side of store room, the length of dead end of corridor/aisle exceeds 100 ft. Location: Store room at ground floor	The maximum length of dead end of corridor/aisles shall 23m/75 ft. Note: Requirement for non sprinklered building.	Within 03 Months
----	--------	--	--	------------------



11	Egress	Fire evacuation maps is not posted at the entrance of all exit stair.	Fire evacuation maps shall be posted at the entrance to each exit stair.	Within 01 Months
12	Egress	Handrails are not provided in the exit stair. Location: All stair	Provide handrails on both side of exit stair having a minimum height 34 in.	Within 03 Months



13	Egress	Occupant load sign and stair designation sign has not been posted in the exit stair	Provide occupant load sign and stair designation sign at all level in the exit stair both Bengali and English	Within 01 Month
14	Egress Lighting	Exit sign is not provided at all exits.	Lighted exit signs shall be placed at entrance to an exit. Additional exit signs shall be placed throughout the facility anywhere the continuation of the egress is not obvious. Lighted exit signs shall be provided with either battery backup or uninterruptable power supply systems and shall be continuously illuminated. Illuminated directional signs shall be provided where there is a change in the direction for the path of travel and the direction to an exit is not obvious.	Within 01 Month





- | | | | | |
|----|-----------------|---|--|-----------------|
| 15 | Egress Lighting | Exit signage & Emergency lights were not illuminated during testing (burned out, broken, etc.). | Regularly inspect all exit signage and emergency lighting units as per Accord standard and replace/install lights as needed to illuminate signs. | Within 01 Month |
|----|-----------------|---|--|-----------------|



- | | | | | |
|----|-----------------|--|--|-----------------|
| 16 | Egress Lighting | Based on the number and location of emergency lights observed, adequate illumination levels are not anticipated along egress routes. | Test the emergency lighting system on each floor and provide additional emergency fixtures to provide adequate illumination along the means of egress. Provide a minimum illumination of 10 lux at the floor level within exit stairs and exit discharge paths and minimum 2.5 lux along exit access aisles. | Within 01 Month |
|----|-----------------|--|--|-----------------|





- | | | | | |
|----|-------------------------------|---|---|--|
| 17 | Fire Alarm & Detection System | <p>The existing fire alarm system is not a listed system and does not provide automatic alarm and notification features consistent with acceptable standards.</p> | <p>Replace the fire alarm system with a new, listed addressable fire alarm system in accordance with NFPA 72.</p> | <p>Design within 04 Months & Installation within 09 Months</p> |
|----|-------------------------------|---|---|--|



- | | | | | |
|----|-------------------------------|---|--|-------------------------|
| 18 | Fire Alarm & Detection System | <p>The building is equipped with single-station smoke alarms. Smoke alarm activation sounds only a local alarm and does not provide automatic fire alarm notification of occupants.</p> | <p>Remove single-station smoke alarms. Provide automatic smoke detection throughout the building, tied into the fire alarm system, in accordance with NFPA 72.</p> | <p>Within 06 Months</p> |
|----|-------------------------------|---|--|-------------------------|





19	Fire Alarm & Detection System	<p>Inspection, testing, and maintenance for the fire alarm system is not in accordance with NFPA 72 or as per Accord standard.</p>	<p>Inspect, test and maintain the fire alarm system, and keep written records on-site, in accordance with NFPA 72 or as per Accord standard.</p> <p>The factory will start to maintain it after complete installation of the system</p>	Within 03 Months
20	Water Based Fire Protection System	<p>The existing factory building with an occupiable floor greater than 10 m (33 ft.) above the finished grade is not protected with an approved standpipe system.</p>	<p>Provide a standpipe system throughout the building in accordance with NFPA 14.</p>	<p>Design within 04 Months & Installation within 09 Months</p>
		<p>Note: This issue will be applicable, if the building is extend vertically</p>		

