

FIRE SAFETY INSPECTION REPORT

**DIVINE TEXTILE LTD.
CHANDRA, KALIAKOIR**

OTHER FACTORIES: NONE



ACCORD
on Fire and Building Safety in Bangladesh

March 31, 2014

SUMMARY

Divine Textile Ltd. was surveyed for fire safety on 3/31/2014 by Hughes Associates, Inc. This summary identifies the major deficiencies that were identified during the inspection.

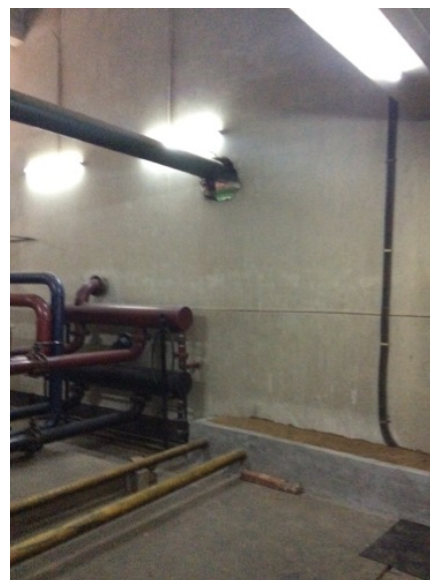
The purpose of this survey was to identify significant fire safety issues and to provide recommendations for remediation based on applicable standards specified by the Accord. The scope of this initial fire safety inspection was limited to the review and identification of major fire safety issues. The inspection did not include identification of minor deficiencies, which will be further addressed as part of follow-up inspections.

Table 1 summarizes the major fire safety issues identified during the inspection. Recommendations have been provided to address each issue.

An implementation schedule shall be developed by the factory to remediate each of the findings. The specific timing of improvements, including any requested extensions due to design / installation constraints, shall be submitted to the Accord for approval.

Table 1. Findings And Recommendations

No.	Category	Finding	Recommendation	Remediation Timeframe
F-1	Fire Rated Construction	The boiler room is not separated by fire-rated construction (openings, non-rated doors, penetrations).	Separate the boiler room by a minimum 2-hr fire-rated construction. Seal and/or protected all openings to maintain the required fire separations	Within 3 months

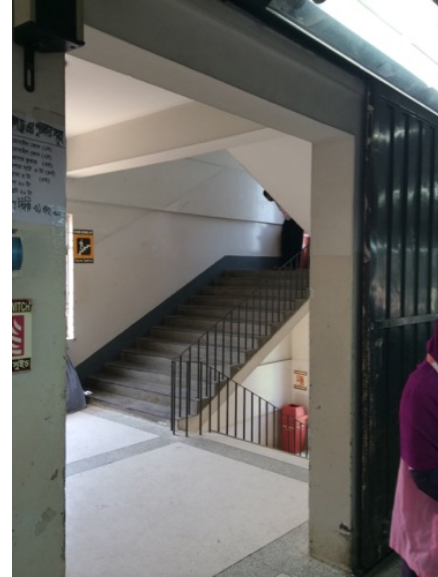


F-2	Fire Rated Construction	Areas used for combustible storage are not separated by fire-rated construction. Multiple floors within building.	Provide dedicated storage rooms separated by minimum 1-hr fire-rated construction. Where separate storage rooms are not feasible, provide defined storage areas and limit the storage arrangement as follows: - Maximum height of 2.4m and maximum area of 23m ² - If sprinkler protected: maximum height of 3.66m and maximum area of 93m ² Separate areas of unenclosed combustible storage by a minimum clear distance of 3m.	Within 3 months
-----	-------------------------	--	--	-----------------

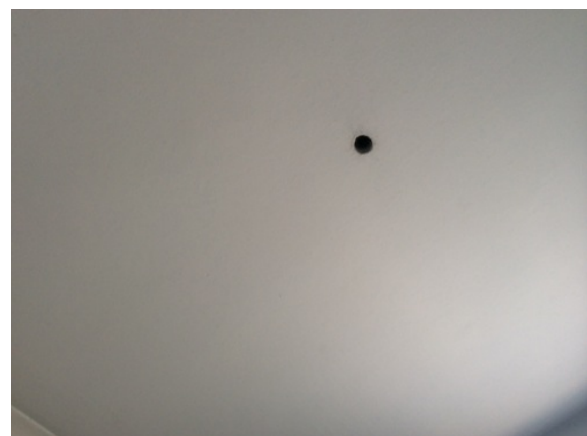




F-3	Fire Rated Construction	The exit stairs are not separated from work areas and other spaces on each floor by fire-rated construction.	Provide minimum 1.5-hr fire rated doors and seal all unprotected openings to separate the exit stairs from work areas and other building spaces on all floor levels. Ensure that the fire doors are self-closing and positive latching and that they are provided with fire exit (panic) hardware where serving production floors. If fire doors are required to be held open for functional reasons, provide automatic-closing devices tied to the fire alarm system.	Within 3 months
-----	-------------------------	--	---	-----------------



F-4	Fire Rated Construction	Unsealed penetrations and openings are located in the fire-rated floor/ceiling and wall assemblies.	Provide a minimum 2-hr fire-rated shaft to separate the utility risers from each floor level.	Within 3 months
			Seal all penetrations and openings in floor/ceiling assemblies to maintain the fire separation.	



F-5	Fire Rated Construction	Unsealed penetrations and openings are located in exit stair enclosures.	Seal all penetrations and openings in exit stair enclosure walls to maintain the fire separation.	Within 3 months
-----	-------------------------	--	---	-----------------

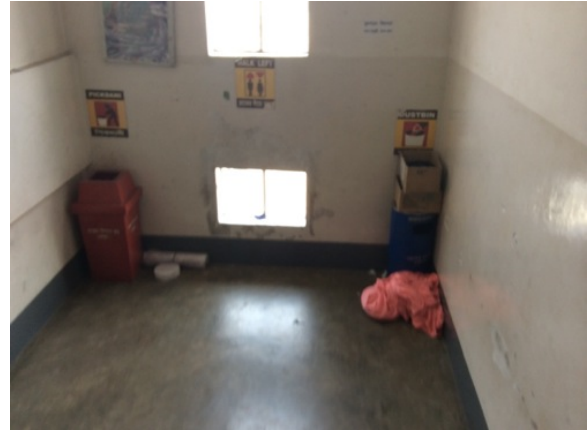


F-6	Egress	Storage was located in the egress path.	Keep egress paths and stairs clear of storage.	Immediate
-----	--------	---	--	-----------

Locations:
Accessory building
2nd floor



F-7 Egress Storage was located in the exit stair. Remove all storage from exit stairs and egress paths. Immediate



F-8	Egress	Collapsible gates / sliding doors are provided at building exits, exit stairs, along egress routes, and exit discharge. Locations: All floors	Replace all gates / sliding doors along the means of egress with side-hinged, swinging egress doors. If locks are required for security reasons, utilize special door locking features complying with NFPA 101.	Within 1 month
				

F-9	Egress	Egress doors / gates with locking features are provided at building exits, exit stairs, along egress routes, and exit discharge. Location: All Floors Gates/doors were open and unlocked during the inspection.	Remove locking features from all egress doors / gates. If locks are required for security reasons, utilize special door locking features complying with NFPA 101.	Within 3 months
-----	--------	--	--	-----------------



F-10	Egress	The width of egress aisles is less than 36-in.	Provide minimum aisle widths of 36-in.	Within 3 months
------	--------	--	--	-----------------

Locations:
2nd Floor.



F-11	Fire Protection	The building is equipped with some single-station smoke alarms. Smoke alarm activation sounds only a local alarm and does not provide automatic fire alarm notification of occupants.	Replace the single-station smoke alarms with automatic smoke detectors tied into the fire alarm system. Configure the fire alarm system to initiate occupant notification upon activation of any two smoke detectors in addition to the manual fire alarm stations.	Design within 4 months, install within 9 months
------	-----------------	---	---	---



F-12	Fire Protection	Inspection, testing, and maintenance records for the fire alarm system were not available.	Inspect, test and maintain the fire alarm system, and keep written records on-site, in accordance with NFPA 72.	Within 3 months
------	-----------------	--	---	-----------------

F-13	Egress Lighting	Based on the number and location of emergency lights observed, adequate illumination levels are not anticipated along egress routes.	Test the emergency lighting system on each floor and provide additional emergency fixtures to provide adequate illumination along the means of egress. Provide a minimum illumination of 10 lux at the floor level within exit stairs and exit discharge paths and minimum 2.5 lux along exit access aisles.	Within 3 months
------	-----------------	--	--	-----------------

F-14	Egress Lighting	Inspection, testing, and maintenance for the emergency lighting system was not in accordance with The ACCORD standard.	Inspect, test and maintain the emergency lighting system in accordance with The ACCORD standard. Keep written records on-site.	Within 3 months
------	-----------------	--	--	-----------------