

Reza Fashion Ltd

Gorat, Baghbari, Ashulia, Savar, Dhaka.
(23.949330N, 90.305780E)

01 April 2014



Building Observations

Cracking of non-structural brick wall infill



At annexe building (Utility building at ground floor)



Main building





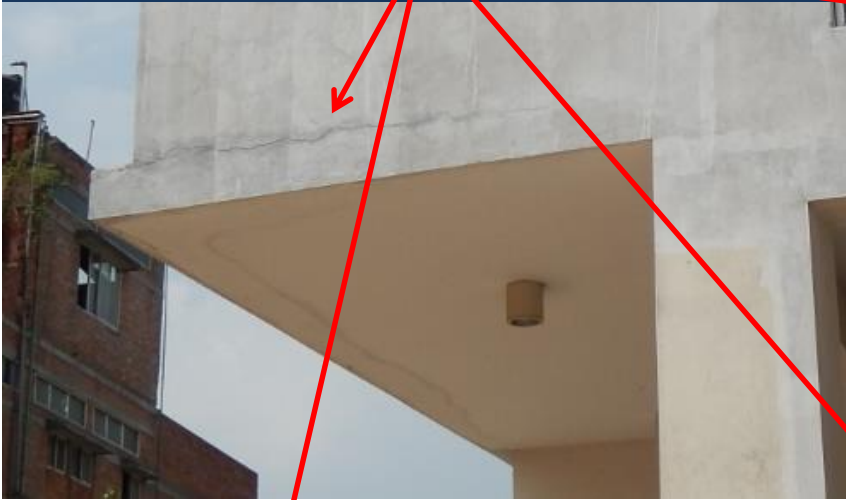
Crude expansion joint fishing



Cracking at expansion joint

5 Cracking at movement joint

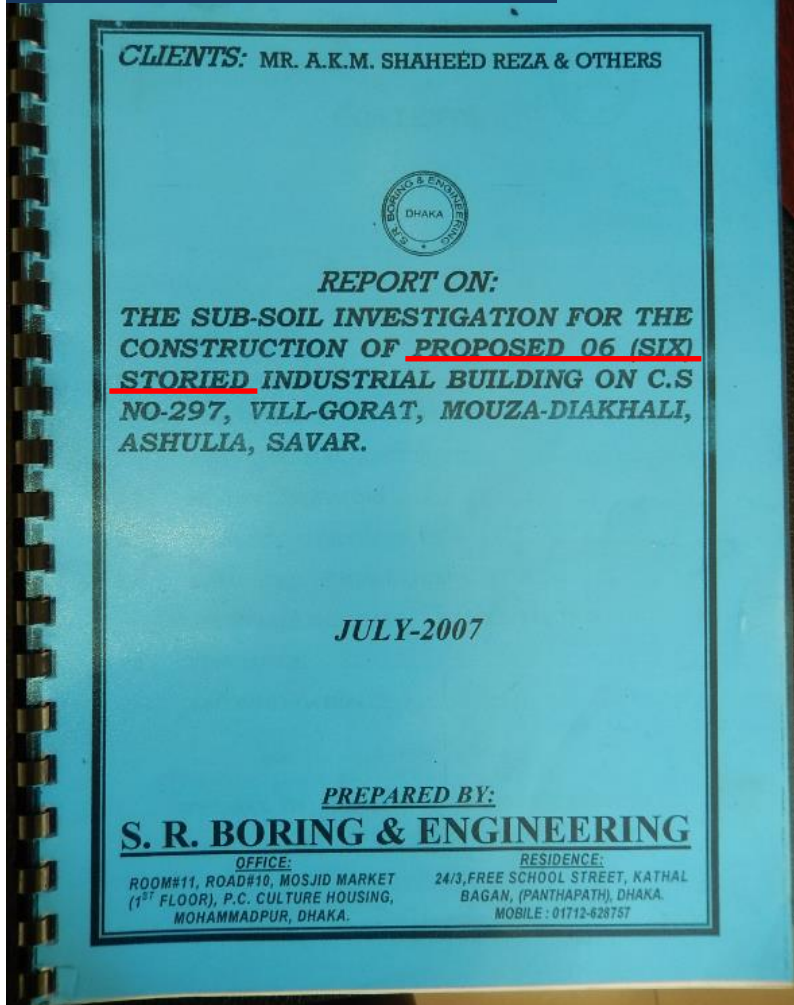
Minor cracking at cantilever slabs,
caused by rigid brick infill over flexible
slab



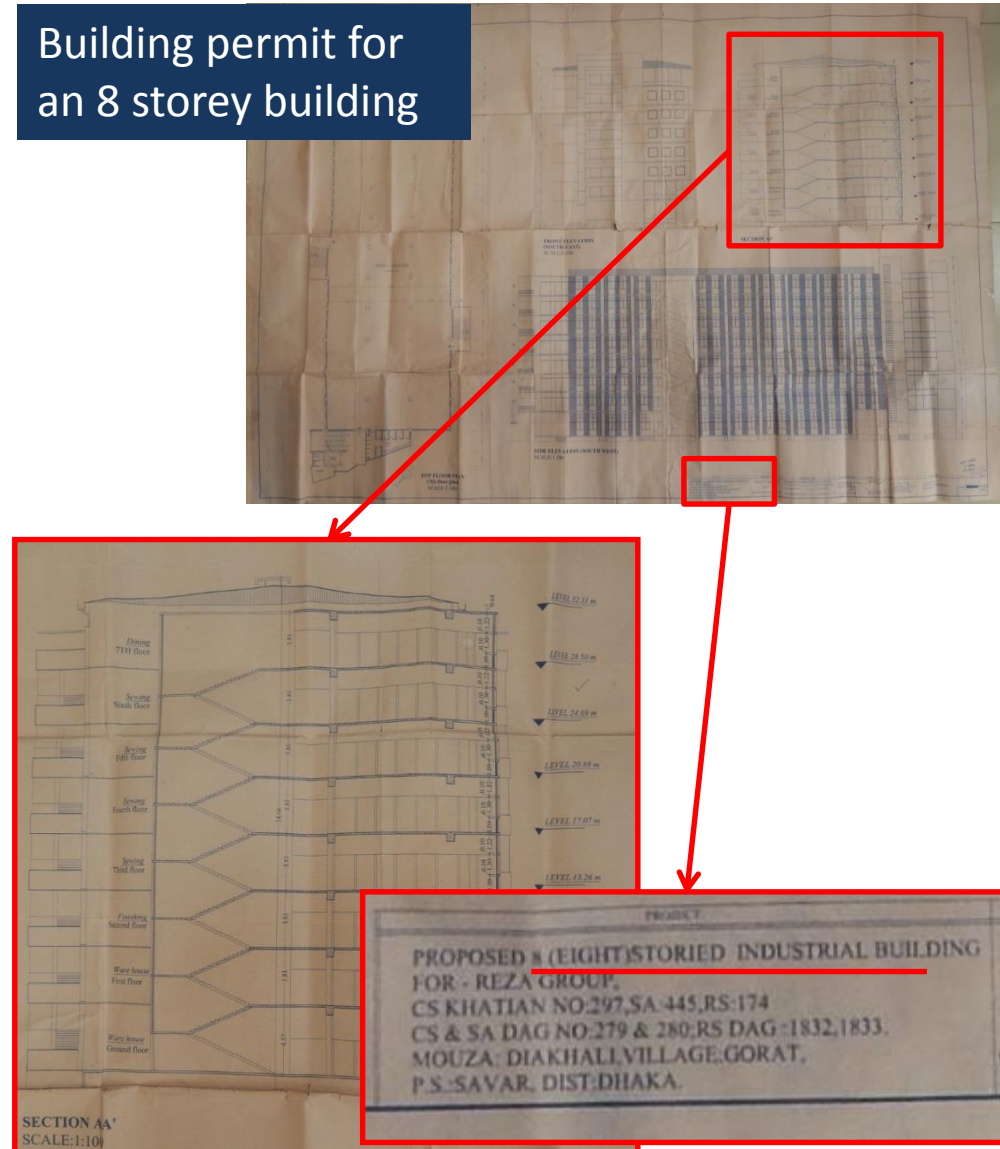
Cracking at cantilevers

Discrepancy of documentation

Soil investigation report
for a 6 storey building



Building permit for
an 8 storey building



Discrepancy of documentation

Priority Actions

Problems Observed

(non structural observations only)

ITEM 1: Cracking of non-structural brick wall infill

ITEM 2: Discrepancy in Building Documentation

Item No.	Observation	Recommended Action Plan	Recommended Timeline
1	Cracking of non-structural brick wall infill	Engineer to regularly monitor cracks and, in case the cracks increase, review structural behaviour	6-months
2	Cracking of non-structural brick wall infill	Repair cracks in the external wall to ensure water tightness	6-months
3	Discrepancy in Building Documentation	Before adding additional floors, verify with engineer and soils engineer the capacity of the foundations and the ground conditions to receive the loads of additional floors	6-months