

FIRE SAFETY INSPECTION REPORT

DEKKO DESIGNS LTD

PURBA NAROSHINHAPUR, ASHULIA, SAVAR, DHAKA

OTHER FACTORIES: NONE



ACCORD
on Fire and Building Safety in Bangladesh

Bangladesh Accord
Foundation

April 23, 2014

SUMMARY

Dekko Designs Ltd was surveyed for fire safety on 4/23/2014 by Hughes Associates, Inc. This summary identifies the major deficiencies that were identified during the inspection.

The purpose of this survey was to identify significant fire safety issues and to provide recommendations for remediation based on applicable standards specified by the Accord. The scope of this initial fire safety inspection was limited to the review and identification of major fire safety issues. The inspection did not include identification of minor deficiencies, which will be further addressed as part of follow-up inspections.

Table 1 summarizes the major fire safety issues identified during the inspection. Recommendations have been provided to address each issue.

An implementation schedule shall be developed by the factory to remediate each of the findings. The specific timing of improvements, including any requested extensions due to design / installation constraints, shall be submitted to the Accord for approval.

Table 1. Findings And Recommendations

No.	Category	Finding	Recommendation	Remediation Timeframe
F-1	Fire Rated Construction	All 5 exit stairs are not separated from work areas, other spaces on each floor by fire-rated construction.	<p>Provide minimum 1.5-hr fire rated doors and seal all unprotected openings to separate the exit stairs from work areas and other building spaces on all floor levels. Ensure that the fire doors are self-closing and positive latching and that they are provided with fire exit (panic) hardware where serving production floors.</p> <p>If fire doors are required to be held open for functional reasons, provide automatic-closing devices tied to the fire alarm system.</p>	Within 3 months



F-2	Fire Rated Construction	Unsealed penetrations and openings are located in exit stair enclosures. The elevator shaft is open on each floor of the North East most stairwell.	Seal all penetrations and openings in exit stair enclosure walls to maintain the fire separation.	Within 3 months
-----	-------------------------	---	---	-----------------



F-3	Fire Rated Construction	Areas used for combustible storage are not separated by fire-rated construction on the ground, mezzanine and fourth floors. All storage is open to production and office spaces.	<p>Provide dedicated storage rooms separated by minimum 1-hr fire-rated construction.</p> <p>Where separate storage rooms are not feasible, provide defined storage areas and limit the storage arrangement as follows:</p> <ul style="list-style-type: none"> - Maximum height of 2.4m and maximum area of 23m² - If sprinkler protected: maximum height of 3.66m and maximum area of 93m² <p>Separate areas of unenclosed combustible storage by a minimum clear distance of 3m.</p>	Within 6 months
-----	-------------------------	--	--	-----------------





F-4	Egress	Egress glass doors and steel sliding gates with locking features are provided at building exits, exit stairs All gates/doors were open and unlocked during the inspection.	Remove locking features from all egress doors / gates. If locks are required for security reasons, utilize special door locking features complying with NFPA 101.	Immediate
-----	--------	---	--	-----------





F-5 Egress

Storage was located throughout the exit stairs. Trash cans, Finished Goods etc.

Remove all storage from exit stairs and egress paths.

Immediate





F-6 Egress

The exit capacity is not adequate for the occupant load on the first, second, and third floors.

Reduce occupant load to not more than available exit capacity immediately.


Immediate

In the future, if greater occupant load is desired, provide additional exits to allow for the increased occupancy on each floor.



F-7	Egress	Collapsible gates and sliding doors are provided at building exits and exit stairs on all floors.	Replace all gates / sliding doors along the means of egress with side-hinged, swinging egress doors.	Within 1 month
			If locks are required for security reasons, utilize special door locking features complying with NFPA 101.	

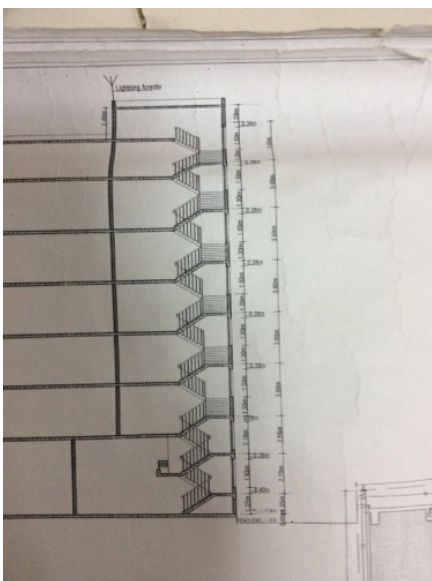


F-8	Egress	The width of egress aisles is less than 36-in on the fourth,third, second and first floors due to structural column design and layout of sewing machines.	Provide minimum aisle widths of 36-in.	Within 3 months
				

F-9	Egress	The Mezzanine Exit stairs discharge inside the building with the East most stair discharging through a storage area before entering the ground floor. The North most stair located midway along the elevation does not discharge directly to the ground floor but to the first floor production floor only.	Provide 2-hr fire-rated exit passageway leading directly outside, with vestibules to separate any storage areas.	Within 6 months
-----	--------	---	--	-----------------



F-10	Fire Protection	<p>The high-rise building has an occupied floor greater than 23m (75 ft) and is not provided with automatic sprinkler protection. The large occupant loads, heavy fuel loading, and anticipated extended egress times warrant sprinkler protection.</p>	<p>Provide automatic sprinkler protection throughout the building in accordance with NFPA 13.</p>	<p>Design within 6 months, install within 12 months</p>
------	-----------------	---	---	---



F-11	Fire Protection	Inspection, testing, and maintenance of the fire alarm system is not in accordance with NFPA 72.	Inspect, test and maintain the fire alarm system, and keep written records on-site, in accordance with NFPA 72.	Within 3 months
F-12	Egress Lighting	Inspection, testing, and maintenance for the emergency lighting system were not in accordance with The ACCORD standard.	Inspect, test and maintain the emergency lighting system in accordance with The ACCORD standard. Keep written records on-site.	Within 3 months
