

FIRE SAFETY INSPECTION REPORT

**PIONEER CASUAL WEAR LTD.
ZAMGORA, EARPUR UNION, SAVAR**

OTHER FACTORIES: OCEAN & DESIGN (BD) LTD.



ACCORD
on Fire and Building Safety in Bangladesh



June 18, 2014

SUMMARY

Pioneer Casual Wear Ltd. was surveyed for fire safety on 6/18/2014 by Hughes Associates, Inc. This summary identifies the major deficiencies that were identified during the inspection.

The purpose of this survey was to identify significant fire safety issues and to provide recommendations for remediation based on applicable standards specified by the Accord. The scope of this initial fire safety inspection was limited to the review and identification of major fire safety issues. The inspection did not include identification of minor deficiencies, which will be further addressed as part of follow-up inspections.

Table 1 summarizes the major fire safety issues identified during the inspection. Recommendations have been provided to address each issue.

An implementation schedule shall be developed by the factory to remediate each of the findings. The specific timing of improvements, including any requested extensions due to design / installation constraints, shall be submitted to the Accord for approval.

Table 1. Findings And Recommendations

No.	Category	Finding	Recommendation	Remediation Timeframe
F-1	Fire Rated Construction	The boiler, generator and transformer rooms are not separated by fire-rated construction (openings, non-rated doors, penetrations).	Separate the boiler, generator and transformer rooms by a minimum 2-hr fire-rated construction. Seal and/or protected all openings to maintain the required fire separations.	Within 3 months





F-2	Fire Rated Construction	Rooms used for combustible storage on the 2nd, 3rd, 4th and shed 2 are not separated by fire-rated construction.	Provide dedicated storage rooms separated by minimum 1-hr fire-rated construction.	Within 3 months
-----	-------------------------	--	--	-----------------





F-3	Fire Rated Construction	The exit stairs are not separated from work areas or other spaces on each floor by fire-rated construction.	<p>Provide minimum 1.5-hr fire rated doors and seal all unprotected openings to separate the exit stairs from work areas and other building spaces on all floor levels. Ensure that the fire doors are self-closing and positive latching and that they are provided with fire exit (panic) hardware where serving production floors.</p> <p>If fire doors are required to be held open for functional reasons, provide automatic-closing devices tied to the fire alarm system.</p>	Within 3 months
-----	-------------------------	---	--	-----------------



F-4	Fire Rated Construction	Unsealed penetrations and openings on the 2nd floor are located in the fire-rated floor/ceiling assemblies.	Provide a minimum 2-hr fire-rated shaft to separate the utility risers from each floor level.	Within 3 months
			Seal all penetrations and openings in floor/ceiling assemblies to maintain the fire separation.	

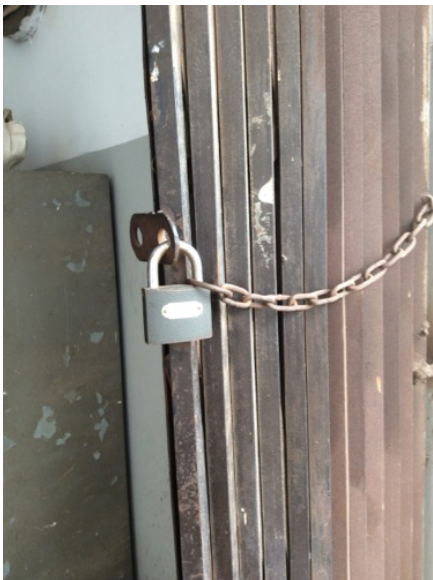


F-5	Fire Rated Construction	Unsealed penetrations and openings are located in all exit stair enclosures. The northeast exit stairs were openings between stairs and work area.	Seal all penetrations and openings in exit stair enclosure walls to maintain the fire separation.	Within 3 months
-----	-------------------------	--	---	-----------------





F-6	Egress	Egress doors / gates with locking features are provided at building exits, exit stairs, along egress routes and exit discharge.	Remove locking features from all egress doors / gates. If locks are required for security reasons, utilize special door locking features complying with NFPA 101.	Immediate
-----	--------	---	--	-----------



F-7	Egress	Storage was located in all exit stairs.	Remove all storage from exit stairs and egress paths.	Immediate
-----	--------	---	---	-----------



F-8	Egress	Collapsible gates / sliding doors are provided at building exits, exit stairs, along egress routes and exit discharge.	<p>Replace all gates / sliding doors along the means of egress with side-hinged, swinging egress doors.</p> <p>If locks are required for security reasons, utilize special door locking features complying with NFPA 101.</p>	Within 1 month
-----	--------	--	---	----------------



F-9	Egress	Exit stair door / egress door serving 50 or more occupants on the 2nd, 3rd, out of the building and shed 2 did not swing in the direction of egress travel.	Modify the egress door to swing in the direction of egress travel.	Within 3 months
-----	--------	---	--	-----------------



F-10	Egress	Handrails are not provided on the ground floor in northeast exit stairs.	Provide handrails on at least one side of exit stair.	Within 3 months
------	--------	--	---	-----------------



F-11	Egress	The south exit stairs on the ground and 4th floors, and southwest exit stairs discharge inside the building.	Provide 2-hr fire-rated exit passageway leading directly outside (vestibules to separate any storage areas) or Provide sprinkler protection for discharge floor in accordance with NFPA 13.	Within 6 months
------	--------	--	---	-----------------



F-12	Fire Protection	The bell on the 3rd floor and manual fire alarm switch on the 2nd and 4th floors were not in working order.	Regularly test the fire alarm system on each floor and replace/repair fire alarm device as needed.	Immediate
F-13	Fire Protection	Activation of the fire alarm system by a manual fire alarm station provides automatic occupant notification only the floors occupied by the factory of alarm and not throughout the building.	Configure the fire alarm system to initiate automatic occupant notification on all floor levels to facilitate whole-building evacuation upon any manual fire alarm station activation.	Within 1 months
F-14	Fire Protection	Inspection, testing, and maintenance of the fire alarm system is not in accordance with NFPA 72.	Inspect, test and maintain the fire alarm system, and keep written records on-site, in accordance with NFPA 72.	Within 3 months
F-15	Fire Protection	Based off observations, the existing smoke detectors tied to the fire alarm were not adequately spaced in the shed 2.	Based on ceiling configuration, provide additional detectors where needed, and space them in accordance with NFPA 72.	Within 3 months



F-16	Fire Protection	Based off observations, the existing smoke detectors tied to the fire alarm were not adequately provided in the north, south sides and some rooms.	Based on ceiling configuration, provide additional detectors where needed, and space them in accordance with NFPA 72.	Within 3 months
------	------------------------	--	---	-----------------





F-17	Fire Protection	The fire alarm system on 2nd and 3rd floors did not appear to provide adequate audible notification coverage.	Provide additional notification appliances such that the fire alarm system is audible throughout the building in accordance with NFPA 72.	Within 6 months
F-18	Egress Lighting	Exit sign on the 2nd floor not provided at exit.	Provide exit signs above all exits to the exterior and all doors to the exit stairs.	Within 1 month



F-19 Egress Lighting

Exit signages on the 3rd floor and shed 2 not illuminated (burned out, broken, etc.).

Regularly inspect all exit signage and replace/install lights as needed to illuminate signs.

Within 1 month





F-20	Egress Lighting	Emergency lightings on the 2nd and 3rd floors did not function in test mode (burned out, broken, etc.).	Regularly test the emergency lighting system on each floor and replace/repair lights as needed.	Within 1 month
------	-----------------	---	---	----------------



F-21	Egress Lighting	Manual on-off switch is provided for emergency lighting / exit signage units.	Remove manual on/off switches from emergency lighting / exit signage units to prevent them from being switched off.	Within 1 month
------	-----------------	---	---	----------------



F-22	Egress Lighting	Emergency lightings on the 3rd and 4th floors not provided at exit.	Provide emergency light in the egress paths.	Within 1 month
F-23	Egress Lighting	Inspection, testing, and maintenance for the emergency lighting system was not in accordance with The ACCORD standard.	Inspect, test and maintain the emergency lighting system in accordance with The ACCORD standard. Keep written records on-site.	Within 3 months