

# **FIRE SAFETY INSPECTION REPORT**

**ARUNIMA APPARELS LTD.  
RISING COMPLEX, PLOT# I/10, BLOCK-K, RUPNAGAR  
I/A, SECTION-2**



**ACCORD**  
on Fire and Building Safety in Bangladesh

March 25, 2014

## **SUMMARY**

**Arunima Apparels Ltd. was surveyed for fire safety on 3/25/2014 by Hughes Associates, Inc. This summary identifies the major deficiencies that were identified during the inspection.**

**The purpose of this survey was to identify significant fire safety issues and to provide recommendations for remediation based on applicable standards specified by the Accord. The scope of this initial fire safety inspection was limited to the review and identification of major fire safety issues. The inspection did not include identification of minor deficiencies, which will be further addressed as part of follow-up inspections.**

**Table 1 summarizes the major fire safety issues identified during the inspection. Recommendations have been provided to address each issue.**

**An implementation schedule shall be developed by the factory to remediate each of the findings. The specific timing of improvements, including any requested extensions due to design / installation constraints, shall be submitted to the Accord for approval.**

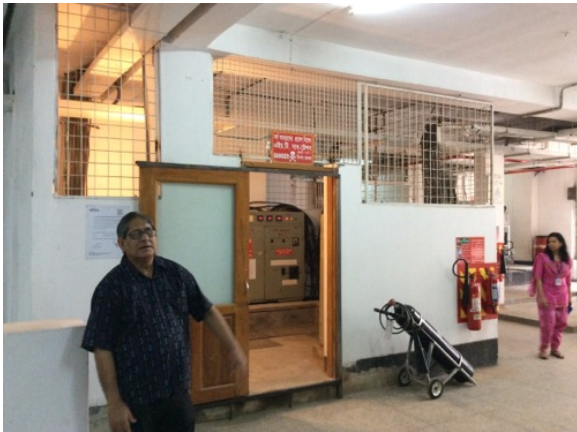
**Table 1. Findings And Recommendations**

No.	Category	Finding	Recommendation	Remediation Timeframe
-----	----------	---------	----------------	-----------------------

F-1	Fire Rated Construction	The boiler rooms on the fifth floor are not separated by fire-rated construction due to non-rated doors and penetrations.	Separate the boiler rooms by a minimum 2-hr fire-rated construction. Seal and/or protected all openings to maintain the required fire separations	Within 3 months
-----	-------------------------	---	---	-----------------



F-2	Fire Rated Construction	The electrical room on the ground floor is not separated by fire-rated construction due to unprotected openings and penetrations.	Separate the electrical room by a minimum 2-hr fire-rated construction. Seal and/or protected all openings to maintain the required fire separations	Within 3 months
-----	-------------------------	---	--	-----------------



F-3	Fire Rated Construction	The electrical panels on all floors are not separated by fire-rated construction and are open to egress routes.	Separate the by a minimum 2-hr fire-rated construction. Seal and/or protected all openings to maintain the required fire separations	Within 3 months
-----	-------------------------	---	--	-----------------





F-4	Fire Rated Construction	<p>Areas used for combustible storage are not separated by fire-rated construction.</p> <p>Specifically the fifth floor storage room and the basement warehouse.</p> <p>Factory operations (office and fabric inspection) were observed in the basement storage areas.</p>	<p>Provide dedicated storage rooms separated by minimum 1-hr fire-rated construction.</p> <p>Separate factory operations from the dedicated storage areas with 1-hr fire-rated construction or alternately, relocate factory operations from the basement.</p>	Within 3 months
-----	-------------------------	--	--	-----------------



F-5	Fire Rated Construction	The elevator machine room is not separated by fire-rated construction due to a non-rated doors.	Separate the elevator machine room by a minimum 2-hr fire-rated construction. Seal and/or protected all openings to maintain the required fire separations	Within 3 months
-----	-------------------------	---	--	-----------------



F-6	Fire Rated Construction	<p>The exit stairs are not separated from work areas and other spaces on each floor by fire-rated construction.</p> <p>The existing fire doors are rated for 1-hr (documentation provided).</p>	<p>Provide minimum 1.5-hr fire rated doors and seal all unprotected openings to separate the exit stairs from work areas and other building spaces on all floor levels.</p> <p>Ensure that the fire doors are self-closing and positive latching and that they are provided with fire exit (panic) hardware where serving production floors.</p> <p>If fire doors are required to be held open for functional reasons, provide automatic-closing devices tied to the fire alarm system.</p>	Within 3 months
-----	-------------------------	---	---	-----------------



F-7	Fire Rated Construction	Unsealed electrical penetrations and openings are located in the fire-rated floor/ceiling assemblies on all floors.	Provide a minimum 2-hr fire-rated shaft to separate the utility risers from each floor level.  Seal all penetrations and openings in floor/ceiling assemblies to maintain the fire separation.	Within 3 months
-----	-------------------------	---	--	-----------------



F-8	Fire Rated Construction	Unsealed penetrations and openings are located in the fire-rated ceiling assembly of the basement warehouse.	Seal all penetrations and openings in the ceiling assembly to maintain the fire separation.	Within 3 months
-----	-------------------------	--	---	-----------------



---

F-9	Fire Rated Construction	The generator area on the ground floor is not separated by fire-rated construction and is open to surrounding areas. The door adjacent to Diesel Generator #2 discharges directly to an exit enclosure. Also, the unprotected opening to the exterior, adjacent to Diesel Generator #2, is open to an exit discharge.	Separate the generator area by a minimum 2-hr fire-rated construction. Seal and/or protected all openings to maintain the required fire separations.	Within 3 months
-----	-------------------------	---	--	-----------------



F-10	Egress	<p>Egress doors and gates with locking features are provided at building exits, exit stairs, along egress routes, and at exit discharge in various locations throughout the factory. All gates and doors were open and unlocked during the inspection excluding the southwest stairwell entrance to the first floor. However this exit was not required to meet egress capacity and at least two remote exits were provided.</p>	<p>Remove locking features from all egress doors and gates.</p> <p>If locks are required for security reasons, utilize special door locking features complying with NFPA 101.</p>	Immediate
------	--------	--	---	-----------



F-11	Egress	<p>Storage was located in several of the exit stairs.</p>	<p>Remove all storage from exit stairs and egress paths.</p>	Immediate
------	--------	---	--	-----------



F-12	Egress	Collapsible gates and sliding doors are provided at building exits, exit stairs, along egress routes, and at exit discharge in various locations throughout the factory.	<p>Replace all gates and sliding doors along the means of egress with side-hinged, swinging egress doors.</p> <p>If locks are required for security reasons, utilize special door locking features complying with NFPA 101.</p>	Within 1 month
------	--------	--	---	----------------



F-13	Egress	The width of egress aisles along the east wall is less than 36-in. on all factory floors.	Provide minimum aisle widths of 36-in.	Within 3 months
------	--------	---	--	-----------------

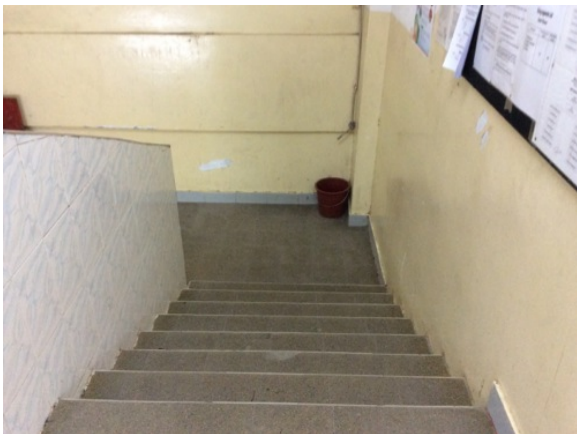


F-14 Egress

Handrails are not provided in the central southwest exit stair and at the bottom of the southwest exit stair.

Provide handrails on at least one side of exit stair.

Within 3 months



F-15 Egress

Non serving electric appliances are located in the stairwells.

Remove and relocate the non serving electric appliances to the exterior of the stairwells.

Within 3 months



F-16 Egress

Signage next to the elevators stating "In Case of Fire Don't Use Lift" is not supplied on all floors.

Supply signage next to the elevators on all floors

Within 3 months



F-17	Fire Protection	<p>The fire alarm system is antiquated, not a listed system, and does not provide alarm and notification features consistent with acceptable standards.</p>	<p>Replace the fire alarm system with a new, listed addressable fire alarm system in accordance with NFPA 72.</p>	<p>Design within 4 months, install within 9 months</p>
		<p>The existing break-box style manual fire alarm activation points are adequate, however certain components of the fire alarm system are antiquated.</p>		



F-18	Fire Protection	<p>The high-rise building has an occupied floor greater than 23m (75 ft) and is not provided with automatic sprinkler protection. The large occupant loads, heavy fuel loading, and anticipated extended egress times warrant sprinkler protection.</p> <p>The highest occupied floor appears to be over 75 ft.</p>	<p>Provide automatic sprinkler protection throughout the building in accordance with NFPA 13.</p>	<p>Design within 6 months, install within 12 months</p>
F-19	Fire Protection	<p>Inspection, testing, and maintenance records for the fire alarm system were not available.</p>	<p>Inspect, test and maintain the fire alarm system, and keep written records on-site, in accordance with NFPA 72.</p>	<p>Within 3 months</p>
F-20	Egress Lighting	<p>Based on the number and location of emergency lights observed, adequate illumination levels are not anticipated along egress routes in the basement.</p>	<p>Test the emergency lighting system on each floor and provide additional emergency fixtures to provide adequate illumination along the means of egress. Provide a minimum illumination of 10 lux at the floor level within exit stairs and exit discharge paths and minimum 2.5 lux along exit access aisles.</p>	<p>Within 3 months</p>