

RGR Sweater Ltd (Extention-02)

Madhokala, Sreepur, Gazipur 1740

(24.181467, 90.434908)

17 April 2025

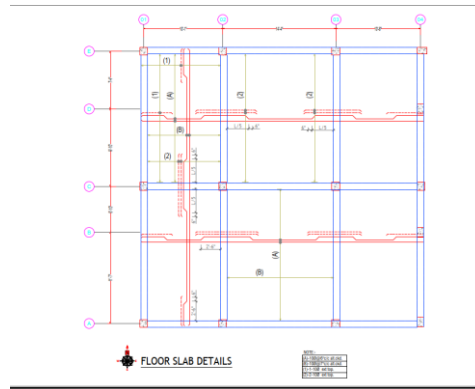


1. Building Information

1. Yarn Distribution Counter part-1
2. Yarn Distribution Counter Part-2
3. Jute Store Shed
4. Jute Wastage Shed
5. Staff/Workers dining & kitchen Shed
6. Fire pump room, Green Corner Shed
7. Sweet Shop Shed
8. Linking Building
9. ETP Building
10. New Generator Shed
11. Canopy 1
12. Canopy 2

2. Observation:

Observation 01: Lack of information in drawings. (Yarn Distribution Counter part-1,)



Description: Slab thickness was not found in the provided as-built drawings. Building engineer is required to revise the drawings with complete structural details and submit to RSC.

Observation 02: Trolley impact on columns. (Yarn Distribution Counter part-1, 2)



Description: Column surfaces were damaged due to trolley movement. Building engineer is required to provide guard to protect columns from trolley impact.

Observation 03: Improper connection of truss. (Canopy-1)



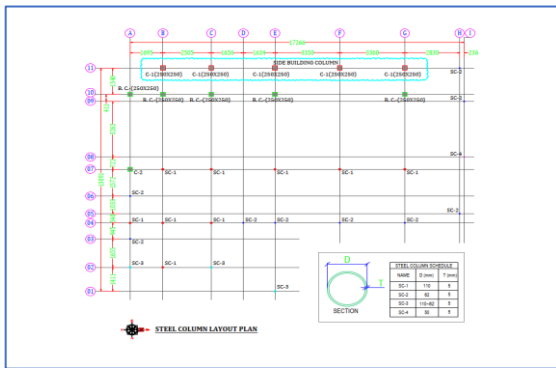
Description: Improper connection between truss and steel column was found. Building engineer is required to check the connection adequacy as part of a safety check report and submit to RSC.

Observation 07: Improper connection between angle and pipe column. (Wastage Store Shed)



Description: Improper connection between angle and pipe column was found in several locations. Building engineer is required to check the connection adequacy as part of safety check report and submit to RSC.

Observation 08: Incomplete as-built drawings. (Staff/Workers dining & kitchen Shed)



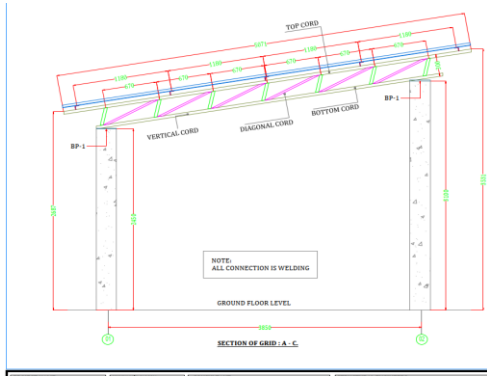
Description: Full area of the shed was not covered in the structural drawings. Also, connection details were not found in drawings. The building engineer is required to revise the as-built drawings and submit to RSC.

Observation 09: Improper connection between truss and pipe column (Staff/Workers dining & kitchen Shed)



Description: Improper connection between angle and pipe column was found in several locations. Building engineer is required to check the connection adequacy as part of engineering assessment and submit to RSC.

Observation 10: Mismatch in as-built drawings. (Fire pump room)



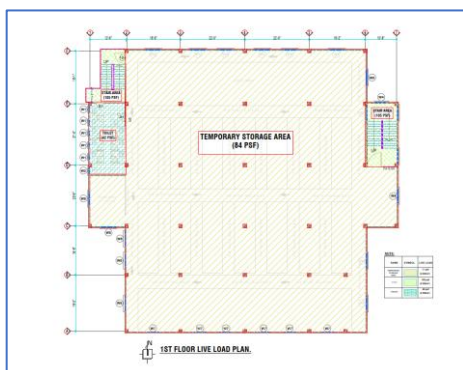
Description: All sectional and connection details were not found in drawings. The building engineer is required to revise the as-built drawings and submit to RSC.

Observation 11: Improper connection between truss and RC column. (Fire Pump Room)



Description: Improper connection between angle and pipe column was found in several locations. Building engineer is required to check the connection adequacy as part of safety check report and submit to RSC.

Observation 12: Load plan and design report does not comply with BNBC. (Linking Building)



Eligibility for considering the structure as Ordinary Moment Resisting Frame (OMRF) of Main Production Building.

Serial No.	Strength		Material
01	Compressive strength of Concrete Column	3,500 Psi	Stone
02	Compressive strength of concrete Beam & Slab	3,000 Psi	Brick

Serial No.	Strength (psi)	
01	Yield strength of deformed MS bars, f_y (psi)	60,000

Note: Cylinder Test & Rebar test has been attached at the end of this report

Description: In storage areas floor loading was consider 84 psf which is not comply with BNBC 2020. Also, concrete material strength was considered 3500 psi but sufficient test report was not found. Building engineer is required to update the floor load plan along with design report and submit to RSC.

Observation 13: Lack of drawings for adjacent Steel stair and Fire Control Room. (Linking Building)



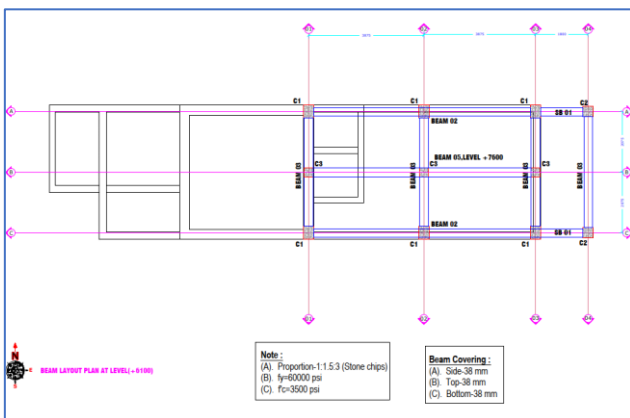
Description: As-built drawings were not found for adjacent external steel stair and Fire Control Room. The building engineer is required to prepare a full set of as-built drawings and submit to RSC.

Observation 14: Water clogging on roof. (Linking Building)



Description: Stagnant water on the roof was found during the inspection. The roof was constructed by MCAC. Building engineer is required to provide water proofing layers and improve drainage system.

Observation 15: Lack of information in as built drawings. (ETP Building)



Description: Beam layout do not fully match with the as-built conditions. Also, no details were found for the steel portion stair. The building engineer is required to prepare a full set of as-built drawings and submit to RSC.

Observation 16: Lack of design report. (ETP Building)



Description: As per BNBC, every building or structure designed shall have its design documents prepared following the provision of Section 1.9.1. The design document shall include a design report and a structural drawing. At the time of inspection, no design reports were available which are required to be prepared in compliance with section 1.9.1.1 and section 1.9.1.2 (part 6, BNBC).

3. Action Plan:

Item No	Observation	Action Plan	Timeline
1.	Lack of information in drawings. (Yarn Distribution Counter part-1)	Building engineer is required to revise the drawings with complete structural details and submit to RSC.	within 6 weeks
2.	Trolley impact on columns. (Yarn Distribution Counter part-1, 2)	Building engineer is required to provide guard to protect columns from trolley impact.	within 6 weeks
3.	Improper connection of truss. (Canopy-1)	Building engineer is required to check the connection adequacy as part of safety check report and submit to RSC.	within 6 weeks
4.	Improper connection of truss. (Canopy-1)	Carry out remedial work if required.	within 6 months
5.	Mismatch in as-built drawings. (Yarn Distribution Counter part-2)	The building engineer is required to revise the as-built drawings and submit to RSC.	within 6 weeks
6.	Improper connection between truss and walls. (Yarn Distribution Counter part-2)	Building engineer is required to check the connection adequacy as part of engineering assessment and submit to RSC.	within 6 weeks
7.	Improper connection between truss and walls. (Yarn Distribution Counter part-2)	Carry out remedial work if required.	within 6 months
8.	Mismatch in as-built drawings. (Wastage Store Shed)	The building engineer is required to revise the as-built drawings and submit to RSC.	within 6 weeks
9.	Improper connection between angle and pipe column. (Wastage Store Shed)	Building engineer is required to check the connection adequacy as part of safety check report and submit to RSC.	within 6 weeks
10.	Improper connection between angle and pipe column. (Wastage Store Shed)	Carry out remedial work if required.	within 6 months
11.	Incomplete as-built drawings. (Staff/Workers dining & kitchen Shed)	The building engineer is required to revise the as-built drawings and submit to RSC.	within 6 weeks
12.	Improper connection between truss and pipe column (Staff/Workers dining & kitchen Shed)	Building engineer is required to check the connection adequacy as part of engineering assessment and submit to RSC.	within 6 weeks
13.	Improper connection between truss and pipe column (Staff/Workers dining & kitchen Shed)	Carry out remedial work if required.	within 6 months
14.	Mismatch in as-built drawings. (Fire pump room)	The building engineer is required to revise the as-built drawings and submit to RSC.	within 6 weeks

15.	Improper connection between truss and RC column. (Fire Pump Room)	Building engineer is required to check the connection adequacy as part of safety check report and submit to RSC.	within 6 weeks
16.	Improper connection between truss and RC column. (Fire Pump Room)	Carry out remedial work if required.	within 6 months
17.	Load plan and design report does not comply with BNBC. (Linking Building)	Building engineer is required to update the floor load plan along with design report and submit to RSC.	within 6 weeks
18.	Load plan and design report does not comply with BNBC. (Linking Building)	Verify in-situ test from each class of concrete.	within 6 weeks
19.	Load plan and design report does not comply with BNBC. (Linking Building)	Carry out remedial work if required.	within 6 months
20.	Load plan and design report does not comply with BNBC. (Linking Building)	Implement floor load plan.	within 6 months
21.	Lack of drawings for adjacent Steel stair and Fire Control Room. (Linking Building)	The building engineer is required to prepare a full set of as-built drawings and submit to RSC.	within 6 weeks
22.	Water clogging on roof. (Linking Building)	Building engineer is required to provide water proofing layers and improve drainage system.	within 6 months
23.	Lack of information in as built drawings. (ETP Building)	The building engineer is required to prepare a full set of as-built drawings and submit to RSC.	within 6 weeks
24.	Lack of design report. (ETP Building)	Prepare design report for the structure as per section 1.9.1 of BNBC.	within 6 weeks
25.	Lack of design report. (ETP Building)	Implement the recommendations of the design report.	within 6 months