

FIRE SAFETY INSPECTION REPORT

DELUXE FASHIONS LTD.

178/179 BAIZID, BOSTAMI ROAD, P. S. BAIZID

**OTHER FACTORIES: CLIFTON APPARELS LTD. AND
CLIFTON TEXTILES & APPARELS LTD.**



ACC  **RD**
on Fire and Building Safety in Bangladesh

June 5, 2014

SUMMARY

Deluxe Fashions Ltd. was surveyed for fire safety on 6/5/2014 by Hughes Associates, Inc. This summary identifies the major deficiencies that were identified during the inspection.

The purpose of this survey was to identify significant fire safety issues and to provide recommendations for remediation based on applicable standards specified by the Accord. The scope of this initial fire safety inspection was limited to the review and identification of major fire safety issues. The inspection did not include identification of minor deficiencies, which will be further addressed as part of follow-up inspections.

Table 1 summarizes the major fire safety issues identified during the inspection. Recommendations have been provided to address each issue.

An implementation schedule shall be developed by the factory to remediate each of the findings. The specific timing of improvements, including any requested extensions due to design / installation constraints, shall be submitted to the Accord for approval.

Table 1. Findings And Recommendations

No.	Category	Finding	Recommendation	Remediation Timeframe
F-1	Fire Rated Construction	The boiler, generator, and transformer room is not separated by fire-rated construction that is openings, non-rated doors, penetrations on ground floor.	Separate the boiler, generator, and transformer room by a minimum 2-hr fire-rated construction. Seal and/or protected all openings to maintain the required fire separations	Within 3 months



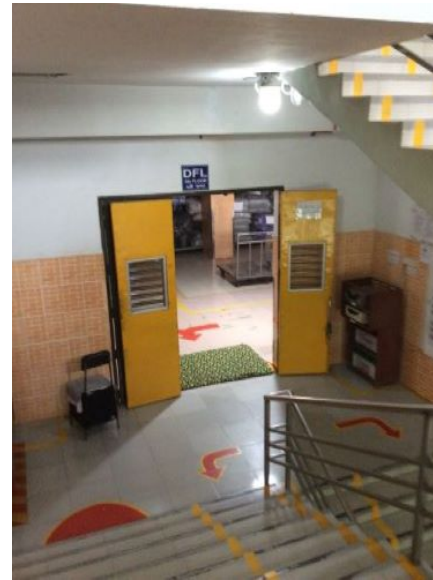


F-2	Fire Rated Construction	Areas used for combustible storage are not separated by fire-rated construction on ground, 1st, 2nd, 3rd, 4th and 5th floors .	Provide dedicated storage rooms separated by minimum 1-hr fire-rated construction.	Within 3 months
-----	-------------------------	--	--	-----------------





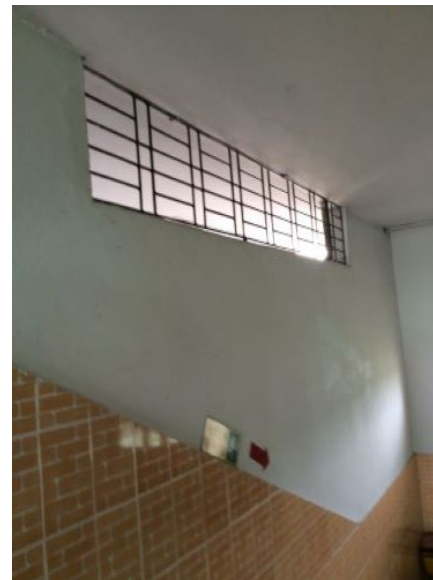
F-3	Fire Rated Construction	The exit stairs are not separated from work areas, and other spaces on each floor by fire-rated construction in the north exit stair on all floors.	Provide minimum 1.5-hr fire rated doors and seal all unprotected openings to separate the exit stairs from work areas and other building spaces on all floor levels. Ensure that the fire doors are self-closing and positive latching and that they are provided with fire exit (panic) hardware where serving production floors.	Within 3 months
			If fire doors are required to be held open for functional reasons, provide automatic-closing devices tied to the fire alarm system.	



F-4	Fire Rated Construction	Unsealed penetrations and openings are located in the fire-rated floor/ceiling assemblies.	Provide a minimum 2-hr fire-rated shaft to separate the utility risers from each floor level.	Within 3 months
			Seal all penetrations and openings in floor/ceiling assemblies to maintain the fire separation.	



F-5	Fire Rated Construction	Unsealed penetrations and openings are located in exit stair enclosures.	Seal all penetrations and openings in exit stair enclosure walls to maintain the fire separation.	Within 3 months
-----	-------------------------	--	---	-----------------



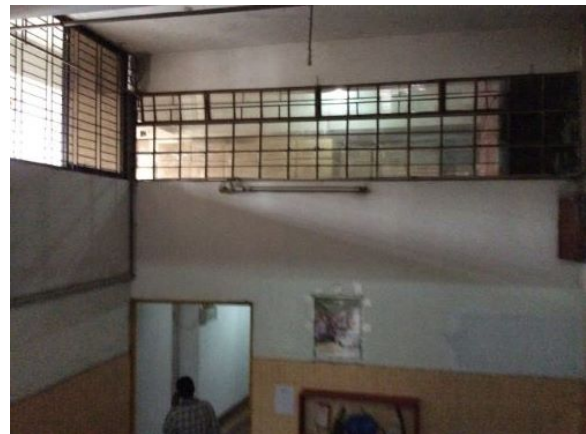
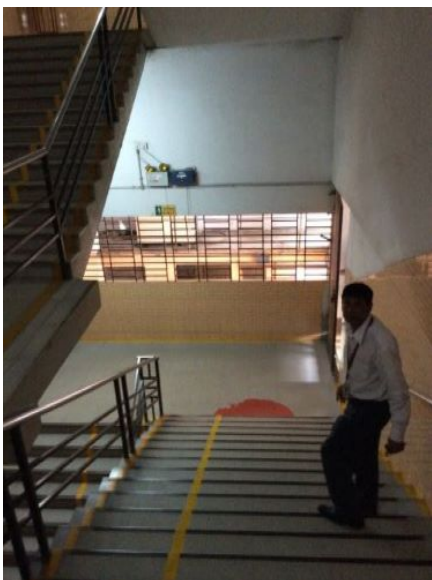


F-6	Fire Rated Construction	Areas used for combustible storage are not separated by fire-rated construction on ground, 1st, 2nd, 3rd, 4th and 5th floors .	Provide dedicated storage rooms separated by minimum 1-hr fire-rated construction.	Within 3 months
-----	-------------------------	--	--	-----------------



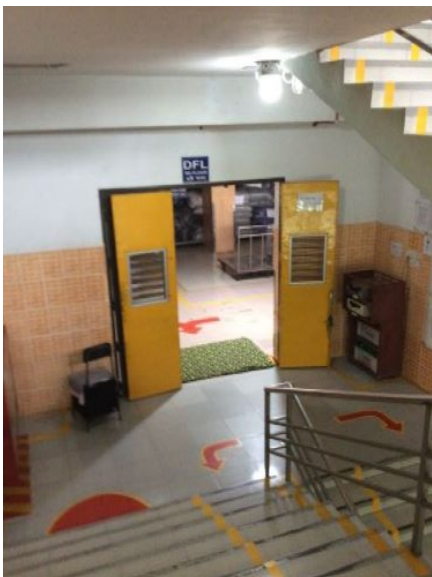


F-7	Fire Rated Construction	Unsealed penetrations and openings are located in exit stair enclosures.	Seal all penetrations and openings in exit stair enclosure walls to maintain the fire separation.	Within 3 months
-----	-------------------------	--	---	-----------------



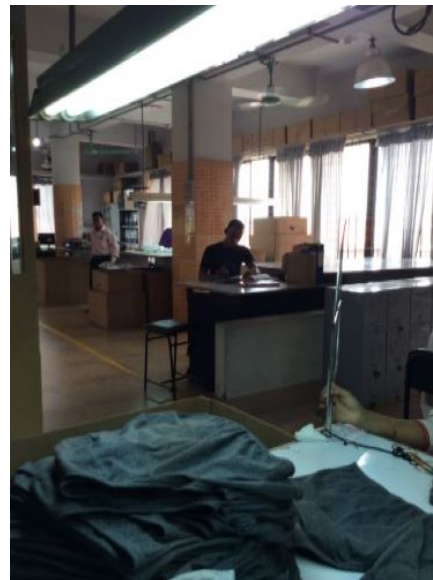


F-8	Egress	Egress doors / gates with locking features are provided at building exits, exit stairs, along egress routes, exit discharge in the north exit stairs on all floors. All gates/doors are open and unlocked during inspection.	Remove locking features from all egress doors / gates. If locks are required for security reasons, utilize special door locking features complying with NFPA 101.	Immediate
-----	--------	--	--	-----------





F-9	Egress	Storage was located in the egress path on 1st, 2nd, 3rd, 4th and 5th floors.	Keep egress paths and stairs clear of storage.	Immediate
-----	--------	--	--	-----------





F-10 Egress

Storage was located in the north exit stair on ground and first floor.

Remove all storage from exit stairs and egress paths.

Immediate





F-11	Egress	A single means of egress is provided from basement.	Provide additional means of egress.	Within 3 months
F-12	Egress	The exits are not remotely located from each other such that a single fire event could compromise both exits on the basement.	Provide additional exits.	Within 6 months
F-13	Fire Protection	Inspection, testing, and maintenance for the fire alarm system is not in accordance with NFPA 72.	Inspect, test and maintain the fire alarm system, and keep written records on-site, in accordance with NFPA 72.	Within 3 months

F-14	Fire Protection	The fire alarm system does not appear to provide adequate audible notification coverage on ground floor and basement. Functional test was conducted.	Provide additional notification appliances such that the fire alarm system is audible throughout the building in accordance with NFPA 72.	Within 6 months
F-15	Egress Lighting	Emergency lighting is not connected to normal circuit for electric power supply .	Regularly test the emergency lighting system on each floor and replace/repair lights as needed.	Within 1 month
F-16	Egress Lighting	Inspection, testing, and maintenance for the emergency lighting system is not in accordance with ACCORD standard.	Inspect, test and maintain the emergency lighting system in accordance with The ACCORD standard. Keep written records on-site.	Within 3 months
F-17	Egress Lighting	Based on the number and location of emergency lights observed, adequate illumination levels are not anticipated along egress routes.	Test the emergency lighting system on each floor and provide additional emergency fixtures to provide adequate illumination along the means of egress. Provide a minimum illumination of 10 lux at the floor level within exit stairs and exit discharge paths and minimum 2.5 lux along exit access aisles.	Within 3 months