

INITIAL FIRE SAFETY INSPECTION REPORT

Sakura Dyeing & Garments Ltd. (Extension)

RSC ID: 26035

Latitude: 23.6436191, Longitude: 90.4955037

Address: Kutubail, fatullah, Narayangonj

Other Factories: Sakura Dyeing & Garments Ltd. - 9876



Inspected By: Mohammad Anayet Hossain

Date: 16-Mar-2025

Fire Safety Inspection Report

Sakura Dyeing & Garments Ltd. (Extension)(ID-26035)

Introduction:

Sakura Dyeing & Garments Ltd. (Extension) complex was surveyed for fire safety on **16-Mar-2025** by The RSC Inspection Team. The purpose of the survey was to identify significant fire safety issues and to provide recommendations for remediation based on applicable standards specified by the RSC. The scope of this initial fire safety inspection was limited to the review and identification of major fire safety issues. The inspection did not include identification of minor deficiencies, which will be further addressed as part of follow-up inspections.

Limitations

The information in this fire safety inspection report was obtained during a visit to the facility and during interviews with local factory management. It has not been possible to provide independent verification for all the information and data collected, and, therefore, The RSC cannot accept general responsibility for omissions or errors arising from inaccuracies in this report from the information obtained.

The findings and recommendations in this report are not intended to imply, guarantee, ensure or warrant compliance with any government regulations. Additionally, the results do not imply in any way that compliance with the findings or recommendations as stated in this report will eliminate all hazards, risks or exposures or that hazards, risks or exposures not referred to in this report do not exist. Compliance with the findings and recommendations stated in this report does not relieve the factory owner from obligation to comply with specific project requirements, industry standards, or the provisions of any local government regulations.

General Factory Information

There are one (01) structure covered under this RSC ID 26035. The structure is ancillary (Warehouse building). The building is as below:

SL No	Building Name	Building Construction Period	Approval Date & Authority	Occupied	Structure type	Construction Category
1	New Warehouse Building	Mar-2024 to Dec-2024	Not available during inspection	Jan-2025	3-Storeyed (G+2) RCC Building with partial basement	New

Factory Address: Kutubail, fatullah, Narayangonj.

Points of contact:


Name: Md. Ashraful Alam
Designation: Sr. Manager- HR, Admin & Compliance
Phone No.: 01324256201
Mail: compliance@sakurasb.com

Name: Mr.Bhaskar Saha (Robin)
Designation: GM
Phone No.: 01324256200
Mail: robin@sakurasb.com

Findings & Recommendations :


Table-1 summarizes the major fire safety issues identified during the inspection. Recommendations have been provided to address each issue. An implementation schedule shall be developed by the factory to remediate each of the findings. The specific timing of improvements, including any requested extensions due to design / installation constraints, shall be submitted to the RSC for review.

Table-1: New Warehouse Building.

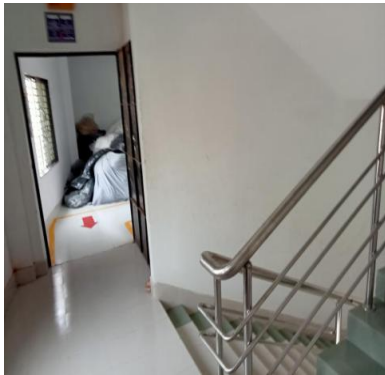
SI No.	Category	Findings	Required Action	Remediation Time Frame
F-01	Fire Rated Construction	<p>Rooms used for storage of combustible materials are not separated from the surrounding occupancy/areas.</p> <p>Location: New Warehouse Building (All floors).</p>	<p>Rooms used for storage of combustible materials shall be separated from the surrounding occupancy with a minimum 1 hour construction in accordance with section 3.4.2.1.5 of RSC Technical Guideline (Standard).</p>	Within 3 months
				

F-02	Fire Rated Construction	<p>The fire pump room is not provided with adequate fire separation.</p> <p>Location: New Warehouse Building (Ground floor).</p>	<p>Provide fire pump room with 2 hr. rated fire separation when not sprinklered and 1 hr. rated fire separation when provided with automatic sprinklers in accordance with NFPA 20. Or, Physically separate the pump room from the protected building by a minimum of 50 ft. (15.3 m) in accordance with NFPA 20</p>	Within 3 months
------	-------------------------	----------------------------------------------------------------------------------------------------------------------------------	----------------------------------------------------------------------------------------------------------------------------------------------------------------------------------------------------------------------------------------------------------------------------------------------------------------------	-----------------



F-03	Fire Rated Construction	<p>The exterior walls do not have the required fire resistance and opening protection based on the building's fire separation distance.</p> <p>Location: New Warehouse Building.</p>	<p>The exterior walls shall have a fire resistance and opening protection as specified in BNBC 2020 Part 3 Table 3.2.2 & 3.2.3 and BNBC 2020 Part 3 Section 2.4.1.3.</p>	Within 6 months
				

F-04	Means of Egress	<p>The exit stair enclosures are not separated from work areas and other spaces on each floor by fire-rated construction.</p> <p>Location: New Warehouse Building.</p>	<p>The exit stair enclosure shall be provided with a minimum 1-hr fire resistance rating for buildings with 3 or fewer stories and a minimum of 2- hr. fire resistance rating for buildings 4 or more stories. Provide 0.75 hr. fire rated door and seal all penetrations and openings by 1 hr. fire rated fire rated barrier construction for building with 3 or fewer stories. Provide 1.5 hr. fire rated door and seal all penetrations and openings by 2 hr. fire rated fire rated barrier construction for building with 4 or more stories.</p> <p>Provide a fire-resistive rated assembly between the exterior exit stairs and the building up to 10 ft. beyond the end of the stair to achieve the required separation. The rated assembly shall be approved and/or designed by a qualified fire protection engineer.</p> <p>Ensure that the fire doors are self-closing and positive latching and that they are provided with fire exit (panic) hardware where serving production floors. If fire doors are required to be held open for functional reasons, provide automatic closing devices tied to the fire alarm system.</p>	Within 3 months
------	-----------------	------------------------------------------------------------------------------------------------------------------------------------------------------------------------	-------------------------------------------------------------------------------------------------------------------------------------------------------------------------------------------------------------------------------------------------------------------------------------------------------------------------------------------------------------------------------------------------------------------------------------------------------------------------------------------------------------------------------------------------------------------------------------------------------------------------------------------------------------------------------------------------------------------------------------------------------------------------------------------------------------------------------------------------------------------------------------------------------------------------------------------------------------------------------------------------------------------------------------------------------------------------------------------------------------------------------------------	-----------------




F-05	Means of Egress	<p>Storage areas discharges directly into the exit stair enclosure.</p> <p>Location: New Warehouse Building (Ground floor- South-West Stair (Stair-1) and 1st & 2nd floors (Both Stairs)).</p>	<p>Openings from exit enclosure to Storage areas/ basements/ transformer rooms/ generator rooms/ boiler rooms and similar normally unoccupied spaces shall be provided with a vestibule with fire rated construction and openings in accordance with section 6.14.3 of RSC Technical Guidelines (Standard)¹ V1.0.</p> <p>Provide a 1.5 hr. fire rated door on the exit stair side and a 1-hr. fire rated door on the Store, generator, sub-station room side. Ensure that the fire rating of the vestibule construction matches that of the exit stair enclosure as per RSC Technical Guidelines (Standard)¹ V1.0. section 6.14.3. The minimum width for vestibules shall not be less than 1.1m and length 1.8m.</p>	Within 3 months
------	-----------------	----------------------------------------------------------------------------------------------------------------------------------------------------------------------------------------------------	--------------------------------------------------------------------------------------------------------------------------------------------------------------------------------------------------------------------------------------------------------------------------------------------------------------------------------------------------------------------------------------------------------------------------------------------------------------------------------------------------------------------------------------------------------------------------------------------------------------------------------------------------------------------------------------------------------------------------------------------	-----------------



F-06	Means of Egress	<p>The exterior exit stair (Stair-2, 1st floor to ground floor) is not separated from the building.</p> <p>Location: New Warehouse Building (Ground floor- North-West Stair (Stair-2)).</p>	<p>1. Where nonrated walls or unprotected openings enclose the exterior of the stairway and the walls or openings are exposed by other parts of the building at an angle of less than 180 degrees (3.14 rad), the building exterior walls within 3050 mm (10 ft) horizontally of a nonrated wall or unprotected opening shall have a fire-resistance rating of not less than 1 hr./ 2 hr. in accordance with section 6.3.1.3 of RSC Technical Guidelines (Standard)¹ V1.0.</p> <p>If fire doors are required to be held open for functional reasons, provide automatic-closing devices tied to the fire alarm system.</p>	Within 3 months
------	-----------------	---------------------------------------------------------------------------------------------------------------------------------------------------------------------------------------------	--------------------------------------------------------------------------------------------------------------------------------------------------------------------------------------------------------------------------------------------------------------------------------------------------------------------------------------------------------------------------------------------------------------------------------------------------------------------------------------------------------------------------------------------------------------------------------------------------------------------------------------	-----------------



F-07	Means of Egress	<p>The exit discharge path serving from north-west exit stair (Stair-2) is less than 10 ft wide and is not separated from the building interior which is not in accordance with section 6.17.2 of RSC Technical Guidelines (Standard)¹ V1.0.</p> <p>Location: New Warehouse Building (Ground floor- North-West Stair (Stair-2)).</p>	<p>Egress courts/discharge path less than 3050 mm (10 ft) in width (as measured from the building and the adjacent property line) shall be provided with walls having a 1-hr fire resistance rated construction for a distance of 3050 mm (10 ft) above the floor of the court.</p> <p>Seal all penetrations and openings to the interior of the building along the discharge path, up to a height of 10 ft. to provide a minimum 1-hr fire separation.</p>	Within 3 months
				
F-08	Means of Egress	<p>Exit sign not provided at all exit.</p> <p>Location: New Warehouse Building.</p>	<p>Lighted exit signs shall be placed at entrance to an exit. Additional directional exit signs shall be placed throughout the facility anywhere the continuation of the egress is not obvious.</p> <p>Lighted exit signs shall be provided with either battery backup or uninterruptable power supply systems and shall be continuously illuminated at all times. Exit Sign shall provide in accordance with RSC Technical Guidelines (Standard)¹ V1.0 Section 6.11.</p>	Within 1 month

F-09	Means of Egress	Building does not have stair/floor level designation signs at required locations on all floors. Location: New Warehouse Building.	Provide stair designation sign at each floor entrance from the stair to the floor in English and Bengali. Signs shall indicate the name of the stair and the floor level. Signs shall be posted adjacent to the door in accordance with RSC Technical Guidelines (Standard) ¹ V1.0 Section 6.9.3.	Within 1 month
F-10	Means of Egress	Updated Fire evacuation map is not posted and updated at the entrance of all exit stair. Location: New Warehouse Building.	Update the fire evacuation map and shall be posted at the entrance to each exit stair in accordance with RSC Technical Guidelines (Standard) ¹ V1.0 Section 13.3.	Within 1 month
F-11	Means of Egress	Building does not have occupant load signs at required locations on all floors. Location: New Warehouse Building.	Post the occupant load for every assembly and production floor in a facility in a conspicuous space near the main exit or exit access doorway for the space in accordance with RSC Technical Guidelines (Standard) ¹ V1.0 Section 6.4.4.	Within 1 month
F-12	Means of Egress	The required no smoking signs are not present in the factory. Location: New Warehouse Building.	Smoking is prohibited in any garment factory building or separate storage building. Signs shall be posted in Bengali and English at all building entrances. If the factory creates a designated smoking area outside the building, information of these areas will be posted on the signs. Smoking sign shall post in accordance with section 13.5 of RSC Technical Guideline (Standard)	Within 1 month

F-13	Means of Egress	<p>Directional signs are not provided where direction of the path of travel to an exit has changed.</p> <p>Location: New Warehouse Building.</p>	<p>Illuminated directional signs shall be provided where there is a change in the direction for the path of travel and the direction to an exit is not obvious in accordance with RSC Technical Guidelines (Standard)¹ V1.0 Section 6.11.3.</p>	<p>Within 1 month</p>
F-14	Means of Egress	<p>Based on the number and location of emergency lights observed, adequate illumination levels are not anticipated along egress routes.</p> <p>Location: New Warehouse Building.</p>	<p>Test the emergency lighting system on each floor and provide additional emergency fixtures to provide adequate illumination along the means of egress. Provide a minimum illumination of 10 lux at the floor level within exit stairs and exit discharge paths and minimum 2.5 lux along exit access aisles. Illumination on means of egress shall meet in accordance with RSC Technical Guidelines (Standard)¹ V1.0 Section 10.12.2.</p>	<p>Within 3 months</p>

F-15	Inspection, Testing & Maintenance (Fire)	<p>Inspection, testing, and maintenance for the exit sign and emergency lighting system were not in accordance with the RSC Technical Guidelines (Standard).</p> <p>Location: New Warehouse Building.</p>	<p>Inspect, test and maintain the exit sign and emergency lighting system in the accordance with The RSC Technical Guidelines (Standard) and keep written records on-site.</p>	<p>Within 1 month</p>
F-16	Fire Alarm & Detection System (FADS)	<p>The factory doesn't have an addressable listed Fire Alarm & Detection system.</p> <p>Location: New Warehouse Building.</p>	<p>Provide a new, listed addressable fire alarm system in accordance with NFPA 72 to meet section 5.7.3 of RSC Technical Guideline (Standard)</p> <p>Submit the proposed fire alarm system design to RSC for review. Once the design is reviewed, install and modify the fire detection and alarm system throughout the building in accordance with review comment, RSC/ RSC Technical Guidelines (Standard) and NFPA 72. After installation the owner shall conduct internal testing and commissioning and then contact the RSC for witness of final acceptance testing.</p>	<p>Design Review within 2 months and installation within 4 months.</p>
F-17	Inspection, Testing & Maintenance (Fire)	<p>Inspection, testing and maintenance for the fire alarm system is not in accordance with NFPA 72 and The RSC Technical Guidelines (Standard).</p> <p>Location: New Warehouse Building.</p>	<p>Inspect, test and maintain the fire alarm system and keep written records on-site, in accordance with NFPA 72 and The RSC Technical Guidelines (Standard) and keep written records on-site.</p>	<p>Within 1 month (after installation)</p>

F-18	Inspection, Testing & Maintenance (Fire)	<p>Inspection, testing and maintenance of portable fire extinguishers is not in accordance with NFPA 10.</p> <p>Location: New Warehouse Building.</p>	<p>Inspect, test and maintain the portable fire extinguishers and keep written records onsite, in accordance with NFPA 10 and RSC Technical Guidelines (Standard).</p>	<p>Within 1 month</p>
------	------------------------------------------	-------------------------------------------------------------------------------------------------------------------------------------------------------	------------------------------------------------------------------------------------------------------------------------------------------------------------------------	-----------------------