

Topaz Dresses Ltd.

Singerdighi, Mawna, Sreepur, Gazipur
(24.2292789 N, 90.3679179 E)

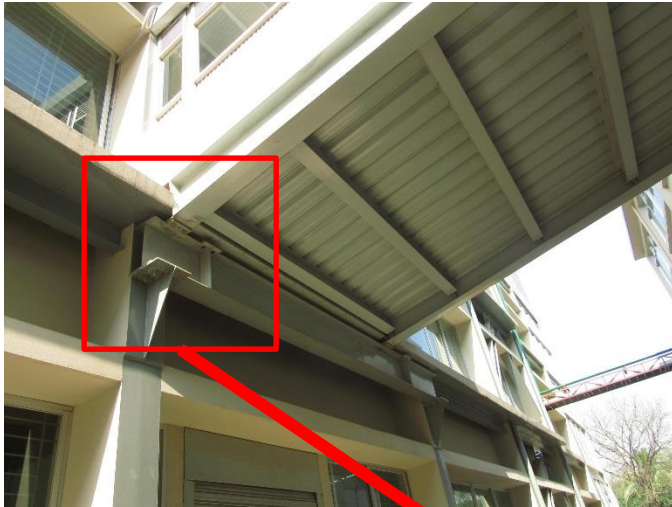
29th November 2015



Observations

1-Factory Building

Connection detailing at Building 1 to Building 2 passageway



Connection detailing at Building 1 to Building 2 passageway appears to be weak.



Water accumulation and leaking with potential to cause corrosion and lasting damage to structure.



Water accumulation on roof slab

2- Warehouse Building



Flat slab without drop panels

Cursory calculations indicate that flat slab stresses may become critical if heavily loaded.

Verify insitu concrete strength and aggregate type to ensure flat slab punching shear strength is adequate.

Priority Actions

Problems Observed

Building 1- Main Factory Building

ITEM 1: Connection detailing at Building 1 to Building 2 passageway

ITEM 2: Water leakage at roof level may cause deterioration of structure

Building 2- Warehouse building

ITEM 1: Punching stress level of flat slabs without drop panels

Building 1

Item No.	Observation	Recommended Action Plan	Recommended Timeline
1	Connection detailing at Building 1 to Building 2 passageway appears to be weak	Building engineer to inspect connection detailing at either side of the the passageway. Provide adequate joint detailing where required.	6-months
2	Water accumulation and leaking with potential to cause corrosion and lasting damage to structure.	Repair leaks in water tanks.	6-months

Building 2

Item No.	Observation	Recommended Action Plan	Recommended Timeline
3	Punching stress level of flat slabs without drop panels	Building engineer to review design, loads and slab punching shear stresses at flat slabs.	6-months
4	Punching stress level of flat slabs without drop panels	Verify insitu concrete stresses either by 100mm dia. cores or existing cylinder strength data.	6-months
5	Punching stress level of flat slabs without drop panels	Building Engineer to create controlled loading plans for all floors.	6-months