

ASWAD COMPOSITE MILLS LTD. (U-2) (EXTENSION)

Kabirpur, Ashulia, Savar
(24.010700, 90.247947)

5 December 2024



1. Building Information

1. **Single-Storeyed Prefabricated Shed:** This is a single-storeyed steel shed.
2. **Boiler Room:** This is a single-storeyed RC building.
3. **Rainwater Harvesting Plant:** This is a single-storeyed RC building with an underground reservoir.
4. **Wastage Shed:** This is a single-story steel shed.
5. **Fire Pump Room:** This is a single-storeyed RC building.

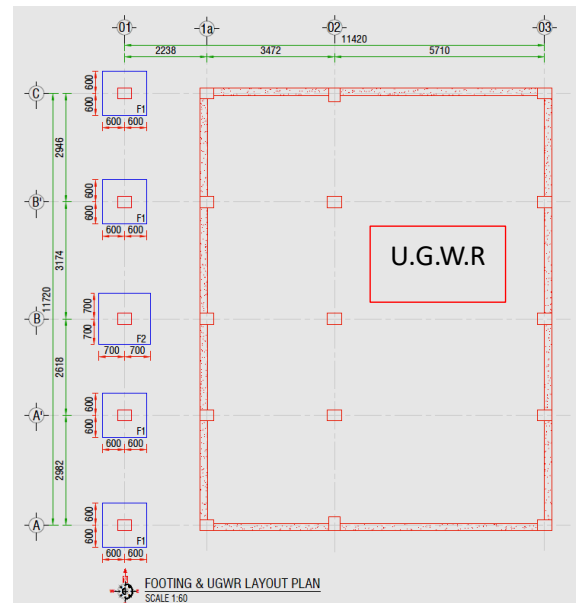
2. Observations

Observation-1: Lack of information in design documents. (Single-Storeyed Prefabricated Shed)



Description: A DEA report was available for the shed. The connection adequacy of structural members (Column-rafter, rafter-rafter etc.) was not incorporated in the report. The building engineer is required to check the connection adequacy of all types of connections and incorporate them in the design report. Submit revised design documents to the RSC for detailed review against lateral forces.

Observation-2: Lack of lateral stability. (Wastage Shed)



Description: Lateral load transfer media compression struts were missing along the long direction at the ridge/eave. So, the lateral stability system of the structure is incomplete. Also, the shed rests on the top slab of the underground water reservoir. However, no load plan was prepared for the suspended slab. The building engineer is required to prepare design documents (considering lateral stability) following section 1.9.1 (part-6, BNBC) and submit to the RSC for detailed review. Also, produce and actively manage a loading plan for suspended floor plate.

Observation-3: Disconnected wall bracing. (Wastage Shed)



Description: A disconnected wall bracing was found on the south side of the shed. The factory mentioned that it was disconnected for maintenance work. However, the building engineer is required to reinstall the disconnected bracing.

Observation-4: Falling Hazard. (Rainwater Harvesting Plant)



Description: Railing was not provided for the stair and elevated platform which may cause falling hazards. The factory is required to provide a railing to avoid possible falling hazards.

3. Action Plan

Serial No.	Observation	Action Plan	Timeline
1	Lack of information in design documents. (Single-Storeyed Prefabricated Shed)	The building engineer is required to check the connection adequacy of all types of connections and incorporate them in the design report. Submit revised design documents to the RSC for detailed review against lateral forces.	within 6 weeks
2		Carry out the suggested remedial works.	within 6 months
3	Lack of lateral stability. (Wastage Shed)	The building engineer is required to prepare design documents (considering lateral stability) following section 1.9.1 (part-6, BNBC) and submit to the RSC for detailed review.	within 6 weeks
4		Produce and actively manage a loading plan for the suspended floor plate.	within 6 weeks
5		Carry out the suggested remedial works.	within 6 months
6	Disconnected wall bracing. (Wastage Shed)	The building engineer is required to reinstall disconnected bracing.	within 6 weeks
7	Falling Hazard. (Rainwater Harvesting Plant)	The factory is required to provide a railing/barrier to avoid possible falling hazards.	within 6 weeks