

APS KNIT COMPOSITE LTD.

Kamargaon, Pubail Road, Gazipur Sadar, Gazipur
(23.928538 N, 90.445495 E)

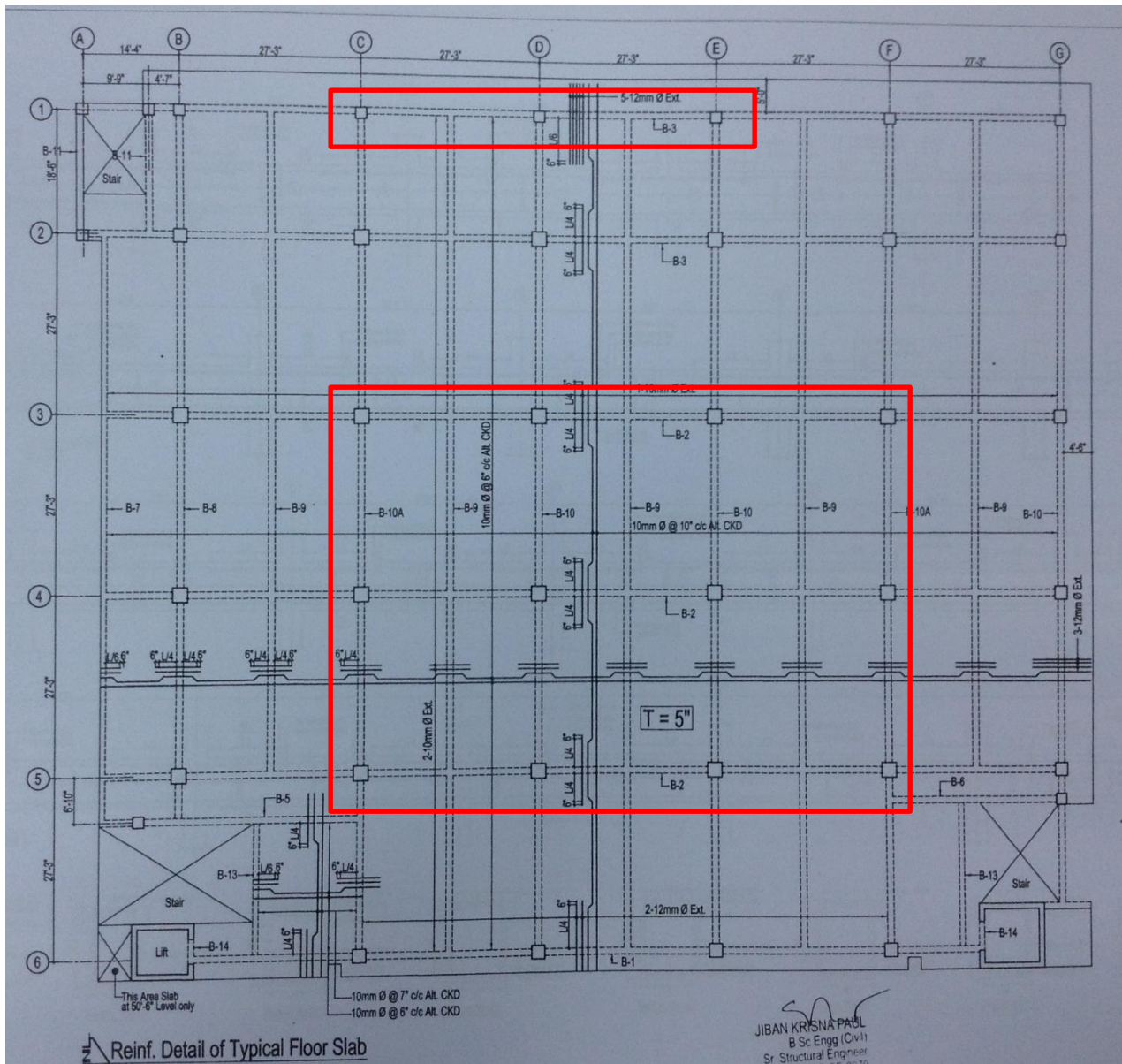
31st October 2015



Observations

Stress Level of Columns (In Case of 9-storey Building)

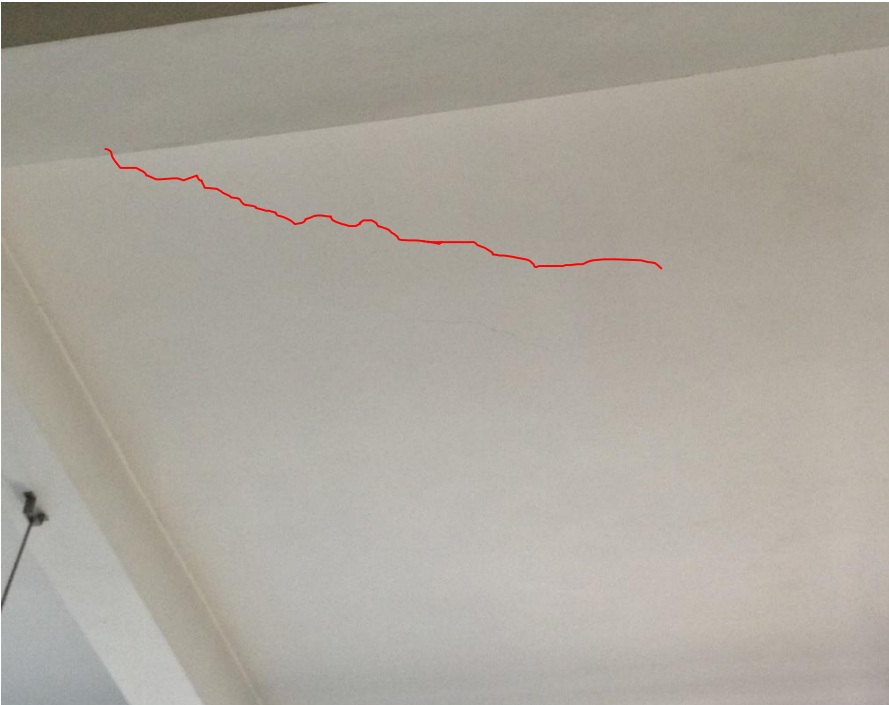
Observation



Columns at marked areas have high stress level in case of final state (9-storey)

Cracks at First Floor Slab

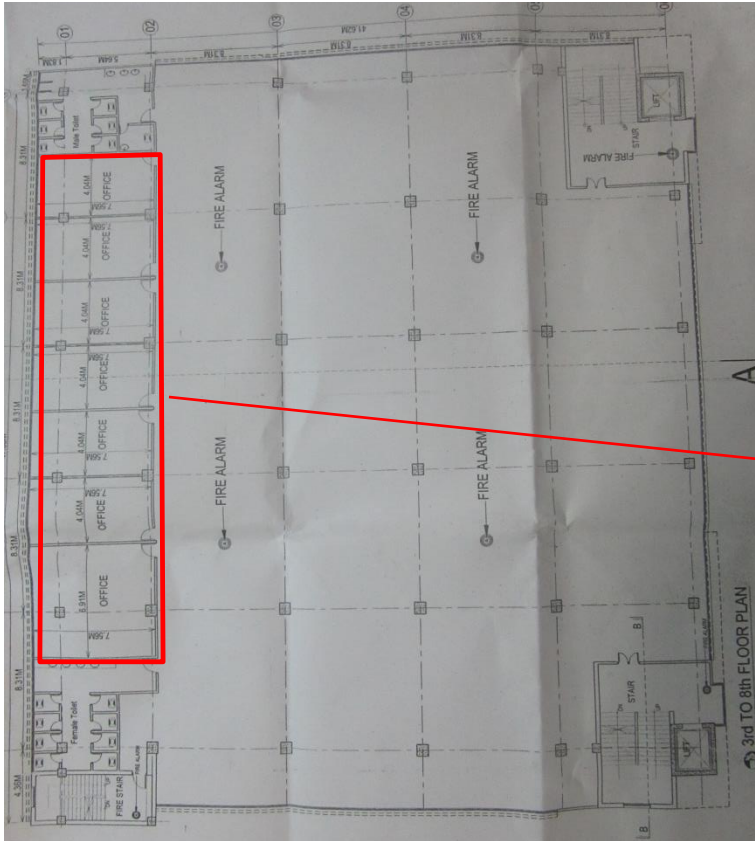
Observation



Hairline cracks observed at the bottom part of the first floor slab on which heavy loads are being applied due to stored materials.

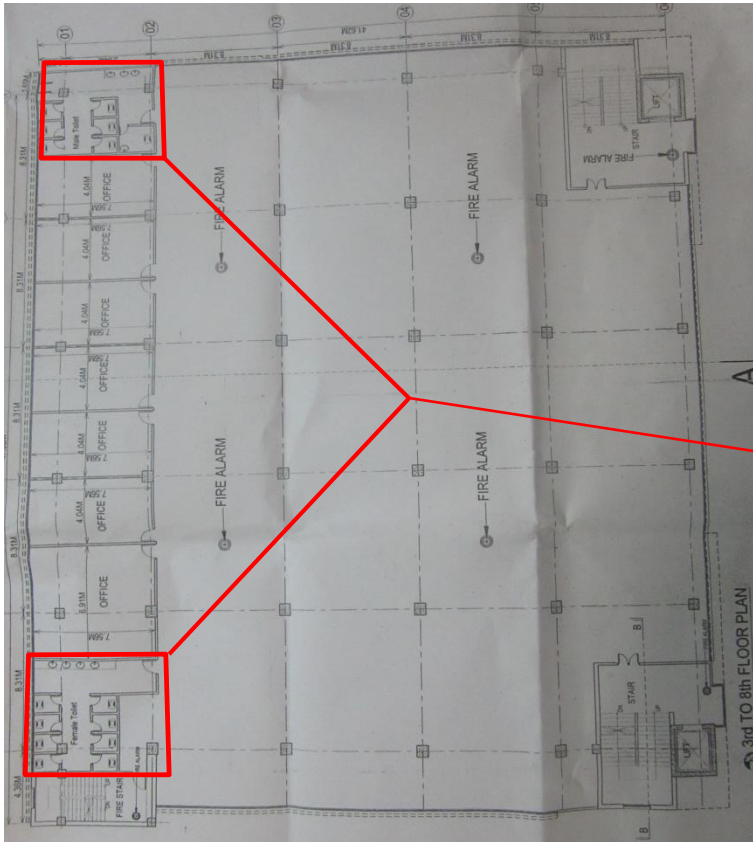
Discrepancies between Permit Drawings and Observations

Observation



Layout Permit Drawing

On 5th floor there was a large toilet area instead of office room on West end of building which was not present on permit drawing.



Layout Permit Drawing

On 1st to 4th floors at the West en of the building, there were bigger toilet areas of 11 cubicles instead of 8 cubicles shown on permit drawings.

Loading Plan for Storage Areas

Observation



No loading plan exists for storage areas. Materials are being stored in a disorganized way.

Disorganized materials stock at roof

Observation



Roof should be cleaned by disposal to ensure safety.

Other Observations

Observation



Steel Bars were exposed from the roof column and corrosion may take place in near future.



No Protection around column area at ground level.

Priority Actions

Problem Observed:

ITEM 1: Stress at Columns

ITEM 2: Cracks at First Floor Slab – Loading Plan

ITEM 3: Protective Measures for Ground Floor Columns

ITEM 4: Protective Measures for Exposed Rebars at Roof Level

Item No.	Observation	Recommended Action Plan	Recommended Timeline
1	Stress Level in Columns	At the current state of the building, stress level at columns is low however when the 9-storey building (final stage) was checked it was found to be high. Verification of concrete strength should be made by core sample tests before proceeding with the construction.	6-months
2	Stress Level in Columns	Make structural alterations if required as advised by Engineer.	6-months
3	Hairline Cracks at First Floor Slab	The First Floor is used as a storage area and cracks observed at the bottom face of the slab, most probably due to excessive loading. The cracks should be monitored and the loading should be limited with the advise of the Building Engineer.	6-weeks
4	Hairline Cracks at First Floor Slab	Loading plan should be prepared by the Building Engineer for the storage areas.	6-weeks
5	Hairline Cracks at First Floor Slab	Necessary structural alterations should be done based on the outcome of the investigations.	6-months

Item No.	Observation	Recommended Action Plan	Recommended Timeline
6	Protective Measures for Ground Floor Columns	Corner parts of the Ground Floor columns are generally damaged due to hits by the trolleys used for carrying materials. Corner protection should be provided for them.	6-weeks
7	Exposed Column Rebars at Roof Level	The exposed column rebars which will be used for future construction are corroded. Being informed that the construction works will not take place in the near future those exposed rebars should be protected from external effects.	6-weeks