

# INITIAL FIRE SAFETY INSPECTION REPORT

**Vintage Denim Ltd. (Extension)**

**RSC ID: 24601**

**Gilarchala, Sreepur, Gazipur**

**24.192805, 90.424597**

**Other Factories: Vintage Denim Ltd. (ID-10196)**



**Inspected By: Nainin Nowrose**

**Date: 16 November 2023**

# Fire Safety Inspection Report

## Vintage Denim Ltd. (Extension)

### Introduction:

**Vintage Denim Ltd. (Extension)** complex was surveyed for fire safety on **16/11/2023** by The RSC Inspection Team. The purpose of the survey was to identify significant fire safety issues and to provide recommendations for remediation based on applicable standards specified by the RSC. The scope of this initial fire safety inspection was limited to the review and identification of major fire safety issues. The inspection did not include identification of minor deficiencies, which will be further addressed as part of follow-up inspections.

### Limitations

The information in this fire safety inspection report was obtained during a visit to the facility and during interviews with local factory management. It has not been possible to provide independent verification for all the information and data collected, and, therefore, The RSC cannot accept general responsibility for omissions or errors arising from inaccuracies in this report from the information obtained.

The findings and recommendations in this report are not intended to imply, guarantee, ensure or warrant compliance with any government regulations. Additionally, the results do not imply in any way that compliance with the findings or recommendations as stated in this report will eliminate all hazards, risks or exposures or that hazards, risks or exposures not referred to in this report do not exist. Compliance with the findings and recommendations stated in this report does not relieve the factory owner from obligation to comply with specific project requirements, industry standards, or the provisions of any local government regulations.

## General Factory Information

**Factory Building name(s):** There are total 5 structures in the premises under this ID. Those are :

**1. Fabric Store (Single storied steel shed),**

Design Approved by Sreepur Pourashava on 24 April 2019

Construction Period Interim.

Total area of the Shed: 912.02 sqm.

**2. Gas Generator Room**

**3. Guard Room**

**4. RMS Room**


**5. Kitchen Room**

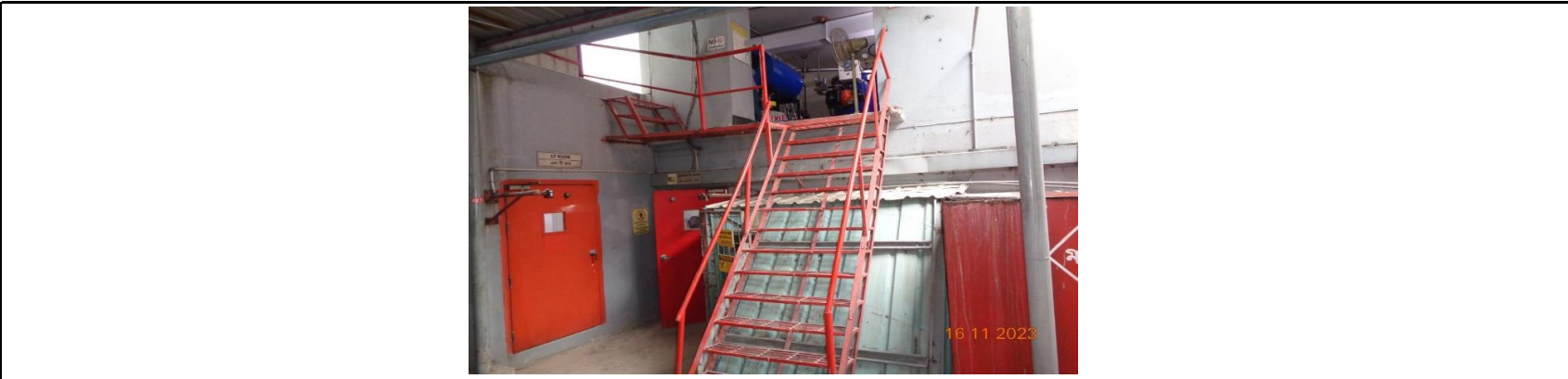
**Factory Address:** Gilarchala, Sreepur, Gazipur

## Findings & Recommendations :

Table 1 summarizes the major fire safety issues identified during the inspection. Recommendations have been provided to address each issue. An implementation schedule shall be developed by the factory to remediate each of the findings. The specific timing of improvements, including any requested extensions due to design / installation constraints, shall be submitted to the RSC for review.



Table-1:

| SI No.   | Category                | Findings   | Required Action  | Remediation Time Frame |
|--|-------------------------|--|--|------------------------|
| F-1  | Fire Rated Construction | The main structural elements of the building are constructed by steel which is non-rated and were found in exposed condition without any fire protection. (Interim Structure). | The building is interim steel structure which shall be type-I construction. So, provide require rating in the structural elements of the buildings. Consult with a qualified fire protection engineer. Follow BNBC 2006-Table 3.2.4, 3.1.9 and 3.3.1 as reference. | Within 6 months        |
|  |                         |  |  |                        |
| F-2  | Fire Rated Construction | The boiler room was not separated by fire rated construction due to unprocted openings.<br><b>Location:</b> Gas generator room.  | Separate the boiler and transformer rooms by a minimum 1-hr fire-rated construction. Seal and/or protected all openings to maintain the required fire separations.   | Within 3 months        |




|     |                         |  |   |                 |
|-----|-------------------------|--|---|-----------------|
| F-3 | Fire Rated Construction | <p>The egress court ( exit discharge path) is found unprotected.</p> <p><b>Location:</b> Gas generator room.</p> | <p>Seal all penetrations and openings along the discharge path, up to a height of 10 ft. to provide a minimum 1-hr fire seperation.</p> | Within 3 months |
|-----|-------------------------|--|---|-----------------|



|   |                 |   |   |                       |
|---|-----------------|---|---|-----------------------|
| F-4   | Egress Lighting | <p>Manual on-off switch is provided for emergency lighting / exit sign units.<br/> <b>Location:</b> Fabric store.</p>   | <p>Remove manual on/off switches from emergency lighting / exit signage units to prevent them from being switched off.</p>  | <p>Within 1 month</p> |
| <div style="display: flex; justify-content: space-around;">   </div> |                 |   |   |                       |
| F-5   | Egress Lighting | <p>The directional signs are not provided where there is a change in direction and where the continuation of the egress path is not obvious. <b>Location:</b> Fabric store.</p> | <p>Illuminated directional signs shall be provided where there is a change in the direction for the path of travel and the direction to an exit is not obvious.</p> | <p>Within 1 month</p> |

|   |                 |   |   |                |
|---|-----------------|---|---|----------------|
|   |                 |   |   |                |
| F-6   | Egress Lighting | <p>Based on the number and location of emergency lights observed, adequate illumination levels are not anticipated along egress routes.</p> <p><b>Location:</b> Fabric store.</p> | <p>Test the emergency lighting system on each floor and provide additional emergency fixtures to provide adequate illumination along the means of egress. Provide a minimum illumination of 10 lux at the floor level within exit stairs and exit discharge paths and minimum 2.5 lux along exit access aisles.</p> | Within 1 month |
|  |                 |   |   |                |

|  |                 |  |  |                 |
|--|-----------------|--|--|-----------------|
| F-7  | Means of Egress | Travel distance of egress exceeds limit on the Fabric store.   | Reconfigure the egress arrangement or provide an additional exit so that the travel distance for group H occupancies shall not exceed 30m (100ft). | Within 1 months |
|  |                 |  |  |                 |
| F-8  | Means of Egress | Occupant load signs at required exits are not posted in accordance with the RSC Technical Guidelines (StandardV1.0) section 6.4.4. | Provide occupant load signs at required locations.   | Within 1 month  |
| F-9  | Means of Egress | Sliding doors are provided at building exits.<br><b>Location:</b> Fabric store.  | Replace all collapsible and sliding doors along the means of egress with side-hinged, swinging egress doors.                                       | Within 1 month  |



|      |  |  |   |                |
|------|--|--|---|----------------|
| F-10 | Fire Alarm and Detection System (FADS) | The addressable fire alarm and detection system integrally installed with an existing ID(10196) buildings which has gone through T&C process and currently under Final Verification stage. | The outstanding issues related to the system shall be remediated following the last T&CVI report of ID-10196 and apply RSC for Final Verification Inspection (FVI). The design and docuemnts shall be updated combinly with old ID. | within 1 Month |
|------|--|--|---|----------------|



|      |   |   |  |                             |
|------|---|---|--|-----------------------------|
| F-11 | ITM of Fire Alarm and Detection System (FADS) | Inspection, testing and maintenance for the fire detection and alarm system was not in accordance with NFPA 72. | Inspect, test and maintain the fire alarm system and keep written records on-site, in accordance with Table-14.3.1 of NFPA 72. | 1 Month after installation. |
|------|---|---|--|-----------------------------|