

# MEEK KNIT LIMITED

Vogra , National University , Joydebpur,Gazipur  
(23.58530N ,90.22504E)

28<sup>th</sup> October 2015



# Observations

## Problem Observed in the Main Factory Building:

- No roof parapets or fall restrains (non-structural observation)
- Uncontrolled conditions on the roof slab
- Uncontrolled storage areas
- Facade breakouts
- Non-engineered riser
- Wet surface on the toilet wall
- Defective beam
- Non-engineered pedestrian bridge

**No roof parapets or fall restrains (non-structural observation)**



No edge protection on the roof

## Observations – Main Building

# Uncontrolled roof slab conditions



**Uncontrolled storage materials**



**Roof slab degradation**



**Unprotected lift shaft**

## Observations – Main Building

# Uncontrolled storage areas



2nd Floor



Ground Floor

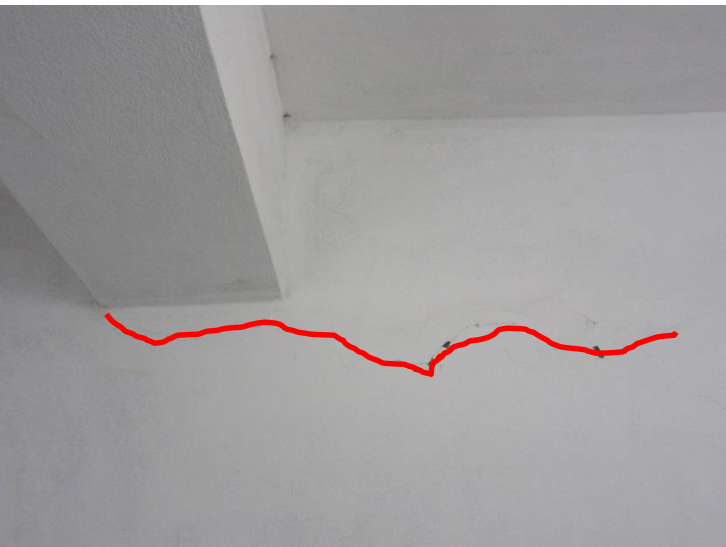


1st Floor

# Facade breakouts



West Facade pillar



North elevation



4th Floor



3rd Floor

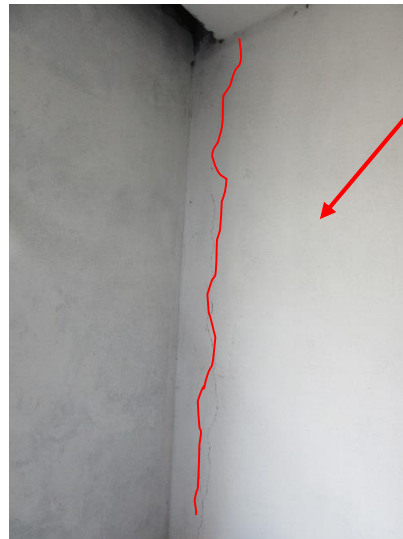
South cantiliver partition wall



North staircase. 2nd Floor



North staircase. 1st Floor



# Non-engineered riser



3rd Floor



Basement



4th Floor



1st Floor

# Wet surface on the toilet wall



1st Floor Toilet wall, On production side

# Defective beam



1st Floor. Staircase

# Non-engineered pedestrian bridge



Pedestrian link between 2 buildings – No structural documentation

# Priority Actions

# Problems Observed

## Main Building

**ITEM 1: No roof parapets or fall restrains (non-structural observation)**

**ITEM 2: Uncontrolled conditions on the roof slab**

**ITEM 3: Uncontrolled storage areas**

**ITEM 4: Facade breakouts**

**ITEM 5: Non-engineered riser**

**ITEM 6: Wet surface on the toilet wall**

**ITEM 7: Defective beam**

**ITEM 8: Non-engineered pedestrian bridge**

Item No.	Observation	Recommended Action Plan	Recommended Timeline
1	No roof parapets or fall restraints (non structural)	Roof edge to be made safe	6-weeks
2	Uncontrolled conditions on the roof slab	Remove construction materials from the roof	6-weeks
3	Uncontrolled conditions on the roof slab	Protect roof slab surface and against weather conditions	6-weeks
4	Uncontrolled conditions on the roof slab	Cover the lift shafts	6-weeks

Item No.	Observation	Recommended Action Plan	Recommended Timeline
5	Uncontrolled storage areas	The quantity of the stored materials must be reduced to the level specified by the original designer	6-weeks
6	Uncontrolled storage areas	Building Engineer to provide Load Plans for each level	6-weeks
7	Uncontrolled storage areas	Reduce loading to the recommendations of the loading plans	6-months
8	Façade breakouts	Repair the cracks	6-months

<b>Item No.</b>	<b>Observation</b>	<b>Recommended Action Plan</b>	<b>Recommended Timeline</b>
9	Non-engineered riser	The slab openings should be filled-out with concrete material	<b>6-weeks</b>
10	Wet surface on the toilet wall	Building Engineer to check the cause of the water leak and it should be repaired	<b>6-months</b>
11	Defective beam	Repair the beam	<b>6-months</b>
12	Non-engineered pedestrian bridge	Building Engineer to check the support detail of the pedestrian bridge on the 1st level structure of the Main Building	<b>6-weeks</b>
13	Non-engineered pedestrian bridge	Carry out any remedial works from the design Engineers study	<b>6-months</b>