

Shipra Fashion Ltd.

Shailat, Nijmawna, Sreepur, Gazipur.

(24.293205, 90.325926)

20 March 2023



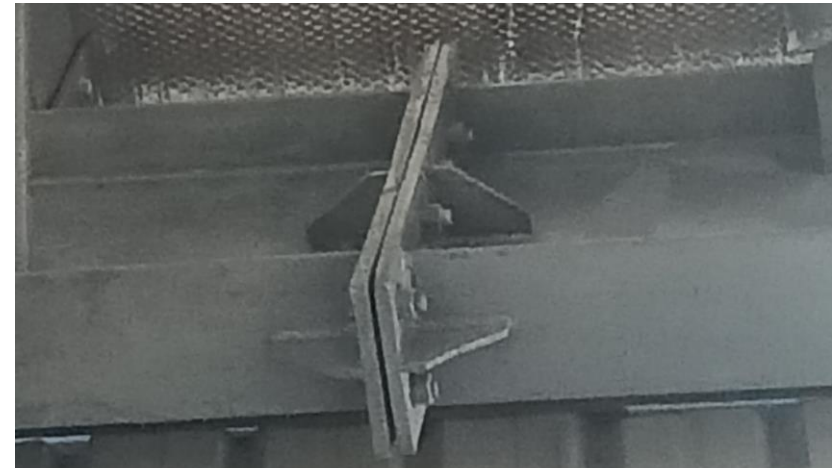
Buildings Information

1. Main Factory Shed: (G+M)
2. Finishing & Warehouse Shed: (G)
3. Utility Building: (G)
4. Child Care & Office Building: (G)
5. Toilet Block: (G)
6. Canteen & Pump Room: (G)
7. Parking Shed: (G)

Observations

Bolt missing and connection gap

Bolt missing and significant gaps observed in rafter-column joint at several locations. Building engineer is required to install the missing bolts and carry out suitable remedial works.

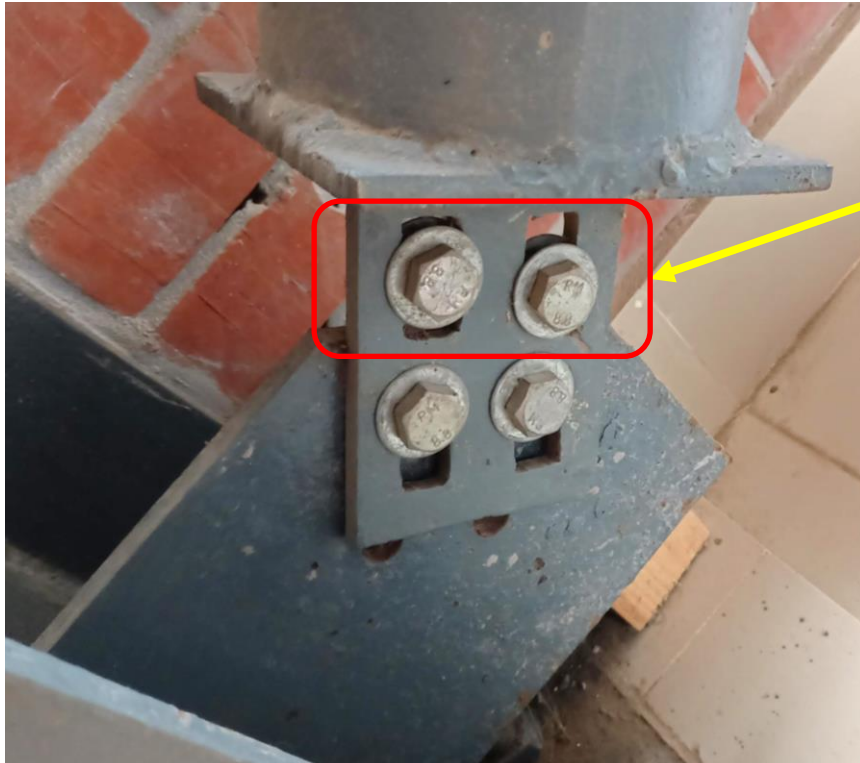
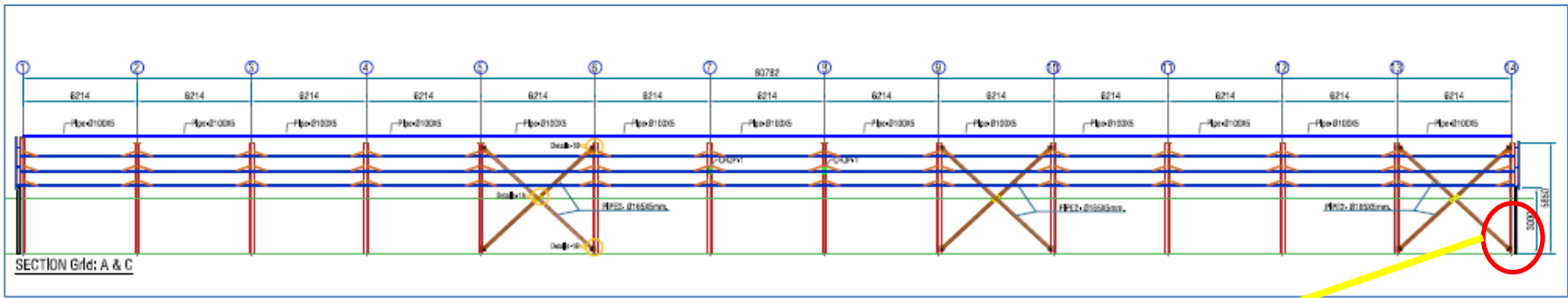


Bolt missing

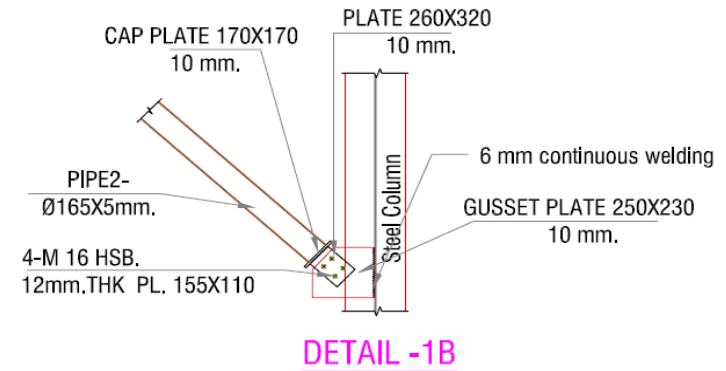
Gap observed in connections

Observation: Finishing & Warehouse Shed

Bolt placed out gusset plate



2 out bolts are not connected with gusset plate and Long slotted holes in the connection



2 out of 4 bolts are not connected with gusset plate. Rest of 2 bolts are connected with large slotted holes which is placed along the line of action of forces. The connection may not functional due to lack of active bolts and loose connections. However, the building engineer is required check the connection type, code requirements for long slotted holes & connection design method and suggest suitable repair action accordingly.

Lack of water proofing at MCAC roof



MCAC roof of Child Care & Office Building

Water proofing was not applied on the roof. The roof is made of brick aggregate concrete. The building engineer is required to apply the water proofing layer on the current roof with proper slope.

Lack of lateral stability system



Lack of compression member along long direction of the shed

The building engineer is required to check the lateral stability system of the steel shed.

Priority Actions

Problems Observed

Finishing & Warehouse Shed :

Item 01: Bolt missing and connection gap.

Item 02: Bolt placed out gusset plate.

Child Care & Office Building:

Item 03: Lack of water proofing at MCAC roof.

Canteen & Pump Room Shed:

Item 5: Lack of lateral stability.

Item No.	Observation	Recommended Action Plan	Recommended Timeline
01	Bolt missing and connection gap. (Finishing & Warehouse Shed)	Building engineer is required to repair the gap in connections with a suitable method.	6-weeks
02	Bolt missing and connection gap. (Finishing & Warehouse Shed)	Install the missing bolt where necessary.	6-weeks
03	Bolt placed out gusset plate. (Finishing & Warehouse Shed)	The building engineer is required check the connection type, code requirements for long slotted holes & connection design method and suggest suitable repair action accordingly.	6-weeks
04	Bolt placed out gusset plate. (Finishing & Warehouse Shed)	Carry out repair works if required.	6-months
05	Lack of water proofing at MCAC roof. (Child Care & Office Building)	Provide water proofing layer and maintain proper slope on the roof.	6-weeks

Item No.	Observation	Recommended Action Plan	Recommended Timeline
06	Lack of lateral stability system. (Canteen & Pump Room Shed)	Building engineer is required to check the lateral stability system and suggest proper remedial actions accordingly.	6-weeks
07	Lack of lateral stability system. (Canteen & Pump Room Shed)	Carry out suggested remedial works.	6-months