

# Armour Garments Ltd. Envoy Garments Ltd.

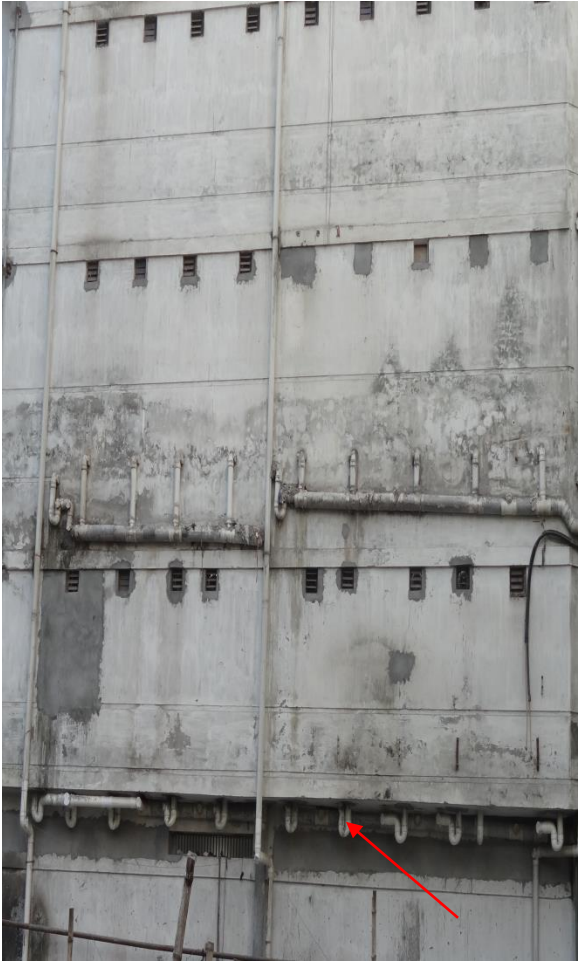
380/31/1 East Rampura, Dhaka-121.  
(23.763602, 90.423651)

3<sup>rd</sup> February 2015



# Observations

# Cantilever floor slabs



Cantilever at North side

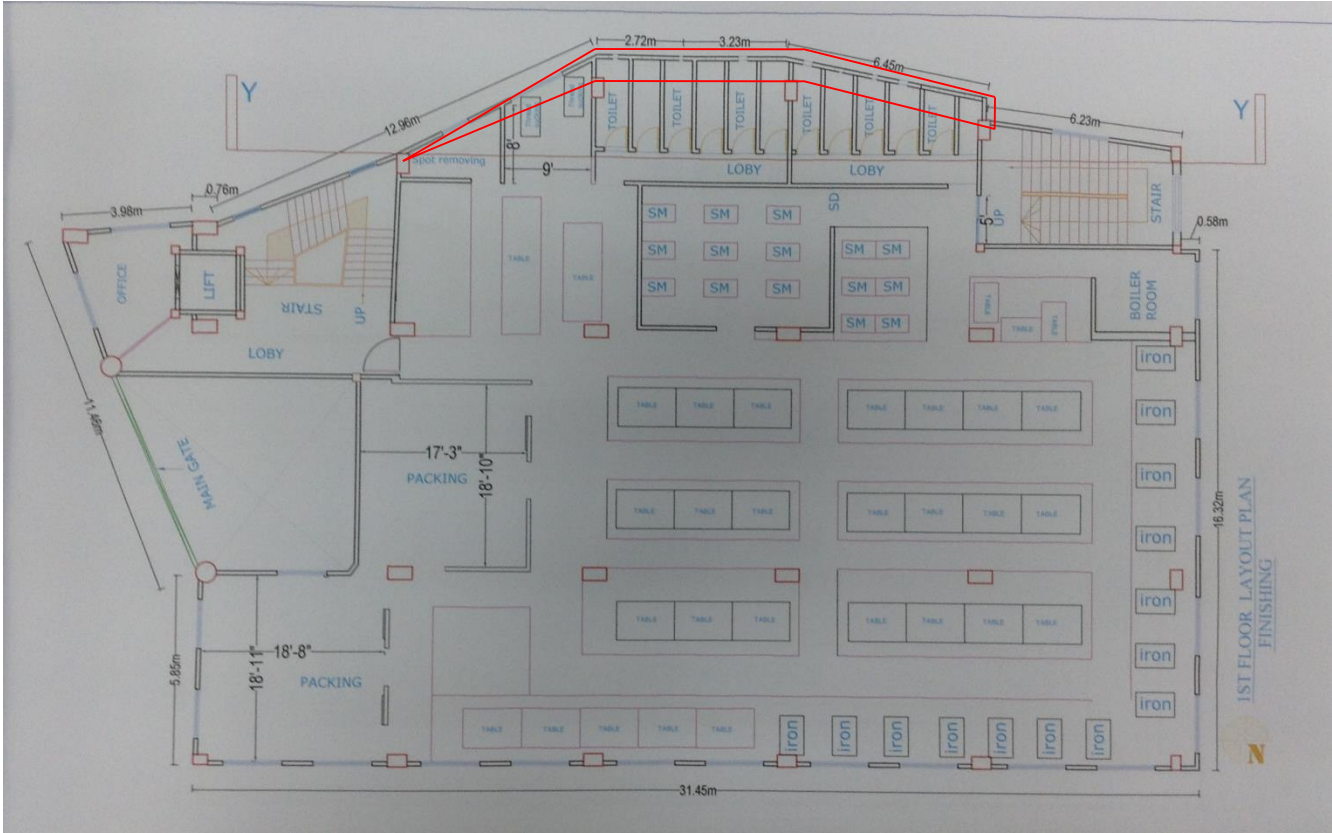


Cantilever at West side



Cantilever at south side

# Toilets Located in North side cantilever portion



## Loading on Top Floors



Water tanks on roof



Storage at level 7

# Discrepancies between site observations and information on drawings

# Discrepancies between Drawings and Actual Observations



Rebar Fabrication found on site

16-20mm $\emptyset$  rebar found on site

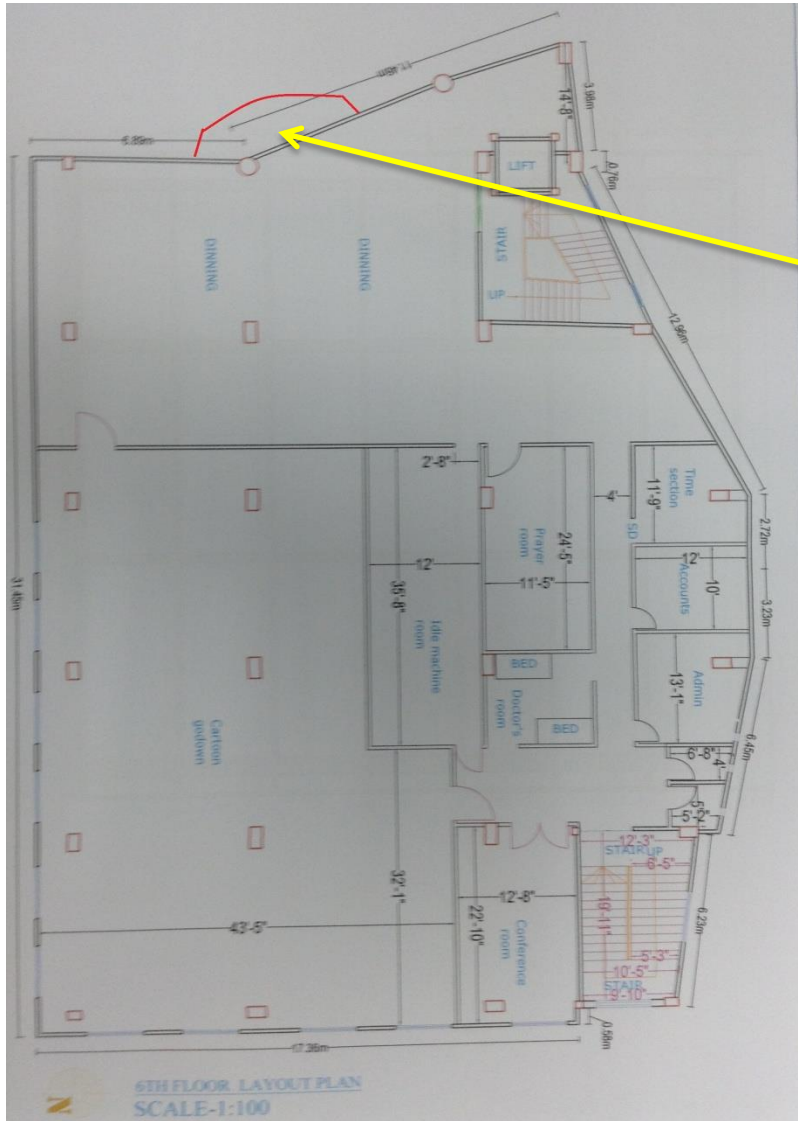
Column Schedule:

|    | Ground Floor    | First Floor     | 2nd to Top Floor | Stirrup         |
|----|-----------------|-----------------|------------------|-----------------|
| C1 | 20"<br>12-Ø25mm | 20"<br>12-Ø25mm | 18"<br>10-Ø25mm  | Ø10 mm@6"-8" cc |
| C2 | 28"<br>18-Ø25mm | 28"<br>18-Ø25mm | 24"<br>16-Ø25mm  | Ø10 mm@6"-8" cc |
| C3 | 32"<br>18-Ø25mm | 32"<br>18-Ø25mm | 30"<br>16-Ø25mm  | Ø10 mm@6"-8" cc |
| C4 | 38"<br>22-Ø25mm | 38"<br>22-Ø25mm | 34"<br>20-Ø25mm  | Ø10 mm@6"-8" cc |
| C5 | 16-Ø25mm        | 16-Ø25mm        | 16-Ø25mm         | Ø10 mm@6"-8" cc |

Column layout on Structural drawing

16-25mm $\emptyset$  rebar found on site

# Discrepancies between Drawings and Actual Observations



# Apparently non-engineered roof structures

## Apparently non-engineered roof structures



Stair near canteen at level 6



Stair at level 7

**Observation**

# Priority Actions

# Issues Observed

**ITEM 1:** Different rebar noted on-site to the structural rebar drawings

**ITEM 2:** Cantilevers noted on each elevation on each floor plate

**ITEM 3:** Significant build-up in toilets

**ITEM 4:** Non- engineered metal roofs to both staircores

**ITEM 5:** Water tanks on the roof

| Item No. | Observation  | Recommended Action Plan   | Recommended Timeline |
|----------|--|---|----------------------|
| 1        | Different rebar noted on-site to the structural rebar drawings | Engineer to revise engineering drawings to reflect correct rebar.   | 6-months             |
| 2        | Cantilevers noted on each elevation on each floor plate        | Engineer to expand current slab structural calculation study to cover the cantilever section of the slab. | 6-months             |
| 3        | Significant build-up in toilets                                | Engineer to expand current slab structural calculation study to cover the toilet loading on the slab.     | 6-months             |
| 4        | Non-engineered metal roofs to both staircores                  | Engineer to assess the current non-engineered roof structures to both cores                               | 6-months             |
| 5        | Water Tanks on the roof  | Engineer to confirm the adequacy of the roof slab to carry the water tanks.                               | 6-months             |