

FIRE SAFETY INSPECTION REPORT

**AMS INTERNATIONAL SWEATERS LTD.
34, CHOYDANA, NATIONAL UNIVERSITY, GAZIPUR**

OTHER FACTORIES: MALIM (BD) CO. LTD.



ACCORD
on Fire and Building Safety in Bangladesh

May 22, 2014

SUMMARY

AMS International Sweaters Ltd. was surveyed for fire safety on 5/22/2014 by Hughes Associates, Inc. This summary identifies the major deficiencies that were identified during the inspection.

The purpose of this survey was to identify significant fire safety issues and to provide recommendations for remediation based on applicable standards specified by the Accord. The scope of this initial fire safety inspection was limited to the review and identification of major fire safety issues. The inspection did not include identification of minor deficiencies, which will be further addressed as part of follow-up inspections.

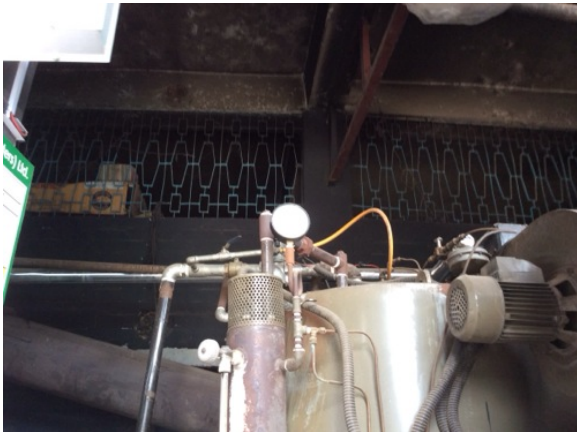
Table 1 summarizes the major fire safety issues identified during the inspection. Recommendations have been provided to address each issue.

An implementation schedule shall be developed by the factory to remediate each of the findings. The specific timing of improvements, including any requested extensions due to design / installation constraints, shall be submitted to the Accord for approval.

Table 1. Findings And Recommendations

No.	Category	Finding	Recommendation	Remediation Timeframe
F-1	Fire Rated Construction	<p>The generator room is not separated from the working areas of Malim (BD) Co. Ltd. (adjacent building) by means of fire-rated construction (non-rated door).</p> <p>The boiler room is not separated from the discharge of the southern exit stair and the working areas of Malim (BD) Co. Ltd. on the ground floor by means of fire-rated separation (non-rated door and unprotected openings)</p>	<p>Separate the boiler and generator room from the adjacent working areas and discharge pathways by a minimum 2-hr fire-rated construction. Seal and/or protected all openings to maintain the required fire separations.</p>	Within 3 months

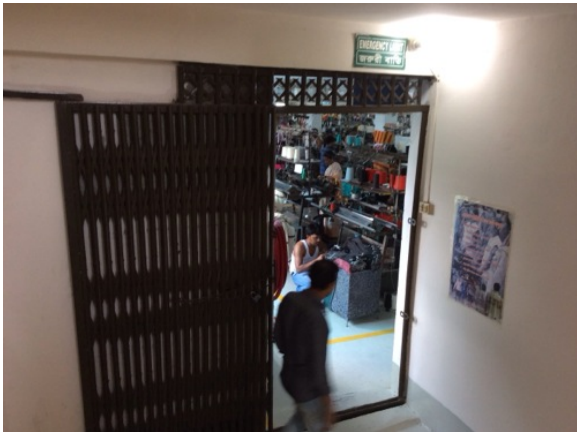




F-2	Fire Rated Construction	Dedicated storage areas on the 4th (Bonded ware house) and 2nd floor (Linking and distribution room) were not separated from the working area by means of fire rated construction (non-rated door and unprotected openings)	Provide dedicated storage rooms separated by minimum 1-hr fire-rated construction.	Within 3 months
-----	-------------------------	---	--	-----------------



F-3	Fire Rated Construction	The exit stairs are not separated from work areas on each floor by fire-rated construction.	Provide minimum 1.5-hr fire rated doors and seal all unprotected openings to separate the exit stairs from work areas and other building spaces on all floor levels. Ensure that the fire doors are self-closing and positive latching and that they are provided with fire exit (panic) hardware where serving production floors. If fire doors are required to be held open for functional reasons, provide automatic-closing devices tied to the fire alarm system.	Within 3 months
-----	-------------------------	---	---	-----------------



F-4	Fire Rated Construction	Unsealed penetrations and openings were observed in the northern stair enclosure on the 1st floor.	Seal all penetrations and openings in exit stair enclosure walls to maintain the fire separation.	Within 3 months
-----	-------------------------	--	---	-----------------



F-5	Fire Rated Construction	The transient storage area on the 3rd floor was not separated from the adjacent working areas by means of fire rated construction.	Provide dedicated storage rooms separated by minimum 1-hr fire-rated construction. Or Provide defined storage areas and limit the storage arrangement as follows: - Maximum height of 2.4m and maximum area of 23m ² - If sprinkler protected: maximum height of 3.66m and maximum area of 93m ² Separate areas of unenclosed combustible storage by a minimum clear distance of 3m.	Within 3 months
-----	-------------------------	--	---	-----------------



F-6	Fire Rated Construction	Hazardous materials storage area is not separated from the discharge of the northern exit stair by fire-rated construction (openings, non-rated doors, penetrations).	Separate the hazardous materials / flammable liquid storage room by a minimum 2-hr fire-rated construction. Seal and/or protected all openings to maintain the required fire separations.	Within 3 months
-----	-------------------------	---	---	-----------------



F-7	Fire Rated Construction	The exit discharge path serving the northern exit is less than 10 ft wide and is not separated from the building interior.	Seal all penetrations and openings to the interior of the building along the discharge path, up to a height of 10 ft., to provide a minimum 1-hr fire separation.	Within 6 months
-----	-------------------------	--	---	-----------------



F-8	Egress	Egress doors and gates with locking features are provided at all building exits, exit stairs, along egress routes and at all exit discharges.	Remove locking features from all egress doors / gates. If locks are required for security reasons, utilize special door locking features complying with NFPA 101.	Immediate
-----	--------	---	--	-----------



F-9 Egress

An air compressor was located on the ground floor of the northern stair.

Remove all storage from exit stairs and egress paths.

Immediate



F-10	Egress	Collapsible gates and sliding doors are provided at all building exits, exit stairs, and exit discharges.	Replace all gates / sliding doors along the means of egress with side-hinged, swinging egress doors. If locks are required for security reasons, utilize special door locking features complying with NFPA 101.	Within 1 month
------	--------	---	--	----------------



F-11	Egress	Both the exit stair doors on the 5th floor do not swing in the direction of egress travel.	Modify the egress door to swing in the direction of egress travel.	Within 3 months
------	--------	--	--	-----------------



F-12	Egress	The day-care room on the 1st floor does not have direct access to an exit stair.	Provide a minimum 2-hr fire-rated exit corridor between the day-care room and exit stair. Or Relocate day-care room to ground floor with maximum travel distance of 9m (30 ft).	Within 3 months
F-13	Fire Protection	The fire alarm system is antiquated, not a listed system, and does not provide alarm and notification features consistent with acceptable standards.	Replace the fire alarm system with a new, listed addressable fire alarm system in accordance with NFPA 72.	Design within 4 months, install within 9 months
F-14	Fire Protection	The building is equipped with single-station smoke alarms. Smoke alarm activation sounds only a local alarm and does not provide automatic fire alarm notification of occupants.	Remove all single-station smoke alarms provide automatic smoke detection throughout the building in accordance with NFPA-72.	Within 1 months

F-15	Fire Protection	Inspection, testing, and maintenance for the fire alarm system were not in accordance with NFPA 72.	Inspect, test and maintain the fire alarm system, and keep written records on-site, in accordance with NFPA 72.	Within 3 months
F-16	Egress Lighting	Manual on-off switch is provided for emergency lighting and exit signage units on many floors.	Remove manual on/off switches from emergency lighting and exit signage units to prevent them from being switched off.	Within 1 month
F-17	Egress Lighting	Inspection, testing, and maintenance records for the emergency lighting system were not available.	Inspect, test and maintain the emergency lighting system in accordance with The ACCORD standard. Keep written records on-site.	Within 3 months

