

FIRE SAFETY INSPECTION REPORT

**HAMS GARMENTS LTD.
SOUTH VANGNAHATI, CHAPILAPARA, SREEPUR**

OTHER FACTORIES: NONE



ACCORD
on Fire and Building Safety in Bangladesh

Bangladesh Accord
Foundation

April 3, 2014

SUMMARY

HAMS Garments Ltd. was surveyed for fire safety on 4/3/2014 by Hughes Associates, Inc. This summary identifies the major deficiencies that were identified during the inspection.

The purpose of this survey was to identify significant fire safety issues and to provide recommendations for remediation based on applicable standards specified by the Accord. The scope of this initial fire safety inspection was limited to the review and identification of major fire safety issues. The inspection did not include identification of minor deficiencies, which will be further addressed as part of follow-up inspections.

Tables 1 - 3 summarizes the major fire safety issues identified during the inspection. Recommendations have been provided to address each issue.

An implementation schedule shall be developed by the factory to remediate each of the findings. The specific timing of improvements, including any requested extensions due to design / installation constraints, shall be submitted to the Accord for approval.

Table 1. Findings And Recommendations - MAIN(GARMENTS)BUILDING-01

No.	Category	Finding	Recommendation	Remediation Timeframe
F-1	Fire Rated Construction	The boiler, generator, transformer room is not separated by fire-rated construction that is openings, non-rated doors, penetrations on ground floor of utility building.	Separate the boiler, generator, transformer room by a minimum 2-hr fire-rated construction. Seal and/or protected all openings to maintain the required fire separations	Within 3 months





F-2	Fire Rated Construction	Storerooms used for combustible storage on floors 1, 2, 3, and 4, are not separated by fire-rated construction.	Provide dedicated storage rooms separated by minimum 1-hr fire-rated construction.	Within 3 months
-----	-------------------------	---	--	-----------------





F-3	Fire Rated Construction	The exit stairs are not separated from work areas, other spaces on each floor by fire-rated construction.	Provide minimum 1.5-hr fire rated doors and seal all unprotected openings to separate the exit stairs from work areas and other building spaces on all floor levels. Ensure that the fire doors are self-closing and positive latching and that they are provided with fire exit (panic) hardware where serving production floors. If fire doors are required to be held open for functional reasons, provide automatic-closing devices tied to the fire alarm system.	Within 3 months
-----	-------------------------	---	---	-----------------



F-4	Fire Rated Construction	Unsealed penetrations and openings are located in the fire-rated floor/ceiling assemblies.	Seal all penetrations and openings in floor/ceiling assemblies to maintain the fire separation.	Within 3 months
-----	-------------------------	--	---	-----------------



F-5	Fire Rated Construction	Unsealed penetrations and openings are located in exit stair enclosures.	Seal all penetrations and openings in exit stair enclosure walls to maintain the fire separation.	Within 3 months
-----	-------------------------	--	---	-----------------



F-6	Fire Rated Construction	The exit discharge path serving northwest exit on ground floor is less than 10 ft wide and is not separated from the building interior.	Seal all penetrations and openings to the interior of the building along the discharge path, up to a height of 10 ft., to provide a minimum 1-hr fire separation. Alternatively, provide a second remote discharge path to the public way (only include this if feasible).	Within 6 months
-----	-------------------------	---	---	-----------------



F-7	Egress	Egress door serving 50 or more occupants does not swing in the direction of egress travel. At production areas on floors 1, 2, and 3. In addition, the egress door from daycare building does not swing in the direction of egress.	Modify the egress door to swing in the direction of egress travel.	Immediate
-----	--------	---	--	-----------



F-8	Egress	Egress doors / gates with locking features are provided through out building exits, exit stairs, along egress routes, exit discharge in all floors. The locking feature type includes: padlock , double action keylock for sliding doors.All doors were open and unlocked at the time of inspection.	Remove locking features from all egress doors / gates. If locks are required for security reasons, utilize special door locking features complying with NFPA 101.	Immediate
-----	--------	--	--	-----------





F-9	Egress	Storage was located in the egress path on floors ground, 1, 2, and 3.	Keep egress paths clear of storage.	Immediate
-----	--------	---	-------------------------------------	-----------





F-10	Egress	Storage was located in the northwest, northeast, and southwest exit stairs in floors ground, 1, 2, 3, and 4.	Remove all storage from exit stairs.	Immediate
------	--------	--	--------------------------------------	-----------





F-11 Egress

Storage was located in the open to production areas on floors 1, 2, 3, and 4.

Keep egress paths clear of storage.

Immediate





F-12 Egress

Collapsible gates / sliding doors are provided through out building exits, exit stairs, along egress routes, exit discharge on all floors.

Replace all gates / sliding doors along the means of egress with side-hinged, swinging egress doors.

If locks are required for security reasons, utilize special door locking features complying with NFPA 101.

Within 1 month





F-13	Egress	At 1st floor the common path of egress travel exceeds 30 m.	Reconfigure the egress arrangement to reduce the maximum common path of travel to not more than 30 m.	Within 3 months
------	--------	---	---	-----------------



F-14	Fire Protection	The fire alarm system is antiquated, not a listed system, and does not provide alarm and notification features consistent with acceptable standards.	Replace the fire alarm system with a new, listed addressable fire alarm system in accordance with NFPA 72.	Design within 4 months, install within 9 months
------	-----------------	--	--	---



F-15	Fire Protection	Inspection, testing, and maintenance for the fire alarm system is not in accordance with NFPA 72.	Inspect, test and maintain the fire alarm system, and keep written records on-site, in accordance with NFPA 72.	Within 3 months
------	-----------------	---	---	-----------------

F-16	Fire Protection	The building is equipped with single-station smoke alarms. Smoke alarm activation sounds only a local alarm and does not provide automatic fire alarm notification of occupants.	Remove single-station smoke alarms. Provide automatic smoke detection throughout the building in accordance with NFPA 72	Within 6 months
------	-----------------	--	--	-----------------



F-17	Egress Lighting	Exit signage not illuminated burned out, broken, etc.on all floors of the northeast exit stairs.	Regularly inspect all exit signage and replace/install lights as needed to illuminate signs.	Within 1 month
F-18	Egress Lighting	Manual on-off switch is provided for emergency lighting units "IPS" powered are connected to ON/OFF switch of the normal lighting circuits in all production floors.	Remove manual on/off switches from [emergency lighting / exit signage] units to prevent them from being switched off.	Within 1 month
F-19	Egress Lighting	Inspection, testing, and maintenance records for the emergency lighting system were not available.	Inspect, test and maintain the emergency lighting system in accordance with The ACCORD standard. Keep written records on-site.	Within 3 months

Table 2. Findings And Recommendations - Knitting building- (Building-04)

No.	Category	Finding	Recommendation	Remediation Timeframe
-----	----------	---------	----------------	-----------------------

F-1	Fire Rated Construction	Areas used for combustible storage are not separated by fire-rated construction on ground, and first(1) floor.	Provide dedicated storage rooms separated by minimum 1-hr fire-rated construction.	Within 3 months
-----	-------------------------	--	--	-----------------



F-2	Egress	Egress doors / gates with locking features are provided at building exits, exit discharge on floor ground, and 1. All gates/doors were open at the time of inspection .	Remove locking features from all egress doors / gates. If locks are required for security reasons, utilize special door locking features complying with NFPA 101.	Immediate
-----	--------	---	--	-----------



F-3 Egress

Storage was located in the egress path on floors ground and first.

Keep egress paths and stairs clear of storage.

Immediate

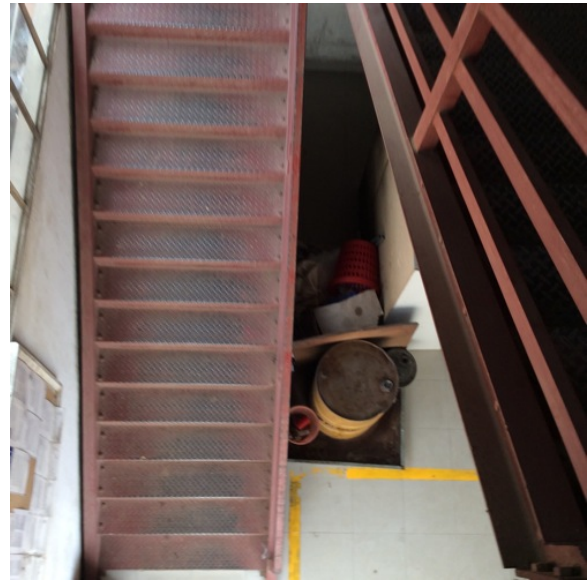


F-4 Egress

Storage was located in the exit stair on ground floor northwest exit discharge.

Remove all storage from exit stairs and egress paths.

Immediate



F-5 Egress

Collapsible gates / sliding doors are provided on ground, and 1st floor at building exits, exit discharge.

Replace all gates / sliding doors along the means of egress with side-hinged, swinging egress doors.

Within 1 month

If locks are required for security reasons, utilize special door locking features complying with NFPA 101.





F-6	Fire Protection	The fire alarm system is antiquated, not a listed system, and does not provide alarm and notification features consistent with acceptable standards.	Replace the fire alarm system with a new, listed addressable fire alarm system in accordance with NFPA 72.	Design within 4 months, install within 9 months
-----	-----------------	--	--	---



F-7	Fire Protection	Inspection, testing, and maintenance for the fire alarm system is not in accordance with NFPA 72.	Inspect, test and maintain the fire alarm system, and keep written records on-site, in accordance with NFPA 72.	Within 3 months
-----	-----------------	---	---	-----------------

F-8	Fire Protection	The building is equipped with single-station smoke alarms. Smoke alarm activation sounds only a local alarm and does not provide automatic fire alarm notification of occupants.	Remove single-station smoke alarms. Provide automatic smoke detection throughout the building in accordance with NFPA 72.	Within 6 months
-----	-----------------	--	---	-----------------



F-9	Egress Lighting	Manual on-off switch is provided for emergency lighting units connected to the same circuit as normal lighting.	Remove manual on/off switches from emergency lighting units to prevent them from being switched off.	Within 1 month
-----	-----------------	---	--	----------------

F-10	Egress Lighting	Inspection, testing, and maintenance records for the emergency lighting system were not available.	Inspect, test and maintain the emergency lighting system in accordance with The ACCORD standard. Keep written records on-site.	Within 3 months
------	-----------------	--	--	-----------------

Table 3. Findings And Recommendations - DYEING BUILDING

No.	Category	Finding	Recommendation	Remediation Timeframe
F-1	Fire Rated Construction	Areas used for combustible storage are not separated by fire- rated construction on ground and first floors.	<p>Provide dedicated storage rooms separated by minimum 1-hr fire-rated construction.</p> <p>Where separate storage rooms are not feasible, provide defined storage areas and limit the storage arrangement as follows:</p> <ul style="list-style-type: none"> - Maximum height of 2.4m and maximum area of 23m² - If sprinkler protected: maximum height of 3.66m and maximum area of 93m² <p>Separate areas of unenclosed combustible storage by a minimum clear distance of 3m.</p>	Within 3 months



F-2	Egress	Egress doors / gates with locking features are provided at building exits, on ground floor were provided with roll-down door.	Remove locking features from all egress doors / gates. If locks are required for security reasons, utilize special door locking features complying with NFPA 101.	Immediate
-----	--------	---	--	-----------



F-3	Egress	Collapsible gates / sliding doors are provided at building exits on ground floor.	Replace all gates / sliding doors along the means of egress with side-hinged, swinging egress doors. If locks are required for security reasons, utilize special door locking features complying with NFPA 101.	Within 1 month
-----	--------	---	--	----------------



F-4 Egress

Common path of egress travel exceeds 30 m on production floors at ground floor.

Reconfigure the egress arrangement to reduce the maximum common path of travel to not more than 30 m.

Within 3 months



F-5 Fire Protection

The fire alarm system is antiquated, not a listed system, and does not provide alarm and notification features consistent with acceptable standards.

Replace the fire alarm system with a new, listed addressable fire alarm system in accordance with NFPA 72.

Design within 4 months, install within 9 months



F-6	Fire Protection	Inspection, testing, and maintenance for the fire alarm system is not in accordance with NFPA 72.	Inspect, test and maintain the fire alarm system, and keep written records on-site, in accordance with NFPA 72.	Within 3 months
F-7	Fire Protection	The building is equipped with single-station smoke alarms. Smoke alarm activation sounds only a local alarm and does not provide automatic fire alarm notification of occupants.	Remove single-station smoke alarms. Provide automatic smoke detection throughout the building in accordance with NFPA 72.	Within 6 months



F-8	Egress Lighting	Manual on-off switch is provided for emergency lighting units connected to the same circuit as normal lighting in all floors.	Remove manual on/off switches from emergency lighting units to prevent them from being switched off.	Within 1 month
-----	-----------------	---	--	----------------



F-9	Egress Lighting	Inspection, testing, and maintenance records for the emergency lighting system were not available.	Inspect, test and maintain the emergency lighting system in accordance with The ACCORD standard. Keep written records on-site.	Within 3 months
-----	-----------------	--	--	-----------------