

FIRE SAFETY INSPECTION REPORT

**GMS COMPOSITE
SARDAGONJ, KASHIMPUR GAZIPUR**

OTHER FACTORIES: NONE



ACCORD
on Fire and Building Safety in Bangladesh

April 10, 2014

SUMMARY

GMS Composite was surveyed for fire safety on 4/10/2014 by Hughes Associates, Inc. This summary identifies the major deficiencies that were identified during the inspection.

The purpose of this survey was to identify significant fire safety issues and to provide recommendations for remediation based on applicable standards specified by the Accord. The scope of this initial fire safety inspection was limited to the review and identification of major fire safety issues. The inspection did not include identification of minor deficiencies, which will be further addressed as part of follow-up inspections.

Tables 1 - 6 summarizes the major fire safety issues identified during the inspection. Recommendations have been provided to address each issue.

An implementation schedule shall be developed by the factory to remediate each of the findings. The specific timing of improvements, including any requested extensions due to design / installation constraints, shall be submitted to the Accord for approval.

Table 1. Findings And Recommendations - Building -06

No.	Category	Finding	Recommendation	Remediation Timeframe
F-1	Fire Rated Construction	The exit stairs are not separated from work areas, and other spaces on each floor by fire-rated construction.	Provide minimum 1.5-hr fire rated doors and seal all unprotected openings to separate the exit stairs from work areas and other building spaces on all floor levels. Ensure that the fire doors are self-closing and positive latching and that they are provided with fire exit (panic) hardware where serving production floors. If fire doors are required to be held open for functional reasons, provide automatic-closing devices tied to the fire alarm system.	Within 3 months





F-2	Fire Rated Construction	Areas used for storage are not separated by fire-rated construction throughout the facility.	Provide dedicated storage rooms separated by minimum 1-hr fire-rated construction.	Within 3 months
			<p>Where separate storage rooms are not feasible, provide defined storage areas and limit the storage arrangement as follows:</p> <ul style="list-style-type: none"> - Maximum height of 2.4m and maximum area of 23m² - If sprinkler protected: maximum height of 3.66m and maximum area of 93m² 	
			<p>Separate areas of unenclosed combustible storage by a minimum clear distance of 3m.</p>	

GMS Composite



F-3	Fire Rated Construction	Unsealed penetrations and openings are located in exit stair enclosures on floors 5 and 6.	Seal all penetrations and openings in exit stair enclosure walls to maintain the fire separation.	Within 3 months
-----	-------------------------	--	---	-----------------



F-4 Egress

Egress doors / gates with locking features are provided at building exits, exit stairs, along egress routes, exit discharge.

Remove locking features from all egress doors / gates.

Immediate

If locks are required for security reasons, utilize special door locking features complying with NFPA 101.





F-5 Egress

Collapsible gates / sliding doors are provided at [building exits, exit stairs, along egress routes, exit discharges throughout the factory.

Replace all gates / sliding doors along the means of egress with side-hinged, swinging egress doors.

Within 1 month

If locks are required for security reasons, utilize special door locking features complying with NFPA 101.





F-6	Egress	Exit capacities on 3rd and 4th floors (1,360) are not adequate for the occupant load on 3rd (1,640) and 4th (1,581) floors.	Reduce occupant load to not more than available exit capacity.	Within 3 months
			OR If possible provide additional exits in the future to increase exit capacity.	
F-7	Fire Protection	Inspection, testing, and maintenance for the fire alarm system is not in accordance with NFPA 72	Inspect, test and maintain the fire alarm system, and keep written records on-site, in accordance with NFPA 72.	Within 3 months
F-8	Fire Protection	The building is equipped with single-station smoke alarms. Smoke alarm activation sounds only a local alarm and does not provide automatic fire alarm notification of occupants.	Remove single-station smoke alarms. Provide automatic smoke detection throughout the building in accordance with NFPA 72.	Within 6 months

F-9	Egress Lighting	Based on the number and location of emergency lights observed, adequate illumination levels are not anticipated along egress routes on ground or first floor.	Test the emergency lighting system on each floor and provide additional emergency fixtures to provide adequate illumination along the means of egress. Provide a minimum illumination of 10 lux at the floor level within exit stairs and exit discharge paths and minimum 2.5 lux along exit access aisles.	Within 3 months
-----	-----------------	---	--	-----------------



F-10	Egress Lighting	Inspection, testing, and maintenance records for the emergency lighting system were not available.	Inspect, test and maintain the emergency lighting system in accordance with The ACCORD standard. Keep written records on-site.	Within 3 months
------	-----------------	--	--	-----------------

Table 2. Findings And Recommendations - Building -05

No.	Category	Finding	Recommendation	Remediation Timeframe
F-1	Fire Rated Construction	Hazardous materials / flammable liquid storage area is not separated by fire-rated construction (openings, non-rated doors, penetrations).	Separate the hazardous materials / flammable liquid storage room by a minimum 2-hr fire-rated construction. Seal and/or protected all openings to maintain the required fire separations.	Within 3 months





F-2	Fire Rated Construction	The exit stairs are not separated from work areas, other spaces on each floor by fire-rated construction.	Provide minimum 1.5-hr fire rated doors and seal all unprotected openings to separate the exit stairs from work areas and other building spaces on all floor levels. Ensure that the fire doors are self-closing and positive latching and that they are provided with fire exit (panic) hardware where serving production floors. If fire doors are required to be held open for functional reasons, provide automatic-closing devices tied to the fire alarm system.	Within 3 months
-----	-------------------------	---	---	-----------------



F-3	Egress	Egress doors / gates with locking features are provided at building exits, exit stairs, along egress routes, exit discharge on ground floor.	Remove locking features from all egress doors / gates. If locks are required for security reasons, utilize special door locking features complying with NFPA 101.	Immediate
-----	--------	--	--	-----------



F-4	Egress	Storage was located in the exit stair on ground floor.	Remove all storage from exit stairs and egress paths.	Immediate
-----	--------	--	---	-----------



F-5	Egress	Collapsible gates / sliding doors are provided at building exits, exit stairs, along egress routes, exit discharge on ground floor.	Replace all gates / sliding doors along the means of egress with side-hinged, swinging egress doors.	Within 1 month
			If locks are required for security reasons, utilize special door locking features complying with NFPA 101.	



F-6	Fire Protection	The fire alarm system is antiquated, not a listed system, and does not provide alarm and notification features consistent with acceptable standards.	Replace the fire alarm system with a new, listed addressable fire alarm system in accordance with NFPA 72.	Design within 4 months, install within 9 months
-----	-----------------	--	--	---

F-7	Fire Protection	Inspection, testing, and maintenance for the fire alarm system is not in accordance with NFPA 72.	Inspect, test and maintain the fire alarm system, and keep written records on-site, in accordance with NFPA 72.	Within 3 months
F-8	Fire Protection	The building is equipped with single-station smoke alarms. Smoke alarm activation sounds only a local alarm and does not provide automatic fire alarm notification of occupants.	Remove single-station smoke alarms. Provide automatic smoke detection throughout the building in accordance with NFPA 72.	Within 6 months
F-9	Egress Lighting	Based on the number and location of emergency lights observed, adequate illumination levels are not anticipated along egress routes throughout the facility.	Test the emergency lighting system on each floor and provide additional emergency fixtures to provide adequate illumination along the means of egress. Provide a minimum illumination of 10 lux at the floor level within exit stairs and exit discharge paths and minimum 2.5 lux along exit access aisles.	Within 3 months



F-10	Egress Lighting	Inspection, testing, and maintenance records for the emergency lighting system were not available.	Inspect, test and maintain the emergency lighting system in accordance with The ACCORD standard. Keep written records on-site.	Within 3 months
------	-----------------	--	--	-----------------

Table 3. Findings And Recommendations - Building -04

No.	Category	Finding	Recommendation	Remediation Timeframe
F-1	Fire Rated Construction	The exit stairs are not separated from work areas, other spaces on each floor by fire-rated construction.	<p>Provide minimum 1.5-hr fire rated doors and seal all unprotected openings to separate the exit stairs from work areas and other building spaces on all floor levels. Ensure that the fire doors are self-closing and positive latching and that they are provided with fire exit (panic) hardware where serving production floors.</p> <p>If fire doors are required to be held open for functional reasons, provide automatic-closing devices tied to the fire alarm system.</p>	Within 3 months





F-2	Fire Rated Construction	Areas used for storage are not separated by fire-rated construction throughout the facility.	Provide dedicated storage rooms separated by minimum 1-hr fire-rated construction.	Within 3 months
			<p>Where separate storage rooms are not feasible, provide defined storage areas and limit the storage arrangement as follows:</p> <ul style="list-style-type: none"> - Maximum height of 2.4m and maximum area of 23m² - If sprinkler protected: maximum height of 3.66m and maximum area of 93m² 	
			<p>Separate areas of unenclosed combustible storage by a minimum clear distance of 3m.</p>	



F-3	Egress	Egress doors / gates with locking features are provided at building exits, exit stairs, along egress routes, exit discharge on all floors throughout the building.	Remove locking features from all egress doors / gates. If locks are required for security reasons, utilize special door locking features complying with NFPA 101.	Immediate
-----	--------	--	--	-----------



F-4	Egress	Exit capacity on 3rd and 4th floors are (620) not adequate for the occupant loads 3rd (735) and 4th (725).	Reduce the occupant capacity to meet exit capacity. OR: If possible provide additional exits in the future to increase exit capacity.	Immediate
-----	--------	--	---	-----------

F-5 Egress

Storage was located in the egress paths in several location in the facility.

Keep egress paths and stairs clear of storage.

Immediate



F-6	Egress	Collapsible gates / sliding doors are provided at building exits, exit stairs, along egress routes, exit discharges throughout the factory.	Replace all gates / sliding doors along the means of egress with side-hinged, swinging egress doors. If locks are required for security reasons, utilize special door locking features complying with NFPA 101.	Within 1 month
-----	--------	---	--	----------------



F-7	Egress	The width of egress aisles is less than 36-in on 5th floor accessories store.	Provide minimum aisle widths of 36-in.	Within 3 months
-----	--------	---	--	-----------------



F-8	Fire Protection	Inspection, testing, and maintenance for the fire alarm system is not in accordance with NFPA 72	Inspect, test and maintain the fire alarm system, and keep written records on-site, in accordance with NFPA 72.	Within 3 months
-----	-----------------	--	---	-----------------

F-9	Fire Protection	The building is equipped with single-station smoke alarms. Smoke alarm activation sounds only a local alarm and does not provide automatic fire alarm notification of occupants.	Remove single-station smoke alarms. Provide automatic smoke detection throughout the building in accordance with NFPA 72.	Within 6 months
F-10	Egress Lighting	Based on the number and location of emergency lights observed, adequate illumination levels are not anticipated along egress routes on ground or first floor.	Test the emergency lighting system on each floor and provide additional emergency fixtures to provide adequate illumination along the means of egress. Provide a minimum illumination of 10 lux at the floor level within exit stairs and exit discharge paths and minimum 2.5 lux along exit access aisles.	Within 3 months



F-11	Egress Lighting	Inspection, testing, and maintenance records for the emergency lighting system were not available.	Inspect, test and maintain the emergency lighting system in accordance with The ACCORD standard. Keep written records on-site.	Within 3 months
------	-----------------	--	--	-----------------

Table 4. Findings And Recommendations - Building -01

No.	Category	Finding	Recommendation	Remediation Timeframe
-----	----------	---------	----------------	-----------------------

F-1	Fire Rated Construction	Flammable liquid storage area is not separated by fire-rated construction openings, non-rated doors, open to production floors on 4th, and 5th floors.	Separate the flammable liquid storage room by a minimum 2-hr fire-rated construction. Seal and/or protected all openings to maintain the required fire separations.	Within 3 months
-----	-------------------------	--	---	-----------------





F-2	Fire Rated Construction	The boiler, generator, transformer, rooms are not separated by fire-rated construction openings, non-rated doors, penetrations on ground floor in separate sheds.	Separate the boiler, generator, transformer, EMR room by a minimum 2-hr fire-rated construction. Seal and/or protected all openings to maintain the required fire separations	Within 3 months
-----	-------------------------	---	---	-----------------





F-3	Fire Rated Construction	Areas used for combustible storage are not separated by fire-rated construction on floors 3, 4, and 5.	Provide dedicated storage rooms separated by minimum 1-hr fire-rated construction.	Within 3 months
			Where separate storage rooms are not feasible, provide defined storage areas and limit the storage arrangement as follows: - Maximum height of 2.4m and maximum area of 23m ² - If sprinkler protected: maximum height of 3.66m and maximum area of 93m ²	
			Separate areas of unenclosed combustible storage by a minimum clear distance of 3m.	



F-4	Fire Rated Construction	The exit stairs are not separated from work areas, and other spaces on each floor by fire-rated construction.	Provide minimum 1.5-hr fire rated doors and seal all unprotected openings to separate the exit stairs from work areas and other building spaces on all floor levels. Ensure that the fire doors are self-closing and positive latching and that they are provided with fire exit (panic) hardware where serving production floors.	Within 3 months
			If fire doors are required to be held open for functional reasons, provide automatic-closing devices tied to the fire alarm system.	





F-5 Egress

Egress doors / gates with locking features are provided at building exits, exit stairs, along egress routes, exit discharge on all floors through out the building. All gates/doors were open and unlocked at the time of inspection.

Remove locking features from all egress doors / gates.

If locks are required for security reasons, utilize special door locking features complying with NFPA 101.

Immediate





F-6 Egress

Storage was located in the egress path on floors 3, 4, and 5.

Keep egress paths and stairs clear of storage.

Immediate





F-7	Egress	Collapsible gates / sliding doors, roll down doors are provided at building exits, exit stairs, along egress routes, exit discharge on all floors, through out the building.	Replace all gates / sliding doors along the means of egress with side-hinged, swinging egress doors.	Within 1 month
			If locks are required for security reasons, utilize special door locking features complying with NFPA 101.	



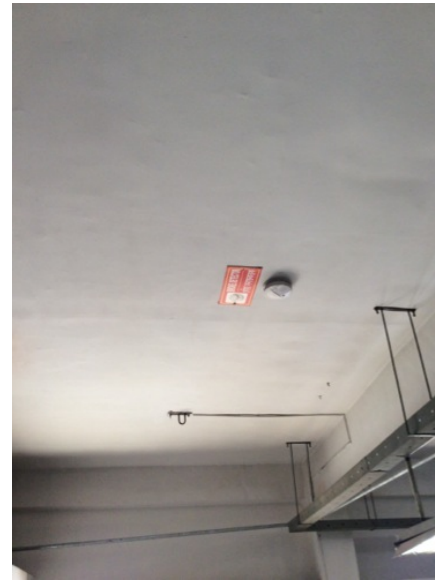


F-8	Fire Protection	The fire alarm system is antiquated, not a listed system, and does not provide alarm and notification features consistent with acceptable standards.	Replace the fire alarm system with a new, listed addressable fire alarm system in accordance with NFPA 72.	Design within 4 months, install within 9 months
-----	-----------------	--	--	---





F-9	Fire Protection	The high-rise building has an occupied floor greater than 23m (75 ft) and is not provided with automatic sprinkler protection. The large occupant loads, heavy fuel loading, and anticipated extended egress times warrant sprinkler protection.	Provide automatic sprinkler protection throughout the building in accordance with NFPA 13.	Design within 6 months, install within 12 months
F-10	Fire Protection	Inspection, testing, and maintenance for the fire alarm system is not in accordance with NFPA 72.	Inspect, test and maintain the fire alarm system, and keep written records on-site, in accordance with NFPA 72.	Within 3 months
F-11	Fire Protection	The building is equipped with single-station smoke alarms. Smoke alarm activation sounds only a local alarm and does not provide automatic fire alarm notification of occupants.	Remove single-station smoke alarms. Provide automatic smoke detection throughout the building in accordance with NFPA 72.	Within 6 months



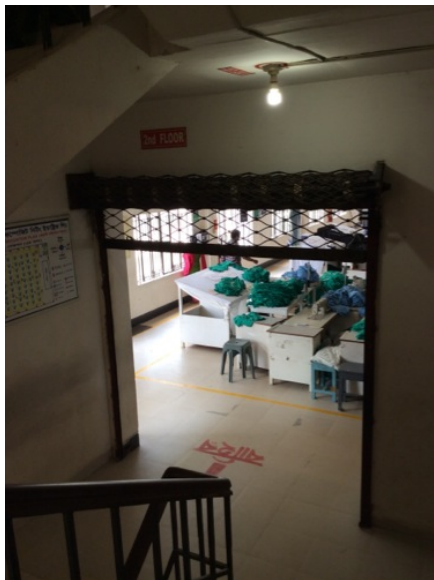
F-12	Egress Lighting	Manual on-off switch is provided for emergency lighting units on all floors connected to floor circuit lightings.	Remove manual on/off switches from emergency lighting units to prevent them from being switched off.	Within 1 month
F-13	Egress Lighting	Inspection, testing, and maintenance records for the emergency lighting system were not available.	Inspect, test and maintain the emergency lighting system in accordance with The ACCORD standard. Keep written records on-site.	Within 3 months

Table 5. Findings And Recommendations - Building -02

No.	Category	Finding	Recommendation	Remediation Timeframe
F-1	Fire Rated Construction	Areas used for combustible storage are not separated by fire- rated construction on ground floor.	<p>Provide dedicated storage rooms separated by minimum 1-hr fire-rated construction.</p> <p>Where separate storage rooms are not feasible, provide defined storage areas and limit the storage arrangement as follows:</p> <ul style="list-style-type: none"> - Maximum height of 2.4m and maximum area of 23m² - If sprinkler protected: maximum height of 3.66m and maximum area of 93m² <p>Separate areas of unenclosed combustible storage by a minimum clear distance of 3m.</p>	Within 3 months



F-2	Fire Rated Construction	The exit stairs are not separated from work areas, and other spaces on each floor by fire-rated construction.	Provide minimum 1.5-hr fire rated doors and seal all unprotected openings to separate the exit stairs from work areas and other building spaces on all floor levels. Ensure that the fire doors are self-closing and positive latching and that they are provided with fire exit (panic) hardware where serving production floors.	Within 3 months
			If fire doors are required to be held open for functional reasons, provide automatic-closing devices tied to the fire alarm system.	





F-3	Fire Rated Construction	Unsealed penetrations and openings are located in exit stair enclosures.	Seal all penetrations and openings in exit stair enclosure walls to maintain the fire separation.	Within 3 months
-----	-------------------------	--	---	-----------------



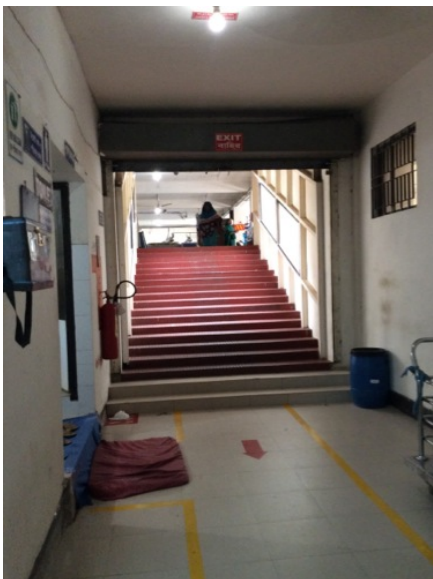
F-4	Fire Rated Construction	The exit discharge path serving north east exit, on 1st floor is less than 10 ft wide and is not separated from the building interior.	Seal all penetrations and openings to the interior of the building along the discharge path, up to a height of 10 ft., to provide a minimum 1-hr fire separation.	Within 6 months
-----	-------------------------	--	---	-----------------

Alternatively, provide a second remote discharge path to the public way (only include this if feasible).



F-5	Egress	Exit capacity is not adequate for the occupant load on floors 2, and 3 exit capacity for both floors is 412 manpower, however occupant load is 2nd floor (755 man), and 3rd floor (760 man).	Reduce occupant load to not more than available exit capacity. OR If possible, provide additional exits in the future to increase exit capacity.	Immediate
-----	--------	---	--	-----------

F-6	Egress	Egress doors / gates with locking features are provided at building exits, exit stairs, along egress routes, exit discharge on all floors and through out the building. All doors/gates were open and unlocked during inspection.	Remove locking features from all egress doors / gates. If locks are required for security reasons, utilize special door locking features complying with NFPA 101.	Immediate
-----	--------	---	--	-----------



F-7	Egress	Storage was located in the egress path on floors G, 1, 2, 3, 4, and 5.	Keep egress paths and stairs clear of storage.	Immediate
-----	--------	--	--	-----------



F-8	Egress	Storage was located in the exit stair on ground floor northeast exit stair.	Remove all storage from exit stairs and egress paths.	Immediate
-----	--------	---	---	-----------



F-9 Egress

Collapsible gates / sliding doors, roll down doors are provided at building exits, exit stairs, along egress routes, exit discharge on all floors exits.

Replace all gates / sliding doors along the means of egress with side-hinged, swinging egress doors.

If locks are required for security reasons, utilize special door locking features complying with NFPA 101.

Within 1 month

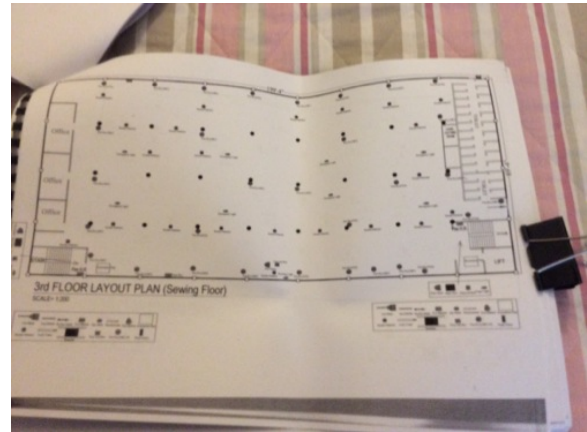
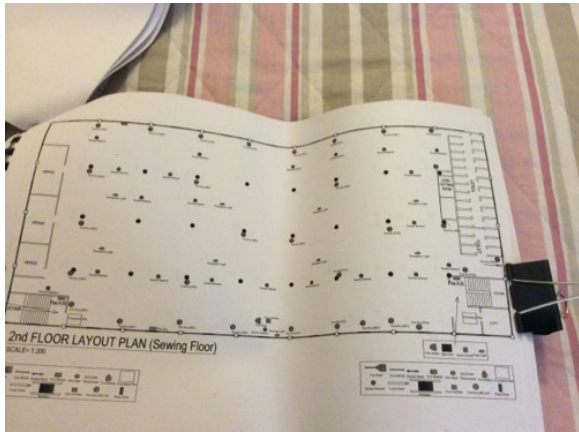




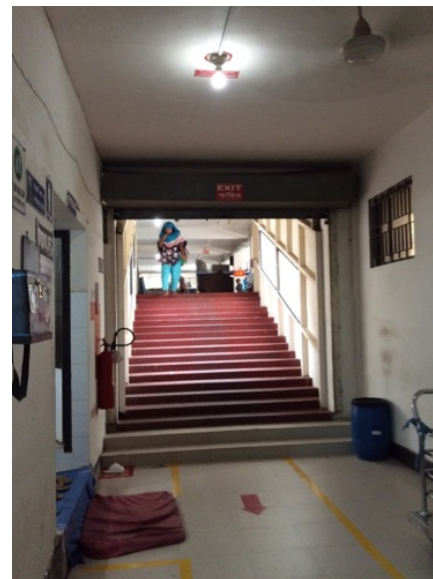
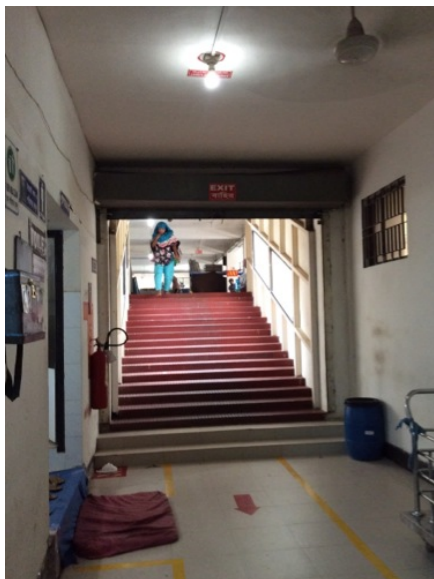
F-10	Egress	Common path of egress travel exceeds 30 m on floors 2, and 3 production area.	Reconfigure the egress arrangement to reduce the maximum common path of travel to not more than 30 m.	Within 3 months
------	--------	---	---	-----------------



F-11	Egress	Dead-end aisles exceed 30 m on floors 2, and 3 production area.	Reconfigure the egress arrangement to reduce the maximum dead-end distance to not more than 30 m.	Within 3 months
------	--------	---	---	-----------------

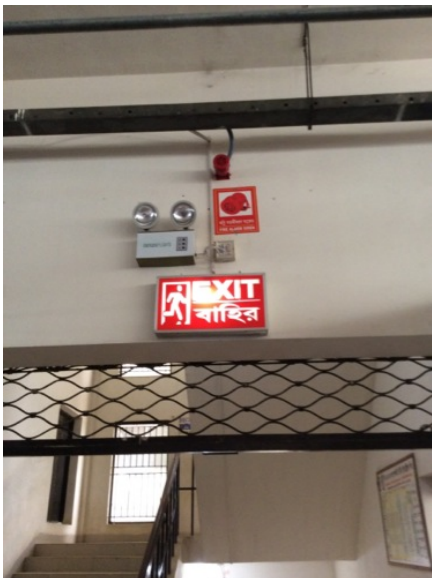


F-12	Egress	Exit stairs discharge inside the building on 1st floor northeast stair the egress route discharges to building -03 .	Provide 2-hr fire-rated exit passageway leading directly outside (vestibules to separate any storage areas).	Within 6 months
			OR	
			Provide sprinkler protection for discharge floor in accordance with NFPA 13.	





F-13	Fire Protection	The fire alarm system is antiquated, not a listed system, and does not provide alarm and notification features consistent with acceptable standards.	Replace the fire alarm system with a new, listed addressable fire alarm system in accordance with NFPA 72.	Design within 4 months, install within 9 months
------	-----------------	--	--	---





F-14	Fire Protection	The high-rise building has an occupied floor greater than 23m (75 ft) and is not provided with automatic sprinkler protection. The large occupant loads, heavy fuel loading, and anticipated extended egress times warrant sprinkler protection.	Provide automatic sprinkler protection throughout the building in accordance with NFPA 13.	Design within 6 months, install within 12 months
F-15	Fire Protection	Inspection, testing, and maintenance for the fire alarm system is not in accordance with NFPA 72.	Inspect, test and maintain the fire alarm system, and keep written records on-site, in accordance with NFPA 72.	Within 3 months
F-16	Fire Protection	The building is equipped with single-station smoke alarms. Smoke alarm activation sounds only a local alarm and does not provide automatic fire alarm notification of occupants.	Remove single-station smoke alarms. Provide automatic smoke detection throughout the building in accordance with NFPA 72.	Within 6 months



F-17	Egress Lighting	Manual on-off switch is provided for emergency lighting units for "IPS" powered system are connected to on/off switches on all floor production areas.	Remove manual on/off switches from emergency lighting units to prevent them from being switched off.	Within 1 month
F-18	Egress Lighting	Inspection, testing, and maintenance records for the emergency lighting system were not available.	Inspect, test and maintain the emergency lighting system in accordance with The ACCORD standard. Keep written records on-site.	Within 3 months

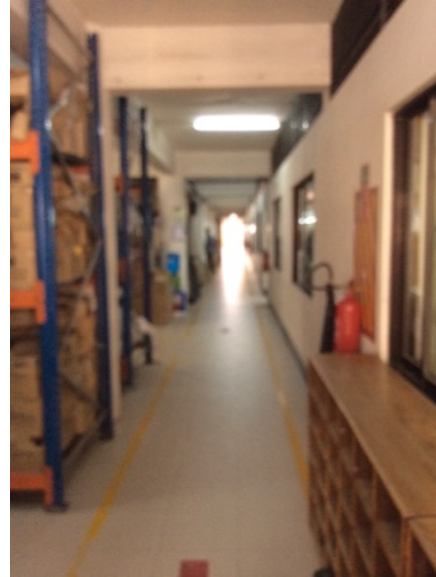
Table 6. Findings And Recommendations - Building -03

No.	Category	Finding	Recommendation	Remediation Timeframe
F-1	Fire Rated Construction	Hazardous materials and flammable liquid storage area is not separated by fire-rated construction that is openings, non-rated doors on ground floor chemical shed.	Separate the hazardous materials / flammable liquid storage room by a minimum 2-hr fire-rated construction. Seal and/or protected all openings to maintain the required fire separations.	Within 3 months





F-2	Fire Rated Construction	Areas used for combustible storage are not separated by fire-rated construction on floors G, 2, 4, and 5.	<p>Provide dedicated storage rooms separated by minimum 1-hr fire-rated construction.</p> <p>Where separate storage rooms are not feasible, provide defined storage areas and limit the storage arrangement as follows:</p> <ul style="list-style-type: none"> - Maximum height of 2.4m and maximum area of 23m² - If sprinkler protected: maximum height of 3.66m and maximum area of 93m² <p>Separate areas of unenclosed combustible storage by a minimum clear distance of 3m.</p>	Within 3 months
-----	-------------------------	---	--	-----------------



F-3	Fire Rated Construction	The exit stairs are not separated from work areas, and other spaces on each floor by fire-rated construction.	Provide minimum 1.5-hr fire rated doors and seal all unprotected openings to separate the exit stairs from work areas and other building spaces on all floor levels. Ensure that the fire doors are self-closing and positive latching and that they are provided with fire exit (panic) hardware where serving production floors.	Within 3 months
			If fire doors are required to be held open for functional reasons, provide automatic-closing devices tied to the fire alarm system.	





F-4	Fire Rated Construction	The exit discharge path serving north exit on 1st floor, is less than 10 ft wide and is not separated from the building interior.	Seal all penetrations and openings to the interior of the building along the discharge path, up to a height of 10 ft., to provide a minimum 1-hr fire separation. Alternatively, provide a second remote discharge path to the public way (only include this if feasible).	Within 6 months
-----	-------------------------	---	---	-----------------



F-5	Egress	Egress doors / gates with locking features are provided at building exits, exit stairs, along egress routes, exit discharge on all floors through out the building. All doors/gates were open and unlocked at the time of inspection.	Remove locking features from all egress doors / gates. If locks are required for security reasons, utilize special door locking features complying with NFPA 101.	Immediate
-----	--------	---	--	-----------



F-6	Egress	Storage was located in the egress path on floors ground, 2nd, 4th and 5th.	Keep egress paths and stairs clear of storage.	Immediate
-----	--------	--	--	-----------



F-7	Egress	Storage was located in the north east exit stair on 3rd floor.	Remove all storage from exit stairs and egress paths.	Immediate
-----	--------	--	---	-----------



F-8 Egress

Collapsible gates / sliding doors, and roll down doors are provided at building exits, exit stairs, along egress routes, exit discharge on all floors.

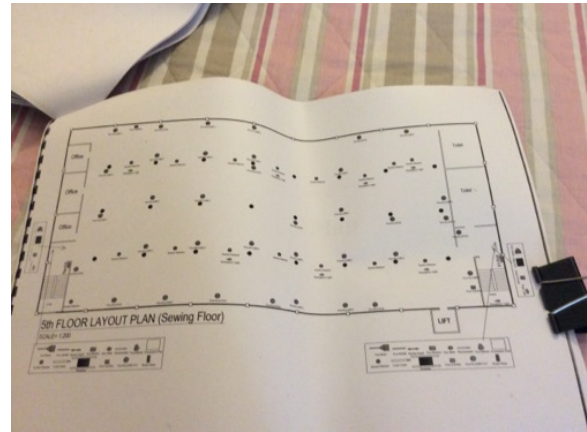
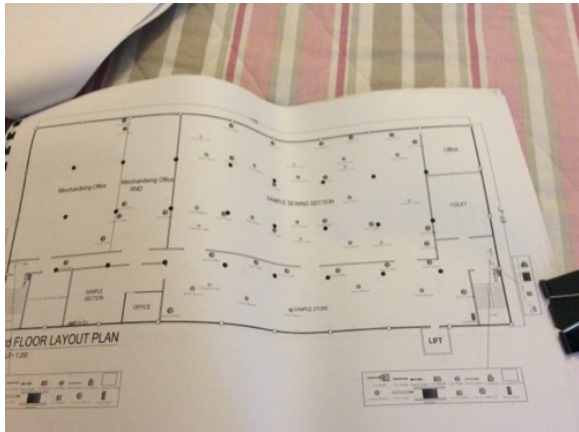
Replace all gates / sliding doors, along the means of egress with side-hinged, swinging egress doors.

Within 1 month

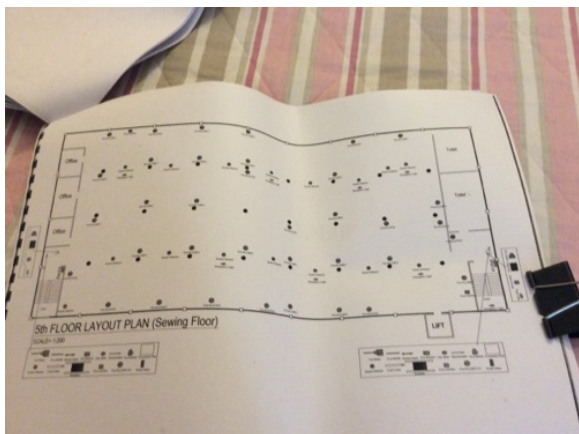
If locks are required for security reasons, utilize special door locking features complying with NFPA 101.



F-9	Egress	Common path of egress travel exceeds 30 m on floors 3, and 5.	Reconfigure the egress arrangement to reduce the maximum common path of travel to not more than 30 m.	Within 3 months
-----	--------	---	---	-----------------



F-10	Egress	Dead-end aisles exceed 30 m on 5th floor.	Reconfigure the egress arrangement to reduce the maximum dead-end distance to not more than 30 m.	Within 3 months
------	--------	---	---	-----------------



F-11	Egress	North exit stairs discharge inside on the 1st floor, of building-02.	Provide 2-hr fire-rated exit passageway leading directly outside (vestibules to separate any storage areas).	Within 6 months
OR				
- Provide sprinkler protection for discharge floor in accordance with NFPA 13.				



F-12	Fire Protection	The fire alarm system is antiquated, not a listed system, and does not provide alarm and notification features consistent with acceptable standards.	Replace the fire alarm system with a new, listed addressable fire alarm system in accordance with NFPA 72.	Design within 4 months, install within 9 months
------	-----------------	--	--	---



F-13	Fire Protection	Inspection, testing, and maintenance for the fire alarm system is not in accordance with NFPA 72.	Inspect, test and maintain the fire alarm system, and keep written records on-site, in accordance with NFPA 72.	Within 3 months
------	-----------------	---	---	-----------------

F-14	Fire Protection	The building is equipped with single-station smoke alarms. Smoke alarm activation sounds only a local alarm and does not provide automatic fire alarm notification of occupants.	Remove single-station smoke alarms. Provide automatic smoke detection throughout the building in accordance with NFPA 72.	Within 6 months
------	-----------------	--	---	-----------------



GMS Composite

F-15	Egress Lighting	Manual on-off switch is provided for "IPS" powered emergency lighting units on all factory floors.	Remove manual on/off switches from emergency lighting units to prevent them from being switched off.	Within 1 month
<hr/>				
F-16	Egress Lighting	Inspection, testing, and maintenance records for the emergency lighting system were not available.	Inspect, test and maintain the emergency lighting system in accordance with The ACCORD standard. Keep written records on-site.	Within 3 months