

FIRE SAFETY INSPECTION REPORT

ELEGANCE ORIENTAL LTD.

ACCORD ID: 12327

**JANGALIAPARA, VAWAL MIRZAPUR, GAZIPUR
SADAR, GAZIPUR**

OTHER FACTORIES: M. I. DYEING



ACCORD
on Fire and Building Safety in Bangladesh

April 29, 2015

SUMMARY

Elegance Oriental Ltd. was surveyed for fire safety on 4/29/2015 by Jensen Hughes. This summary identifies the major deficiencies that were identified during the inspection.

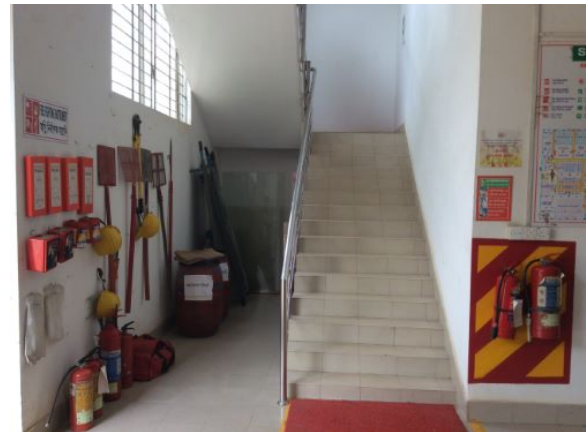
The purpose of this survey was to identify significant fire safety issues and to provide recommendations for remediation based on applicable standards specified by the Accord. The scope of this initial fire safety inspection was limited to the review and identification of major fire safety issues. The inspection did not include identification of minor deficiencies, which will be further addressed as part of follow-up inspections.

Table 1 summarizes the major fire safety issues identified during the inspection. Recommendations have been provided to address each issue.

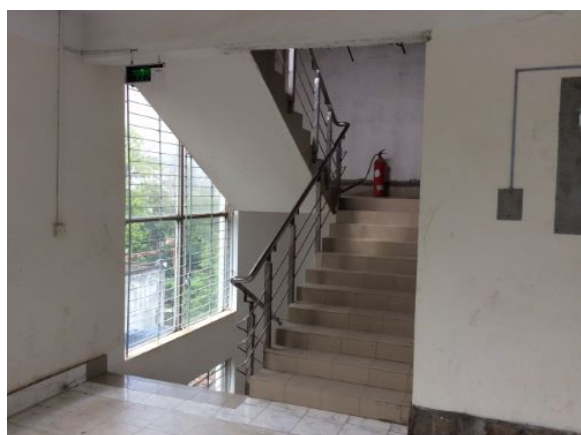
An implementation schedule shall be developed by the factory to remediate each of the findings. The specific timing of improvements, including any requested extensions due to design / installation constraints, shall be submitted to the Accord for approval.

Table 1. Findings And Recommendations

No.	Category	Finding	Recommendation	Remediation Timeframe
F-1	Fire Rated Construction	The exit stair enclosure is not separated from work areas and other spaces on each floor by fire-rated construction.	The exit stair enclosure shall be provided with a minimum 1-hr fire resistance rating for buildings with 3 or fewer stories.	Within 3 months



F-2	Fire Rated Construction	The exit stair is not separated from work areas and other spaces on each floor by fire-rated construction.	Provide minimum 1-hr rated doors for buildings with 3 or fewer stories. Seal all unprotected openings to separate the exit stairs from work areas and other building spaces on all floor levels. Ensure that the fire doors are self-closing and positive latching and that they are provided with fire exit (panic) hardware where serving production floors. If fire doors are required to be held open for functional reasons, provide automatic-closing devices tied to the fire alarm system.	Within 3 months
-----	-------------------------	--	---	-----------------



F-3	Fire Rated Construction	Unsealed penetrations and openings are located in exit stair enclosure.	Seal all penetrations and openings in exit stair enclosure walls to maintain the fire separation.	Within 3 months
-----	-------------------------	---	---	-----------------



F-4	Fire Rated Construction	Electrical panels were located in the exit stair enclosure.	Remove and re-locate all electrical panels from exit stair enclosures.	Within 3 months
-----	-------------------------	---	--	-----------------



F-5	Fire Rated Construction	Storage room discharges directly into exit stair enclosure on the first floor.	<p>Openings from exit enclosure to storage spaces shall be provided with a vestibule with fire rated construction and openings.</p> <p>Provide a 1 hr. fire rated door on the exit stair side and a 1-hr. fire rated door on the storage room side. Ensure that the fire rating of the vestibule construction matches that of the exit stair enclosure.</p>	Within 3 months
-----	-------------------------	--	---	-----------------



F-6	Fire Rated Construction	The industrial dryers are not separated by fire-rated construction on the ground floor.	Separate the industrial dryer area by a minimum 2-hr fire-rated construction. Seal and/or protect all openings to maintain the required fire separations. Provide proper ventilation and consult with a qualified engineer.	Within 3 months
-----	-------------------------	---	---	-----------------



F-7	Fire Rated Construction	The boiler room is not separated by fire-rated construction due to openings on the exterior discharge path.	Separate the boiler room by a minimum 1-hr fire-rated construction for non-high rise. Seal and/or protect all openings to maintain the required fire separations. When located to the exterior of a building, 3m (10 ft.) separation is required. Provide proper ventilation and consult a qualified engineer.	Within 3 months
-----	-------------------------	---	--	-----------------



F-8	Fire Rated Construction	Areas used for combustible storage open to the factory are not separated by fire-rated construction on the ground floor.	<p>Provide defined storage areas and limit the storage arrangement as follows:</p> <ul style="list-style-type: none">- Maximum height of 2.45m (8ft.) and maximum area of 23m² (250 ft²)- If sprinkler protected: maximum height of 3.66m (12ft.) and maximum area of 93m² (305ft²) <p>Separate areas of unenclosed combustible storage by a minimum clear distance of 3m (10ft.).</p>	Within 3 months
-----	-------------------------	--	---	-----------------









F-10	Fire Rated Construction	The exterior exit stair is not properly separated from the building.	Exterior exit stairs shall be separated from the building with a rating requirement of 1 hr. fire rating for 3 or fewer stories. The rating of the exterior wall shall extend 3.05 m (10ft) beyond the ends of the stair structure.	Within 6 months
------	-------------------------	--	---	-----------------



F-11	Egress	Building did not have stair designation signs at exit stairs. Building did not have occupant load signs on factory floors.	Provide stair designation signs and occupant load signs at required locations.	Immediately
F-12	Egress	Egress doors with locking features are provided at building exits, exit stairs and along egress routes. Egress gates with locking features are provided at building exits and along egress routes. All doors were not open and unlocked during the inspection.	<p>Remove locking features from all egress doors and gates.</p> <p>If locks are required for security reasons, utilize special door locking features complying with NFPA 101 and ACCORD standard 6.8.2.</p>	Immediately





F-13	Egress	Obstructions were located in the egress path on the ground floor.	Keep egress paths and stairs immediately clear of storage.
------	--------	---	--





F-14	Egress	Storage was located in the main exit stair on ground floor and roof top and exterior stair discharge.	Remove all storage from exit stairs and egress paths.	Immediately
------	--------	---	---	-------------





F-15	Egress	Collapsible gates and sliding doors are provided at building exits and along egress routes.	Replace all gates and sliding doors along the means of egress with side-hinged, swinging egress doors in accordance with ACCORD standard 6.8.1.	Within 1 month
------	--------	---	---	----------------



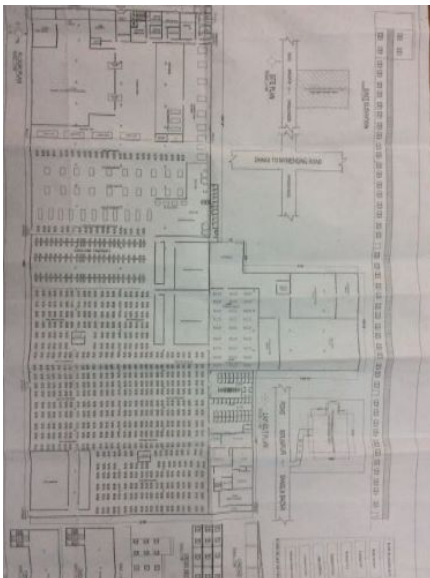


F-16	Egress	The width of egress aisles is less than 36-in. on the ground floor.	Provide minimum aisle widths of 36-in.	Within 3 months
------	--------	---	--	-----------------

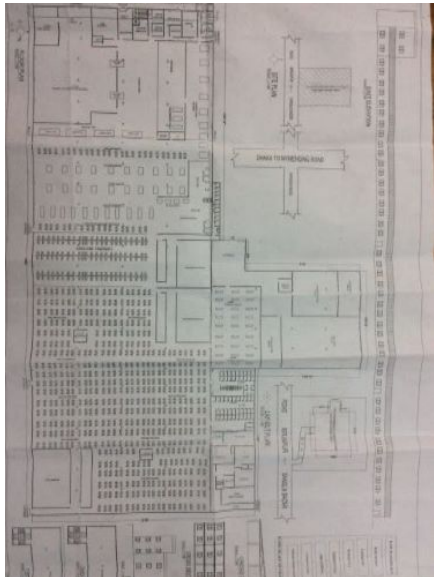




F-17	Egress	Common path of egress travel exceeds limit on the ground floor.	Reconfigure the egress arrangement to reduce the maximum common path of travel to not more than 23 m (75 ft.) or 30 m (100 ft.) when complete sprinkler protection is provided.	Within 3 months
------	--------	---	---	-----------------



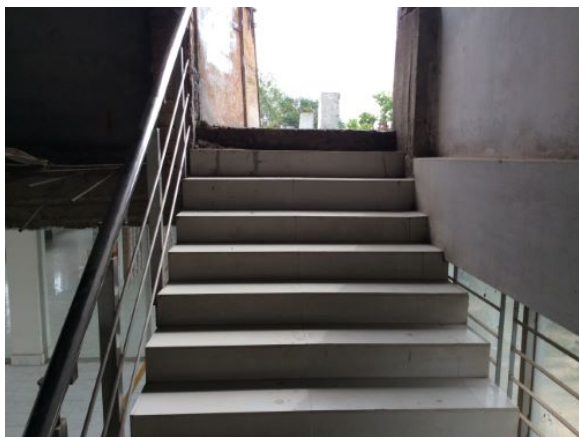
F-18	Egress	Dead-end aisles exceed 15 m (50 ft.) on all floors.	Reconfigure the egress arrangement to reduce the maximum dead-end distance to not more than 15 m (50 ft.).	Within 3 months
------	--------	---	--	-----------------



F-19	Egress	Exit stair door does not swing in the direction of egress travel on the mezzanine floor.	Modify the egress door to swing in the direction of egress travel.	Within 3 months
------	--------	--	--	-----------------

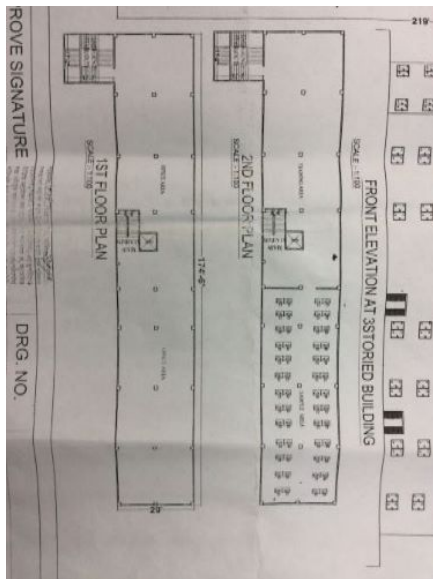


F-20	Egress	Handrails are not provided on both sides of the exit stairs.	Provide handrails on both sides of the exit stairs. New handrails shall have a minimum height of 865 mm (34 in.) and a maximum height of 965 mm (38 in.) as measured from the leading edge of the tread. Intermediate handrails shall be provided when the stair width exceeds 2.2 m (87 in.)	Within 3 months
------	--------	--	---	-----------------



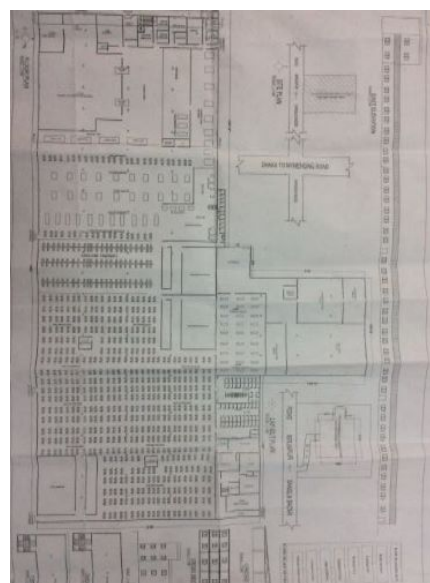


F-21	Egress	A single means of egress is provided from mezzanine where the travel distance is exceeded.	Provide additional means of egress.	Within 3 months
------	--------	--	-------------------------------------	-----------------

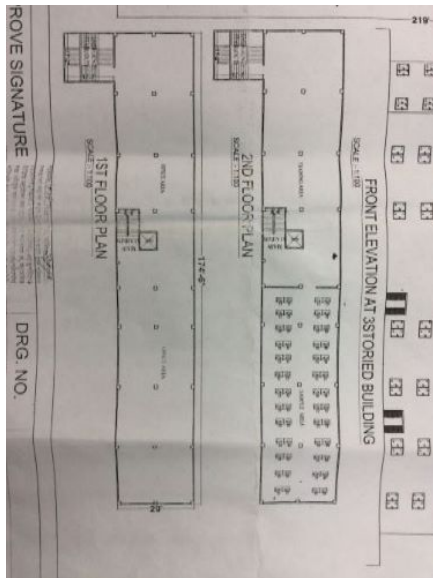


F-22	Egress	Travel distance of egress exceeds limit on ground floor.	Reconfigure the egress arrangement or provide an additional exit to reduce the maximum travel distance to not more than:	Within 3 months
------	--------	--	--	-----------------

45 m (150 ft.) or 60 m (200 ft.) when a complete automatic fire alarm, portable fire extinguishers, and standpipe are present or 122 m (400 ft.) when a complete automatic sprinkler system, automatic fire alarm, portable fire extinguishers, and standpipe are present.



F-23	Egress	The exits are not remotely located from each other such that a single fire event could compromise both exits on the first floor.	Provide additional exit to meet ACCORD standard 6.6.6.	Within 6 months
------	--------	--	--	-----------------



F-24	Fire Protection	The manual fire alarm system is antiquated, not a listed system and does not provide alarm and notification features consistent with acceptable standards.	Replace the manual fire alarm system with a new, listed addressable fire alarm system in accordance with NFPA 72.	Design within 4 months, install within 9 months
------	-----------------	--	---	---



F-25	Fire Protection	Activation of the manual fire alarm system by a manual fire alarm station provides automatic occupant notification only on the floor of alarm and not throughout the building.	Configure the fire alarm system to initiate automatic occupant notification on all floor levels to facilitate whole-building evacuation upon any manual fire alarm station activation.	Within 1 months
------	-----------------	--	--	-----------------



F-26	Fire Protection	Inspection, testing and maintenance of portable fire extinguishers is not in accordance with NFPA 10.	Inspect, test and maintain the portable fire extinguishers and keep written records on-site, in accordance with NFPA 10.	Within 3 months
F-27	Fire Protection	Inspection, testing and maintenance for the fire alarm system is not in accordance with NFPA 72.	Inspect, test and maintain the fire alarm system and keep written records on-site, in accordance with NFPA 72.	Within 3 months
F-28	Fire Protection	Fire department connection is not provided.	Provide fire department connection in accordance with ACCORD standard 5.5.4.	Within 3 months

F-29	Fire Protection	Inspection, testing and maintenance of the standpipe system is not in accordance with NFPA 14.	Inspect, test and maintain the standpipe system and keep written records on-site, in accordance with NFPA 14.	Within 3 months
F-30	Fire Protection	Visible and audible notification was not provided for the building in accordance with NFPA 72.	Provide visible and audible notification for the building in accordance with NFPA 72.	Within 3 months
F-31	Fire Protection	The fire alarm system does not appear to provide adequate audible notification coverage on the first floor.	Provide additional notification appliances such that the fire alarm system is audible throughout the building in accordance with NFPA 72.	Within 6 months
F-32	Fire Protection	The building is equipped with single-station smoke alarms. Smoke alarm activation sounds only a local alarm and does not provide automatic fire alarm notification of occupants.	Remove single-station smoke alarms. Provide automatic smoke detection throughout the building, tied into the fire alarm system, in accordance with NFPA 72.	Within 9 months



F-33	Egress Lighting	Exit signage was not provided at mezzanine floor exit.	Provide exit signs above all building exits to the exterior, all doors to the exit stairs and along all paths of travel where a change of direction is not obvious.	Within 1 month
------	-----------------	--	---	----------------



F-34	Egress Lighting	Exit signage not illuminated at south building exit.	Regularly inspect all exit signage and replace/install lights as needed to illuminate signs. The source of illumination shall provide not less than 50 lux at the illuminated surface with a contrast of not less than 0.5. Approved self luminous signs which provide evenly illuminated letters having a minimum luminance of 0.2 cd/m ² may also be used.	Within 1 month
------	-----------------	--	---	----------------



F-35	Egress Lighting	Inspection, testing and maintenance for the emergency lighting system was not in accordance with The ACCORD standard.	Inspect, test and maintain the emergency lighting system in the accordance with The ACCORD standard. Keep written records on-site.	Within 3 months
------	-----------------	---	--	-----------------

F-36	Egress Lighting	Based on the number and location of emergency lights observed, adequate illumination levels are not anticipated along egress routes on factory floors.	Test the emergency lighting system on each floor and provide additional emergency fixtures to supply adequate illumination along the means of egress. Provide a minimum illumination of 10 lux at the floor level within exit stairs and along exit discharge paths and a minimum 2.5 lux along exit access aisles.	Within 3 months
------	-----------------	--	---	-----------------