

FIRE SAFETY INSPECTION REPORT

ALIZA FASHION LTD.

ACCORD ID: 12187

**CHAYDANA, P.O : NATIONAL UNIVERSITY, GAZIPUR,
BANGLADESH**

**OTHER FACTORIES: ALIZA FASHION TROUSERS LTD
AND ALIZA BLAZER**



ACCORD
on Fire and Building Safety in Bangladesh

The logo of the Bangladesh Accord Foundation is a circular emblem. It features a red silhouette of the map of Bangladesh in the center. The words "Bangladesh Accord" are written in a circular path around the top half of the emblem, and "Foundation" is written around the bottom half.

April 11, 2015

SUMMARY

Aliza Fashion Ltd. was surveyed for fire safety on 4/11/2015 by Jensen Hughes. This summary identifies the major deficiencies that were identified during the inspection.

The purpose of this survey was to identify significant fire safety issues and to provide recommendations for remediation based on applicable standards specified by the Accord. The scope of this initial fire safety inspection was limited to the review and identification of major fire safety issues. The inspection did not include identification of minor deficiencies, which will be further addressed as part of follow-up inspections.

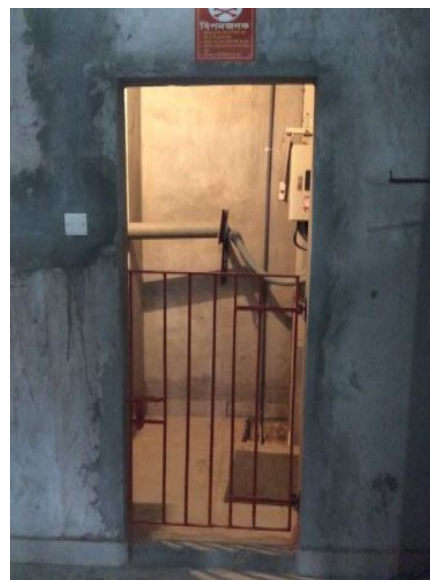
Table 1 summarizes the major fire safety issues identified during the inspection. Recommendations have been provided to address each issue.

An implementation schedule shall be developed by the factory to remediate each of the findings. The specific timing of improvements, including any requested extensions due to design / installation constraints, shall be submitted to the Accord for approval.

Table 1. Findings And Recommendations

No.	Category	Finding	Recommendation	Remediation Timeframe
-----	----------	---------	----------------	-----------------------

F-1	Fire Rated Construction	Unsealed electrical and mechanical shafts are located in the fire-rated floor/ceiling assemblies.	Provide a minimum 2-hr fire-rated shaft to separate the utility risers from each floor level and seal all penetrations in floor/ceiling assemblies to maintain the fire separation.	Within 3 months
-----	-------------------------	---	---	-----------------



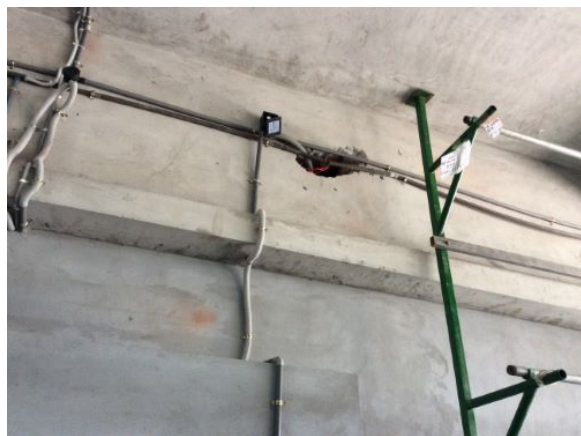


F-2	Fire Rated Construction	The exit stairs are not separated from work areas and other spaces on each floor by fire-rated construction.	Provide minimum 1.5-hr fire rated doors for buildings that are 4 or more stories. Seal all unprotected openings to separate the exit stairs from work areas and other building spaces on all floor levels. Ensure that the fire doors are self-closing and positive latching and that they are provided with fire exit (panic) hardware where serving production floors. If fire doors are required to be held open for functional reasons, provide automatic-closing devices tied to the fire alarm system. Once fire doors are installed, every door in a stair enclosure serving more than 5 stories shall be provided with re-entry unless it meets ACCORD standard 6.8.3.1.	Within 3 months
-----	-------------------------	--	--	-----------------





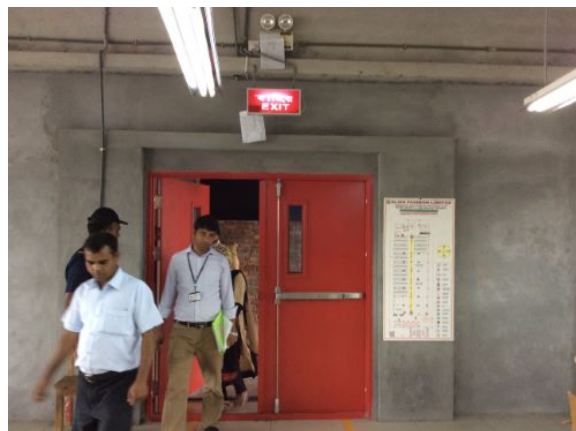
F-3	Fire Rated Construction	Unsealed penetrations and openings are located in east exit stair enclosure.	Seal all penetrations and openings in exit stair enclosure walls to maintain the fire separation.	Within 3 months
-----	-------------------------	--	---	-----------------



F-4	Fire Rated Construction	Electrical panels were located at the east and north west exit stair enclosures.	Remove and re-locate all electrical panels from exit stair enclosures.	Within 3 months
-----	-------------------------	--	--	-----------------



F-5	Fire Rated Construction	Storage boiler rooms discharges directly into east and west exit stair enclosures. Compressor room discharges directly into west exit stair enclosure.	Openings from exit enclosure to storage and utility spaces shall be provided with a vestibule with fire rated construction and openings. Provide a 1.5 hr. fire rated door on the exit stair side and a 1-hr. fire rated door on the storage and compressor room side. Ensure that the fire rating of the vestibule construction matches that of the exit stair enclosure.	Within 3 months
-----	-------------------------	--	---	-----------------



F-6 Fire Rated Construction

The elevator does not have the proper fire rating for the shaft.

Provide the proper 2 hr. fire rating for the shaft.

Within 3 months



F-7	Fire Rated Construction	<p>The boiler room is not separated by fire-rated construction due to openings on the ground floor. The EMR is not separated by fire-rated construction due to openings in the west exit stair enclosure. The compressor room is not separated by fire-rated construction due to openings on the second floor.</p>	<p>Separate the boiler, EMR and compressor room by a minimum 2-hr fire rated construction for high rise. Seal and protect all openings to maintain the required fire separations. When located to the exterior of a building, 3m (10 ft.) separation is required. Provide proper ventilation and consult a qualified engineer.</p>	Within 3 months
-----	-------------------------	--	--	-----------------



F-8	Fire Rated Construction	Areas used for combustible storage open to the factory are not separated by fire-rated construction on fifth floor.	Provide defined storage areas and limit the storage arrangement as follows: - Maximum height of 2.45m (8ft.) and maximum area of 23m ² (250 ft ²) - If sprinkler protected: maximum height of 3.66m (12ft.) and maximum area of 93m ² (305ft ²) Separate areas of unenclosed combustible storage by a minimum clear distance of 3m (10ft.).	Within 3 months
-----	-------------------------	---	--	-----------------



F-9	Fire Rated Construction	Rooms used for combustible storage are not separated by fire-rated construction on ground, fifth and sixth floors.	<p>Provide dedicated storage rooms separated by minimum 1-hr fire-rated construction.</p> <p>Where separate storage rooms are not feasible, provide defined storage areas and limit the storage arrangement as follows:</p> <ul style="list-style-type: none"> - Maximum height of 2.45m (8ft.) and maximum area of 23m² (250 ft²) - If sprinkler protected: maximum height of 3.66m (12ft.) and maximum area of 93m² (305ft²) <p>Separate areas of unenclosed combustible storage by a minimum clear distance of 3m (10ft.).</p>	Within 3 months
-----	-------------------------	--	---	-----------------





F-10	Fire Rated Construction	Existing atrium in factory connecting ground floor, second and third stories is not properly protected.	Provide proper fire protection in accordance with ACCORD standard 3.7.	Within 6 months
------	-------------------------	---	--	-----------------



F-11	Fire Rated Construction	The exit discharge path serving the south west exit is less than 3 m wide and is not separated from the building interior.	Seal all penetrations and openings to the interior of the building along the discharge path, up to a height of 10 ft., to provide a minimum 1-hr fire separation.	Within 6 months
------	-------------------------	--	---	-----------------



F-12	Egress	<p>Building did not have stair designation signs at the exit stairs. Building did not have occupant load signs and emergency evacuation plans at teh factory floors.</p>	<p>Provide stair designation signs, occupant load signs and emergency evacuation plans at required locations.</p>	Immediately
------	--------	---	---	-------------





F-13 Egress

Egress doors with locking features were provided along egress routes. Egress gates with locking features are provided at building exits, exit stairs and along egress routes. All doors were not open and unlocked during the inspection.

Remove locking features from all egress doors and gates.

If locks are required for security reasons, utilize special door locking features complying with NFPA 101 and ACCORD standard 6.8.2.

Immediately





F-14	Egress	Obstructions were located in the egress paths on all the floors and egress court except ground and seventh floors.	Keep egress paths and stairs immediately clear of storage.
------	--------	--	--



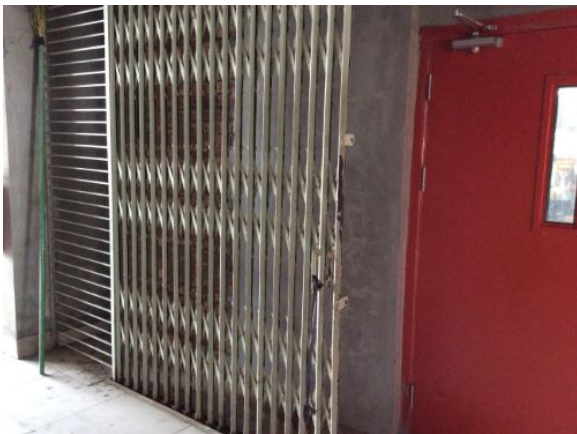


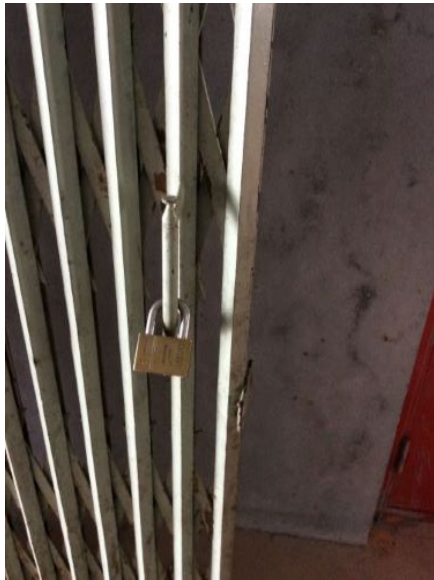
F-15	Egress	Storage was located at all exit stairs.	Remove all storage from exit stairs and egress paths. Immediately
------	--------	---	---





F-16	Egress	Collapsible gates are provided at exit stairs. Sliding doors are provided at exit stairs and along egress routes.	Replace all gates and sliding doors along the means of egress with side-hinged, swinging egress doors in accordance with ACCORD standard 6.8.1.	Within 1 month
------	--------	---	---	----------------





F-17 Egress

The width of egress aisles is less than 36-in. on third, fourth, fifth and sixth floors.

Provide minimum aisle widths of 36-in.

Within 3 months





F-18 Egress

Dead-end aisles exceed 15 m (50 ft.) on second and fifth floors.

Reconfigure the egress arrangement to reduce the maximum dead-end distance to not more than 15 m (50 ft.).

Within 3 months

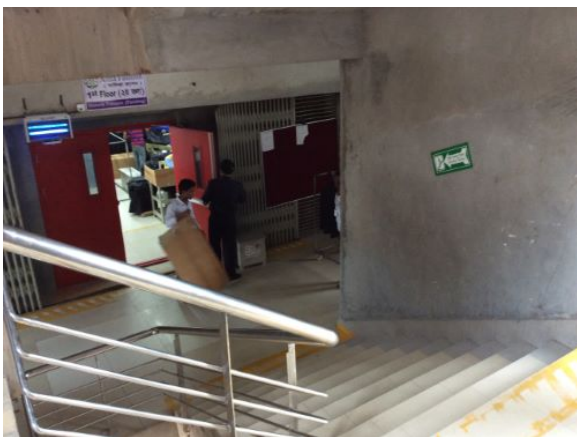
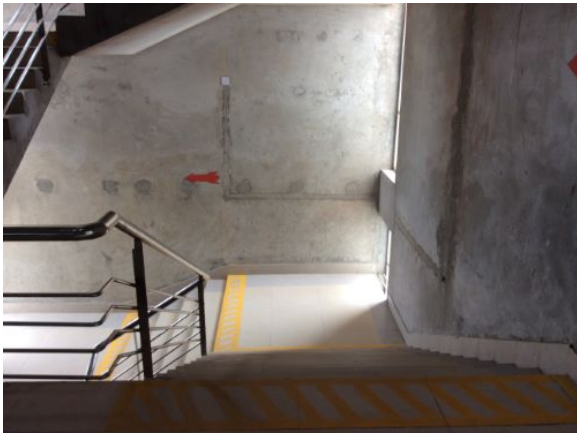


F-19 Egress

Handrails are not provided on both sides of the exit stairs and ramp.

Provide handrails on both sides of the exit stairs and ramp. New handrails shall have a minimum height of 865 mm (34 in.) and a maximum height of 965 mm (38 in.) as measured from the leading edge of the tread. Intermediate handrails shall be provided when the stair width exceeds 2.2 m (87 in.)

Within 3 months



F-20	Fire Protection	The fire alarm system is antiquated, not a listed system and does not provide alarm and notification features consistent with acceptable standards.	Replace the fire alarm system with a new, listed addressable fire alarm system in accordance with NFPA 72.	Design within 4 months, install within 9 months
------	-----------------	---	--	---



F-21	Fire Protection	The high-rise building has an occupied floor greater than 23m (75 ft.) and is not provided with automatic sprinkler protection. The large occupant loads, heavy fuel loading and anticipated extended egress times warrant sprinkler protection.	Provide automatic sprinkler protection throughout the building in accordance with NFPA 13.	Design within 6 months, install within 12 months
------	-----------------	--	--	--

F-22	Fire Protection	The required no smoking signs are not present in the factory.	Smoking is prohibited in any garment factory building or separate storage building. Signs shall be posted in Bengali and English at all building entrances. If the factory creates a designated smoking area outside the building, information of these areas will be posted on the signs.	Within 1 months
------	-----------------	---	--	-----------------



F-23	Fire Protection	Inspection, testing and maintenance of portable fire extinguishers is not in accordance with NFPA 10.	Inspect, test and maintain the portable fire extinguishers and keep written records on-site, in accordance with NFPA 10.	Within 3 months
F-24	Fire Protection	Inspection, testing and maintenance for the fire alarm system is not in accordance with NFPA 72.	Inspect, test and maintain the fire alarm system and keep written records on-site, in accordance with NFPA 72.	Within 3 months
F-25	Fire Protection	Fire department connection is not provided.	Provide fire department connection in accordance with ACCORD standard 5.5.4.	Within 3 months

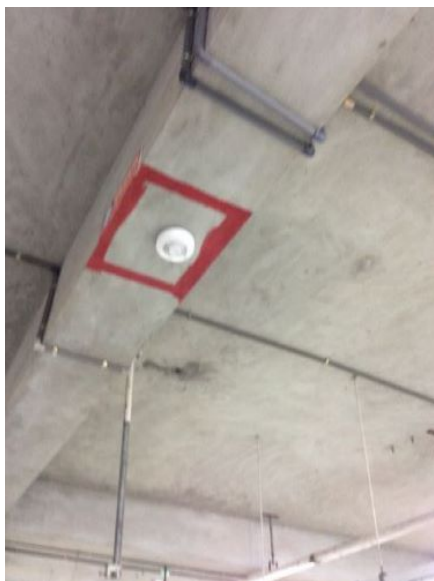
F-26	Fire Protection	Inspection, testing and maintenance of the standpipe system is not in accordance with NFPA 14.	Inspect, test and maintain the standpipe system and keep written records on-site, in accordance with NFPA 14.	Within 3 months
F-27	Fire Protection	Visible notification was not provided for the building in accordance with NFPA 72.	Provide visible notification for the building in accordance with NFPA 72.	Within 3 months





F-28	Fire Protection	The required standpipe system is not installed in accordance with the ACCORD standard.	Install a new standpipe system in accordance with ACCORD standard 5.4 and NFPA 14.	Within 6 months
			<p>A class III system shall be installed in buildings with the highest occupiable floor 10 m (33 ft.) above grade or more. A class I system shall be permitted in buildings protected throughout by an approved automatic sprinkler system.</p>	



F-29	Fire Protection	The building is equipped with single-station smoke alarms. Smoke alarm activation sounds only a local alarm and does not provide automatic fire alarm notification of occupants.	Remove single-station smoke alarms. Provide automatic smoke detection throughout the building, tied into the fire alarm system, in accordance with NFPA 72.	Within 9 months
------	-----------------	--	---	-----------------



F-30	Egress Lighting	Exit signage was not provided above doors to the exit stairs.	Provide exit signs above all building exits to the exterior, all doors to the exit stairs and along all paths of travel where a change of direction is not obvious.	Within 1 month
				
F-31	Egress Lighting	Inspection, testing and maintenance for the emergency lighting system was not in accordance with The ACCORD standard.	Inspect, test and maintain the emergency lighting system in the accordance with The ACCORD standard. Keep written records on-site.	Within 3 months
F-32	Egress Lighting	Based on the number and location of emergency lights observed, adequate illumination levels are not anticipated along egress routes on the factory floors and exit stairs.	Test the emergency lighting system on each floor and provide additional emergency fixtures to supply adequate illumination along the means of egress. Provide a minimum illumination of 10 lux at the floor level within exit stairs and along exit discharge paths and a minimum 2.5 lux along exit access aisles.	Within 3 months

