

FIRE SAFETY INSPECTION REPORT

MOONLIGHT GARMENTS K.B. BAZAR, TARGACH,GAZIPUR, BANGLADESH



ACC  **RD**
on Fire and Building Safety in Bangladesh

March 23, 2014

SUMMARY

Moonlight Garments was surveyed for fire safety on 3/23/2014 by Hughes Associates, Inc. This summary identifies the major deficiencies that were identified during the inspection.

The purpose of this survey was to identify significant fire safety issues and to provide recommendations for remediation based on applicable standards specified by the Accord. The scope of this initial fire safety inspection was limited to the review and identification of major fire safety issues. The inspection did not include identification of minor deficiencies, which will be further addressed as part of follow-up inspections.



Table 1 summarizes the major fire safety issues identified during the inspection. Recommendations have been provided to address each issue.

An implementation schedule shall be developed by the factory to remediate each of the findings. The specific timing of improvements, including any requested extensions due to design / installation constraints, shall be submitted to the Accord for approval.

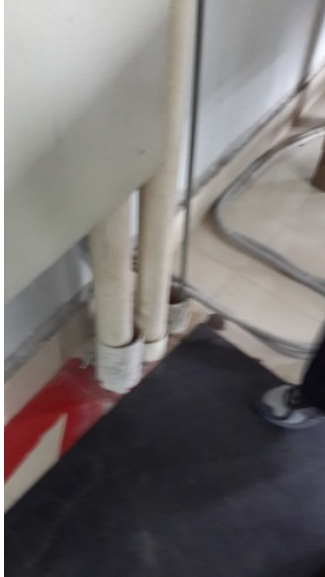
Table 1. Findings And Recommendations

| No. | Category | Finding | Recommendation | Remediation Timeframe |
|-----|-------------------------|---|--|-----------------------|
| F-1 | Fire Rated Construction | Unsealed ceiling penetrations located in the fire command room above the fire alarm control panel. Penetration leads to storage room. | Provide a minimum 2-hr fire-rated shaft to separate the utility risers from each floor level. Seal all penetrations and openings in floor/ceiling assemblies to maintain the fire separation. | Within 1 month |



| | | | | |
|-----|-------------------------|---|--|------------------------|
| F-2 | Fire Rated Construction | <p>Unsealed penetrations and openings are located in exit stair enclosures. Storage rooms were located in the exit stairwells Specifically in the east stairwell sixth floor. Storage rooms were not fully sealed and compromises the stairwell exiting system.</p> | <p>Seal all penetrations and openings in exit stair enclosure walls to maintain the fire separation.</p> | <p>Within 3 months</p> |
| | |  |  | |

| | | | | |
|-----|-------------------------|---|--|------------------------|
| F-3 | Fire Rated Construction | <p>Unsealed penetrations and openings are located in the fire-rated floor/ceiling assemblies. Specifically located at the M/C Bond room and reflected on all floors, penetrations were seen due to electrical wiring.</p> | <p>Provide a minimum 2-hr fire-rated shaft to separate the utility risers from each floor level.</p> | <p>Within 3 months</p> |
| | | <p>Seal all penetrations and openings in floor/ceiling assemblies to maintain the fire separation.</p> | | |



| | | | | |
|-----|-------------------------|---|--|-----------------|
| F-4 | Fire Rated Construction | <p>Areas used for combustible storage are not separated by fire-rated construction.</p> <p>Excess stored boxes were staged outside of storage rooms.</p> <p>However all boxes/storage whether they are rotating storage or not, should be stored inside a proper storage facility/room.</p> | <p>Provide dedicated storage rooms separated by minimum 1-hr fire-rated construction.</p> <p>Where separate storage rooms are not feasible, provide defined storage areas and limit the storage arrangement as follows:</p> <ul style="list-style-type: none"> - Maximum height of 2.4m and maximum area of 23m² - If sprinkler protected: maximum height of 3.66m and maximum area of 93m² <p>Separate areas of unenclosed combustible storage by a minimum clear distance of 3m.</p> | Within 3 months |
|-----|-------------------------|---|--|-----------------|



| | | | | |
|-----|--------|--|---|-----------|
| F-5 | Egress | <p>Egress doors / gates with locking features are provided at building exits, exit stairs, along egress routes, and exit discharge. While most doors in building were fire rated type with panic hardware, some were not. Specifically located on the sixth floor (unoccupied/temporary dining) exit doorways were lockable by pad lock.</p> | <p>Remove locking features from all egress doors / gates.</p> <p>If locks are required for security reasons, utilize special door locking features complying with NFPA 101.</p> | Immediate |
|-----|--------|--|---|-----------|

Moonlight Garments



| | | | | |
|-----|--------|---|---|-----------|
| F-6 | Egress | Located in the south stairwell on ground floor, a snack/drink shop was placed at the bottom of the stairwell. | Remove all storage from exit stairs and egress paths. | Immediate |
|-----|--------|---|---|-----------|



| | | | | |
|-----|-----------------|--|---|-----------|
| F-7 | Fire Protection | In addition to having addressable smoke detectors tied into the fire alarm system, the building is also equipped with single-station smoke alarms. Smoke alarm activation sounds only a local alarm and does not provide automatic fire alarm notification of occupants. | Remove the single-station smoke alarms. | Immediate |
|-----|-----------------|--|---|-----------|



| | | | | |
|-----|-----------------|--|---|-----------------|
| F-8 | Fire Protection | Inspection, testing, and maintenance for the fire alarm system was not in accordance with NFPA 72. | Inspect, test and maintain the fire alarm system, and keep written records on-site, in accordance with NFPA 72. | Within 3 months |
|-----|-----------------|--|---|-----------------|

| | | | | |
|-----|-----------------|---|--|----------------|
| F-9 | Egress Lighting | Manual on-off switch is provided for emergency lighting units. This was reflected on multiple floors throughout the building. | Remove manual on/off switches from emergency lighting units to prevent them from being switched off. | Within 1 month |
|-----|-----------------|---|--|----------------|



| | | | | |
|------|-----------------|--|--|-----------------|
| F-10 | Egress Lighting | Inspection, testing, and maintenance records for the emergency lighting system were not available. | Inspect, test and maintain the emergency lighting system in accordance with The ACCORD standard. Keep written records on-site. | Within 3 months |
| F-11 | Egress Lighting | Based on the number and location of emergency lights observed, adequate illumination levels are not anticipated along egress routes. This was reflected throughout all the floors. | Test the emergency lighting system on each floor and provide additional emergency fixtures to provide adequate illumination along the means of egress. Provide a minimum illumination of 10 lux at the floor level within exit stairs and exit discharge paths and minimum 2.5 lux along exit access aisles. | Within 3 months |