

# **FIRE SAFETY INSPECTION REPORT**

**FAKIR KNITWEARS LTD.  
KAYEMPUR, FATULLAH, NARAYANGANJ**

**OTHER FACTORIES: NONE**



**ACCORD**  
on Fire and Building Safety in Bangladesh

Bangladesh Accord  
Foundation

April 1, 2014

## **SUMMARY**

**Fakir Knitwears Ltd. was surveyed for fire safety on 4/1/2014 by Hughes Associates, Inc. This summary identifies the major deficiencies that were identified during the inspection.**

**The purpose of this survey was to identify significant fire safety issues and to provide recommendations for remediation based on applicable standards specified by the Accord. The scope of this initial fire safety inspection was limited to the review and identification of major fire safety issues. The inspection did not include identification of minor deficiencies, which will be further addressed as part of follow-up inspections.**

**Tables 1 - 5 summarizes the major fire safety issues identified during the inspection. Recommendations have been provided to address each issue.**

**An implementation schedule shall be developed by the factory to remediate each of the findings. The specific timing of improvements, including any requested extensions due to design / installation constraints, shall be submitted to the Accord for approval.**

**Table 1. Findings And Recommendations - Embroidery Building**

No.	Category	Finding	Recommendation	Remediation Timeframe
F-1	Fire Rated Construction	The ground floor boiler and generator/pump rooms are not separated by fire-rated construction from adjacent areas.	Separate the boiler and generator/pump rooms by a minimum 2-hr fire-rated construction. Seal and/or protected all openings to maintain the required fire separations.	Within 3 months

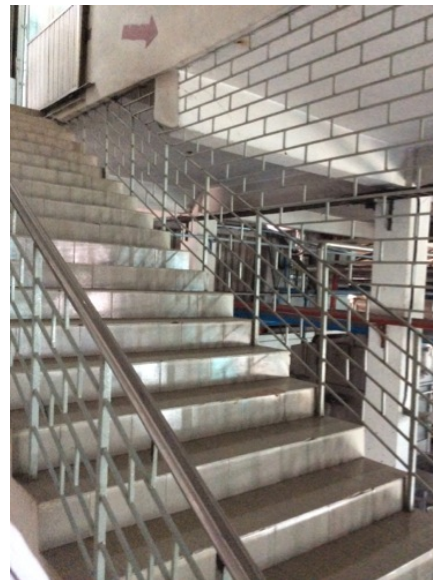


F-2	Fire Rated Construction	Areas on Levels 1-5 used for combustible storage are not separated by fire-rated construction.	<p>Provide dedicated storage rooms separated by minimum 1-hr fire-rated construction.</p> <p>Where separate storage rooms are not feasible, provide defined storage areas and limit the storage arrangement as follows:</p> <ul style="list-style-type: none"><li>- Maximum height of 2.4m and maximum area of 23m<sup>2</sup></li><li>- If sprinkler protected: maximum height of 3.66m and maximum area of 93m<sup>2</sup></li></ul> <p>Separate areas of unenclosed combustible storage by a minimum clear distance of 3m.</p>	Within 3 months
-----	-------------------------	------------------------------------------------------------------------------------------------	-----------------------------------------------------------------------------------------------------------------------------------------------------------------------------------------------------------------------------------------------------------------------------------------------------------------------------------------------------------------------------------------------------------------------------------------------------------------------------------------------------------------------------------	-----------------



F-3	Fire Rated Construction	The exit stairs are not separated from adjacent spaces on each floor by fire-rated construction.	Provide minimum 1.5-hr fire rated doors and seal all unprotected openings to separate the exit stairs from work areas and other building spaces on all floor levels. Ensure that the fire doors are self-closing and positive latching and that they are provided with fire exit (panic) hardware where serving production floors.	Within 3 months
-----	-------------------------	--------------------------------------------------------------------------------------------------	------------------------------------------------------------------------------------------------------------------------------------------------------------------------------------------------------------------------------------------------------------------------------------------------------------------------------------	-----------------

If fire doors are required to be held open for functional reasons, provide automatic-closing devices tied to the fire alarm system.





---

F-4	Fire Rated Construction	Paint storage locations on Levels 3 and 4 not separated by fire-rated construction.	Separate the paint storage in rooms with a minimum 2-hr fire-rated construction. Seal and/or protect all openings to maintain the required fire separations.	Within 3 months
-----	-------------------------	-------------------------------------------------------------------------------------	--------------------------------------------------------------------------------------------------------------------------------------------------------------	-----------------



---

F-5	Fire Rated Construction	Electrical raceways are not contained in utility shafts.	Provide utility shafts or seal all penetrations and openings in floor/ceiling assemblies to maintain the fire separation.	Within 3 months
-----	-------------------------	----------------------------------------------------------	---------------------------------------------------------------------------------------------------------------------------	-----------------



---

F-6	Egress	Egress doors / gates with locking features are provided along egress routes.  Gates/doors were open and unlocked during the inspection.	Remove locking features from all egress doors / gates.  If locks are required for security reasons, utilize special door locking features complying with NFPA 101.	Immediate
-----	--------	-----------------------------------------------------------------------------------------------------------------------------------------------	--------------------------------------------------------------------------------------------------------------------------------------------------------------------------	-----------



---

F-7	Egress	Storage was located in the exit stairs at the ground floor level.	Remove all storage from exit stairs and egress paths.	Immediate
-----	--------	-------------------------------------------------------------------	-------------------------------------------------------	-----------



---

F-8	Egress	Collapsible gates / sliding doors are provided at building exits and exit stairs.	Replace all gates / sliding doors along the means of egress with side-hinged, swinging egress doors.	Within 3 months
-----	--------	-----------------------------------------------------------------------------------	------------------------------------------------------------------------------------------------------	-----------------

If locks are required for security reasons, utilize special door locking features complying with NFPA 101.



---

F-9	Egress	The Level 1 enclosed embroidery area creates a common path of travel distance in excess of 100 ft (30 m).	Reconfigure the egress arrangement to reduce the maximum common path of travel to not more than 30 m.	Within 3 months
-----	--------	-----------------------------------------------------------------------------------------------------------	-------------------------------------------------------------------------------------------------------	-----------------



---

F-10	Egress	The interior exit stair discharges inside the building in the ground floor Dyeing area.	Provide 2-hr fire-rated exit passageway leading directly outside.  - Modify stair to discharge directly outside. - Provide 2-hr fire-rated exit passageway leading directly outside (vestibules to separate any storage areas). - Provide sprinkler protection for discharge floor in accordance with NFPA 13.	Within 6 months
------	--------	-----------------------------------------------------------------------------------------	----------------------------------------------------------------------------------------------------------------------------------------------------------------------------------------------------------------------------------------------------------------------------------------------------------------------------	-----------------



---

F-11	Fire Protection	The fire alarm system is antiquated, not a listed system, and does not provide alarm and notification features consistent with acceptable standards.	Replace the fire alarm system with a new, listed addressable fire alarm system in accordance with NFPA 72.	Design within 4 months, install within 9 months
------	-----------------	------------------------------------------------------------------------------------------------------------------------------------------------------	------------------------------------------------------------------------------------------------------------	-------------------------------------------------



---

F-12	Fire Protection	Inspection, testing, and maintenance for the fire alarm system was not in accordance with NFPA 72.	Inspect, test and maintain the fire alarm system, and keep written records on-site, in accordance with NFPA 72.	Within 3 months
------	-----------------	----------------------------------------------------------------------------------------------------	-----------------------------------------------------------------------------------------------------------------	-----------------

---

F-13	Fire Protection	The building is equipped with single-station smoke alarms. Smoke alarm activation sounds only a local alarm and does not provide automatic fire alarm notification of occupants.	Replace the single-station smoke alarms. Provide automatic detections throughout the building in accordance with NFPA 72.	Within 6 months
------	-----------------	----------------------------------------------------------------------------------------------------------------------------------------------------------------------------------	---------------------------------------------------------------------------------------------------------------------------	-----------------



---

F-14	Egress Lighting	Inspection, testing, and maintenance for the emergency lighting system was not in accordance with The ACCORD standard.	Inspect, test and maintain the emergency lighting system in accordance with The ACCORD standard. Keep written records on-site.	Within 3 months
------	-----------------	------------------------------------------------------------------------------------------------------------------------	--------------------------------------------------------------------------------------------------------------------------------	-----------------

**Table 2. Findings And Recommendations - Warehouse & Knitting**

No.	Category	Finding	Recommendation	Remediation Timeframe
F-1	Fire Rated Construction	The exit stairs are not separated from work areas on each floor by fire-rated construction.	<p>Provide minimum 1.5-hr fire rated doors and seal all unprotected openings to separate the exit stairs from work areas and other building spaces on all floor levels. Ensure that the fire doors are self-closing and positive latching and that they are provided with fire exit (panic) hardware where serving production floors.</p> <p>If fire doors are required to be held open for functional reasons, provide automatic-closing devices tied to the fire alarm system.</p>	Within 3 months



---

F-2	Fire Rated Construction	The elevator hoist-ways are open to the stairwell landings.	Seal all unprotected openings to separate the hoist-ways from the stairwells and other building spaces on all floor levels.	Within 3 months
-----	-------------------------	-------------------------------------------------------------	-----------------------------------------------------------------------------------------------------------------------------	-----------------



---

F-3	Fire Rated Construction	Areas used for combustible storage on Level 2 are not separated from the Knitting area by fire-rated construction.	<p>Provide dedicated storage rooms separated by minimum 1-hr fire-rated construction.</p> <p>Where separate storage rooms are not feasible, provide defined storage areas and limit the storage arrangement as follows:</p> <ul style="list-style-type: none"><li>- Maximum height of 2.4m and maximum area of 23m<sup>2</sup></li><li>- If sprinkler protected: maximum height of 3.66m and maximum area of 93m<sup>2</sup>.</li></ul> <p>Separate areas of unenclosed combustible storage by a minimum clear distance of 3m.</p>	Within 3 months
-----	-------------------------	--------------------------------------------------------------------------------------------------------------------	------------------------------------------------------------------------------------------------------------------------------------------------------------------------------------------------------------------------------------------------------------------------------------------------------------------------------------------------------------------------------------------------------------------------------------------------------------------------------------------------------------------------------------	-----------------



F-4 Egress

Egress doors / gates with locking features are provided at building exits, exit stairs, along egress routes, and means of exit discharge.

Remove locking features from all egress doors / gates.

Immediate

If locks are required for security reasons, utilize special door locking features complying with NFPA 101.

All gates/doors were open and unlocked during the inspection.



---

F-5	Egress	Storage was located in the exit stair.	Remove all storage from exit stairs and egress paths.	Immediate
-----	--------	----------------------------------------	-------------------------------------------------------	-----------

---



---

F-6	Egress	Storage was located in the egress path on Level 1 creating dead-end paths and making it difficult to identify a reliable path to the nearest stairwell.	Establish clearly defined aisles for egress. Provide directional markings and exit signs where exit path is unclear. Keep egress paths and stairs clear of storage.	Immediate
-----	--------	---------------------------------------------------------------------------------------------------------------------------------------------------------	---------------------------------------------------------------------------------------------------------------------------------------------------------------------	-----------

---



---

F-7	Egress	Sliding gates are provided at building exits, exit stairs, and means of exit discharge.	Replace all gates / sliding doors along the means of egress with side-hinged, swinging egress doors.	Within 1 month
-----	--------	-----------------------------------------------------------------------------------------	------------------------------------------------------------------------------------------------------	----------------

If locks are required for security reasons, utilize special door locking features complying with NFPA 101.



---

F-8	Egress	The east exit stairs discharge inside the building through the elevator lobby.	- Modify stair to discharge directly outside.  OR  - Provide 2-hr fire-rated exit passageway leading directly outside.	Within 6 months
-----	--------	--------------------------------------------------------------------------------	------------------------------------------------------------------------------------------------------------------------------------	-----------------



---

F-9	Fire Protection	The fire alarm system is antiquated, not a listed system, and does not provide alarm and notification features consistent with acceptable standards.	Replace the fire alarm system with a new, listed addressable fire alarm system in accordance with NFPA 72.	Design within 4 months, install within 9 months
-----	-----------------	------------------------------------------------------------------------------------------------------------------------------------------------------	------------------------------------------------------------------------------------------------------------	-------------------------------------------------



---

F-10	Fire Protection	Inspection, testing, and maintenance for the fire alarm system was not in accordance with NFPA 72.	Inspect, test and maintain the fire alarm system, and keep written records on-site, in accordance with NFPA 72.	Within 3 months
------	-----------------	----------------------------------------------------------------------------------------------------	-----------------------------------------------------------------------------------------------------------------	-----------------

---

F-11	Fire Protection	The building is equipped with single-station smoke alarms. Smoke alarm activation sounds only a local alarm and does not provide automatic fire alarm notification of occupants.	Replace the single-station smoke alarms. Provide automatic smoke detection throughout the building in accordance with NFPA 72.	Within 6 months
------	-----------------	----------------------------------------------------------------------------------------------------------------------------------------------------------------------------------	--------------------------------------------------------------------------------------------------------------------------------	-----------------



---

F-12	Egress Lighting	Inspection, testing, and maintenance for the emergency lighting system was not in accordance with The ACCORD standard.	Inspect, test and maintain the emergency lighting system in accordance with The ACCORD standard. Keep written records on-site.	Within 3 months
------	-----------------	------------------------------------------------------------------------------------------------------------------------	--------------------------------------------------------------------------------------------------------------------------------	-----------------

**Table 3. Findings And Recommendations - Unit-3 Building**

No.	Category	Finding	Recommendation	Remediation Timeframe
F-1	Fire Rated Construction	The exit stairs are not separated from work areas and storage rooms on each floor by fire-rated construction.	<p>Provide minimum 1.5-hr fire rated doors and seal all unprotected openings to separate the exit stairs from work areas and other building spaces on all floor levels. Ensure that the fire doors are self-closing and positive latching and that they are provided with fire exit (panic) hardware where serving production floors.</p> <p>If fire doors are required to be held open for functional reasons, provide automatic-closing devices tied to the fire alarm system.</p>	Within 3 months



---

F-2	Fire Rated Construction	Unsealed penetrations and openings are located in exit stair enclosures.	Seal all penetrations and openings in exit stair enclosure walls to maintain the fire separation.	Within 3 months
-----	-------------------------	--------------------------------------------------------------------------	---------------------------------------------------------------------------------------------------	-----------------



---

F-3	Egress	Egress doors with locking features are provided at building exits and exit stairs.	Remove locking features from all egress doors / gates including locked doors for storage areas.  If locks are required for security reasons, utilize special door locking features complying with NFPA 101.	Immediate
-----	--------	------------------------------------------------------------------------------------	-------------------------------------------------------------------------------------------------------------------------------------------------------------------------------------------------------------------	-----------



F-4	Egress	Storage was located in the interior exit stair. Electrical equipment and miscellaneous storage were found within the exit stairwells.	Remove all storage from exit stairs and egress paths.  Remove all electrical equipment from the stairwell. Equipment serving the stairwell (lighting, exit signs, etc.) may remain.	Immediate
-----	--------	---------------------------------------------------------------------------------------------------------------------------------------	-------------------------------------------------------------------------------------------------------------------------------------------------------------------------------------------	-----------



---

F-5	Egress	Sliding doors are provided at building exits and along egress routes.	Replace all gates / sliding doors along the means of egress with side-hinged, swinging egress doors.  If locks are required for security reasons, utilize special door locking features complying with NFPA 101.	Within 1 month
-----	--------	-----------------------------------------------------------------------	------------------------------------------------------------------------------------------------------------------------------------------------------------------------------------------------------------------------	----------------



---

F-6	Egress	The interior stair discharges into a covered area between the exterior wall of Unit -3 and the exterior wall of an adjacent building.	Provide 2-hr fire-rated exit passageway leading directly an open-air location. Provide 2-hr vestibules to separate storage areas for the exit discharge path.	Within 3 months
-----	--------	---------------------------------------------------------------------------------------------------------------------------------------	---------------------------------------------------------------------------------------------------------------------------------------------------------------	-----------------



---

F-7	Fire Protection	The fire alarm system is antiquated, not a listed system, and does not provide alarm and notification features consistent with acceptable standards.	Replace the fire alarm system with a new, listed addressable fire alarm system in accordance with NFPA 72.	Design within 4 months, install within 9 months
-----	-----------------	------------------------------------------------------------------------------------------------------------------------------------------------------	------------------------------------------------------------------------------------------------------------	-------------------------------------------------



---

F-8	Fire Protection	Inspection, testing, and maintenance records for the fire alarm system were not available.	Inspect, test and maintain the fire alarm system, and keep written records on-site, in accordance with NFPA 72.	Within 3 months
-----	-----------------	--------------------------------------------------------------------------------------------	-----------------------------------------------------------------------------------------------------------------	-----------------

---

F-9	Fire Protection	The building is equipped with single-station smoke alarms. Smoke alarm activation sounds only a local alarm and does not provide automatic fire alarm notification of occupants.	Replace the single-station smoke alarms. Provide automatic smoke detection throughout the building in accordance with NFPA 72.	Within 6 months
-----	-----------------	----------------------------------------------------------------------------------------------------------------------------------------------------------------------------------	--------------------------------------------------------------------------------------------------------------------------------	-----------------



---

F-10	Egress Lighting	Inspection, testing, and maintenance for the emergency lighting system was not in accordance with The ACCORD standard.	Inspect, test and maintain the emergency lighting system in accordance with The ACCORD standard. Keep written records on-site.	Within 3 months
------	-----------------	------------------------------------------------------------------------------------------------------------------------	--------------------------------------------------------------------------------------------------------------------------------	-----------------

**Table 4. Findings And Recommendations - Eight Storied Production Building**

No.	Category	Finding	Recommendation	Remediation Timeframe
F-1	Fire Rated Construction	<p>Areas used for combustible storage are not separated by fire-rated construction.</p> <p>Ground floor Dyeing/Finishing area and, ground floor, first floor second floor and third floor storage rooms and spaces should have dedicated storage.</p>	<p>Provide dedicated storage rooms separated by minimum 1-hr fire-rated construction.</p> <p>Where separate storage rooms are not feasible, provide defined storage areas and limit the storage arrangement as follows:</p> <ul style="list-style-type: none"> <li>- Maximum height of 2.4m and maximum area of 23m<sup>2</sup></li> <li>- If sprinkler protected: maximum height of 3.66m and maximum area of 93m<sup>2</sup></li> </ul> <p>Separate areas of unenclosed combustible storage by a minimum clear distance of 3m.</p>	Within 3 months



---

F-2	Fire Rated Construction	The exit stairs are not separated from work areas, and other spaces on each floor by fire-rated construction. This was reflected per stairwell throughout the building on each floor.	Provide minimum 1.5-hr fire rated doors and seal all unprotected openings to separate the exit stairs from work areas and other building spaces on all floor levels. Ensure that the fire doors are self-closing and positive latching and that they are provided with fire exit (panic) hardware where serving production floors.	Within 3 months
			If fire doors are required to be held open for functional reasons, provide automatic-closing devices tied to the fire alarm system.	
F-3	Egress	Egress doors / gates with locking features are provided at building exits, exit stairs, along egress routes, and exit discharge.  Sliding/roll-up gates were used throughout all stairwell exit doorways.	Remove locking features from all egress doors / gates.  If locks are required for security reasons, utilize special door locking features complying with NFPA 101.	Immediate

---



F-4 Egress

Storage was located in the exit stair. Storage areas were located on the seventh floor inside the North exit stairwell, and at the South stairwell ground floor.

Remove all storage from exit stairs and egress paths.

Immediate



F-5	Fire Protection	The fire alarm system is antiquated, not a listed system, and does not provide alarm and notification features consistent with acceptable standards.	Replace the fire alarm system with a new, listed addressable fire alarm system in accordance with NFPA 72.	Design within 4 months, install within 9 months
-----	-----------------	------------------------------------------------------------------------------------------------------------------------------------------------------	------------------------------------------------------------------------------------------------------------	-------------------------------------------------



F-6	Fire Protection	The high-rise building has an occupied floor greater than 23m (75 ft) and is not provided with automatic sprinkler protection. The large occupant loads, heavy fuel loading, and anticipated extended egress times warrant sprinkler protection.	Provide automatic sprinkler protection throughout the building in accordance with NFPA 13.	Design within 6 months, install within 12 months
F-7	Fire Protection	Inspection, testing, and maintenance for the fire alarm system was not in accordance with NFPA 72.	Inspect, test and maintain the fire alarm system, and keep written records on-site, in accordance with NFPA 72.	Within 3 months

---

F-8	Fire Protection	The building is equipped with single-station smoke alarms. Smoke alarm activation sounds only a local alarm and does not provide automatic fire alarm notification of occupants.	Replace the single-station smoke alarms. Provide automatic smoke detection throughout the building in accordance with NFPA 72.	Within 6 months
F-9	Egress Lighting	Inspection, testing, and maintenance for the emergency lighting system was not in accordance with The ACCORD standard.	Inspect, test and maintain the emergency lighting system in accordance with The ACCORD standard. Keep written records on-site.	Within 3 months

---

**Table 5. Findings And Recommendations - New Building. (12 stories)**

No.	Category	Finding	Recommendation	Remediation Timeframe
F-1	Fire Rated Construction	Areas used for combustible storage on the 3rd and 7th floor are not separated by fire- rated construction.	<p>Provide dedicated storage rooms separated by minimum 1-hr fire-rated construction.</p> <p>Where separate storage rooms are not feasible, provide defined storage areas and limit the storage arrangement as follows:</p> <ul style="list-style-type: none"> <li>- Maximum height of 2.4m and maximum area of 23m<sup>2</sup></li> <li>- If sprinkler protected: maximum height of 3.66m and maximum area of 93m<sup>2</sup></li> </ul> <p>Separate areas of unenclosed combustible storage by a minimum clear distance of 3m.</p>	Within 3 months



F-2	Fire Rated Construction	The south and east exit stairs are not separated from work areas on each floor and from general storage on ground floor by fire-rated construction.	Provide minimum 1.5-hr fire rated doors and seal all unprotected openings to separate the exit stairs from work areas and other building spaces on all floor levels. Ensure that the fire doors are self-closing and positive latching and that they are provided with fire exit (panic) hardware where serving production floors.	Within 3 months
-----	-------------------------	-----------------------------------------------------------------------------------------------------------------------------------------------------	------------------------------------------------------------------------------------------------------------------------------------------------------------------------------------------------------------------------------------------------------------------------------------------------------------------------------------	-----------------

If fire doors are required to be held open for functional reasons, provide automatic-closing devices tied to the fire alarm system.





---

F-3	Fire Rated Construction	The north and west exit stairs are not separated from work areas on each floor and from general storage on ground floor by fire-rated construction.	Provide minimum 1.5-hr fire rated doors and seal all unprotected openings to separate the exit stairs from work areas and other building spaces on all floor levels. Ensure that the fire doors are self-closing and positive latching and that they are provided with fire exit (panic) hardware where serving production floors.	Within 3 months
			If fire doors are required to be held open for functional reasons, provide automatic-closing devices tied to the fire alarm system.	



---

F-4	Fire Rated Construction	Unsealed penetrations and openings are located in the fire-rated floor/ceiling assemblies on the each floor (southwest corner).	Provide a minimum 2-hr fire-rated shaft to separate the electric shaft from each floor level.	Within 3 months
-----	-------------------------	---------------------------------------------------------------------------------------------------------------------------------	-----------------------------------------------------------------------------------------------	-----------------



---

F-5	Fire Rated Construction	Unsealed penetration (exhaust duct) is located in west exit stair enclosures on the 3rd floor.	Seal all penetrations in exit stair enclosure walls to maintain the fire separation.	Within 3 months
-----	-------------------------	------------------------------------------------------------------------------------------------	--------------------------------------------------------------------------------------	-----------------



---

F-6	Fire Rated Construction	The raised walkway on the 4th floor is constructed with non-fire rated construction.	Provide 2-hr fire-rated construction or Provide minimum 1.5-hr fire rated door.	Within 3 months
-----	-------------------------	--------------------------------------------------------------------------------------	---------------------------------------------------------------------------------	-----------------



---

F-7	Fire Rated Construction	The elevator machine rooms on the top floor are not separated by fire-rated construction (openings and non-rated doors).	Separate the elevator machine rooms by a minimum 2-hr fire-rated construction. Seal and/or protected all openings to maintain the required fire separations	Within 3 months
-----	-------------------------	--------------------------------------------------------------------------------------------------------------------------	-------------------------------------------------------------------------------------------------------------------------------------------------------------	-----------------



F-8 Egress

Egress doors with locking features are provided at building exits and exit stairs.

Remove locking features from all egress doors.

Immediate

If locks are required for security reasons, utilize special door locking features complying with NFPA 101.



---

F-9	Fire Protection	Sprinklers are not provided in the general storage on the ground floor.	Provide automatic sprinkler protection throughout the building in accordance with NFPA 13.	Design within 6 months, install within 12 months
-----	-----------------	-------------------------------------------------------------------------	--------------------------------------------------------------------------------------------	--------------------------------------------------

---



---

F-10	Fire Protection	Inspection, testing, and maintenance for the fire alarm system was not in accordance with NFPA 72.	Inspect, test and maintain the fire alarm system, and keep written records on-site, in accordance with NFPA 72.	Within 3 months
------	-----------------	----------------------------------------------------------------------------------------------------	-----------------------------------------------------------------------------------------------------------------	-----------------

---

---

F-11	Fire Protection	Tamper switches and flow switches are not provided for automatic sprinkler protection system.	All sprinkler control valves, including fire pumps shall be provided with tamper switches that report a supervisory signal to the Fire Alarm Control Panel in accordance with NFPA 13. Additionally, provide water flow switches in accordance with NFPA 13.	Within 6 months
------	-----------------	-----------------------------------------------------------------------------------------------	--------------------------------------------------------------------------------------------------------------------------------------------------------------------------------------------------------------------------------------------------------------	-----------------

---



---

F-12	Egress Lighting	Inspection, testing, and maintenance for the emergency lighting system was not in accordance with The ACCORD standard.	Inspect, test and maintain the emergency lighting system in accordance with The ACCORD standard. Keep written records on-site.	Within 3 months
------	-----------------	------------------------------------------------------------------------------------------------------------------------	--------------------------------------------------------------------------------------------------------------------------------	-----------------