

FIRE SAFETY INSPECTION REPORT

P.M. Knittex (Pvt.) Ltd. -New Building -3-

ACCORD ID: 23881

Chowdhuri bari, Godhnail, Narayangonj, Bangladesh

OTHER FACTORY: P.M. Knittex (Pvt.) Ltd. (AID: 9944)



Inspected By: Md. Anayet Hossain and Sameirah Nasrin Ahsan.

Date: 05 November, 2019

Fire Safety Inspection Report

ELITE GARMENTS INDUSTRIES LTD. (New Building)

Introduction:

P.M. Knittex (Pvt.) Ltd. -New Building -3- was surveyed for fire safety on 05/Nov/2019 by The Accord Inspection Team. The purpose of the survey was to identify significant fire safety issues and to provide recommendations for remediation based on applicable standards specified by the Accord. The scope of this initial fire safety inspection was limited to the review and identification of major fire safety issues. The inspection did not include identification of minor deficiencies, which will be further addressed as part of follow-up inspections.

Limitations:

The information in this fire safety inspection report was obtained during a visit to the facility and during interviews with local factory management. It has not been possible to provide independent verification for all the information and data collected, and therefore, The Accord cannot accept general responsibility for omissions or errors arising from inaccuracies in this report from the information obtained.

The findings and recommendations in this report are not intended to imply, guarantee, ensure or warrant compliance with any government regulations. Additionally, the results do not imply in any way that compliance with the findings or recommendations as stated in this report will eliminate all hazards, risks or exposures or that hazards, risks or exposures not referred to in this report do not exist. Compliance with the findings and recommendations stated in this report does not relieve the factory owner from obligation to comply with specific project requirements, industry standards, or the provisions of any local government regulations.

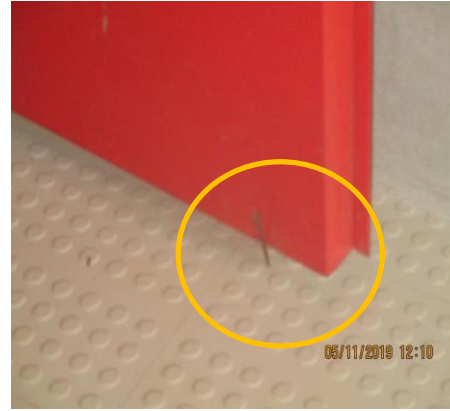


Findings & Recommendations :

The following "Table" summarizes the major fire safety issues identified during the inspection. Recommendations have been provided to address each issue. An implementation schedule shall be developed by the factory to remediate each of the findings. The specific timing of improvements, including any requested extensions due to design / installation constraints, shall be submitted to the Accord for approval.

SI No.	Category	Findings	Required Action	Remediation Time Frame
1	Fire Rated Construction	The exit stairs are not separated from [work areas, other spaces] on each floor by fire rated construction.	<p>Separate the exit stairs from work areas and other building spaces on all floor levels by minimum 2- hr fire-rated construction.</p> <p>Provide minimum 1.5- hr fire rated doors and seal all unprotected openings and penetrations to maintain the fire separation.</p> <p>Ensure that all fire doors are self-closing and positive latching, and are provided with fire exit (panic) hardware where serving production floors or assembly occupancies.</p> <p>If fire doors are required to be held open for functional reasons, provide automatic-closing devices tied to the fire alarm system.</p> <p>Once fire doors are installed, every door in a stair enclosure serving more than 5 stories shall be provided with re-entry unless it meets ACCORD standard 6.8.3.1.</p>	Within 3 months





2	Fire Rated Construction	Penetrations through floor/ceiling assemblies are found unsealed.	Seal all penetrations and openings in the wall of exit enclosure walls (full thickness of the wall) by fire rated materials to maintain the fire resistance rating. Provide a minimum 2-hr fire rated shaft to separate the utility risers from each floor if required.	Within 3 months
---	-------------------------	---	---	-----------------





3	Fire Rated Construction	Storage room discharges directly into the exit stair enclosures. Locations: 1st floor.	Openings from exit enclosure to storage spaces shall be provided with a vestibule with fire rated construction and openings. Provide a 1.5-hr. fire rated door on the exit stair side and a 1-hr. fire rated door on the storage room side. Ensure that the fire rating of the vestibule construction matches that of the exit stair enclosure.	Within 3 months
---	-------------------------	---	--	-----------------



4	Fire Rated Construction	Areas used for combustible storage are not separated by fire rated construction.	<p>Provide dedicated storage rooms separated by minimum 1-hr fire-rated construction.</p> <p>Where separate storage rooms are not feasible, provide defined storage areas and limit the storage arrangement as follows:</p> <ul style="list-style-type: none"> - Maximum height of 2.4m and maximum area of 23m² - If sprinkler protected: maximum height of 3.66m and maximum area of 93m² <p>Separate areas of unenclosed combustible storage by a minimum clear distance of 3m.</p>	Within 3 months
---	-------------------------	--	--	-----------------



5	Fire Rated Construction	Rooms used for combustible storage are not separated by fire rated construction.	Separate the storage room by a minimum 1- hr fire-rated construction. Seal and/or protected all openings to maintain the required fire separations.	Within 3 months
---	-------------------------	--	---	-----------------



6	Fire Rated Construction	The interior exit stair(SW-Stair 3) discharges inside the building in the ground floor.	Provide 2-hr fire-rated exit passageway leading directly outside. - Modify stair to discharge directly outside. - Provide 2-hr fire-rated exit passageway leading directly outside (vestibules to separate any storage areas).	Within 3 months
---	-------------------------	---	--	-----------------



7	Fire Rated Construction	The exit discharge path serving SW exit (from stair 3) is less than 10 ft wide and is not separated from the building interior and surrounding occupancies.	Seal all penetrations and openings to the interior of the building along the discharge path, up to a height of 10 ft., to provide a minimum 1-hr fire separation. Alternatively, provide a second remote discharge path to the public way (only include this if feasible).	Within 3 months
---	-------------------------	---	---	-----------------



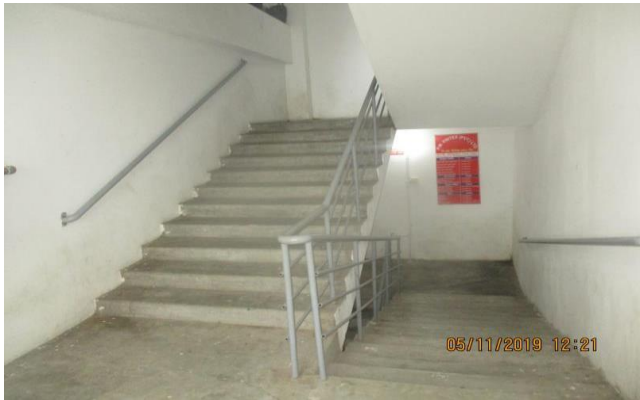
8	Egress	Egress doors/gates with locking features not complying with NFPA101 are provided at [building exits, exit stairs, along egress routes, exit discharge]	<p>Remove all non compliant locking features from egress doors.</p> <ul style="list-style-type: none"> -If locks are required for security reasons, utilize special door locking features complying with NFPA 101. -Doors may be locked where the latch and lock are disengaged with one motion where the occupant load does not exceed 49 persons. -Doors may be provided with locking hardware from the ingress side provided that a panic bar is installed on any door with an occupant load exceeding 49 persons. 	Immediate
---	--------	---	--	-----------



9	Egress	Sliding doors are provided at [building exits, exit stairs, along egress routes, exit discharge]	<p>Replace all collapsible gates/ sliding doors/ rolling shutter doors along the means of egress with side-hinged, swinging egress doors.</p> <p>If locks are required for security reasons, utilize specialized door locking features complying with NFPA101.</p>	Within 1 month
---	--------	--	--	----------------



10	Egress	Width of new exit stair 2 & 3 is less than 1.5 m (60 in.).	Provide minimum clear and unobstructed exit stair widths of 1.5 m(60 in.) in accordance with Accord standard 6.5.6.2.1	Within 3 months
----	--------	--	--	-----------------



11	Egress	Exit stair door/egress door serving 50 or more occupants does not swing in the direction of egress travel. Location: Ground floor (Exit 2/NE exit)	Modify the egress door to swing in the direction of egress travel.	Within 1 month
----	--------	---	--	----------------



12	Egress	The width of egress aisles is less than 36-inch.	Aisles shall be provided with a minimum unobstructed clear-width of 0.9 m (36 in.).	Within 3 months
----	--------	--	---	-----------------



13	Egress	Storage was located in the egress path..	Keep egress path and stair clear of storage	Immediate
----	--------	--	---	-----------





14	Egress	Building did not have stair designation signs at the required locations.	Provide stair designation signs at the required locations.	Within 1 month
15	Parapets or Guards inadequate	Parapets or guards are provided in occupied roof which is less than 42 inch.	Provide parapets or guards with a minimum height of 42 in. for all occupiable roof areas.	Within 2 months
16	Fire Detection and Alarm System	The fire detection system is antiquated, not a listed system, and does not provide alarm and notification features consistent with acceptable standards.	Replace the fire detection system with a new, listed addressable fire detection system in accordance with NFPA 72.	Design within 4 months, Install within 9 months





17	Single Station Smoke detector/alarm	The building is equipped with single-station smoke alarms. Smoke alarm activation sounds only a local alarm and does not provide automatic fire alarm notification of occupant.	Remove single-station smoke alarms. Provide automatic smoke detection throughout the building, tied into the fire alarm system, in accordance with NFPA 72.	Design within 4 months, Install within 9 months
18	Fire Detection and Alarm System-ITM	Inspection, testing, and maintenance (ITM) for the fire detection system is not in accordance with NFPA 72.	Inspect, test and maintain the fire detection system, and keep written records on-site, in accordance with NFPA 72.	Within 10 months



19	Fire Protection	Fire pump, water supply & standpipe system installation requires detailed review to confirm compliance with NFPA 14, 20, 22, 25 and ACCORD standards.	Submit as built drawings, testing records, listing information and other relevant documentation to the ACCORD for review and approval, modification shall have to done as per the reviewed design (if required).	Design within 3 months, Install/Modify within 6 months
----	-----------------	---	--	---




20	Fire Protection (ITM)	Inspection, testing and maintenance of the standpipe system is not in accordance with NFPA 14.	Inspect, test and maintain the standpipe system and keep written records on-site, in accordance with NFPA 14 and ACCORD standards.	Within 7 months
21	Fire Pump ITM	Inspection, testing and maintenance of the fire pump system is not in accordance with NFPA 20.	Inspect, test and maintain the fire pump system and keep written records on-site, in accordance with NFPA 20 and ACCORD standards.	Within 7 months



22	Fire Extinguishers (ITM)	Inspection, testing and maintenance of portable fire extinguishers is not in accordance with NFPA 10.	Inspect, test and maintain the portable fire extinguishers and keep written records onsite, in accordance with NFPA 10 and ACCORD standards.	Within 2 months
23	Emergency Lighting (On/Off Switch)	Manual on-off switch is provided for [emergency lighting / exit signage] units.	Remove manual on/off switches from [emergency lighting /exit signage] units to prevent them from being switched off.	Within 1 month



24	Double sided emergency exit sign	Some lighted exit signs were two-sided, so that they indicated an exit where there were none.	Insure that lighted exit signs are only visible from the side that directs people toward an exit path.	Within 1 month
				
25	Emergency Lighting- ITM	Inspection, testing, and maintenance (ITM) for the emergency lighting system were not in accordance with The ACCORD standard.	Inspect, test and maintain the emergency lighting system in the accordance with The ACCORD standard. Keep written records on-site.	Within 2 months



26	Egress Lighting	Exit sign and Directional Sign are not provided at and towards exit at several floors.	Lighted exit signs shall be placed at entrance to an exit. Additional exit signs shall be placed throughout the facility anywhere the continuation of the egress is not obvious. Lighted exit signs shall be provided with either battery backup or uninterruptable power supply systems and shall be continuously illuminated.	Within 2 months
27	Egress Lighting	Based on the number and location of emergency lights/exit signs observed, adequate illumination levels are not anticipated along egress routes.	Test the emergency lighting system on each floor and provide additional emergency fixtures to provide adequate illumination along the means of egress. Provide a minimum illumination of 10 lux at the floor level within exit stairs and exit discharge paths and minimum 2.5 lux along exit access aisles.	Within 3 months

