

FIRE SAFETY INSPECTION REPORT

**MEEK SWEATER LIMITED
NOOR COMPLEX, AOCHPARA, SATAISH LINK ROAD,
TONGI**

OTHER FACTORIES: NONE



ACCORD
on Fire and Building Safety in Bangladesh

May 17, 2014

SUMMARY

Meek Sweater Limited was surveyed for fire safety on 5/17/2014 by Hughes Associates, Inc. This summary identifies the major deficiencies that were identified during the inspection.

The purpose of this survey was to identify significant fire safety issues and to provide recommendations for remediation based on applicable standards specified by the Accord. The scope of this initial fire safety inspection was limited to the review and identification of major fire safety issues. The inspection did not include identification of minor deficiencies, which will be further addressed as part of follow-up inspections.

Table 1 summarizes the major fire safety issues identified during the inspection. Recommendations have been provided to address each issue.

An implementation schedule shall be developed by the factory to remediate each of the findings. The specific timing of improvements, including any requested extensions due to design / installation constraints, shall be submitted to the Accord for approval.

Table 1. Findings And Recommendations

No.	Category	Finding	Recommendation	Remediation Timeframe
F-1	Fire Rated Construction	Storage rooms used for combustible storage are not separated by fire- rated construction on all floors.	Provide dedicated storage rooms separated by minimum 1-hr fire-rated construction.	Within 3 months



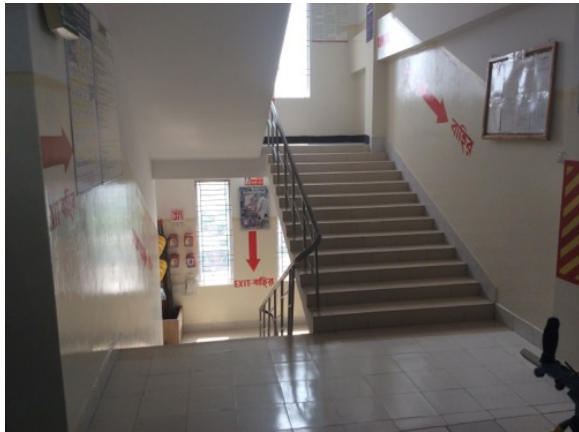


F-2	Fire Rated Construction	The boiler, generator, and transformer on the ground floor and the natural gas dryers on Floor 2 are not separated by fire-rated construction.	Separate the boiler, generator and transformer rooms, as well as the gas dryers by a minimum 2-hr fire-rated construction. Seal and/or protect all openings to maintain the required fire separations	Within 3 months
-----	-------------------------	--	---	-----------------





F-3	Fire Rated Construction	The exit stairs are not separated from work or storage areas on each floor by fire-rated construction.	<p>Provide minimum 1.5-hr fire rated doors and seal all unprotected openings to separate the exit stairs from work areas and other building spaces on all floor levels. Provide vestibules to separate storage areas from egress paths. Ensure that the fire doors are self-closing and positive latching and that they are provided with fire exit (panic) hardware where serving production floors.</p> <p>If fire doors are required to be held open for functional reasons, provide automatic-closing devices tied to the fire alarm system.</p>	Within 3 months
-----	-------------------------	--	--	-----------------



F-4	Fire Rated Construction	Areas used for combustible storage on factory floors are not separated by fire-rated construction on Floors 1-4.	Provide dedicated storage rooms separated by minimum 1-hr fire-rated construction.	Within 3 months
			<p>Where separate storage rooms are not feasible, provide defined storage areas and limit the storage arrangement as follows:</p> <ul style="list-style-type: none"> - Maximum height of 2.4m and maximum area of 23m² - If sprinkler protected: maximum height of 3.66m and maximum area of 93m² 	
			Separate areas of unenclosed combustible storage by a minimum clear distance of 3m.	



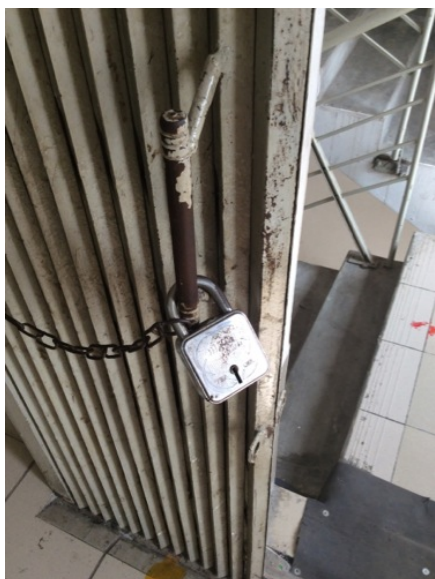
F-5	Fire Rated Construction	Unsealed penetrations and openings are located in the fire-rated elevator shaft.	Seal all penetrations and openings in elevator shaft to maintain the fire separation.	Within 3 months
-----	-------------------------	--	---	-----------------



F-6	Egress	Storage was located in the northeast exit stair at the roof.	Remove all storage from exit stairs and egress paths.	Immediate
-----	--------	--	---	-----------



F-7	Egress	Egress doors / gates with locking features are provided at building exits, exit stairs, and exit discharges on the ground floor. Doors / gates were open and unlocked at time of inspection.	Remove locking features from all egress doors / gates. If locks are required for security reasons, utilize special door locking features complying with NFPA 101.	Immediate
-----	--------	--	--	-----------



F-8	Egress	Storage was located in the egress path on Floor 4.	Keep egress paths and stairs clear of storage.	Immediate
-----	--------	--	--	-----------



F-9	Egress	Collapsible gates are provided at building exits, exit stairs, and at exit discharge at the ground floor.	Replace all gates / sliding doors along the means of egress with side-hinged, swinging egress doors.	Within 1 month
			If locks are required for security reasons, utilize special door locking features complying with NFPA 101.	



F-10	Egress	Balcony on roof is labeled as emergency exit, however there is no exit from the balcony.	Remove emergency exit sign from balcony doorway.	Within 1 month
------	--------	--	--	----------------



F-11	Egress	The width of egress aisles is less than 36-in on Floors 1-6.	Provide minimum aisle widths of 36-in.	Within 3 months
------	--------	--	--	-----------------





F-12 Egress

Handrails are not provided in the northwest exit stair.

Provide handrails on at least one side of exit stair.

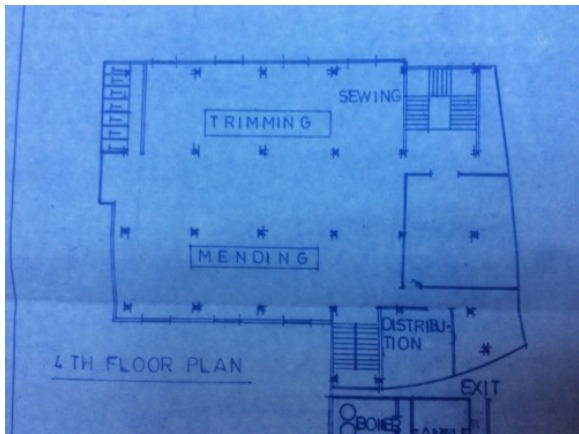
Within 3 months



F-13	Egress	All exit stairs discharge inside the building in the parking area.	Provide 2-hr fire-rated exit passageway leading directly outside (vestibules to separate any storage areas). -OR- Provide sprinkler protection for discharge floor in accordance with NFPA 13.	Within 6 months
------	--------	--	--	-----------------



F-14	Egress	The exit stairs are not remotely located from each other such that a single fire event could compromise both exits on all floor.	Provide additional exit(s). -OR- Provide sprinkler protection in accordance with NFPA 13.	Within 6 months
------	--------	--	---	-----------------



F-15	Fire Protection	Inspection, testing, and maintenance for the fire alarm system was not in accordance with NFPA 72.	Inspect, test and maintain the fire alarm system, and keep written records on-site, in accordance with NFPA 72.	Within 3 months
------	-----------------	--	---	-----------------



F-16	Egress Lighting	Double-sided exit signs located at exit stairs on some floors.	Change exit signs to one-sided signs that only direct egress into stairwells.	Within 1 month
------	-----------------	--	---	----------------



F-17	Egress Lighting	Inspection, testing, and maintenance for the emergency lighting system was not in accordance with The ACCORD Standard.	Inspect, test and maintain the emergency lighting system in accordance with The ACCORD standard. Keep written records on-site.	Within 3 months
------	-----------------	--	--	-----------------



F-18	Egress Lighting	Based on the number and location of emergency lights observed, adequate illumination levels are not anticipated along egress routes on all floors.	Test the emergency lighting system on each floor and provide additional emergency fixtures to provide adequate illumination along the means of egress. Provide a minimum illumination of 10 lux at the floor level within exit stairs and exit discharge paths and minimum 2.5 lux along exit access aisles.	Within 3 months
------	-----------------	--	--	-----------------

