

FIRE SAFETY INSPECTION REPORT

PACIFIC CASUALS LTD.

ACCORD ID: 23763

Plot: 31-32, Sector: 1, CEPZ, Chattogram, Bangladesh
(22.292645, 91.774568)

OTHER FACTORY (S): NONE



Inspected By: Dilip Kumar Mondal & Md. Ferdaus Jaman

Date: 05 August, 2019

Findings & Recommendations :

Table 1 summarizes the major fire safety issues identified during the inspection. Recommendations have been provided to address each issue. An implementation schedule shall be developed by the factory to remediate each of the findings. The specific timing of improvements, including any requested extensions due to design/ installation constraints, shall be submitted to the Accord for approval.

Table-1:

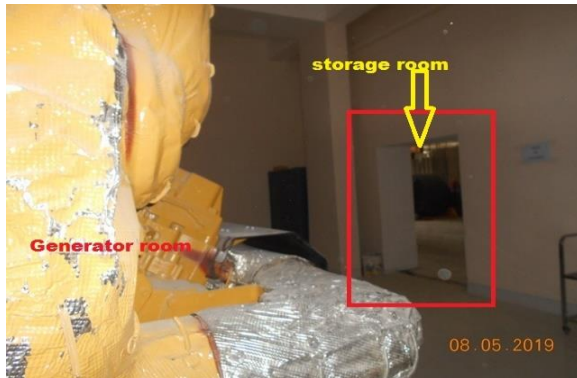
SI No.	Category	Findings	Required Action	Remediation Time Frame
F-1	Fire Rated Construction	Exit stairs are not separated from work areas & other spaces by fire-rated construction due to unprotected openings and penetrations. Location: basement & stair-4 on 1st & 2nd floors.	Provide minimum 1.5-hr fire rated doors and seal all unprotected openings to separate the exit stairs from work areas and other building spaces on all floor levels. Ensure that the fire rated doors are self-closing and positive latching and that they are provided with fire exit (panic) hardware where serving production floors. If fire rated doors are required to be held open for functional reasons, provide automatic closing devices tied to the fire alarm system. Once fire doors are installed, every door in a stair enclosure serving more than 5 stories shall be provided with re-entry unless it meets ACCORD standard 6.8.3.1	Within 6 months



Accord - Bangladesh RMG Fire Safety Inspection



F-2	Fire Rated Construction	<p>Room used for combustible storage is not separated by fire rated construction(opening) on ground floor.</p> <p>Location: between storage room & utility (generator room)</p>	Provide dedicated storage room separated by minimum 1-hr fire-rated construction.	Within 3 months
-----	-------------------------	--	---	-----------------



Accord - Bangladesh RMG Fire Safety Inspection

F-3	Fire Rated Construction	<p>Areas used for combustible storage are not separated by fire rated construction. Location: 2nd floor.</p>	<p>Provide dedicated storage rooms separated by minimum 1-hr fire-rated construction. Where separate storage rooms are not feasible, provide defined storage areas and limit the storage arrangement as follows: - Maximum height of 2.4m and maximum area of 23m² - If sprinkler protected: maximum height of 3.66m and maximum area of 93m² Separate areas of unenclosed combustible storage by a minimum clear distance of 3m.</p>	Within 3 months
-----	-------------------------	--	---	-----------------



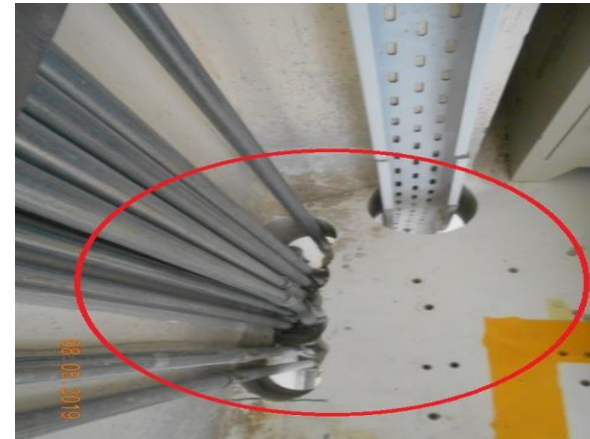
F-4	Fire Rated Construction	<p>Unsealed penetrations and openings are located in the exit stair enclosures.</p>	<p>Seal all penetrations and openings in exit stair enclosure walls to maintain the fire separations.</p>	Within 3 months
-----	-------------------------	---	---	-----------------



Accord - Bangladesh RMG Fire Safety Inspection



F-5	Fire Rated Construction	Unsealed penetrations and openings are located in the fire rated floor/ceiling assemblies. Location: Electrical & mechanical shafts.	Seal all penetrations and openings in floors/ceiling assemblies to maintain the fire separation.	Within 3 months
-----	-------------------------	--	--	-----------------



Accord - Bangladesh RMG Fire Safety Inspection

F-6	Fire Rated Construction	The elevator [two no's] discharges inside the production floor.	<p>Provide a minimum 2-hr fire rated construction to separate the elevator shaft from each floor level. Seal all penetrations and openings in floors/ceiling assemblies to maintain the fire separation.</p> <p>Or</p> <p>Submit proper certifications for installed elevator doors to the ACCORD for approval. If not available, or certification is not approved, install new, properly certified fire rated doors in accordance with ACCORD direction.</p>	Within 3 months
-----	-------------------------	---	---	-----------------



Accord - Bangladesh RMG Fire Safety Inspection

F-7	Fire Rated Construction	<p>The[boiler/generator/transformer/air compressor] room is not separated by fire rated construction (openings & penetrations) Location: On ground floor between sub-station & compressor room (1st floor), generator to storage room, door co-ordinator missing for boiler to generator room.</p>	<p>Specify appropriate upgrade based on conditions: -Separate the boiler room by a minimum 2-hr fire rated construction (for high rise building)/ 1-hr fire rated construction (for low rise building). Seal and/or protected all openings to maintain fire separations. -Separate the [generator/transformer/EMR/gas meter/air compressor] room by a minimum 2-hr fire rated construction. Seal and/or protected all openings to maintain fire separations.</p>	Within 3 months
-----	-------------------------	---	--	-----------------



F-8	Egress	<p>Storage was located in the exit stair-3. Location: 4th & ground floors.</p>	Remove storage from the exit stairs and egress path	Immediate
-----	--------	--	---	-----------



Accord - Bangladesh RMG Fire Safety Inspection



F-9	Egress	Storage located in the dining area. Location: 7th floor.	Remove storage from the dining area.	Immediate
-----	--------	--	--------------------------------------	-----------



F-10	Egress	Exit stairs do not discharge directly to the outside. Location: East side stairs 3 &4.	Specify appropriate upgrade based on conditions: -Modify stair to discharge directly outside. -Provide 2-hr fire rated exit passageway leading directly outside (vestibules to separate any storage area).	Within 6 months
------	--------	--	---	-----------------



Accord - Bangladesh RMG Fire Safety Inspection



F-11	Fire Detection and Alarm System	Automatic fire alarm & detection system installation requires detailed review to confirm compliance with NFPA 72 and ACCORD standards.	Submit the as-built design of fire alarm system to Accord in accordance with NFPA 72. Installation shall be as per the reviewed design with a listed Addressable Fire Alarm System.	Within 3 months
------	---------------------------------	--	--	-----------------



Accord - Bangladesh RMG Fire Safety Inspection

F-12	Fire Protection System	The high-rise building has an occupied floor greater than 23 meter (75 feet). Combined sprinkler system installation is going on (basement, ground, 1st & 7th floors)& it requires detailed review to confirm compliance with NFPA 13 & 14 and ACCORD standards.	Submit the as-built design of combined sprinkler system to Accord in accordance with NFPA 13&14. Installation shall be as per the reviewed design with a listed equipment's.	Within 6 months
------	------------------------	---	--	-----------------



F-13	Fire Protection System	Fire pump installation requires detailed review to confirm compliance with NFPA 20 and ACCORD standards.	Submit the as-built design of fire pump system to Accord in accordance with NFPA 20. Installation shall be as per the reviewed design with a listed equipment's.	Within 3 months
------	------------------------	--	--	-----------------



Accord - Bangladesh RMG Fire Safety Inspection



F-14	Fire Detection and Alarm System-ITM	Inspection, testing, and maintenance (ITM) for the fire detection system is not in accordance with NFPA 72.	Inspect, test and maintain the fire detection system, and keep written records on-site, in accordance with NFPA 72.	Within 3 months
F-15	Fire Protection System (ITM)	Inspection, testing, and maintenance of the automatic sprinkler, standpipe & fire pump are not in accordance with NFPA 25.	Inspect, test and maintain the automatic sprinkler, standpipe & fire pump system, and keep written records on-site, in accordance with NFPA 25.	Within 3 months
F-16	Fire Extinguishers (ITM)	Inspection, testing and maintenance of portable fire extinguishers is not in accordance with NFPA 10.	Inspect, test and maintain the portable fire extinguishers and keep written records onsite, in accordance with NFPA 10 and ACCORD standards.	Within 3 months
F-17	Inadequate Lighting	Based on the number and location of emergency lights/exit signs observed, adequate illumination levels are not anticipated along egress routes. Location: All floors.	Test the emergency lighting system on each floor and provide additional emergency fixtures to provide adequate illumination along the means of egress. Provide a minimum illumination of 10 lux at the floor level within exit stairs and exit discharge paths and minimum 2.5 lux along exit access aisles.	Within 3 months



Accord - Bangladesh RMG Fire Safety Inspection



F-18	Egress exit sign	Exit sign not provided at exit. Location: 7th floor & utility area.	Provide exit signs above all exits to the exterior and all doors to the exit stair.	Within 1 month
------	------------------	---	---	----------------



F-19	Directional Exit Sign	The directional signs are not provided where there is a change in direction and where the continuation of the egress path is not obvious. Location: All floors.	Install illuminated directional signs shall be provided where there is a change in the direction for the path of travel and the direction to an exit is not obvious.	Within 1 month
------	-----------------------	---	--	----------------



Accord - Bangladesh RMG Fire Safety Inspection



F-20	Non-Working Exit Signs	Exit signage not illuminated (burned out, broken, etc.). Location: stair-1 on 3rd floor.	Regularly inspect all exit signage and replace/install lights as needed to illuminate signs	Within 1 month
------	------------------------	---	---	----------------



Accord - Bangladesh RMG Fire Safety Inspection

F-21	Emergency Lighting- ITM	Inspection, testing, and maintenance (ITM) for the emergency lighting system were not in accordance with The ACCORD standard.	Inspect, test and maintain the emergency lighting system in the accordance with The ACCORD standard. Keep written records on-site.	Within 3 months
------	-------------------------	---	---	-----------------

