

Chowgacha Fashions Ltd

Koir Para, Chowgacha, Jessore, Bangladesh
(23.255935N, 89.037443E)

22nd February 2015



Observations

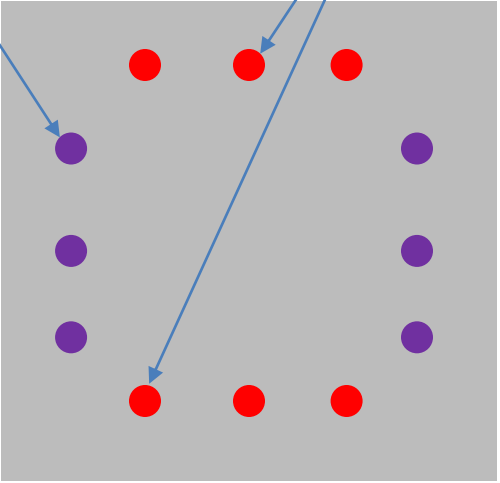
Observations Building 1

Actual reinforcement in Column C4 on gridline E/4 appears less than designed. – Ferroscan detected 3 bars on east and west face of column

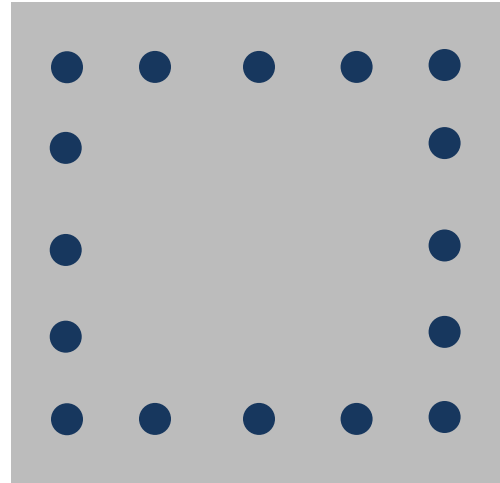
Observations Building 1

**3 No. 20dia
(purple) bars
assumed**

**3 No. 20dia (red) bars found
on east and west face**



**12 No. 20dia used
for design check**

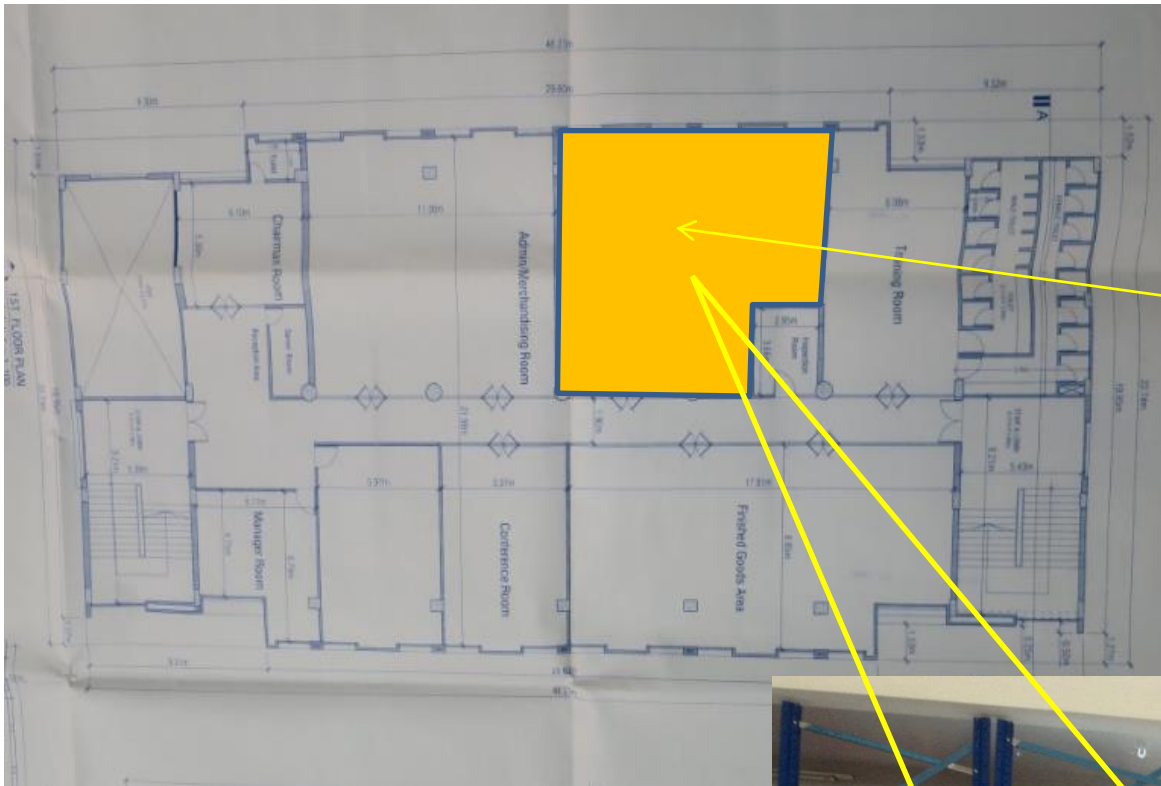


**16 No. 20dia shown
On drawings**

Observations Building 1

Accessories store: Storage racking in this area to be checked for compliance with original design loads

Observations Building 1



**Accessories store
Loading on the area
should be assessed
by engineer to
ensure compliance
with original design**



Observations Building 1

Item No.	Observation	Recommended Action Plan	Recommended Timeline
1	Reinforcement in Column C4 on gridline E/4 appears less than designed	Factory Engineer to clarify quantity of reinforcement in column C4 on gridline E/4 between Ground and 1st Floor.	6-weeks
2	Reinforcement in Column C4 on gridline E/4 appears less than designed	If less than 16 bars are found all other columns to be checked and calculations carried out to confirm adequacy of columns with reduced reinforcement.	6-weeks
3	Accessory Store (1st Floor) - Storage racking in this area.	Accessory Store (1st Floor) - Storage racking in this area to be checked for compliance with original design loads. Design load to be displayed in area.	6-weeks