

Sirajgonj Fashions Ltd.

101/01/A, Barabagh, Mirpur-2, Dhaka – 1216, Mirpur, Dhaka, Bangladesh.
(23.803278N, 90.364693E)

18th February 2015



Observations

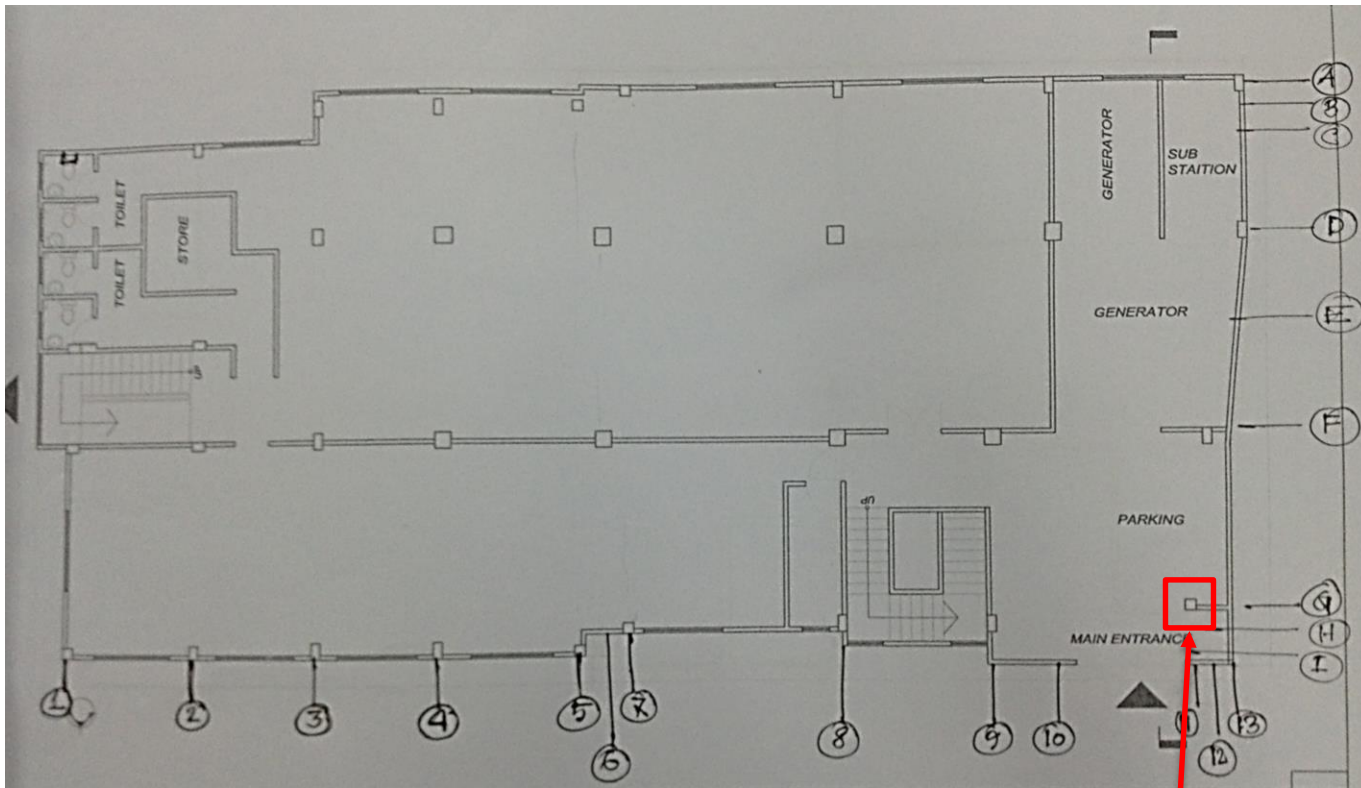
Unbraced brick walls at 5th floor level



Unbraced perimeter brick walls at 5th floor level

Observations

High Punching Shear Stress Level at Corner Column

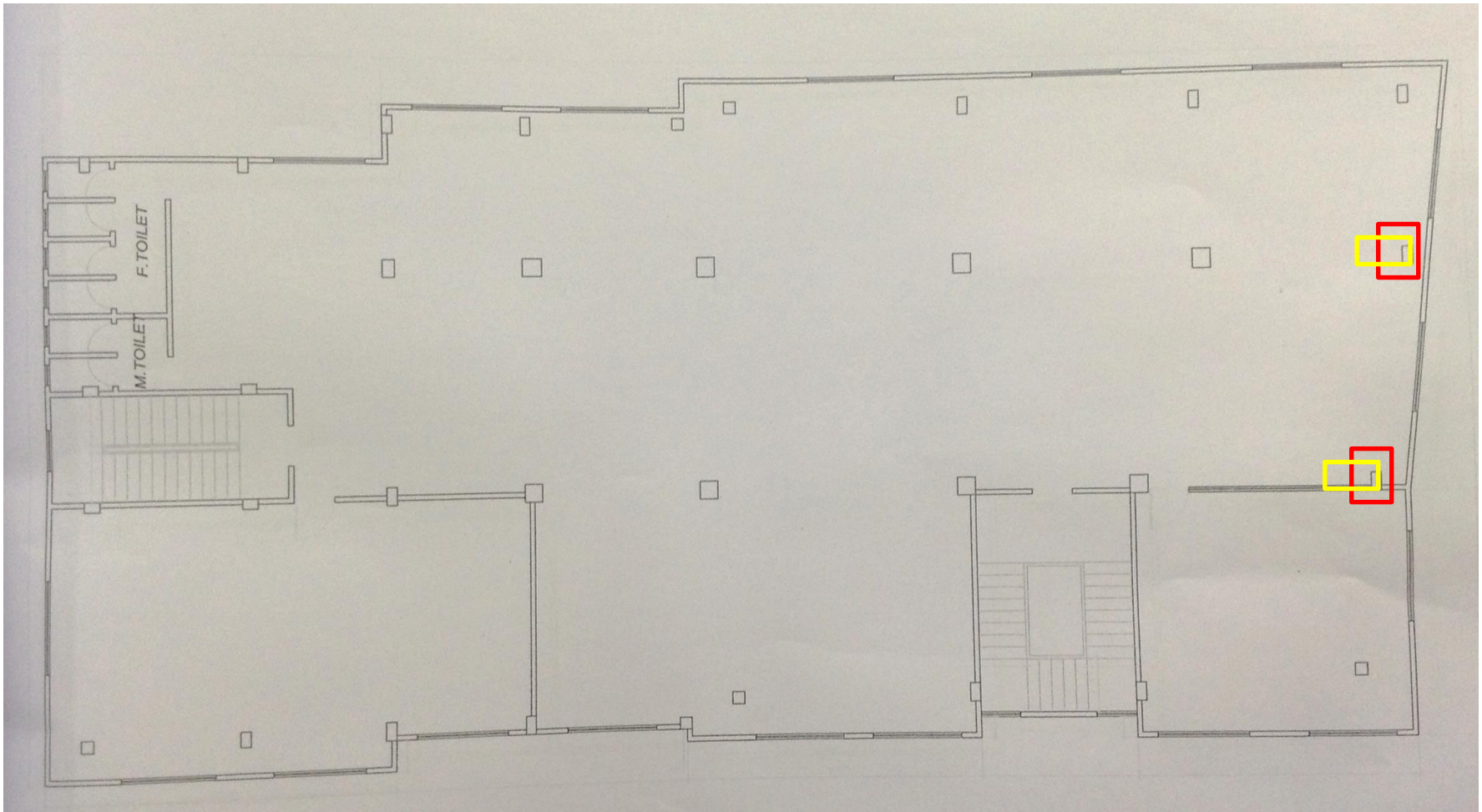


2nd Floor Plan

High punching shear level at the column near toilet

Observations

Discrepancies between site observations and information on drawings



Alignments of columns in drawings



Alignments alignment of columns observed on site

Most column dimensions are different on site from drawings.

Observations

Apparently non engineered roof structures



Apparently non engineered roof structures used for prayer rooms

Observations

Priority Actions

Problems Observed

ITEM 1: Unbraced perimeter wall at 5th floor level

ITEM 2: High Punching Shear Stress at corner column

ITEM 3: Discrepancies between site observations and information on drawings

ITEM 4: Apparently non engineered roof structures

Item No.	Observation	Recommended Action Plan	Recommended Timeline
1	Unbraced perimeter walls at 5th floor level	Factory Engineer to check brick wall stability and devise appropriate action.	6-weeks
2	Unbraced perimeter walls at 5th floor level	Implement recommended actions	6-weeks
3	High Punching Shear Stress	Factory Engineer to review design, loads and slab stresses in area identified above. In situ concrete strength to be verified by taking 4 No 100 dia cores.	6-weeks
4	High Punching Shear Stress	Factory Engineer propose & implement remedial actions as appropriate	6-weeks
5	High Punching Shear Stress	Actively manage a loading plan for all floor plates within the factory giving consideration to floor capacity and column capacity.	6-months
6	Discrepancies between site observations and information on drawings	Factory Engineer to update the drawings to "as-constructed" status to reflect the actual column dimensions and alignments.	6-weeks
7	Discrepancies between site observations and information on drawings	Column capacity checks to be undertaken if columns smaller than designed.	6-weeks
8	Apparently non-engineered Roof Structure	Factory engineer to check the capacity of the lightweight roof and make any necessary alterations.	6-months