

Sabah Designers Ltd.

South Panishail, Kashimpur, Gazipur, Dhaka, Bangladesh.
(23.987508N, 90.307459E)

17th February 2015



Observations

Temporary water tanks on existing roof (new 3rd floor)



3 temporary storage tanks on the roof (2 x 1500 litres and 1 x 2000 litres)

Overloading on 1st floor

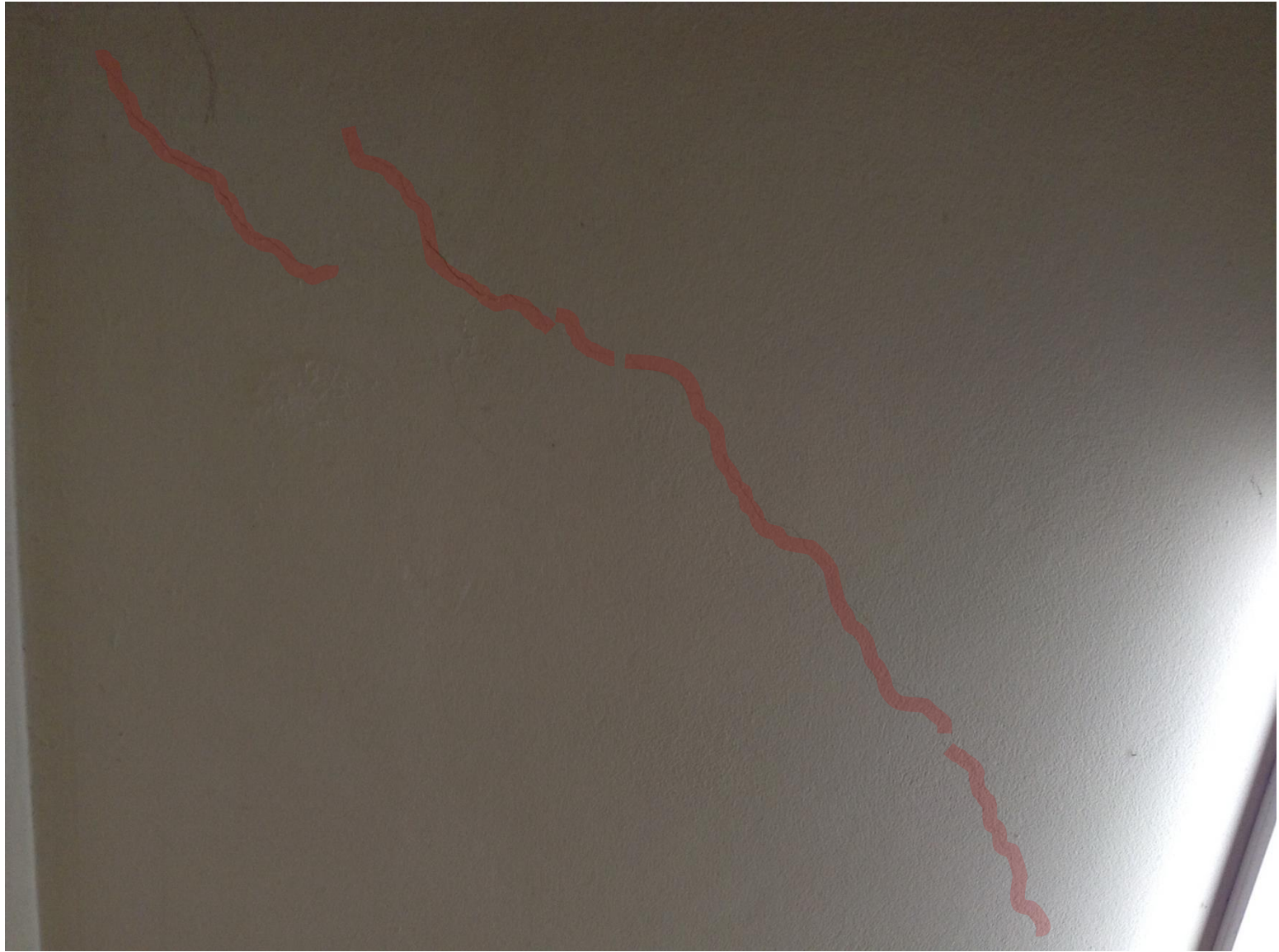


Heavy loads, approximately 5kPa to 8kPa observed on 1st floor

Beam and Slab Cracking



Minor cracks observed in 1st and 2nd floor beams



Minor cracks observed in 2nd floor slab

Cracking in lintel over opening at Ground Floor



Cracking in the lintel over the door observed

Priority Actions

Problems Observed

ITEM 1: Temporary water tanks on existing roof (new 3rd floor)

ITEM 2: Excess loading on suspended floors

ITEM 3: Beam and slab cracking

ITEM 4: Cracked concrete lintel over ground floor opening

Item No.	Observation	Recommended Action Plan	Recommended Timeline
1	Temporary water tanks on Existing Roof (new 3rd floor)	Factory Engineer to verify design of supporting beams/slab and columns under temporary water tanks.	6-weeks
2	Excess loading on suspended floors	Factory Engineer to remove excess loading on suspended floors. Factory Engineer to develop loading plan for floors to avoid such overloading in future.	6-weeks
3	Excess loading on suspended floors	Continue to implement loading plan	6-months
4	Beam and slab cracking	Factory Engineer to investigate cracking on underside of 1st and 2nd floor slabs, and carry out any necessary structural remedial works, if required.	6-weeks
5	Beam and slab cracking	Factory Engineer to continuously monitor cracking visible on underside of slab, and sides and bottom of beams.	6-months
6	Cracked concrete lintel over ground floor opening	Factory Engineer to check design of cracked concrete lintel over door opening, and repair/replace as necessary	6-months