

# **FIRE SAFETY INSPECTION REPORT**

## **ETTADE JEANS LTD.**

**1670/2091, BUILDING NO 03, WEST SHOLOSHAHR,  
ATURAR DEPOT, PANCHLAISH, CHITTAGONG.**

**OTHER FACTORIES: ETTADE PACKAGING, ETTADE  
EMBROIDERY**



**ACCORD**  
on Fire and Building Safety in Bangladesh

May 8, 2014

## **SUMMARY**

**Ettade Jeans Ltd. was surveyed for fire safety on 5/8/2014 by Hughes Associates, Inc. This summary identifies the major deficiencies that were identified during the inspection.**

**The purpose of this survey was to identify significant fire safety issues and to provide recommendations for remediation based on applicable standards specified by the Accord. The scope of this initial fire safety inspection was limited to the review and identification of major fire safety issues. The inspection did not include identification of minor deficiencies, which will be further addressed as part of follow-up inspections.**

**Table 1 summarizes the major fire safety issues identified during the inspection. Recommendations have been provided to address each issue.**

**An implementation schedule shall be developed by the factory to remediate each of the findings. The specific timing of improvements, including any requested extensions due to design / installation constraints, shall be submitted to the Accord for approval.**

**Table 1. Findings And Recommendations**

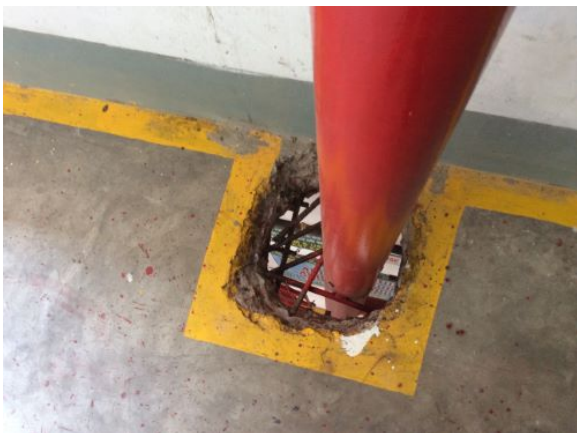
No.	Category	Finding	Recommendation	Remediation Timeframe
F-1	Fire Rated Construction	The exit stairs were not separated from work areas on each floor by fire-rated construction.	<p>Provide minimum 1.5-hr fire rated doors and seal all unprotected openings to separate the exit stairs from work areas and other building spaces on all floor levels. Ensure that the fire doors are self-closing and positive latching and that they are provided with fire exit (panic) hardware where serving production floors.</p> <p>If fire doors are required to be held open for functional reasons, provide automatic-closing devices tied to the fire alarm system.</p>	Within 3 months





---

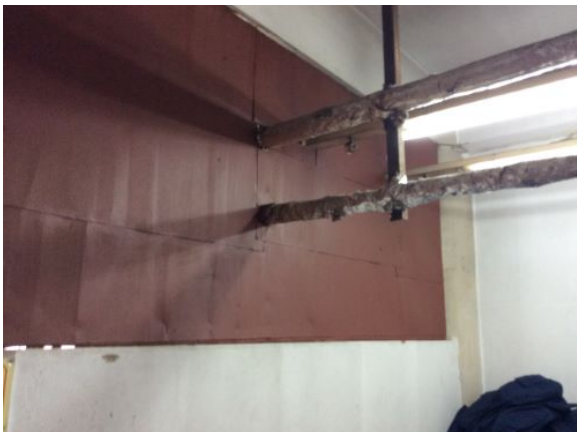
F-2	Fire Rated Construction	Unsealed penetrations and openings were located in the fire-rated floor and ceiling assemblies.	Provide a minimum 2-hr fire-rated shaft to separate the utility risers from each floor level.	Within 3 months
			Seal all penetrations and openings in floor/ceiling assemblies to maintain the fire separation.	





---

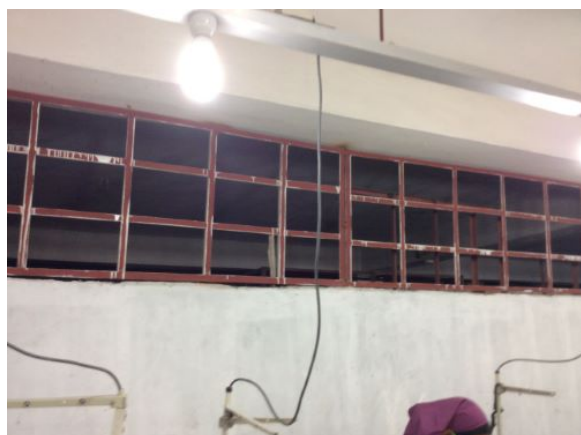
F-3	Fire Rated Construction	The boiler, generator and transformer rooms were not separated by fire-rated construction from the third floor, North and West exit stair discharges.	Separate the boiler, generator and transformer rooms by a minimum 2-hr fire-rated construction. Seal and protect all openings to maintain the required fire separations	Within 3 months
-----	-------------------------	---	---	-----------------





---

F-4	Fire Rated Construction	Areas used for combustible storage were not separated by fire-rated construction on all the floors except first, second and sixth floor.	Provide dedicated storage rooms separated by minimum 1-hr fire-rated construction.  Where separate storage rooms are not feasible, provide defined storage areas and limit the storage arrangement as follows: - Maximum height of 2.4m and maximum area of 23m <sup>2</sup> - If sprinkler protected: maximum height of 3.66m and maximum area of 93m <sup>2</sup>  Separate areas of unenclosed combustible storage by a minimum clear distance of 3m.	Within 3 months
-----	-------------------------	--	--	-----------------



---

F-5	Fire Rated Construction	Unsealed penetrations and openings were located in exit stair enclosures.	Seal all penetrations and openings in exit stair enclosure walls to maintain the fire separation.	Within 3 months
-----	-------------------------	---	---	-----------------



---

F-6	Fire Rated Construction	Hazardous materials and flammable liquid storage area was not separated by fire-rated construction from the generator.	Separate the hazardous materials and flammable liquid storage room by a minimum 2-hr fire-rated construction. Seal and protect all openings to maintain the required fire separations.	Within 3 months
-----	-------------------------	--	--	-----------------





---

F-7	Fire Rated Construction	The exit discharge path serving West exit was less than 10 ft wide and was not separated from the building interior.	Seal all penetrations and openings to the interior of the building along the discharge path, up to a height of 10 ft., to provide a minimum 1-hr fire separation.	Within 6 months
F-8	Egress	Egress doors and gates with locking features were provided along egress routes, exit stairs, exit discharges and building exits.	Remove locking features from all egress doors and gates.  If locks are required for security reasons, utilize special door locking features complying with NFPA 101.	Immediate

---



---

F-9	Egress	Storage was located in the egress path on all the floors except the sixth floor.	Keep egress paths and stairs clear of storage.	Immediate
-----	--------	--	--	-----------



F-10	Egress	Exit capacity was not adequate for the occupant load on first and sixth floor. The available exit capacity was 435 but the occupant load on the first and sixth floor was 445 and 610, respectively.	Reduce occupant load to not more than available exit capacity.	Immediate
------	--------	--	--	-----------

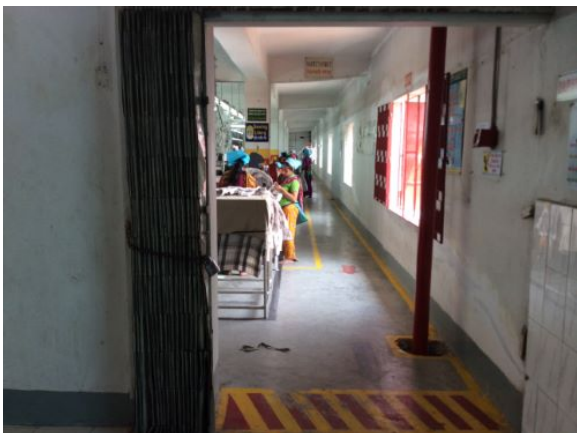
---

F-11	Egress	Storages were located in the North and South exit stair.	Remove all storage from exit stairs and egress paths.	Immediate
------	--------	--	---	-----------



---

F-12	Egress	Collapsible gates and sliding doors were provided along egress routes, exit stairs, exit discharges and building exits.	Replace all gates / sliding doors along the means of egress with side-hinged, swinging egress doors.  If locks are required for security reasons, utilize special door locking features complying with NFPA 101.	Within 1 month
------	--------	---	--	----------------



---

F-13	Egress	The width of egress aisles was less than 36-in. on all the floors except the fourth and sixth floor.	Provide minimum aisle widths of 36-in.	Within 3 months
------	--------	--	--	-----------------



---

F-14	Egress	Exit stair door and egress door serving 50 or more occupants did not swing in the direction of egress travel on the first floor.	Modify the egress door to swing in the direction of egress travel.	Within 3 months
------	--------	--	--	-----------------

F-15	Fire Protection	The fire alarm system was antiquated, not a listed system, and did not provide alarm and notification features consistent with acceptable standards.	Replace the fire alarm system with a new, listed addressable fire alarm system in accordance with NFPA 72.	Design within 4 months, install within 9 months
------	-----------------	--	--	---



F-16	Fire Protection	Inspection, testing, and maintenance for the fire alarm system was not in accordance with NFPA 72.	Inspect, test and maintain the fire alarm system, and keep written records on-site, in accordance with NFPA 72.	Within 3 months
------	-----------------	--	---	-----------------

F-17	Fire Protection	The building was equipped with single-station smoke alarms. Smoke alarm activation sounds only a local alarm and did not provide automatic fire alarm notification of occupants.	Remove single-station smoke alarms. Provide automatic smoke detection, tied to the fire alarm system, throughout the building in accordance with NFPA 72.	Within 6 months
------	-----------------	--	---	-----------------



F-18	Egress Lighting	Inspection, testing, and maintenance records for the emergency lighting system were not available.	Inspect, test and maintain the emergency lighting system in accordance with The ACCORD standard. Keep written records on-site.	Within 3 months
------	-----------------	--	--	-----------------

F-19	Egress Lighting	Based on the number and location of emergency lights observed, adequate illumination levels were not anticipated along egress routes inside the factory floors.	Test the emergency lighting system on each floor and provide additional emergency fixtures to provide adequate illumination along the means of egress. Provide a minimum illumination of 10 lux at the floor level within exit stairs and exit discharge paths and minimum 2.5 lux along exit access aisles.	Within 3 months
------	-----------------	---	--	-----------------

