

FIRE SAFETY INSPECTION REPORT

BODY LINK SWEATER LTD.

ACCORD ID: 12123

**PLOT NO. 371, 342, NOLJANI, CHANDONA,
JOYDEVPUR, GAZIPUR;**

OTHER FACTORIES: MARYGOLD ACCESSORIES LTD.



ACCORD
on Fire and Building Safety in Bangladesh

March 21, 2015

SUMMARY

Body Link Sweater Ltd. was surveyed for fire safety on 3/21/2015 by Jensen Hughes. This summary identifies the major deficiencies that were identified during the inspection.

The purpose of this survey was to identify significant fire safety issues and to provide recommendations for remediation based on applicable standards specified by the Accord. The scope of this initial fire safety inspection was limited to the review and identification of major fire safety issues. The inspection did not include identification of minor deficiencies, which will be further addressed as part of follow-up inspections.

Table 1 summarizes the major fire safety issues identified during the inspection. Recommendations have been provided to address each issue.

An implementation schedule shall be developed by the factory to remediate each of the findings. The specific timing of improvements, including any requested extensions due to design / installation constraints, shall be submitted to the Accord for approval.

Table 1. Findings And Recommendations

No.	Category	Finding	Recommendation	Remediation Timeframe
------------	-----------------	----------------	-----------------------	----------------------------------

F-1	Fire Rated Construction	The exit stairs are not separated from work areas and other spaces on each floor by fire-rated construction.	Provide minimum 1.5-hr fire rated doors for buildings that are 4 or more stories. Seal all unprotected openings to separate the exit stairs from work areas and other building spaces on all floor levels. Ensure that the fire doors are self-closing and positive latching and that they are provided with fire exit (panic) hardware where serving production floors.	Within 3 months
-----	-------------------------	--	--	-----------------

If fire doors are required to be held open for functional reasons, provide automatic-closing devices tied to the fire alarm system.

Once fire doors are installed, every door in a stair enclosure serving more than 5 stories shall be provided with re-entry unless it meets ACCORD standard 6.8.3.1.



F-2	Fire Rated Construction	Unsealed penetrations and openings are located in all the exit stair enclosures.	Seal all penetrations and openings in exit stair enclosure walls to maintain the fire separation.	Within 3 months
-----	-------------------------	--	---	-----------------



F-3	Fire Rated Construction	Electrical panels were located in the north exit stair enclosure.	Remove and re-locate all electrical panels from exit stair enclosures.	Within 3 months
-----	-------------------------	---	--	-----------------



F-4	Fire Rated Construction	The industrial dryers are not separated by fire-rated construction due to openings on the ground floor.	Separate the industrial dryer room by a minimum 2-hr fire-rated construction. Seal and protect all openings to maintain the required fire separations. Provide proper ventilation and consult with a qualified engineer.	Within 3 months
-----	-------------------------	---	--	-----------------



F-5	Fire Rated Construction	The boiler room is not separated by fire-rated construction due to openings, non-rated doors and penetrations in the exterior of the building. EMR room is not separated by fire-rated construction due to openings and non-rated doors in the north exit stair enclosure.	Separate the boiler and EMR room by a minimum 2-hr fire rated construction for high rise. Seal and protect all openings to maintain the required fire separations. When located to the exterior of a building, 3m (10 ft.) separation is required. Provide proper ventilation and consult a qualified engineer.	Within 3 months
-----	-------------------------	--	---	-----------------



F-6	Fire Rated Construction	Areas used for combustible storage open to the factory are not separated by fire-rated construction on the third, fourth and fifth floors.	Provide defined storage areas and limit the storage arrangement as follows: - Maximum height of 2.45m (8ft.) and maximum area of 23m ² (250 ft ²) - If sprinkler protected: maximum height of 3.66m (12ft.) and maximum area of 93m ² (305ft ²). Separate areas of unenclosed combustible storage by a minimum clear distance of 3m (10ft.).	Within 3 months
-----	-------------------------	--	---	-----------------



F-7	Fire Rated Construction	Rooms used for combustible storage are not separated by fire-rated construction on first and third floors and egress court.	<p>Provide dedicated storage rooms separated by minimum 1-hr fire-rated construction.</p> <p>Where separate storage rooms are not feasible, provide defined storage areas and limit the storage arrangement as follows:</p> <ul style="list-style-type: none"> - Maximum height of 2.45m (8ft.) and maximum area of 23m² (250 ft²) - If sprinkler protected: maximum height of 3.66m (12ft.) and maximum area of 93m² (305ft²) <p>Separate areas of unenclosed combustible storage by a minimum clear distance of 3m (10ft.).</p>	Within 3 months
-----	-------------------------	---	---	-----------------



F-8	Fire Rated Construction	Storage and generator room discharges directly into exterior discharge path serving the north exit.	Openings from exit enclosure to storage and utility spaces shall be provided with a vestibule with fire rated construction and openings.	Within 3 months
			Provide a 1-hr. fire rated door on the egress court side and a 1-hr. fire rated door on the storage and generator room side. Ensure that the fire rating of the vestibule construction matches that of the egress court enclosure.	



F-9	Fire Rated Construction	The exit discharge path serving the north exit is less than 3 m (10 ft.) wide and is not separated from the building interior.	Seal all penetrations and openings to the interior of the building along the discharge path, up to a height of 10 ft., to provide a minimum 1-hr fire separation. Alternatively, provide a second remote discharge path to the public way.	Within 6 months
-----	-------------------------	--	---	-----------------



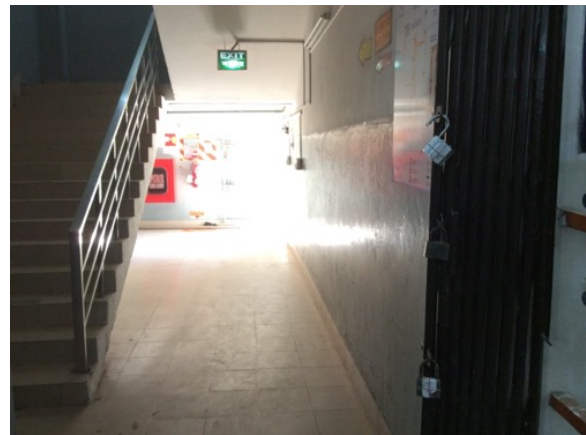
F-10	Egress	Building did not have stair designation signs at the exits stair enclosure. Building did not have occupant load signs on the factory floors.	Provide stair designation signs, occupant load signs and emergency evacuation plans at required locations.	Immediately
F-11	Egress	Exit capacity (336) is not adequate for the occupant load (400) on the sixth floor.	Reduce occupant load immediately to not more than available exit capacity (336). Provide additional exits in the future to increase exit capacity.	Immediately
F-12	Egress	Egress doors with locking features are provided at building exits, exit stair and along egress routes. Egress gates with locking features are provided at exit discharge. All doors were not open and unlocked during the inspection.	Remove locking features from all egress doors and gates. If locks are required for security reasons, utilize special door locking features complying with NFPA 101 and ACCORD standard 6.8.2.	Immediately



F-13	Egress	Obstructions were located in the egress path on fourth, fifth and sixth floors.	Keep egress paths and stairs clear of storage and obstructions.	Immediately
------	--------	---	---	-------------



F-14	Egress	Collapsible gates are provided at exit stairs. Sliding doors are provided at exit stairs, along egress routes and exit discharge.	Replace all gates and sliding doors along the means of egress with side-hinged, swinging egress doors in accordance with ACCORD standard 6.8.1.	Within 1 month
------	--------	---	---	----------------



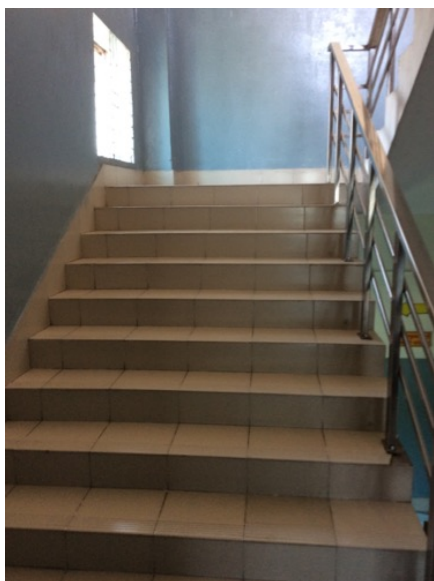
F-15	Egress	The width of egress aisles is less than 36-in. on the fifth floor.	Provide minimum aisle widths of 36-in.	Within 3 months
------	--------	--	--	-----------------



F-16	Egress	The day-care room does not meet ACCORD standard 3.4.2.1.1. on the first floor.	Day-care shall be located on the ground floor with a maximum travel distance of 9 m (30 ft) or located one story above level of exit discharge with direct access to an exit enclosure. If the above is not possible provide a minimum 2-hr fire-rated exit corridor between the day-care room and exit stair with ACCORD approval.	Within 3 months
------	--------	--	--	-----------------



F-17	Egress	Handrails are not provided on both sides of the exit stairs.	Provide handrails on both sides of the exit stairs. New handrails shall have a minimum height of 865 mm (34 in.) and a maximum height of 965 mm (38 in.) as measured from the leading edge of the tread. Intermediate handrails shall be provided when the stair width exceeds 2.2 m (87 in.)	Within 3 months
------	--------	--	---	-----------------





F-20	Fire Protection	Inspection, testing and maintenance of portable fire extinguishers is not in accordance with NFPA 10.	Inspect, test and maintain the portable fire extinguishers and keep written records on-site, in accordance with NFPA 10.	Within 3 months
F-21	Fire Protection	Inspection, testing and maintenance for the fire alarm system is not in accordance with NFPA 72.	Inspect, test and maintain the fire alarm system and keep written records on-site, in accordance with NFPA 72.	Within 3 months
F-22	Fire Protection	Inspection, testing and maintenance of the fire pump system is not in accordance with NFPA 20.	Inspect, test and maintain the fire pump system and keep written records on-site, in accordance with NFPA 20.	Within 3 months
F-23	Fire Protection	Inspection, testing and maintenance of the automatic sprinkler system is not in accordance with NFPA 25.	Inspect, test and maintain the automatic sprinkler system and keep written records on-site, in accordance with NFPA 25.	Within 3 months

F-24	Fire Protection	Inspection, testing and maintenance of the standpipe system is not in accordance with NFPA 14.	Inspect, test and maintain the standpipe system and keep written records on-site, in accordance with NFPA 14.	Within 3 months
F-25	Fire Protection	Visible notification was not provided for the building in accordance with NFPA 72.	Provide visible and audible notification for the building in accordance with NFPA 72.	Within 3 months



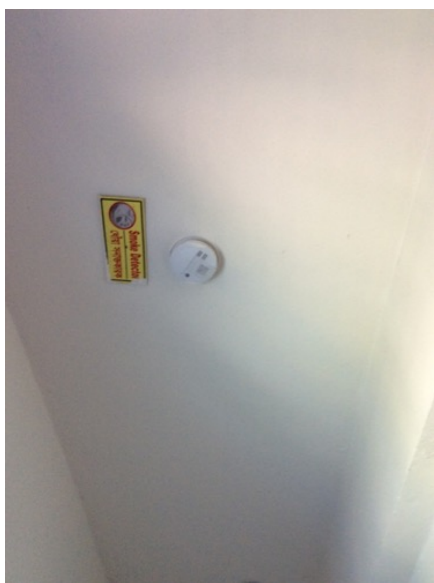
F-26	Fire Protection	Fire pump did not meet ACCORD standard 5.5.1 and 5.5.1.1.	Update current fire pump or provide a new fire pump that meets ACCORD standard 5.5.	Within 6 months
------	-----------------	---	---	-----------------



F-27	Fire Protection	The required standpipe system is not installed in accordance with the ACCORD standard.	Install a new standpipe system in accordance with ACCORD standard 5.4 and NFPA 14.	Within 6 months
			A class III system shall be installed in buildings with the highest occupiable floor 10 m (33 ft.) above grade or more. A class I system shall be permitted in buildings protected throughout by an approved automatic sprinkler system.	



F-28	Fire Protection	The building is equipped with single-station smoke alarms. Smoke alarm activation sounds only a local alarm and does not provide automatic fire alarm notification of occupants.	Remove single-station smoke alarms. Provide automatic smoke detection throughout the building, tied into the fire alarm system, in accordance with NFPA 72.	Within 9 months
------	-----------------	--	---	-----------------



F-29	Egress Lighting	Inspection, testing and maintenance for the emergency lighting system was not in accordance with The ACCORD standard.	Inspect, test and maintain the emergency lighting system in the accordance with The ACCORD standard. Keep written records on-site.	Within 3 months
------	-----------------	---	--	-----------------