

FIRE SAFETY INSPECTION REPORT

POSMI SWEATERS LTD
DHAKA ROAD, CHANDONA CHOWRASTA, GAZIPUR
SADAR, GAZIPUR

OTHER FACTORIES: NONE



ACCORD
on Fire and Building Safety in Bangladesh

Bangladesh Accord
Foundation

May 21, 2014

SUMMARY

Posmi Sweaters Ltd was surveyed for fire safety on 5/21/2014 by Hughes Associates, Inc. This summary identifies the major deficiencies that were identified during the inspection.

The purpose of this survey was to identify significant fire safety issues and to provide recommendations for remediation based on applicable standards specified by the Accord. The scope of this initial fire safety inspection was limited to the review and identification of major fire safety issues. The inspection did not include identification of minor deficiencies, which will be further addressed as part of follow-up inspections.

Table 1 summarizes the major fire safety issues identified during the inspection. Recommendations have been provided to address each issue.

An implementation schedule shall be developed by the factory to remediate each of the findings. The specific timing of improvements, including any requested extensions due to design / installation constraints, shall be submitted to the Accord for approval.

Table 1. Findings And Recommendations

| No. | Category | Finding | Recommendation | Remediation Timeframe |
|-----|-------------------------|---|--|-----------------------|
| F-1 | Fire Rated Construction | Rooms used for combustible storage are not separated by fire-rated construction on every floor. | Provide dedicated storage rooms separated by minimum 1-hr fire-rated construction. | Within 3 months |



| | | | | |
|-----|-------------------------|---|---|-----------------|
| F-2 | Fire Rated Construction | The exit stairs are not separated from work areas on each floor by fire-rated construction. | Provide minimum 1.5-hr fire rated doors and seal all unprotected openings to separate the exit stairs from work areas and other building spaces on all floor levels. Ensure that the fire doors are self-closing and positive latching and that they are provided with fire exit (panic) hardware where serving production floors. If fire doors are required to be held open for functional reasons, provide automatic-closing devices tied to the fire alarm system. | Within 3 months |
|-----|-------------------------|---|---|-----------------|



| | | | | |
|-----|-------------------------|--|---|-----------------|
| F-3 | Fire Rated Construction | Flammable liquid storage area is not separated by fire-rated construction (openings, non-rated doors, penetrations) in the generator shed. | Separate the flammable liquid storage room by a minimum 2-hr fire-rated construction. Seal and/or protected all openings to maintain the required fire separations. | Within 3 months |
|-----|-------------------------|--|---|-----------------|

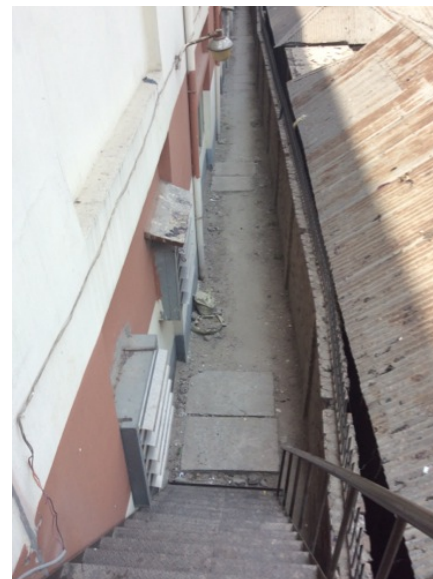


| | | | | |
|-----|-------------------------|---|---|-----------------|
| F-4 | Fire Rated Construction | Areas used for combustible storage are not separated by fire-rated construction on every floor. | Where separate storage rooms are not feasible, provide defined storage areas and limit the storage arrangement as follows: - Maximum height of 2.4m and maximum area of 23m ² - If sprinkler protected: maximum height of 3.66m and maximum area of 93m ² | Within 3 months |
|-----|-------------------------|---|---|-----------------|



| | | | | |
|-----|-------------------------|--|---|-----------------|
| F-5 | Fire Rated Construction | The exit discharge path serving north exit on 1st floor is less than 10 ft wide and is not separated from the building interior. | Seal all penetrations and openings to the interior of the building along the discharge path, up to a height of 10 ft., to provide a minimum 1-hr fire separation. | Within 6 months |
|-----|-------------------------|--|---|-----------------|

Alternatively, provide a second remote discharge path to the public way (only include this if feasible).



| | | | | |
|-----|--------|---|--|-----------|
| F-6 | Egress | Egress doors / gates with locking features are provided at exit stairs and building exits on every floor. | Remove locking features from all egress doors. If locks are required for security reasons, utilize special door locking features complying with NFPA 101. | Immediate |
|-----|--------|---|--|-----------|



F-7 Egress

Sliding doors are provided at building exits and exit discharge on every floor.

Replace all gates / sliding doors along the means of egress with side-hinged, swinging egress doors.

Within 1 month

If locks are required for security reasons, utilize special door locking features complying with NFPA 101.



| | | | | |
|------|-----------------|--|--|--|
| F-8 | Fire Protection | The fire alarm system is antiquated, not a listed system, and does not provide alarm and notification features consistent with acceptable standards. | Replace the fire alarm system with a new, listed addressable fire alarm system in accordance with NFPA 72. | Design within 4 months, install within 9 months |
| F-9 | Fire Protection | The high-rise building has an occupied floor greater than 23m (75 ft) and is not provided with automatic sprinkler protection. The large occupant loads, heavy fuel loading, and anticipated extended egress times warrant sprinkler protection. | Provide automatic sprinkler protection throughout the building in accordance with NFPA 13. | Design within 6 months, install within 12 months |
| F-10 | Fire Protection | Inspection, testing, and maintenance for the fire alarm system were not available. | Inspect, test and maintain the fire alarm system, and keep written records on-site, in accordance with NFPA 72. | Within 3 months |
| F-11 | Fire Protection | The building is equipped with single-station smoke alarms. Smoke alarm activation sounds only a local alarm and does not provide automatic fire alarm notification of occupants. | Replace the single-station smoke alarms. Provide automatic smoke detectors throughout the building in accordance with NFPA72. | Within 6 months |
| F-12 | Egress Lighting | Inspection, testing, and maintenance for the emergency lighting system were not available. | Inspect, test and maintain the emergency lighting system in accordance with The ACCORD standard. Keep written records on-site. | Within 3 months |