

MUAZUDDIN KNIT FASHION LTD (10862)

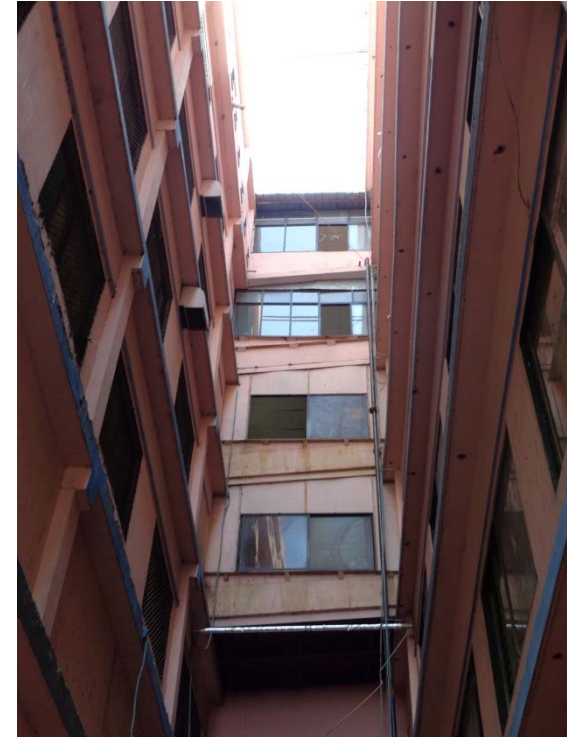
Plot# B-31, East Chandura, Kaliakoir, Gazipur
(+24.0201N, 90.1619E)
15 Marsh 2014

ACCORD
on Fire and Building Safety in Bangladesh



Site Observations

Presence of connecting bridges



Connecting bridges, supported on beams.
Building Engineer to check that beam and columns have been designed to accommodate loads.

Connecting bridges

Lack of water proofing membrane on roof



No waterproofing membrane was visible on the roof of the building. This means that any cracks in the surface finishes on the roof will allow water to seep into the concrete slab beneath the finishes, and cause long-term soaking of the slab.

Lack of water proofing membrane on roof



Priority Actions

Problems Observed

ITEM 1: Concrete strength in columns

ITEM 2: Presence of connecting bridges

ITEM 3: Lack of water proofing on roof

Item 1 and actions

Verify concrete strengths in internal columns from basement to Roof

Priority 1

(Immediate - Now)

- None required

Priority 2

(within 4-months)

- Factory Engineer to review design, loads and columns stresses.
- Verify in situ concrete stresses either by cores or existing cylinder strength data for from 4 cores.

Priority 3

(within 6-months)

- Produce and actively manage a loading plan for all floor plates within the factory giving consideration to floor capacity and column capacity.
- Verify in situ concrete stresses either by cores or existing cylinder strength data for from 4 cores.

Item 2 and actions

Check on structure from localized high loading from connecting bridges

Priority 1

(Immediate - Now)

- None required

Priority 2

(within 4-months)

- The factory engineer is to verify the capacity of beams and columns.

Priority 3

(within 6-months)

- Carry out any remedial measures that the factory engineer considers necessary to ensure the long term stability of both the tower and the building itself.

Item 3 and actions

Roof appears not to have any waterproofing system applied.

Priority 1

(Immediate - Now)

- None required

Priority 2

(within 4-months)

- None required

Priority 3

(within 6-months)

- Consider adding a waterproofing membrane on roof.