

FIRE SAFETY INSPECTION REPORT

GOLDEN REFIT GARMENT LTD.

**589 CHIRIR CHALA, BAGHAR BAZAR, BHABANIPUR,
GAZIPUR**

OTHER FACTORIES: NONE



ACCORD
on Fire and Building Safety in Bangladesh

The logo of the Bangladesh Accord Foundation is a circular emblem. It features a red map of Bangladesh in the center, surrounded by the text "Bangladesh Accord Foundation" in a circular arrangement. The word "Bangladesh" is at the top, "Accord" is on the right, and "Foundation" is at the bottom.

April 23, 2014

SUMMARY

Golden Refit Garment Ltd. was surveyed for fire safety on 4/23/2014 by Hughes Associates, Inc. This summary identifies the major deficiencies that were identified during the inspection.

The purpose of this survey was to identify significant fire safety issues and to provide recommendations for remediation based on applicable standards specified by the Accord. The scope of this initial fire safety inspection was limited to the review and identification of major fire safety issues. The inspection did not include identification of minor deficiencies, which will be further addressed as part of follow-up inspections.

Tables 1 - 2 summarizes the major fire safety issues identified during the inspection. Recommendations have been provided to address each issue.

An implementation schedule shall be developed by the factory to remediate each of the findings. The specific timing of improvements, including any requested extensions due to design / installation constraints, shall be submitted to the Accord for approval.

Table 1. Findings And Recommendations - Golden Refit Ltd building #2

No.	Category	Finding	Recommendation	Remediation Timeframe
F-1	Fire Rated Construction	The exit stairs are not separated from work areas, other spaces on each floor by fire-rated construction.	<p>Provide minimum 1.5-hr fire rated doors and seal all unprotected openings to separate the exit stairs from work areas and other building spaces on all floor levels. Ensure that the fire doors are self-closing and positive latching and that they are provided with fire exit (panic) hardware where serving production floors.</p> <p>If fire doors are required to be held open for functional reasons, provide automatic-closing devices tied to the fire alarm system.</p>	Within 3 months





F-2	Egress	Egress doors / gates with locking features are provided at building exits, exit stairs, along egress routes, exit discharge.	Remove locking features from all egress doors / gates. If locks are required for security reasons, utilize special door locking features complying with NFPA 101.	Immediate
-----	--------	--	--	-----------





F-3 Egress

Storage was located in the egress throughout the facility.

Keep egress paths and clear of storage at all times.

Immediate





F-4 Egress

Collapsible gates / sliding doors are provided at building exits, exit stairs, along egress routes, exit discharges throughout the factory.

Replace all gates / sliding doors along the means of egress with side-hinged, swinging egress doors.

Within 1 month

If locks are required for security reasons, utilize special door locking features complying with NFPA 101.





F-5	Egress	Egress door serving 50 or more occupants does not swing in the direction of egress travel ground floor second exit.	Modify the egress door to swing in the direction of egress travel.	Within 3 months
-----	--------	---	--	-----------------



F-6	Fire Protection	No smoke detection on first floor, this is used as dorm and sleeping area.	Install an addressable smoke detection system	Immediate
-----	-----------------	--	---	-----------


F-7	Fire Protection	The building is equipped with single-station smoke alarms. Smoke alarm activation sounds only a local alarm and does not provide automatic fire alarm notification of occupants. Ground floor only.	Replace the single-station smoke alarms. Provide automatic smoke detection throughout the building in accordance with NFPA 72.	Within 6 months
				
F-8	Egress Lighting	There was no egress lighting in this facility.	Install lighting in accordance with Life Safety Code NFPA 101.	Immediate
F-9	Egress Lighting	Based on the number and location of emergency lights observed, adequate illumination levels are not anticipated along egress routes on ground or first floor.	Test the emergency lighting system on each floor and provide additional emergency fixtures to provide adequate illumination along the means of egress. Provide a minimum illumination of 10 lux at the floor level within exit stairs and exit discharge paths and minimum 2.5 lux along exit access aisles.	Within 3 months

Table 2. Findings And Recommendations - Golding Refit Garments Ltd

No.	Category	Finding	Recommendation	Remediation Timeframe
F-1	Fire Rated Construction	The exit stairs are not separated from work areas, other spaces on each floor by fire-rated construction.	<p>Provide minimum 1.5-hr fire rated doors and seal all unprotected openings to separate the exit stairs from work areas and other building spaces on all floor levels. Ensure that the fire doors are self-closing and positive latching and that they are provided with fire exit (panic) hardware where serving production floors.</p> <p>If fire doors are required to be held open for functional reasons, provide automatic-closing devices tied to the fire alarm system.</p>	Within 3 months

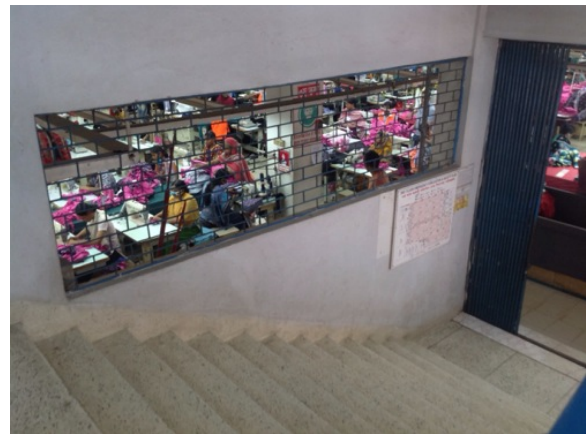




F-2	Fire Rated Construction	Areas used for storage are not separated by fire-rated construction on ground floor or fourth floor.	<p>Provide dedicated storage rooms separated by minimum 1-hr fire-rated construction.</p> <p>Where separate storage rooms are not feasible, provide defined storage areas and limit the storage arrangement as follows:</p> <ul style="list-style-type: none">- Maximum height of 2.4m and maximum area of 23m²- If sprinkler protected: maximum height of 3.66m and maximum area of 93m² <p>Separate areas of unenclosed combustible storage by a minimum clear distance of 3m.</p>	Within 3 months
-----	-------------------------	--	---	-----------------



F-3	Fire Rated Construction	The exit stairs are not separated from work areas, other spaces on each floor by fire-rated construction.	Provide minimum 1.5-hr fire rated doors and seal all unprotected openings to separate the exit stairs from work areas and other building spaces on all floor levels. Ensure that the fire doors are self-closing and positive latching and that they are provided with fire exit (panic) hardware where serving production floors. If fire doors are required to be held open for functional reasons, provide automatic-closing devices tied to the fire alarm system.	Within 3 months
-----	-------------------------	---	---	-----------------



F-4	Egress	Egress doors / gates with locking features are provided at building exits, exit stairs, along egress routes, exit discharge.	Remove locking features from all egress doors / gates. If locks are required for security reasons, utilize special door locking features complying with NFPA 101.	Immediate
-----	--------	--	--	-----------



F-5	Egress	Storage was located in the egress path south wall fourth floor and ground floor packing area.	Keep egress paths and stairs clear of storage.	Immediate
-----	--------	---	--	-----------

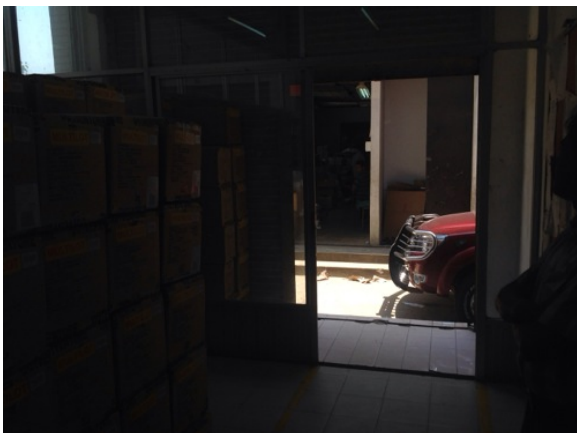


F-6	Egress	Storage was located in the exit stair throughout the facility.	Remove all storage from exit stairs and egress paths.	Immediate
-----	--------	--	---	-----------



F-7	Egress	Exit capacity is not adequate for the occupant load on floors 1 and 2.	Reduce occupant load to not more than available exit capacity to not more than 533 occupants.	Immediate
-----	--------	--	---	-----------

F-8	Egress	Collapsible gates / sliding doors are provided at building exits, exit stairs, along egress routes, exit discharges throughout the factory.	Replace all gates / sliding doors along the means of egress with side-hinged, swinging egress doors.	Within 1 month
			If locks are required for security reasons, utilize special door locking features complying with NFPA 101.	



F-9	Egress	Exit stairs discharge inside the building ground floor from the south exit.	Provide 2-hr fire-rated exit passageway leading directly outside (vestibules to separate any storage areas).	Within 6 months
-----	--------	---	--	-----------------



F-10	Fire Protection	The fire alarm system is antiquated, not a listed system, and does not provide alarm and notification features consistent with acceptable standards.	Replace the fire alarm system with a new, listed addressable fire alarm system in accordance with NFPA 72.	Design within 4 months, install within 9 months
------	-----------------	--	--	---



F-11	Fire Protection	Inspection, testing, and maintenance for the fire alarm system was not in accordance with NFPA 72.	Inspect, test and maintain the fire alarm system, and keep written records on-site, in accordance with NFPA 72.	Within 3 months
F-12	Fire Protection	The building is equipped with single-station smoke alarms. Smoke alarm activation sounds only a local alarm and does not provide automatic fire alarm notification of occupants.	Replace the single-station smoke alarms and provide automatic smoke detection throughout the building in accordance with NFPA 72.	Within 6 months





F-13 Egress Lighting

Based on the number and location of emergency lights observed, adequate illumination levels are not anticipated along egress routes on ground or first floor.

Test the emergency lighting system on each floor and provide additional emergency fixtures to provide adequate illumination along the means of egress. Provide a minimum illumination of 10 lux at the floor level within exit stairs and exit discharge paths and minimum 2.5 lux along exit access aisles.

Within 3 months



