

# **FIRE SAFETY INSPECTION REPORT**

**OCEAN SWEATER LTD.**

**ACCORD ID: 12117**

**ISLAMPUR, JOYDEBPUR, GAZIPUR**

**OTHER FACTORIES: NONE**



**ACC**  **RD**  
on Fire and Building Safety in Bangladesh

February 13, 2015

## **SUMMARY**

**Ocean Sweater Ltd. was surveyed for fire safety on 2/13/2015 by Jensen Hughes. This summary identifies the major deficiencies that were identified during the inspection.**

**The purpose of this survey was to identify significant fire safety issues and to provide recommendations for remediation based on applicable standards specified by the Accord. The scope of this initial fire safety inspection was limited to the review and identification of major fire safety issues. The inspection did not include identification of minor deficiencies, which will be further addressed as part of follow-up inspections.**

**Table 1 summarizes the major fire safety issues identified during the inspection. Recommendations have been provided to address each issue.**

**An implementation schedule shall be developed by the factory to remediate each of the findings. The specific timing of improvements, including any requested extensions due to design / installation constraints, shall be submitted to the Accord for approval.**

**Table 1. Findings And Recommendations**

No.	Category	Finding	Recommendation	Remediation Timeframe
-----	----------	---------	----------------	-----------------------

F-1	Fire Rated Construction	An unsealed electrical shaft was located in the fire-rated floor/ceiling assemblies.	Provide a minimum 2-hr fire-rated shaft to separate the utility risers from each floor level and seal all penetrations in floor/ceiling assemblies to maintain the fire separation.	Within 3 months
-----	-------------------------	--	---	-----------------





---

F-2	Fire Rated Construction	The diesel fire pump/electric air compressor room adjacent to the southeast exit stair discharge is not provided with adequate fire rated separation.	Provide fire pump/air compressor room with 2 hr. rated fire separation when not sprinklered and 1 hr. rated fire separation when provided with automatic sprinklers, in accordance with NFPA 20.	Within 3 months
-----	-------------------------	---	--	-----------------





---

F-3	Fire Rated Construction	The gas industrial dryers on the ground floor are not separated by fire-rated construction and open to the factory floor.	Separate the industrial dryer area by a minimum 2-hr fire-rated construction. Seal and/or protect all openings to maintain the required fire separations. Provide proper ventilation and consult with a qualified engineer.	Within 3 months
-----	-------------------------	---	---	-----------------



F-4	Fire Rated Construction	The gas boiler room adjacent to the northwest exit stair discharge and the electric boiler on the first floor were not separated by fire-rated construction. The gas boiler had unprotected openings and the electric boiler was open to the factory floor.	Separate the boilers by a minimum 1-hr fire-rated construction for non-high rise, and 2-hr fire rated construction for high rise. Seal and/or protect all openings to maintain the required fire separations. When located to the exterior of a building, 3m (10 ft.) separation is required. Provide proper ventilation and consult a qualified engineer.	Within 3 months
-----	-------------------------	---	--	-----------------



F-5	Fire Rated Construction	Rooms used for combustible storage are not separated by fire-rated construction. Specifically, the second floor accessory store and the third floor yarn store.	Provide dedicated storage rooms separated by minimum 1-hr fire-rated construction.  Where separate storage rooms are not feasible, provide defined storage areas and limit the storage arrangement as follows: - Maximum height of 2.45m (8ft.) and maximum area of 23m <sup>2</sup> (250 ft <sup>2</sup> ) - If sprinkler protected: maximum height of 3.66m (12ft.) and maximum area of 93m <sup>2</sup> (305ft <sup>2</sup> )  Separate areas of unenclosed combustible storage by a minimum clear distance of 3m (10ft.).	Within 3 months
-----	-------------------------	---	---	-----------------



---

F-6	Fire Rated Construction	The exit stairs are not separated from work areas and other spaces on each floor by fire-rated construction.	<p>Provide minimum 1-hr rated doors for buildings with 3 or fewer stories and 1.5-hr fire rated doors for buildings that are 4 or more stories. Seal all unprotected openings to separate the exit stairs from work areas and other building spaces on all floor levels. Ensure that the fire doors are self-closing and positive latching and that they are provided with fire exit (panic) hardware where serving production floors.</p> <p>If fire doors are required to be held open for functional reasons, provide automatic-closing devices tied to the fire alarm system.</p> <p>Once fire doors are installed, every door in a stair enclosure serving more than 5 stories shall be provided with re-entry unless it meets ACCORD standard 6.8.3.1.</p>	Within 3 months
F-7	Fire Rated Construction	The northeast exit stair enclosure is not separated from other spaces on the ground floor by fire-rated construction.	The exit stair enclosure shall be provided with a minimum 1-hr fire resistance rating for buildings with 3 or fewer stories and a minimum of 2-hr fire resistance rating for buildings 4 or more stories.	Within 3 months

---



---

F-8	Fire Rated Construction	A possible unsealed boiler pipe penetration was located in the fire-rated floor/ceiling assembly on the first floor.	Seal all penetrations and openings in floor/ceiling assemblies to maintain the fire separation.	Within 3 months
-----	-------------------------	--	---	-----------------



F-9	Fire Rated Construction	The exit discharge path serving the northwest exit stair discharge, is less than 3 m (10 ft.) wide and is not separated from the building interior.	Seal all penetrations and openings to the interior of the building along the discharge path, up to a height of 10 ft., to provide a minimum 1-hr fire separation.	Within 6 months
-----	-------------------------	---	---	-----------------

Alternatively, provide a second remote discharge path to the public way by clearing the path along the west and south sides of the building. Ensure that a minimum egress path width of 36 in. is maintained and that the path is even and clear. The gas boiler room adjacent to the northwest exit stair discharge will need to be relocated as the second egress path is not permitted to pass through a utility room.



---

F-10	Egress	Building did not have occupant load signs at the required locations. The building did have some emergency evacuation plans, however not at all required locations.	Provide occupant load signs and emergency evacuation plans at all required locations.	Immediately
F-11	Egress	Egress doors with locking features are provided along egress routes. All doors were open and unlocked during the inspection.	Remove locking features from all egress doors.  If locks are required for security reasons, utilize special door locking features complying with NFPA 101 and ACCORD standard 6.8.2.	Immediately

---



---

F-12	Egress	Storage was located in the northwest exit stair on the ground floor and there was also a small storage room located on the first floor.	Remove all storage from exit stairs and egress paths.	Immediately
------	--------	---	---	-------------

---



F-13 Egress

Sliding doors are provided along egress routes.

Replace all sliding doors along the means of egress with side-hinged, swinging egress doors in accordance with ACCORD standard 6.8.1.

Within 1 month



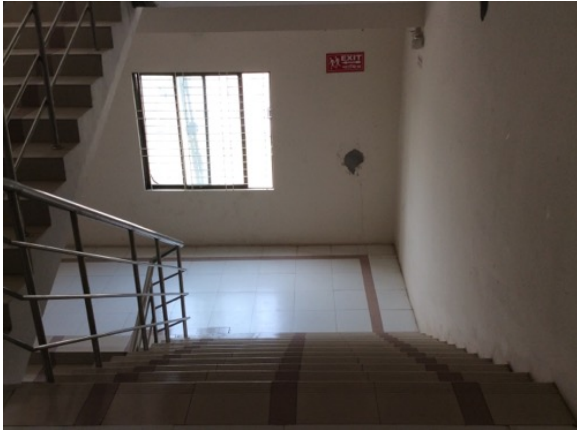
---

F-14	Egress	After discharge from the southeast exit stair there was a hole in the ground that was covered up with metal sheeting.	Cover the hole with a concrete slab to prevent the metal sheeting from being accidentally moved in an emergency situation, and causing a hazard to evacuating occupants.	Within 1 month
------	--------	---	--	----------------



---

F-15	Egress	Handrails are not provided on both sides of all exit stairs.	Provide handrails on both sides of the exit stair. New handrails shall have a minimum height of 865 mm (34 in.) and a maximum height of 965 mm (38 in.) as measured from the leading edge of the tread. Intermediate handrails shall be provided when the stair width exceeds 2.2 m (87 in.)	Within 3 months
------	--------	--	--	-----------------



---

F-16	Fire Protection	Some of the interconnected smoke detectors throughout the building still had covers on them from when the system was installed.	Remove covers from all interconnected smoke detectors so that the detection system will function properly.	Immediately
------	-----------------	---	--	-------------



---

F-17	Fire Protection	Some of the installed fire doors were not properly sealed or positive latching.	Ensure that all fire doors are properly sealed. Modify the door closing hydraulics to ensure that the doors are positive latching to prevent the flow of combustion byproducts between compartments or into the exit stair enclosures.	Within 1 month
------	-----------------	---	--	----------------



---

F-18	Fire Protection	Some no smoking signs are present in the factory, however they are not provided at the required locations.	Smoking is prohibited in any garment factory building or separate storage building. Signs shall be posted in Bengali and English at all building entrances. If the factory creates a designated smoking area outside the building, information of these areas will be posted on the signs.	Within 1 months
------	-----------------	--	--	-----------------



---

F-19	Fire Protection	The addressable fire alarm panel showed a "Fault" at the time of the inspection.	Ensure that the fire alarm system is installed in accordance with NFPA 72 and that all components are fully operational.	Within 3 months
------	-----------------	--	--	-----------------



F-20	Fire Protection	Inspection, testing and maintenance of portable fire extinguishers is not in accordance with NFPA 10.	Inspect, test and maintain the portable fire extinguishers and keep written records on-site, in accordance with NFPA 10.	Within 3 months
F-21	Fire Protection	Inspection, testing and maintenance for the fire alarm system is not in accordance with NFPA 72.	Inspect, test and maintain the fire alarm system and keep written records on-site, in accordance with NFPA 72.	Within 3 months
F-22	Fire Protection	Inspection, testing and maintenance of the fire pump system is not in accordance with NFPA 20.	Inspect, test and maintain the fire pump system and keep written records on-site, in accordance with NFPA 20.	Within 3 months
F-23	Fire Protection	Inspection, testing and maintenance of the standpipe system is not in accordance with NFPA 14.	Inspect, test and maintain the standpipe system and keep written records on-site, in accordance with NFPA 14.	Within 3 months

F-24	Fire Protection	Visible notification was not provided for the building in accordance with NFPA 72.	Provide visible notification for the building in accordance with NFPA 72.	Within 3 months
F-25	Fire Protection	Fire pump did not meet ACCORD standard 5.5.1 and 5.5.1.1.	Update current fire pump or provide a new fire pump that meets ACCORD standard 5.5.	Within 6 months
F-26	Fire Protection	The building is equipped with interconnected smoke detectors, however the detection system does not cover all areas of the building.	Provide automatic smoke detection throughout the building, tied into the fire alarm system, in accordance with NFPA 72.	Within 9 months
F-27	Egress Lighting	Exit signage was not provided from the third floor linking section, from the second floor accessory store and from the first floor sample section.	Provide exit signs above all building exits to the exterior, all doors to the exit stairs and along all paths of travel where a change of direction is not obvious.	Within 1 month





F-28 Egress Lighting

An exit sign at the building exit from the northwest exit stair on the ground floor was not illuminated (burned out, broken, etc.).

Regularly inspect all exit signage and replace/install lights as needed to illuminate signs. The source of illumination shall provide not less than 50 lux at the illuminated surface with a contrast of not less than 0.5. Approved self luminous signs which provide evenly illuminated letters having a minimum luminance of 0.2 cd/m<sup>2</sup> may also be used.

Within 1 month



---

F-29	Egress Lighting	Inspection, testing and maintenance for the emergency lighting system was not in accordance with The ACCORD standard.	Inspect, test and maintain the emergency lighting system in the accordance with The ACCORD standard. Keep written records on-site.	Within 3 months
F-30	Egress Lighting	Based on the number and location of emergency lights observed, adequate illumination levels are not anticipated along all egress routes.	Test the emergency lighting system on each floor and provide additional emergency fixtures to supply adequate illumination along the means of egress. Provide a minimum illumination of 10 lux at the floor level within exit stairs and along exit discharge paths and a minimum 2.5 lux along exit access aisles.	Within 3 months

---