



Leaf Grade Casualwear Ltd.

Kewa (Madrasha Road), Sreepur, Gazipur

(24.212170N, 90.443544 E)

14th June 2017





Observation



Production Shed



Lack of lateral stability

Observation: (Production Shed)



No roof bracing



Discontinued Vertical bracing.



Only continued vertical bracing

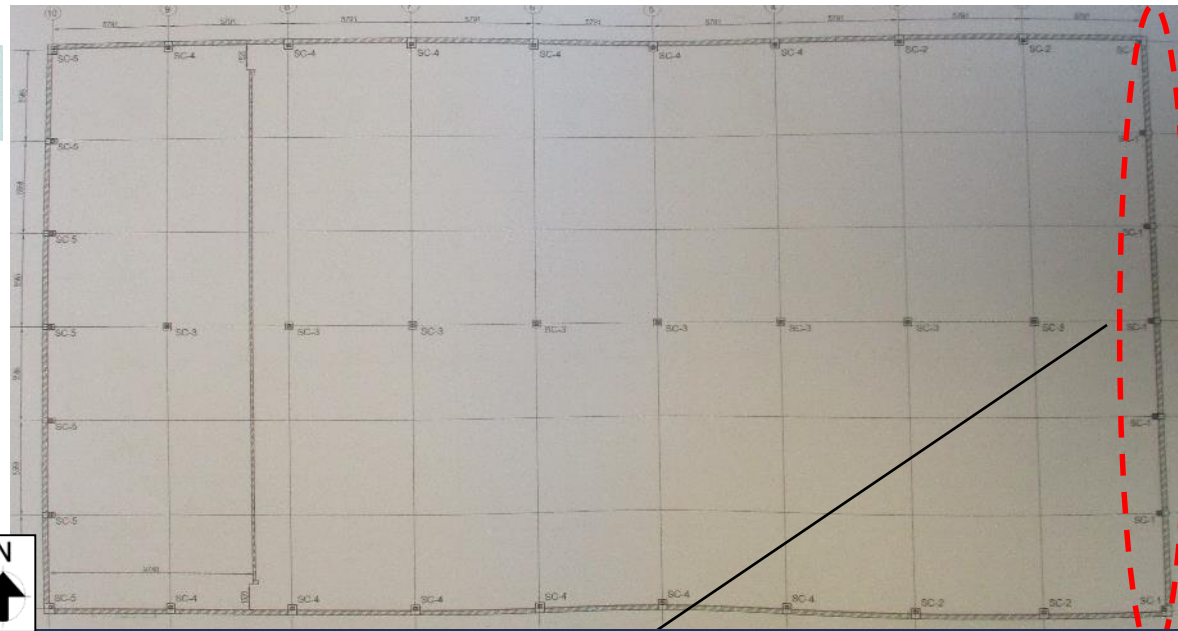
Specific lateral load resisting system (bracing and compression strut) wasn't observed. Factory is required to engage an engineer for assessment the lateral stability of the shed.

Observation: (Knitting Building)



Lack of connection details

Observation: (Production Shed)

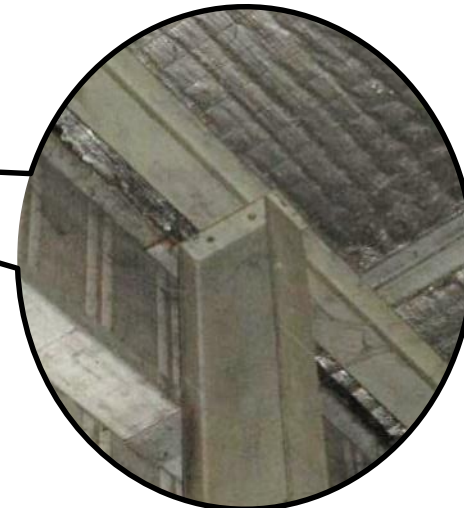


On grid 1-1, bolt was missing on several column rafter joint. In addition, no welding was observed on the joint. Factory is required to engage an engineer to check the joint adequacy and take remedial measures.

Column layout plan in provided drawing



End wall framing at grid 1-1



No bolt was observed Column and rafter joint

Observation: (Knitting Building)



Corrosion observed on structural steel members

Observation: (Production Shed)



Corrosion on column in front of north west toilet area



Corrosion on column in front of north east toilet area



Corrosion on column rafter joint.

Corrosion may cause damage on structural members. Factory is required to repair the corrosion and provide the anti-corrosion paint.

Observation: (Knitting Building)

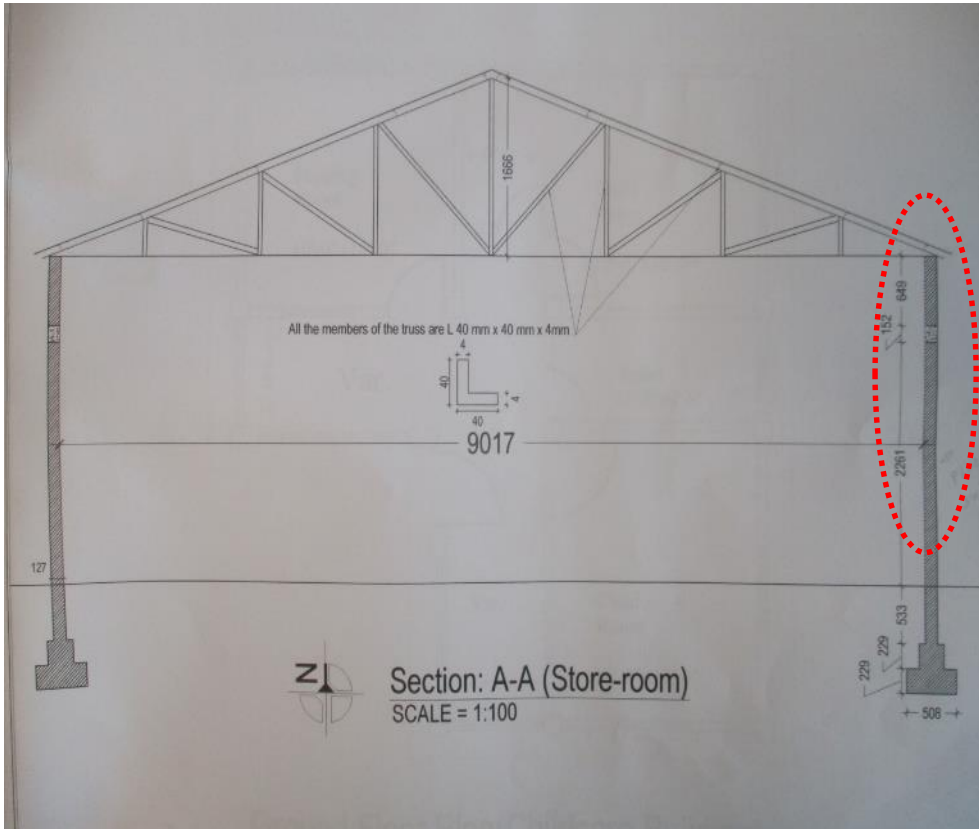


Store Shed



Discrepancies between site observations and provided drawings

Observation: (Store Shed)



Typical frame section in provided drawing shows truss was supported on brick wall



Steel pipe support was found on east side in-place of brick wall.

Observation: (Store Shed)



Lack of lateral stability

Observation: (Store Shed)



Roof bracing was missing



Truss has been found supported with brick wall on south side. It appears to be a non engineered connection.



Truss has been found supported with steel pipe on north side and the welded joint was used as a connection

No proper lateral resisting system was observed. Factory is required to engage an engineer for assessment the lateral stability of the shed.

Observation: (Store Shed)



Utility shed and Dining Shed



Apparently non-engineered light weight roof shed

Observation:(Utility shed and Dining Shed)



Roof truss system with out any bracing and supported by brick wall.



Roof truss supported by brick wall



The support condition of the truss was appeared to be non-engineered and inadequate



Truss supported on brick wall.

The support condition of those steel sheds were vulnerable and non engineered due to poor detailing of joints at supports end.

Observation:(Utility shed and Dining Shed)



Childcare Building

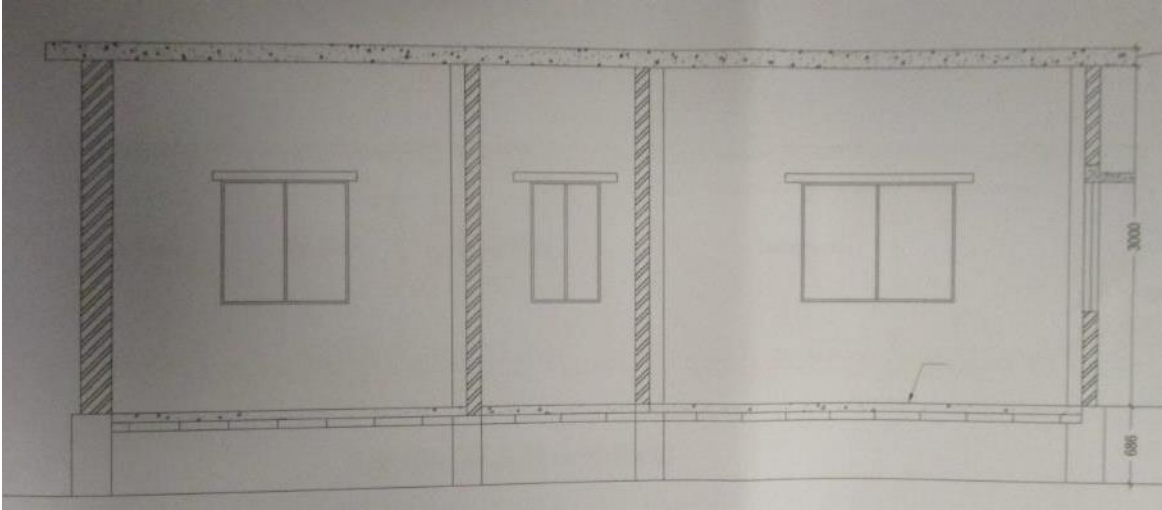


Lack of information in as-build drawing

Observation:(Childcare Building)



Extent of Childcare building



Sectional view of the building

No detail about the support condition was present in provided drawing. Factory is required to engage an engineer for produce a detail as-build drawing

Observation:(Utility shed and Dining Shed)



Problems Observed

Production Shed:

Item 1: Lack of lateral stability

Item 2: Lack of connection details.

Item 3: Corrosion observed on structural steel members

Store Shed:

Item 4: Discrepancies between site observations and provided drawings

Item 5: Lack of lateral stability

Utility Shed and Dining Shed:

Item 6 : Apparently non-engineered light weight roof shed

Childcare Building:

Item 7 : Lack of information in as-built drawing



Item No.	Observation	Recommended Action Plan	Recommended Timeline
1	(Production Shed) Lack of lateral stability	Building engineer to check the stability system of the building against lateral loading.	6-weeks
2	(Production Shed) Lack of lateral stability	Carry out remedial works resulting from engineering assessment where necessary.	6-months
3	(Production Shed) Lack of connection details	Building engineer to produce an as-constructed connection detail for all connections.	6-weeks
4	(Production Shed) Lack of connection details	Carry out Engineering Assessment to check the connection adequacy.	6-weeks
5	(Production Shed) Lack of connection details	Carry out remedial works resulting from engineering assessment where necessary.	6-months
6	(Production Shed) Corrosion observed on structural steel members	Building engineer to check the extend of corrosion to the structural member and suggest suitable remedial measures to protect steel member from further corrosion.	6-weeks
7	(Production Shed) Corrosion observed on structural steel members	Carry out remedial works resulting from engineering assessment where required.	6-months

Item No.	Observation	Recommended Action Plan	Recommended Timeline
8	(Store Shed) Discrepancies between site observations and provided drawings	Building engineer to survey the whole building and produce as-built documentation reflecting the as constructed condition.	6-weeks
9	(Store Shed) Lack of lateral stability	Building engineer to check the stability system of the building against lateral load	6-weeks
10	(Store Shed) Lack of lateral stability	Carry out remedial works resulting from engineering assessment where necessary.	6-months
11	(Utility Shed and Dining Shed) Apparently non-engineered light weight roof shed	Building engineer to check the capacity of the lightweight steel roofs under lateral and vertical loading.	6-weeks
12	(Utility Shed and Dining Shed) Apparently non-engineered light weight roof shed	Carry out remedial works resulting from engineering assessment where required.	6-weeks
13	(Childcare Building) Lack of information in as-built drawing	Building engineer to survey the whole building and produce as-built documentation reflecting the as constructed condition.	6-weeks