



Besta Apparels (New)

666/1, Gasa, Boad Bazar, Ward#36, National University-1704, Gazipur
(23.941965N, 90.369348E)
06th June 2018



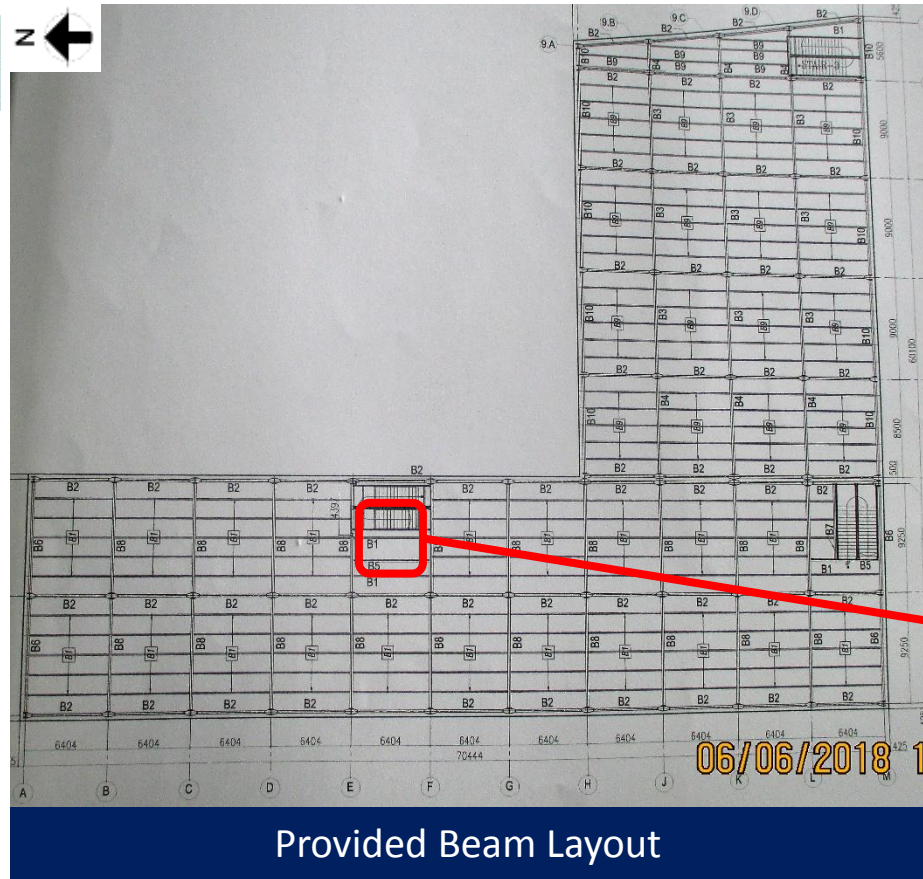


Observation



Discrepancy observed between As built drawing and on site condition

Observation: Welfare Shed



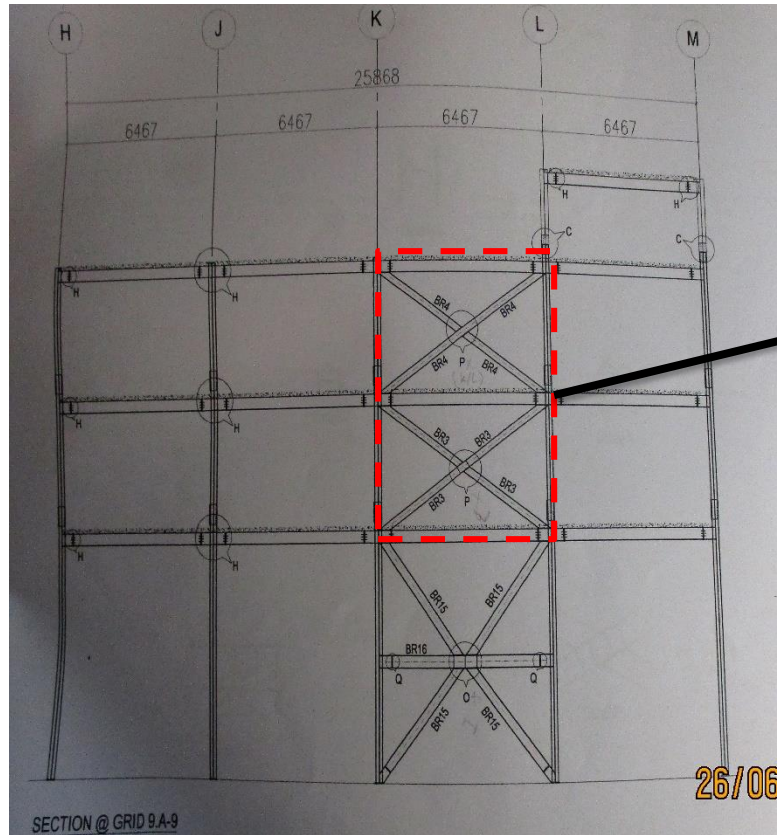
Provided Beam Layout

Beam layout provided in as-built structural drawing does not match with on site placement of beam on stair case. Three beams were found on site between grid shown on the provided beam layout which were not in drawing.



Three beams found on site

Observation: Factory Building



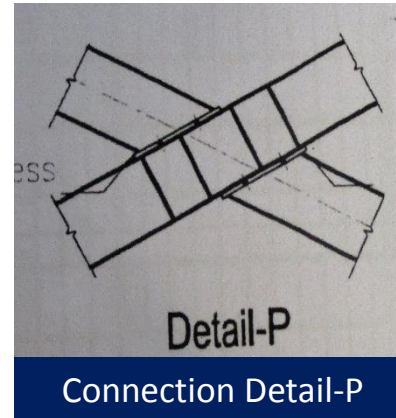
SECTION @ GRID 9A-9

Provided Bracing Layout at grid 9A-9

As per provided as-built drawings connection of bracing between grid K&L on 1st & 2nd floors was supposed to be represented by detail "P". But on site the connection found represents detail "K".



Connection found on 1st & 2nd floor

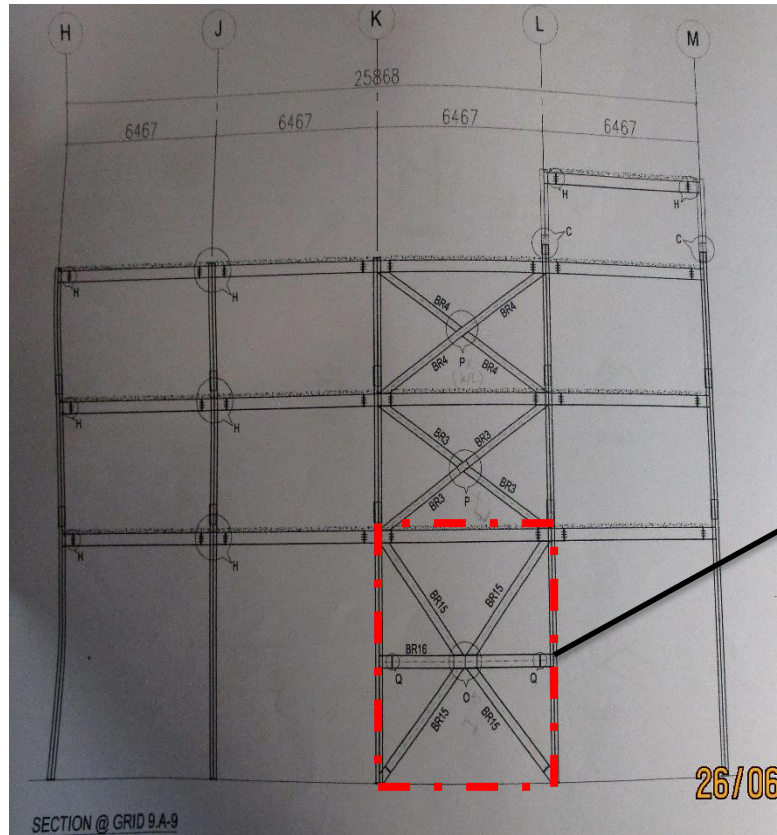


Connection Detail-P



Connection Detail-K

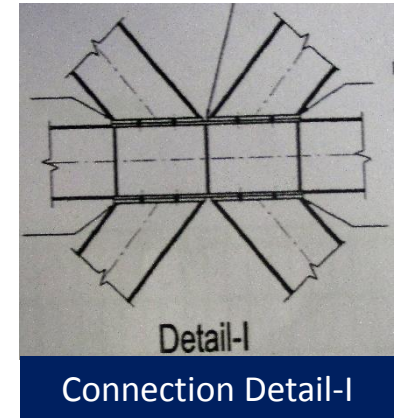
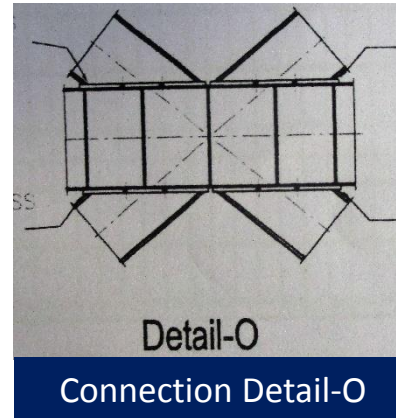
Observation: Factory Building



SECTION @ GRID 9A-9

Provided Bracing Layout at grid 9A-9

As per provided as-built drawings connection of bracing between grid K&L on ground floor was supposed to be represented by detail "O". But on site the connection found represents detail "I".



Observation: Factory Building



Corrosion observed at steel sections

Observation: Factory Building



Corrosion observed at the joint of column and bracing.



Corrosion was observed on steel column at roof top.

Corrosion was observed on steel columns on roof top and at the joint of column and bracing. Factory is required to identify the corroded locations and take proper remedial measures.

Observation: Factory Building



Lack of as-built documentation

9

Observation: Dyeing shed building



Factory could not provide any as-built drawings for the utility building. Factory Engineer is required to produce a full set of as-built drawings reflecting actual condition.



Problems Observed

Factory building :

Item 1: Discrepancy observed between As built drawing and on site condition

Item 2: Corrosion observed at steel sections

Utility Building:

Item 3: Lack of as-built documentations



Item No.	Observation	Recommended Action Plan	Recommended Timeline
1	(Factory Building) Discrepancy observed between As built drawing and on site condition	Factory engineer is required to produce accurate As-Built documentation reflecting the actual condition.	6-weeks
2	(Factory Building) Discrepancy observed between As built drawing and on site condition	Produce and actively manage a loading plan for all floor plates within the factory considering 3kPa or the floor capacity and column capacity.	6-weeks
3	(Factory Building) Discrepancy observed between As built drawing and on site condition	Continue to implement load plan.	6-months
4	(Factory building) Corrosion observed at steel sections	Factory Engineer to suggest and implement proper remedial measures to protect steel sections from corrosion.	6-weeks
5	(Utility Building) Lack of as-built documentations	Factory is required to produce As-Built drawings which reflect the actual condition.	6-weeks