

Arunima Apparels Ltd Rising Apparels Ltd.

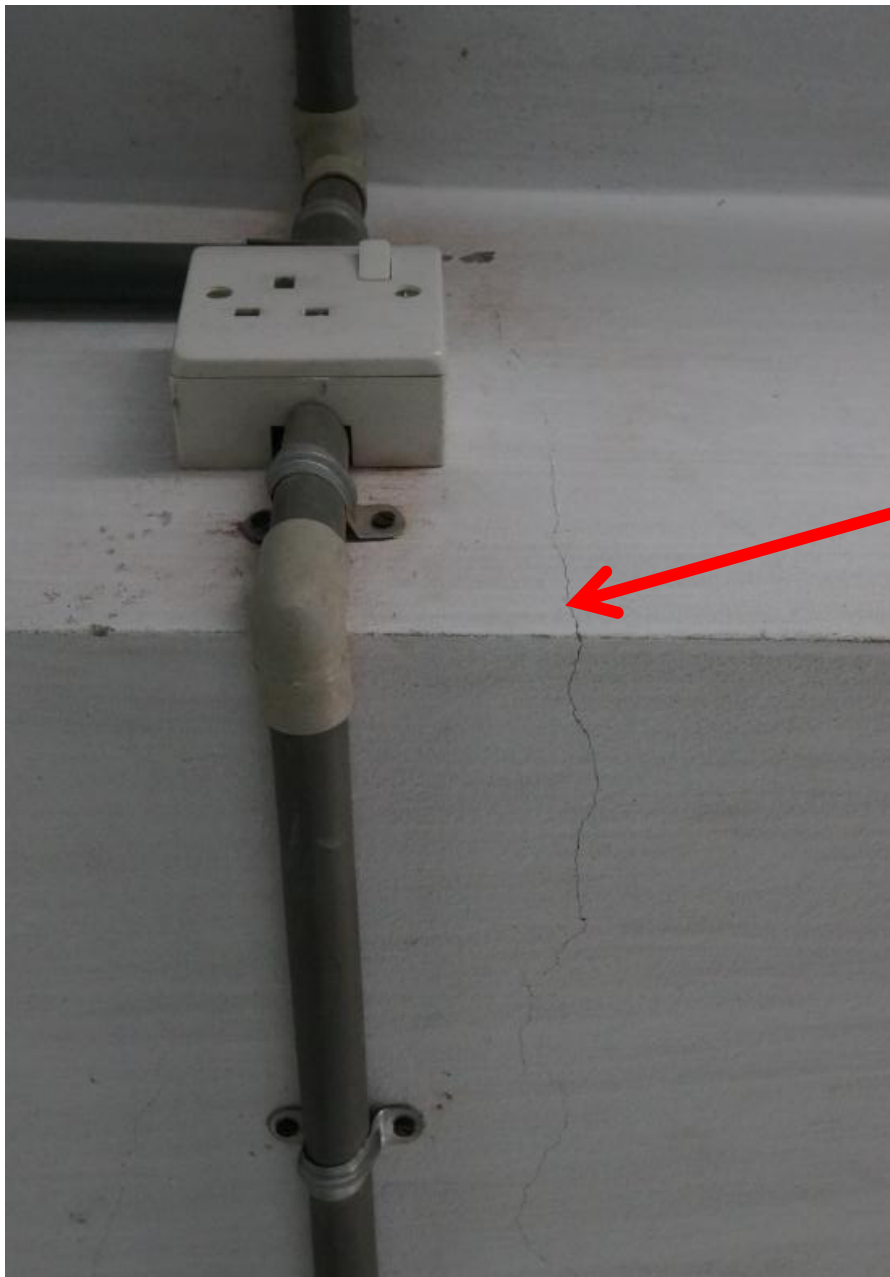
Plot 1/10, Block-K, Rpnagar, 1/A, Mirpur, Dhaka
(+23.8107N, 90.3588E)

24 September 2013



Observations

Monitoring of cracks in beams required



Various floor beams have flexural cracks. Those under the 6th and 7th floors are the largest.

All cracks appear less than 0.3mm, thus are not a problem at this time.

However current floor loading was low at the time of survey. Cracks may get larger if heavier loads are applied

Check on roof structure from localised high loading from water tanks required



Water tanks mounted on concrete plinths

Engineer to check that beam and slab have been designed to accommodate loads.

Priority Actions

Problems Observed

1. Verify concrete strengths in columns of main building with large grid
2. Monitor cracks in beams
3. Check on roof structure from localised high loading from water tanks required

Item No.	Observation	Recommended Action Plan	Recommended Timeline
1	Verify concrete strengths in columns of main building with large grid	Factory Engineer to review design, loads and columns stresses in area identified above.	6-weeks
2	Verify concrete strengths in columns of main building with large grid	Verify insitu concrete stresses either by cores or existing cylinder strength data for cores from 4 columns.	6-weeks
3	Verify concrete strengths in columns of main building with large grid	Produce and actively manage a loading plan for all floor plates within the factory giving consideration to floor capacity and column capacity.	6-months
4	Monitoring of cracks in beams is required	Conduct regular inspection of beam cracks. If cracks grow larger, unload the beam by removing all items on the floor directly above the beam, 5m either side of the beam and engage an engineer to investigate, repair and strengthen the beam	6-months
5	Water tanks located on the roof structure mounted on concrete plinths	Engage an engineer to verify that beam/slab has sufficient capacity to support fully filled water tanks plus concrete plinth	6-months