

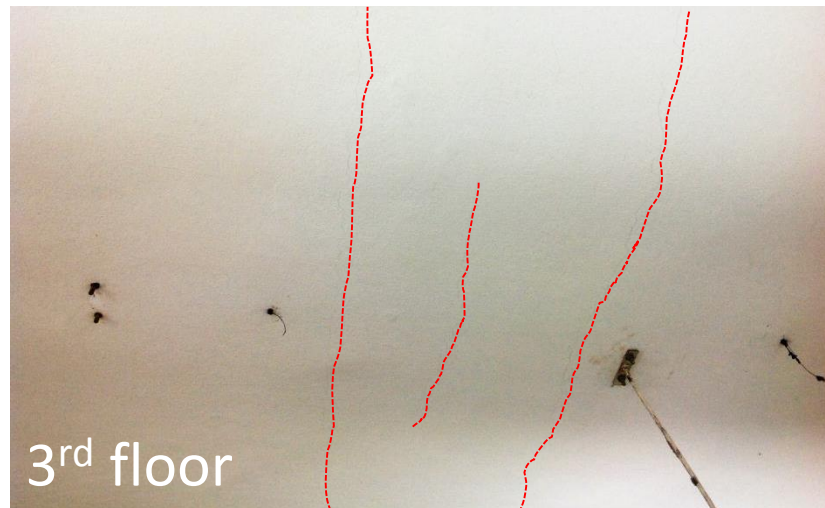
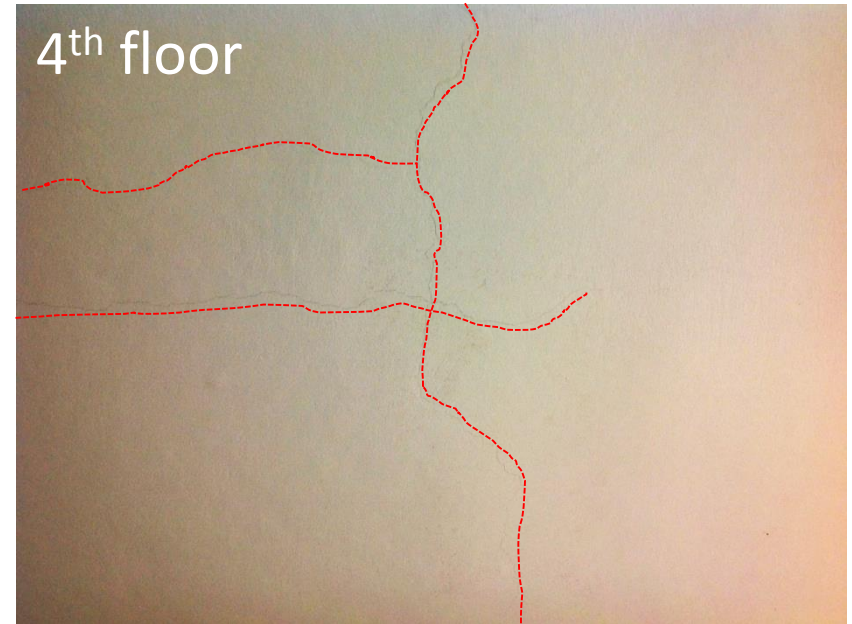
TM Fashion Ltd.

Jobeda Tower, Chandana, Chowrasta, Gazipur Sadar, Gazipur, Bangladesh
(23.986522N, 90.381394E)
18 December 2013



Observations

Cracking in slabs and beams



Cracks parallel to longest span detected in several floors. Cracks appeared concentrated at midspan area.

Building's Engineer to check cracks are only into the plaster and to ensure crack do not continue into concrete slab.

Cracking in slabs



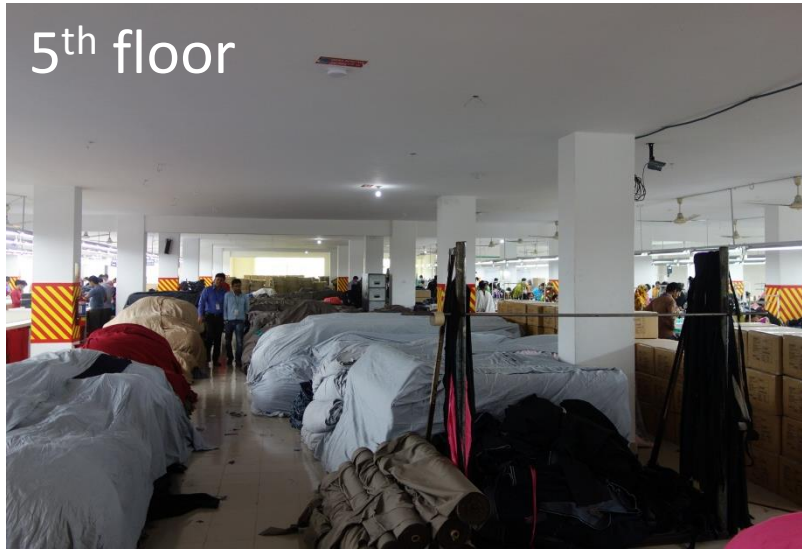
Some cracks on beams detected.

Many of the cracks appear to be shrinkage related - others not.

Building Engineer to ensure inclined cracks on beams are only in the plaster.

Cracking in beams at level 3

High loads on bonded/storage areas

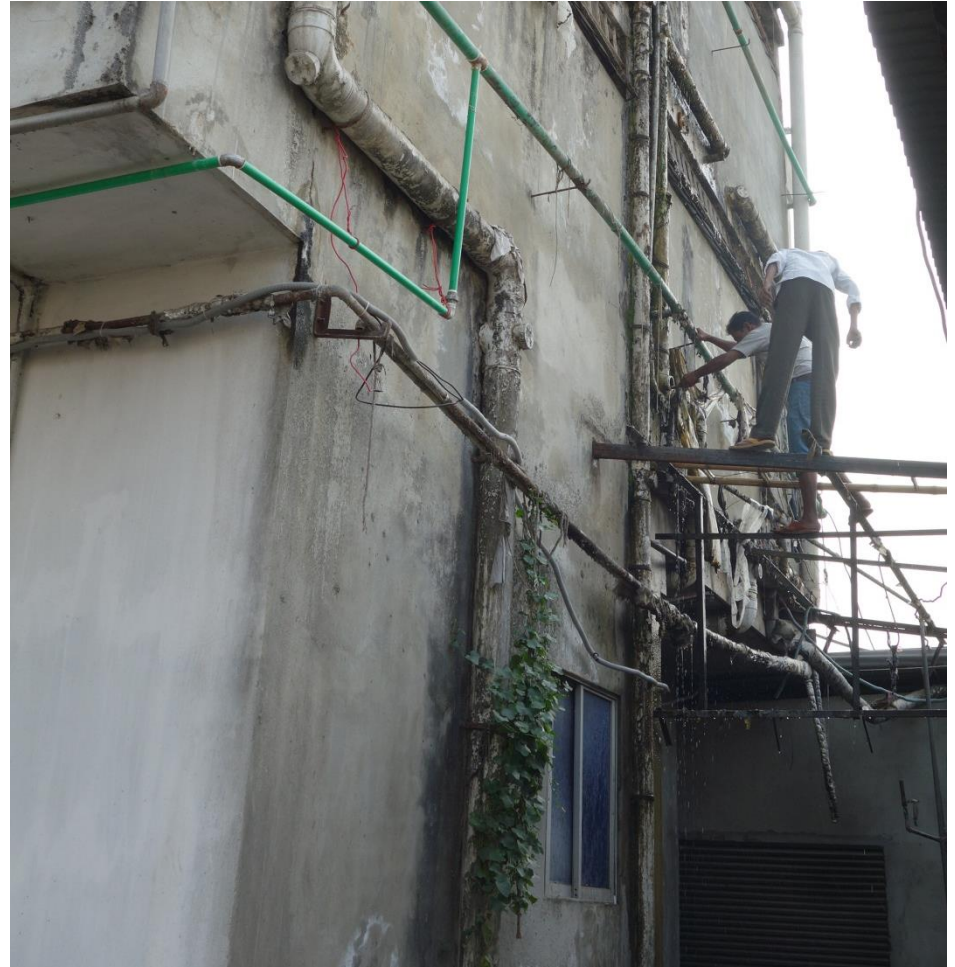


Building designed for Commercial use.
Live load assumed 3.0 kPa.

Limit stack height to 1.80 m (1.50x1.50 area) and keep 0.5-0.6 m cleared strip around.

Limit loose clothing storage to 1.80 m high

Water causing damage and corrosion



Leaking drainage pipes on façade.
Running water visible.

Water causing local damage

Priority Actions

Problems Observed

ITEM 1: Cracking in beams and slabs

ITEM 2: High loads on bonded/storage areas

ITEM 3: Leaking water causing damage and corrosion

Item No.	Observation	Recommended Action Plan	Recommended Timeline
1	Cracking in beams and slabs	Monitor cracks on slab. Conduct regular inspection of cracks. Investigate if cracks are only in the plastering.	6-months
2	Cracking in beams and slabs	If cracks grow larger, removing all items above the slab and close working areas below the affected areas . Engage an engineer to investigate, repair and strengthen the slab.	6-months
3	High loads on bonded/storage areas	Building's Engineer to ensure the structure is not loaded beyond capacity. We recommend limit stack height to 1.80m (1.50x1.50m area) and keep 0.5-0.60 m cleared strip around. Limit height to 1.80 m for loose clothing.	6-months
4	High loads on bonded/storage areas	Building Engineer to create controlled loading plans for all floors	6-months
5	Leaking water causing damage and corrosion	Manage drainage from above levels to downpipes to avoid structural corrosion due to continuous moisture.	6-months