

Rhine Dress Ltd. (11505)

Talla Road, Fatullah, Narayanganj.

(23.634344, 90.502316)

02.July.2014



Identified Priority 1 Concerns

(None)

Identified Priority 2 Concerns

- No floor load plan.
- Stability and capacity check of the roof shed truss sitting on brick wall.
- Inadequacies between the drawings of shed and the actual as-built conditions.

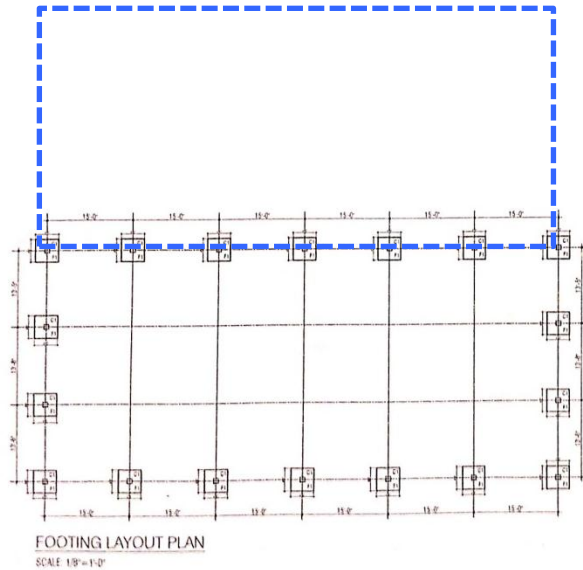


There are no floor load plans provided for each floor of each building.

A Detailed Engineering Assessment is required to review the design and loads.



Concerns on the stability system for roof shed truss sitting on brick wall. The roof must be checked for stability and capacity especially the connections between steel structural elements and brick wall. Stability under wind uplift needs to be checked in particular.



The structural details of this shed shown on structural drawings do not match the actual as-built conditions.

Identified Priority 3 Concerns

(None)

Overall Stability System



Concerns on the stability system for lateral loading. The lateral loading resistance for this 7 storeys high building is provided by moment frame action without any shear wall. Façade brickwork walls lack of moment capacity in the connections between columns and slabs.

We require that this building be investigated in a Detailed Engineering Assessment.



Water Ingress



Water ponding was found on the roof slab. And we were informed that there is no waterproofing material applied in this area.

Priority Actions

Problems Observed Summary

- ITEM 1: (Priority 2) No floor load plan.
- ITEM 2: (Priority 2) Stability and capacity check of the roof shed truss sitting on brick wall.
- ITEM 3: (Priority 2) Inadequacies between the drawings of shed and the actual as-built conditions.
- ITEM 4: (Priority 2) Overall stability system.
- ITEM 5: (Priority 3) No waterproofing material applied on roof slab.

Item No.	Observation	Recommended Action Plan	Recommended Timeline
1	Priority 2 - No floor load plan.	A Detailed Engineering Assessment is required to review the design and loads. Factory Engineer to state the maximum weight that is allowed per square meter. Suggest that state the value on notice boards in these areas. (Loading Plans).	6-weeks
2	Priority 2 - No floor load plan.	Maintain standards of quality control to ensure that storage procedures are correctly followed.	6-months
3	Priority 2 - Stability and capacity check of the roof shed truss sitting on brick wall.	Factory Engineer to review design, loads and related elements in area identified above to confirm capacity and stability for these items.	6-weeks
4	Priority 2 - Inadequacies between the drawings of shed and the actual as-built conditions.	Factory Engineer to survey the actual conditions and revise the drawings.	6-weeks
5	Priority 2 - Overall stability system.	Request that a Detailed Engineering Assessment of the overall building to be carried out and in particular, stability and foundation aspects should be investigated in detail.	6-weeks
6	Priority 3 - No waterproofing material applied on roof slab.	Waterproofing on the roof slab is to be applied. Moreover the roof slab drainage system should be investigated and improved.	6-months