

Sams Fashion (10011)

Sams Socks

Keowa Pashim Khanda (Koroitola), Mawna, Sreepur, Gazipur

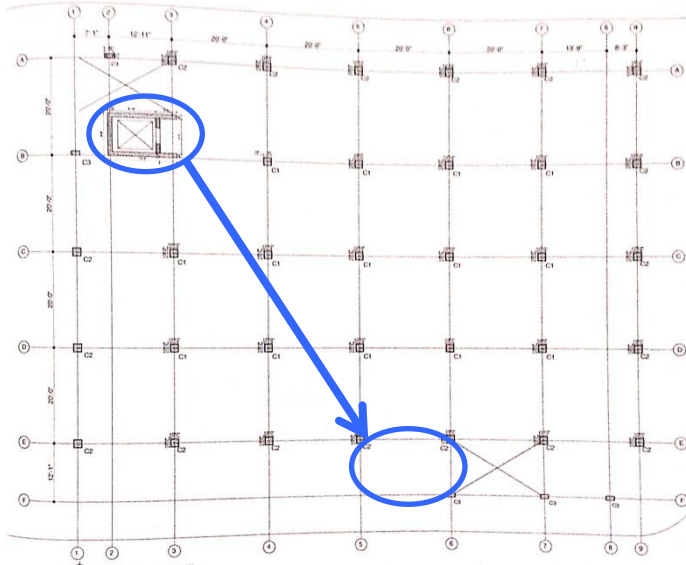
(+ 24.214199N, 90.413556E)

02.JUNE.2014

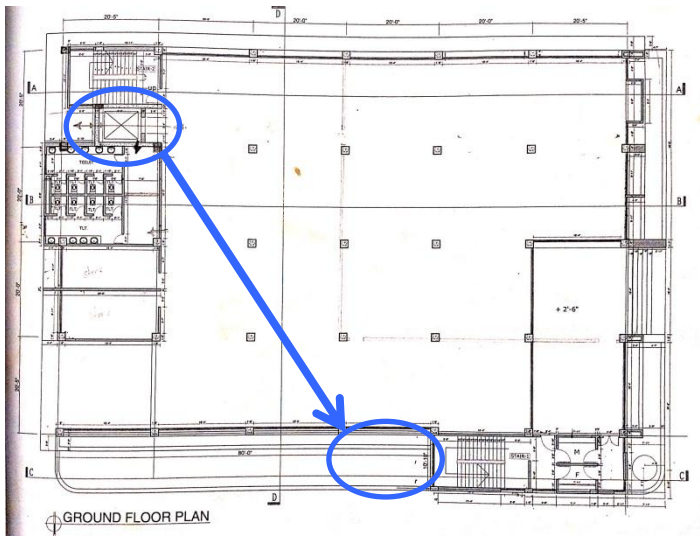


Identified Priority 2 Concerns

- Inconsistencies between the drawings and the actual as-built conditions of Building 1



We were informed that the shear wall will be constructed between grid line E-F/5-6 instead of grid line A'-B/2-3.



Identified Priority 3 Concerns

- Reinforcement left exposed at top level of Building 1



Reinforcement is left exposed at top level of Building 1.



Overall Stability System



Concerns on the stability system for lateral loading. Shear wall of Building 1 was planned to be relocated. Stability of Building 2 was provided by brick bearing walls and slab action which lack of moment capacity in the connections between walls and slabs.

We require that these items be investigated in an Engineering Assessment.



Water Ingress



There is no distress due to water ingress found at top level. However, there is water ponding found after the rain. Waterproofing material should be applied.



Priority Actions

Problems Observed Summary

- ITEM 1: (Priority 2) Inconsistencies between the drawings and the actual as-built conditions of Building 1.
- ITEM 2: (Priority 2) Overall stability system.
- ITEM 3: (Priority 3) Reinforcement left exposed at top level of Building 1.
- ITEM 4: (Priority 3) No waterproofing material applied at top level.

Item No.	Observation	Recommended Action Plan	Recommended Timeline
1	Priority 2 - Inconsistencies between the drawings and the actual as-built conditions of Building 1.	Factory Engineer to survey the actual conditions and revise the drawings. Factory Engineer to review design and lateral loads to confirm stability of this building under lateral loading.	6-weeks
2	Priority 2 - Inconsistencies between the drawings and the actual as-built conditions of Building 1.	Continue to implement load plan	6-months
3	Priority 2 - Overall stability system.	Request that an Engineering Assessment of the overall building to be carried out and in particular, stability and foundation aspects should be investigated in detail.	6-weeks
4	Priority 3 - Reinforcement left exposed at top level of Building 1.	Remove rust from rebar before further construction. For both durability and serviceability, rust proof paint or any appropriate methods is recommended.	6-months
5	Priority 3 - No waterproofing material applied at top level.	Factory Engineer to inspect water damaged structures and repair with a suitable method. Waterproofing on the roof slab is recommended. Moreover the slab drainage system should be investigated. Maintain standard of quality control.	6-months